

**National Kidney  
Foundation™**

30 East 33rd Street  
New York, NY 10016  
800.622.9010  
www.kidney.org/KLS

Non-Profit Org.  
U.S. Postage  
**PAID**  
Ballston Spa, NY  
Permit No. 58

— FREE —

New Online  
CME/CE Activity

*Cause or Casualty?  
The Impact and Role of the Kidney on Inflammation,  
Metabolic Syndrome, and Atherogenesis*

©2006 National Kidney Foundation, Inc. All rights reserved.

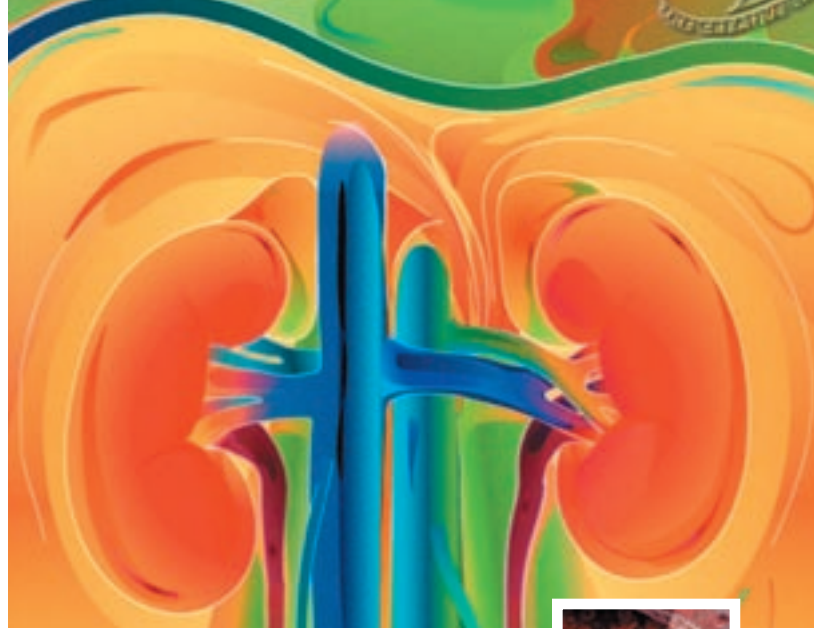
02-10-0223

Sponsored by



**National Kidney  
Foundation™**

A continuing education program in an on-demand Web-cast presentation



# CAUSE or CASUALTY?

The Impact and Role of the Kidney on Inflammation,  
Metabolic Syndrome, and Atherogenesis

Supported by an educational grant from **ORTHO BIOTECH**

— FREE —



ON-DEMAND

web-cast

## ACCREDITATION INFORMATION

**PHYSICIAN** The National Kidney Foundation is accredited by the Accreditation Council for Continuing Medical Education to provide continuing medical education for physicians. The National Kidney Foundation designates this educational activity for a maximum of 2.0 *AMA PRA Category 1 Credits™*. Physicians should only claim credit commensurate with the extent of their participation in the activity.

**NURSE** The National Kidney Foundation is an approved provider of continuing nursing education by the New York State Nurses Association, which is accredited as an approver of continuing nursing education by the American Nurses Credentialing Center's Commission on Accreditation. This educational activity is approved for 2.4 contact hours.

**NURSE PRACTITIONER** This program been approved for 2.2 contact hours of continuing education by the American Academy of Nurse Practitioners. Program ID 607233.

**DIETITIAN** This program has been approved by the Commission on Dietetic Registration for 2.0 Continuing Professional Education units.

**PHYSICIAN ASSISTANT** AAPA accepts Category I credit from AOACCME, Prescribed credit from AAFP, and *AMA PRA Category 1 Credit(s)™* for the PRA from organizations accredited by ACCME.

**PHARMACIST** The University of Missouri-Kansas City, School of Pharmacy, is approved by the Accreditation Council for Pharmacy Education (ACPE) as a provider of



continuing pharmaceutical education. The ACPE universal program number assigned to this educational offering is 034-999-06-049-H01.

This program is accredited by the University of Missouri-Kansas City for 0.2 CEUs (2.0 contact hours). All participants who successfully complete the program will be mailed the continuing education credit slip within three weeks.

**FAMILY PHYSICIAN** This activity has been reviewed and is acceptable for up to 2.0 Prescribed credits by the American Academy of Family Physicians. AAFP accreditation begins 8/1/2006. Term of approval is for two years from this date, with option for yearly renewal. The AAFP invites comments on any activity that has been approved for AAFP CME credit. Please forward your comments on the quality of this activity to [cmecomment@aafp.org](mailto:cmecomment@aafp.org).

**SOCIAL WORKERS** The National Kidney Foundation Council of Nephrology Social Workers, Provider #1014, is approved as a provider for social work continuing education by the Association of Social Work Boards (ASWB) [www.aswb.org](http://www.aswb.org), through the Approved Continuing Education (ACE) program. The National Kidney Foundation Council of Nephrology Social Workers maintains responsibility for the program. Social workers participating in this course will receive 2.0 continuing education clock hours. Licensed social workers should contact their individual jurisdiction to review current continuing education requirements for licensure renewal.

**DOCTOR OF OSTEOPATHY** This activity is applicable for category 2-B credit through the American Osteopathic Association for Doctors of Osteopathy.

## PROGRAM

This CME/CE activity is a free, on-demand Web-cast that can be accessed online at [www.kidney.org/KLS](http://www.kidney.org/KLS). Upon conclusion of the program, participants must complete a post-test and program evaluation to receive a certificate of completion. The estimated time for completion is 2.0 hours.

### TARGET AUDIENCE

This educational activity is designed for physicians, nurses, dietitians, nurse practitioners, pharmacists, social workers and physician assistants who care for patients with CKD.

### PROGRAM GOAL

The purpose of this activity is to educate professionals about the relationships between inflammation, the metabolic syndrome, atherogenesis and chronic kidney disease (CKD). It will include thought-provoking discussions about contemporary research that links these disease components and stimulates a scientific and clinical exchange that debates whether the kidney is a passive victim or a root cause of pathologic inflammation.

### LEARNING OBJECTIVES

At program conclusion, participants should:

- Identify current theories linking metabolic syndrome, inflammation, atherogenesis and CKD
- List traditional and nontraditional risk factors that promote atherosclerosis and renal injury
- Outline the potential clinical benefits and strategies for optimizing therapy to minimize oxidative stress in patients with CKD.

### FACULTY PRESENTATIONS

*Kidney Damage Causes Endothelial Dysfunction with Links to Adverse Cardiovascular Sequelae*  
Nosratola D. Vaziri, MD, MACP  
Orange, California

*Kidney Damage is a Casualty of Inflammation, Metabolic Syndrome, and Atherogenesis*  
Lilach O. Lerman, MD, PhD  
Rochester, Minnesota

*Clinical Implications and Treatment Strategies to Interrupt the Vicious Cycle*  
Stephen Seliger, MD, MS  
Baltimore, Maryland



### DECLARATION OF DISCLOSURE

It is the policy of the National Kidney Foundation to ensure balance, independence, objectivity, and scientific rigor in all CME/CE activities. Faculty participating in this activity are required to disclose to the audience any relationship they may have with the commercial supporters of this activity or with any other commercial organizations whose products or devices may be mentioned in their presentations.

### UNLABELED/INVESTIGATIONAL USE

During their presentations, faculty may discuss an unlabeled use or an investigational use not approved for a commercial product. Each faculty member is required to disclose this information to the audience when referring to an unlabeled or investigational use.

**DISCLAIMER** The faculty, National Kidney Foundation and Ortho Biotech Products, L.P., do not recommend the use of any pharmaceutical, diagnostic test, or device outside of the labeled indications as approved by the FDA. Please refer to the official prescribing information for each product for approved indications, contraindications, and warnings.



[www.kidney.org/KLS](http://www.kidney.org/KLS)