



National
Kidney
Foundation®

2016
SPRING
CLINICAL
MEETINGS

25 years of educating kidney care professionals

Preliminary Program





FEATURED KEYNOTE SPEAKER: **ATUL GAWANDE**

THURSDAY, APRIL 28
2:30pm–4:00pm

Advanced Kidney Disease: Individualized Care,
End-of-Life Transitions, and Patient Safety

- Professor, Harvard Medical School
- Renowned surgeon and researcher
- Author, *Being Mortal* and *The Checklist Manifesto*
- TIME Magazine's 100 most influential thinkers



TABLE OF CONTENTS

General Information	4
Educational Stipends	4
Poster Presentations/Exhibit Hall Activities	5
Award Recipients.....	6
Program Committee	7
Physician Program	8
Pharmacist Program.....	13
Advanced Practitioner Program.....	16
Nephrology Nurse and Technician Program.....	21
Renal and Clinical Dietitian Program.....	24
Nephrology Social Worker Program	27
Transplant Professional Program	31
Registration Information	34
Hotel Accommodations.....	35
Faculty	36

Pre-Conference Courses
Wednesday, April 27

General Sessions
Thursday, April 28 – Sunday, May 1

Advance Registration Deadline: **February 19, 2016**

To register, visit **www.nkfclinicalmeetings.org**

NEW FEATURES

- Half-Day Professional Development Seminar for Fellows and Residents
- Expanded educational stipend program for Residents and Dialysis Technicians
- New SCM16 Mobile App features – Polling and Q&A functionality directly through the app!
- Clinical Update in Hypertension – A full-day pre-conference course held in conjunction with the American Society of Hypertension
- Additional new pre-conference courses, including: Pragmatic Drug Dosing Across the Continuum in Kidney Disease; Vascular Access; and a Dialysis Certification Review Course



GENERAL INFORMATION

Meeting Site

The headquarters for the NKF 2016 Spring Clinical Meetings (SCM16) is the Hynes Convention Center in Boston, MA. Located in the heart of Boston's historic Back Bay neighborhood, the Hynes Convention Center is surrounded by world-class shopping, dining, attractions, public transportation and other amenities, giving you the ultimate in flexibility, and convenience. The Hynes is equipped with **Free Wi-Fi** access and complete cell phone coverage throughout the building, as well all-weather comfort, with **over 3,100 hotel rooms and more than 200 shops, restaurants**, and visitor amenities actually connected to the convention spaces.

Target Audience

SCM16 is designed for nephrologists in private practice and academia, general internists, pharmacists, physician assistants, nephrology nurses, and technicians, nurse practitioners, nephrology social workers, renal and clinical dietitians, and transplant coordinators.

Meeting Objectives

At the conclusion of this activity, participants will be able to:

- ◆ Identify recent changes in healthcare policy and advances in clinical and translational research, and discuss how these may impact the care of patients with kidney disease
- ◆ Integrate new discoveries in dialysis and non-dialysis chronic kidney disease, transplantation, hypertension, and other risk factors into clinical practice
- ◆ Enhance skills of the inter-professional team to encourage collaborative care, thereby improving outcomes of patients with kidney disease

Disclosure and Conflict of Interest Policy

It is the policy of the National Kidney Foundation (NKF) to ensure balance, independence, objectivity, and scientific rigor in all CME/CE activities. Any individual who has control over CME/CE content is required to disclose to learners any relevant financial relationship(s) they or their family members may have with commercial interests supporting this activity or whose products or devices are discussed in this activity. If, on the basis of information disclosed, a conflict exists, resolution will be achieved based on established policy by the NKF. Accredited status does not imply endorsement by the NKF or ANCC of any commercial products displayed in conjunction with this activity.

Faculty members are also required to disclose to the activity audience when an unlabeled use of a commercial product, or an investigational use not yet approved for any purpose, is discussed during an educational activity. The intent of this disclosure is to provide attendees with information prior to their participation in the educational activity, and allows the audience to be fully informed in the evaluation of the information being presented. The final program will note those individuals who have disclosed relationships, including the nature of the relationships and the associated commercial entities. This information will also be presented to the audience prior to the activity via podium announcement and slide presentation.

NKF's Expectation of Authors and Presenters

The National Kidney Foundation Spring Clinical Meetings promote excellence in kidney healthcare. NKF expects that all authors and presenters affiliated with the NKF 2016 Spring Clinical Meetings will provide informative and fully accurate content that reflects the highest level of scientific rigor and integrity.

Educational Stipends for Nurse Practitioners, Physician Assistants, Nurses, Technicians, Dietitians, and Social Workers

As part of their commitment to support continuing education, the **NKF Council of Advanced Practitioners (CAP), Council of Nephrology Nurses and Technicians (CNNT), Council on Renal Nutrition (CRN), and Council of Nephrology Social Workers (CNSW)** will accept applications from NKF members for educational stipends of up to \$500-\$1,000 (based on discipline) to assist in attending SCM16. Stipends will be awarded on a first-come, first-served basis. Persons presenting original research or abstracts may be given preference. The amount of the stipend will be based on travel distance. For an application and submission requirements, please visit: www.nkfclinicalmeetings.org. **Applications must be submitted by January 15, 2016.**

Educational Stipends for Residents

NKF invites Internal Medicine and Pediatric trainees to apply for sponsorship to attend SCM16. The intent of this sponsorship program is to encourage highly qualified and interested individuals to enter the field of nephrology. We hope to provide Internal Medicine and Pediatric trainees a concentrated exposure to the most current developments in clinical and experimental Nephrology in a stimulating learning environment;

by doing this, we may be able to shed light on the broader aspects of our subspecialty than what house staff experience on the wards in their day-to-day routine. *This program is intended for those individuals who may be interested in but are not already committed to a nephrology fellowship program.* Selected applicants will receive free registration to the Meetings as well as travel grants of up to \$1,500, depending upon travel distance. Individuals who are awarded travel grants will be notified by late-January. While we recognize that house staff often have difficulty getting coverage at their home institutions for their travel, acceptance of a travel grant means that the individual will be present from at least Thursday, April 28 through Saturday, April 30. For an application and submission requirements, please visit:

www.nkfclinicalmeetings.org.

Applications must be submitted by January 15, 2016.

Networking Luncheons

Kick off SCM16 with your colleagues at the Networking Luncheons! Join your colleagues to learn, meet and greet, as well as congratulate each other at these special events, which are hosted by the NKF Professional Councils: CAP, CNNT, CRN, and CNSW — all are welcome. The CRN and CNSW luncheons will be held on Thursday, April 28, from 12:00pm to 2:00pm. The CAP and CNNT luncheons will be held Friday, April 29, from 12:00pm to 2:00pm.

Sponsorship

Companies interested in supporting the NKF 2016 Spring Clinical Meetings should contact Stephanie Cogan, Vice President, Corporate Relations, at StephanieC@kidney.org or 212.889.2210 ext. 166.

Poster Presentations and Exhibit Hall Activities

The 2016 posters will be available for viewing in the Exhibit Hall beginning on **Thursday, April 28, at 6:00pm** through **Saturday, April 30, at 10:30am**.

Take advantage of this outstanding opportunity to earn 1.0 CME/CE credit/contact hour, share in the authors' research experiences, and discuss significant advances in the field of kidney disease.

POSTER PRESENTATIONS & EXHIBIT HALL ACTIVITIES*

Thursday, April 28	6:00pm – 7:30pm	Opening Ceremonies and Faculty Reception – Poster Authors Available for Q&A
Friday, April 29	7:00am – 8:00am	Continental Breakfast – Visit Posters/Exhibits
	12:00pm – 2:00pm	Lunch Served 12:15pm–1:15pm – Visit Posters/Exhibits
	5:30pm – 7:00pm	Networking Reception – Visit Posters/Exhibits
Saturday, April 30	7:30am – 10:30am	Continental Breakfast Served 7:30am–9:00am Visit Posters/Exhibits
	10:30am	Exhibit Hall Closes

* Hours subject to change.



2016 AWARD RECIPIENTS

Congratulations!



The Donald W. Seldin Award
Bruce Molitoris, MD
Indiana Center for Biological
Microscopy/
Indiana University School of Medicine
Indianapolis, IN



**The Shaul G. Massry
Distinguished Lecture**
Linda Fried, MD, MPH, FNKF
VA Pittsburgh Healthcare System
University of Pittsburgh
Pittsburgh, PA



**The David M. Hume
Memorial Award**
Sharon Anderson, MD
Oregon Health and Science
University
Portland, OR

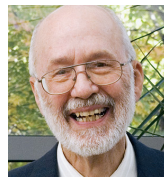


The Garabed Eknoyan Award
Holly Kramer, MD, MPH
Loyola University Medical Center
Maywood, IL

The J. Michael Lazarus Distinguished Award

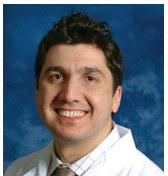


Ramesh Khanna, MD
University of Missouri School of
Medicine
Columbia, MO



Karl Nolph, MD
Awarded posthumously

Medical Advisory Board Distinguished Service Award



Khalid Nashar, MD
Allegheny Health Network
Pittsburgh, PA

INTERNATIONAL MEDAL RECIPIENTS



Joanne Bargman, MD, FRCPC
Toronto General Hospital
Toronto, ON, Canada



Giuseppe Remuzzi, MD, FRCP
Mario Negri Institute for Pharmacological
Research
Bergamo, Italy



Brendan Barrett, MB, MSc, FRCPC
Memorial University
St. John's, NL, Canada

Biographical information about the Award Winners and International Medal Recipients can be found at www.nkfclinicalmeetings.org

PROGRAM COMMITTEE

Daniel Weiner, MD, MS, FNKF

Program Chair
Tufts Medical Center
Boston, MA

Dena Rifkin, MD, MS, FNKF

Program Co-Chair
VA San Diego
La Jolla, CA

Sean Bagshaw, MD, MSc, FRCPC

University of Alberta
Edmonton, Canada

Laurence Beck, Jr., MD, PhD

Boston University School of
Medicine
Boston, MA

Debbie Cohen, MD

University of Pennsylvania
Philadelphia, PA

Kristine D'Angelo David, RD

Renal and Clinical Dietitian
Program Chair
Sigma-Tau Pharmaceuticals, Inc.
Gaithersburg, MD

Darlene Dobkowski, PA-C, RN

Advanced Practitioner Program
Co-Chair
Advanced Interventional
Radiology Services
Wayne, NJ

Elizabeth Evans, RN, MSN, DNP

Advanced Practitioner
Program Chair
Renal Medicine Associates
Albuquerque, NM

Bina George-Figueroa, MS, CHCP

Senior Director,
Program Accreditation
National Kidney Foundation
New York, NY

**Kimberly Gusse, MSW, LMSW,
ACSW**

Social Worker Program Co-Chair
Helen DeVos Children's Hospital
Grand Rapids, MI

Kathy Houle, NP

Nephrology Nurse and Technician
Program Co-Chair
Marquette General/Duke
Lifepoint Hospital
Marquette, MI

Jessica Joseph, MBA

Vice President, Scientific Activities
National Kidney Foundation
New York, NY

**Kamyar Kalantar-Zadeh, MD, MPH,
PhD, FNKF**

University of California Irvine,
School of Medicine
Orange, CA

Krista Lentine, MD, PhD

Saint Louis University
Saint Louis, MO

Danielle Nathan

Professional Education Director
National Kidney Foundation
New York, NY

**Amy Barton Pai, PharmD, BCPS,
FASN, FCCP**

Albany College of Pharmacy and
Health Sciences
Albany, NY

Jeffrey Perl, MD, SM, FRCP(C)

St. Michael's Hospital
University of Toronto
Toronto, ON, Canada

Amy Proctor, RN

Nephrology Nurse and Technician
Program Chair
Fresenius Medical Care
Houston, TX

Rudolph Rodriguez, MD, FACP

Puget Sound VA Medical Center
Seattle, WA

Jane Schell, MD

University of Pittsburgh
School of Medicine
Pittsburgh, PA

Beth Shanaman, RD

Renal and Clinical Dietitian
Program Co-Chair
Northwest Kidney Centers
Seattle, WA

Vernon Silva, LCSW, NSW-C

Social Worker Program Chair
U.S. Renal Care – Lomita
Lomita, CA

**Tushar Vachharajani, MD,
FASN, FACP**

W.G. (Bill) Hefner VA Medical Center
Salisbury, NC

Suzanne Watnick, MD

Oregon Health Sciences University
Portland, OR

Lawrence Weisberg, MD, FNKF

Cooper Health System
Camden, NJ

Ex Officio

Jeffrey Berns, MD, FNKF

NKF President
Hospital of the University
of Pennsylvania
Philadelphia, PA

Joseph Vassalotti, MD, FNKF

Chief Medical Officer
National Kidney Foundation
New York, NY



Physician Program

Accreditation Statement



The National Kidney Foundation is accredited by the Accreditation Council for Continuing Medical Education to provide continuing medical education for physicians.

Designation Statement

The National Kidney Foundation designates this live activity for a maximum of 24 AMA PRA Category 1 Credits™. Physicians should claim only the credit commensurate with the extent of their participation in the activity.

Note: Acquiring 24 credits requires continuous participation from Thursday morning through Sunday morning. Many participants opt for periodic breaks, which make their credits somewhat less. Additional credits are provided for courses requiring separate registration.*

*As of September 2015

Course Description: This course will deliver a comprehensive update on current dialysis management. The speakers are experts in varied aspects of dialysis care and will review current best practices, complications and common pitfalls in dialysis management. Attendees will benefit from case-based reviews and discussions ranging from the optimal timing of dialysis initiation, choosing the appropriate dialysis prescription, access management, complications of peritoneal dialysis and hemodialysis, dialysis management in hospitalized patients, continuous therapies, symptom management, and end-of-life planning.

Clinical Update in Hypertension

Held in conjunction with the American Society of Hypertension

Course Directors: Raymond Townsend, MD, FAHA, FCHBPR, and Debbie Cohen, MD
Wednesday, April 27, 7:30am – 5:00pm
Session 222, 8.5 credits

Target Audience: Designed for physicians, fellows, and advanced practitioners.

Course Description: Nephrology practitioners are frequently consulted to manage complicated hypertensive patients. This course is jointly sponsored by the American Society of Hypertension and the National Kidney Foundation, and is intended to provide updates on the clinical evaluation and management of hypertensive patients, emphasizing efficient use of existing measurement technologies, laboratory investigation, and imaging. In addition, current management of hypertension using available interventions will be showcased by expert faculty.

Pre-Conference Courses

Wednesday, April 27

REQUIRED: Separate registration fee of \$200 for NKF Members, \$225 for Non-Members, \$100 for Fellows and Residents; includes light breakfast, box lunch, and CME credits. Participation is limited, so register early.

Kidney Transplant: Principles and Practices

Course Director: Krista Lentine, MD, PhD
Wednesday, April 27, 7:30am – 5:30pm
Session 220, 7.5 credits

Target Audience: Designed for community nephrologists, transplant nephrologists, general and transplant nephrology fellows, transplant coordinators, and other professionals involved in the care of the kidney transplant patient.

Course Description: The latest advances and changes in transplant policies, tissue typing, transplant immunosuppression, short- and long-term care of kidney transplant recipients, and approaching potential donors are among the focuses of this course. Case discussions, an audience response system and round table discussion will be used to promote participant—faculty interaction.

Successful Dialysis: Who, What, Where, When, and How

Course Directors: Klemens Myers, MD, and Adam Segal, MD
Wednesday, April 27, 7:30am – 4:30pm
Session 221, 7.5 credits

Target Audience: Designed for nephrologists, nephrology fellows, advanced practitioners, and nephrology nurses.

Glomerular Diseases: Updates on Pathogenesis and Treatment

Course Directors: Gerald Appel, MD, and Fernando Fervenza, MD, PhD, FNKF
Wednesday, April 27, 8:00am – 6:00pm
Session 223, 8.5 credits

Target Audience: Designed for nephrologists, nephrology fellows, advanced practitioners, and nephrology nurses.

Course Description: In the last few years, a number of new diagnostic and therapeutic tools have emerged. Practicing nephrologists will greatly benefit by having an update regarding their utility in the diagnosis and management of patients with glomerular diseases. The course format includes lectures, question-and-answer sessions, case-based discussions, and panel sessions to review this evidence. Faculty are composed of outstanding teachers who are experts in their respective fields. The course should be of special interest to nephrologists who deal with patients with glomerular diseases or who are looking for an update on the subject.

Pragmatic Drug Dosing Across the Continuum in Kidney Disease

Course Directors: Katie Cardone, PharmD, BCACP, FNKF, and Thomas Nolin, PharmD, PhD

Wednesday, April 27, 7:30am – 4:30pm

Session 224, 7.5 credits

Target Audience: Designed for clinicians who are involved in the care and treatment of patients with chronic and acute kidney disease, and who wish to advance their knowledge in the area of pharmacokinetics in kidney disease.

Course Description: This course is designed to offer the attendee a contemporary and pragmatic framework to guide drug dosing along the continuum of kidney disease and renal replacement therapies. Discussion of approaches to estimate kidney function, newer body size descriptors,

and pharmacokinetic analysis techniques will be covered in an interactive format to promote direct application to patient care.

Critical Care in Nephrology

Course Director: Laurie Benton, PhD, MPAS, PA-C, RN, FNKF

Wednesday, April 27, 7:30am – 5:30pm

Session 620, 8.5 credits/contact hours

See page 16 for details

Vascular Access Workshop

Wednesday, April 27, 7:30am – 12:00pm

Course Director: Elizabeth Evans, RN, MSN, DNP

Session 621, 4.0 credits/contact hours

See page 16 for details

Lunch Workshops

REQUIRED: Separate registration fee of \$50; includes a box lunch and CME credits. Participation is limited to 75 each, so register early.

THURSDAY, APRIL 28, 12:00pm – 2:00pm

Treatment of BP in Special Populations, Session 230

Chairs: Debbie Cohen, MD, and Raymond Townsend, MD, FAHA, FCHBPR

Presenter(s): Vesna Garovic, MD, Raymond Townsend, MD, FAHA, FCHBPR, and Matthew Weir, MD

Workshop Description: This workshop will establish the most appropriate treatments and medication choices in the pregnant patient with hypertension, hypertension patients with multiple medication intolerances, and in renal transplant patients.

Fluid, Electrolyte, and Acid-Base: A Case-Based Workshop, Session 231

Chairs: Lawrence Weisberg, MD, FNKF, and Richard Sterns, MD

Presenter(s): Lawrence Weisberg, MD, FNKF, and Richard Sterns, MD

Workshop Description: This workshop will apply established and novel strategies to the analysis of readily available clinical information to diagnose patients who present with disorders of electrolyte and acid-base homeostasis. Attendees will learn how to evaluate and choose among novel and established treatments for the management of patients with disorders of electrolyte and acid-base homeostasis, and manage patients with these disorders in order to maximize the probability of successful clinical outcomes.

Complement and the Kidney, Session 232

Chairs: Fernando Fervenza, MD, PhD, FNKF, and Richard Smith, MD

Presenter(s): Richard Smith, MD, Fernando Fervenza, MD, PhD, FNKF, and Jean Francis, MD

Workshop Description: This lunch workshop will highlight the normal roles of the complement system in the kidney, and the ways in which its dysregulation can lead to disease. In the first part of the session, the participant will be introduced to the complement system and specific features of its regulation in the glomerulus and kidney. The next topic will focus on the clinical and pathological characteristics of C3 glomerulonephritis, a new and often difficult-to-recognize form of glomerular disease. The final topic will cover the evaluation of, and treatment options for, a patient whose kidney disease may be due to atypical hemolytic-uremic syndrome (aHUS), with a focus on the peri-transplantation period.

Troubleshooting Peritoneal Dialysis: Avoiding the Blame Game, Session 233

Chair: Ramesh Khanna, MD, and Jeffrey Perl, MD, SM, FRCPC

Presenter(s): Amy Evenson, MD, Beth Piraino, MD, FNKF, Joanne Bargman, MD, FRCPC, and Jeffrey Perl, MD, SM, FRCPC

Workshop Description: Using an interactive, case-based format, this workshop will highlight common clinical challenges in the management of patients on peritoneal dialysis, focusing on infectious and non-infectious complications including PD catheter malfunction, challenges in ultrafiltration, and will discuss



key considerations among special patient populations on PD, including patients with Polycystic Kidney Disease, the obese patient, and patients initiating PD after kidney transplant failure.

#nephrology, Session 234

Chair: Joel Topf, MD

Presenter(s): Joel Topf, MD, Matthew Sparks, MD, and Kenar Jhaveri, MD

Workshop Description: This interactive workshop will teach attendees how healthcare professionals and patients are using social media. Attendees will learn how to get started on Twitter, and will be able to avoid pitfalls of social media to ensure that it is used safely.

SATURDAY, APRIL 30, 11:30am – 1:00pm

Teach Each Other Well: Improving Communication Between Providers and Patients, Session 235

Chairs: Katharine Cheung, MD, and Vicki Jackson, MD, MPH

Presenter(s): Robert Cohen, MD, and Jane Schell, MD

Workshop Description: This workshop will discuss techniques to improve communication between providers and patients in the inpatient and outpatient settings, and identify concrete methods to discuss difficult topics of conversation directly related to ESRD. Methods to engage families and patients who must make difficult decisions regarding direction of care will also be covered.

Calciphylaxis, Session 236

Chair: Sagar Nigwekar, MD

Presenter(s): Sagar Nigwekar, MD, MMSc, Rajeev Malhotra, MD, Daniela Kroshinsky, MD, MPH, Rosalynn Nazarian, MD, Jeremy Gorman, MD, and Mihir Kamdar, MD

Workshop Description: This interactive workshop will review risk factors for calciphylaxis, explore strategies for diagnosis of calciphylaxis, and discuss calciphylaxis management using an interdisciplinary approach.

Kidney Stones, Session 237

Chair: Rudolph Rodriguez, MD, FACP

Presenter(s): Gary Curhan, MD, ScD, Mathew Sorensen, MD, MS, and David Goldfarb, MD, FACP, FASN

Workshop Description: This workshop will provide a practical and evidence-based review of current topics in kidney stones. Leading experts in the field will discuss clinically relevant topics in the medical and urologic management of kidney stones. The American Urological Association published guidelines on the medical management of kidney stones in 2014 which will be critically reviewed during the workshop. In addition, optimal co-management strategies between urologists and nephrologists will be discussed, along with an overview of the common urologic interventions, utilizing short video illustrations. Difficult cases and dilemmas regarding kidney stones will be reviewed, and ample time will be provided for discussion.

Case-Based Anemia Pharmacotherapy, Session 238

Chair: Amy Barton Pai, PharmD, BCPS, FASN, FCCP

Presenter(s): Katie Cardone, PharmD, BCACP, FNKF, Amy Barton Pai, PharmD, BCPS, FASN, FCCP, and Rebecca Maxson, PharmD, BCPS

Workshop Description: This workshop will utilize a case-based approach to addressing evidence-based management and controversies in anemia management in the CKD population. Topics include: management of ESA hyporesponse, judicious use of IV iron, and anemia management in hospital and outpatient settings.

Renal Pathology: A Case-Based Approach to Kidney Disease, Session 239

Chair: Lawrence Beck, Jr., MD, PhD

Presenter(s): Sus Waikar, MD, and Helmut Rennke, MD

Workshop Description: This workshop will be an interactive session in which participants will be led by experts work through cases from both the clinical and pathological standpoints. Challenging cases of glomerular, tubulointerstitial, and vascular diseases will allow participants to gain a basic approach to interpreting renal pathology, and to enable them to identify key lesions that can differentiate selected glomerular, tubular and vascular diseases with implications for treatment decisions.

Onco-Nephrology, Cancer, Chemotherapy, and the Kidney, Session 240

Chair: Kenar Jhaveri, MD

Presenter(s): Jonathan Hogan, MD, Jeffrey Berns, MD, FNKF, and Kenar Jhaveri, MD

Workshop Description: Onco-nephrology is the study of kidney disease in patients with cancer who are being treated with chemotherapy. Both the cancer and treatment of the cancer can have effects on the kidney. Experts will discuss novel, targeted therapies, and how they can cause tubular, interstitial, and glomerular damage. In addition, speakers shall also discuss the concept of monoclonal gammopathy of renal significance (MGRS) and when MGUS affects the kidney. This workshop will also discuss management of anemia in patients with CKD and ESRD who also are suffering from cancer.

Physician Program

Wednesday, April 27

TIME	SESSION #	SESSION	NOTES
7:30am – 5:30pm	220	Kidney Transplant: Principles and Practices	•
7:30am – 4:30pm	221	Successful Dialysis: Who, What, Where, When, and How	•
7:30am – 5:00pm	222	Clinical Update in Hypertension <i>Held in conjunction with the American Society of Hypertension</i>	•
8:00am – 6:00pm	223	Glomerular Diseases: Updates on Pathogenesis and Treatment	•
7:30am – 4:30pm	224	Pragmatic Drug Dosing Across the Continuum in Kidney Disease	•
7:30am – 5:30pm	620	Critical Care Nephrology	•✦
7:30am – 12:00pm	621	Vascular Access Workshop	•✦
6:00pm – 8:00pm	100	Career Choices in Nephrology – Fellows Reception <i>Held in conjunction with Women in Nephrology</i>	

Thursday, April 28

TIME	SESSION #	SESSION	NOTES
8:00am – 11:30am	225	Professional Development Seminar <i>Held in conjunction with Women in Nephrology</i>	•
8:00am – 9:30am	260	Kidney Transplantation: Optimizing Access and Outcomes in 2016	
8:00am – 9:30am	261	Is the Future Already Here? Integrated Care Models in Dialysis	
9:30am – 10:00am		Break	
10:00am – 11:30am	262	Unsafe at Any Speed? Patient Safety in the Hemodialysis Environment	✦
10:00am – 11:30am	263	Updates in PKD	
10:00am – 11:30am	264	Kidney Donation: What Every Nephrologist Needs to Know	
		Break	
12:00pm – 2:00pm	230	Lunch Workshop: Treatment of BP in Special Populations	•
12:00pm – 2:00pm	231	Lunch Workshop: Fluid, Electrolyte, and Acid-Base: A Case-Based Workshop	•
12:00pm – 2:00pm	232	Lunch Workshop: Complement and the Kidney	•
12:00pm – 2:00pm	233	Lunch Workshop: Troubleshooting Peritoneal Dialysis: Avoiding the Blame Game	•
12:00pm – 2:00pm	234	Lunch Workshop: #nephrology	•
2:00pm – 2:30pm		Break	
2:30pm – 4:00pm	265	Key Note Address by Atul Gawande, MD: Advanced Kidney Disease: Individualized Care, End-of-Life Transitions and Patient Safety/Shaul Massry Distinguished Lecture	
4:00pm – 4:15pm		Break	
4:15pm – 5:45pm	266	Update on KDOQI Guidelines and Controversies	
4:15pm – 5:45pm	267	Back with a Vengeance: The Risk of Recurrent GN in the Allograft	
4:15pm – 5:45pm	268	Applying Palliative Care Skills to Nephrology Care	
6:00pm – 7:30pm		Opening Ceremonies and Reception in the Exhibit Hall – Visit Posters/Exhibits	

Friday, April 29

TIME	SESSION #	SESSION	NOTES
7:00am – 8:00am		Continental Breakfast in the Exhibit Hall – Visit Posters/Exhibits	
8:30am – 10:00am	269	Emerging Topics in AV Access – Vascular and Cardiovascular Effects	
8:30am – 10:00am	270	Medication Safety in CKD: Room For Improvement	
10:00am – 10:30am		Break	
10:30am – 12:00pm	271	Resistant Hypertension	
10:30am – 12:00pm	272	Outpatient Dialysis for AKI: Help Needed!	

• Separate Registration and/or Fee Required. ✦ Joint with Councils.



Friday, April 29 (Continued)

TIME	SESSION #	SESSION	NOTES
12:00pm – 2:00pm		Break in the Exhibit Hall (Lunch Served 12:15pm – 1:15pm) – Visit Posters/Exhibits	
2:00pm – 3:30pm	273	Diabetic Kidney Disease: Maintaining Kidney Health	
2:00pm – 3:30pm	274	Shibboleths of Water	
2:00pm – 3:30pm	289	Advances and Innovations in Nephrology Education	
3:30pm – 4:00pm		Break	
4:00pm – 5:30pm	275	Improving Care in Acute Kidney Injury	
4:00pm – 5:30pm	276	Hot Topics in CKD: Genes, Geography, and Disadvantages	
5:30pm – 6:30pm	290	Resident's Tour of Posters	
5:30pm – 7:00pm		Networking Reception in the Exhibit Hall – Visit Posters/Exhibits	

Saturday, April 30

TIME	SESSION #	SESSION	NOTES
7:30am – 10:30am		Break in the Exhibit Hall (Breakfast Served 7:30am – 9:00am) – Visit Posters/Exhibits	
9:30am – 11:00am	277	Caring for the Older Patient with Kidney Disease	
9:30am – 11:00am	278	BP Measurements, Devices, and Timing of Medication	
9:30am – 11:00am	279	The United States Renal Data System (USRDS) – New Findings, Challenges, and Opportunities	
11:00am – 11:30am		Break	
11:30am – 1:00pm	235	Lunch Workshop: Teach Each Other Well: Improving Communication Between Providers and Patients	•
11:30am – 1:00pm	236	Lunch Workshop: Calciphylaxis	•
11:30am – 1:00pm	237	Lunch Workshop: Kidney Stones	•
11:30am – 1:00pm	238	Lunch Workshop: Case-Based Anemia Pharmacotherapy	•
11:30am – 1:00pm	239	Lunch Workshop: Renal Pathology: A Case-Based Approach to Kidney Disease	•
11:30am – 1:00pm	240	Lunch Workshop: Onco-Nephrology, Cancer, Chemotherapy, and the Kidney	•
1:00pm – 1:30pm		Break	
1:30pm – 3:00pm	280	A New Era for HCV and the Kidney	
1:30pm – 3:00pm	281	Current Measures of Dialysis Adequacy: Inadequate for Home Dialysis Patients?	
1:30pm – 3:00pm	287	The “Known Unknowns” Between AKI and CKD	
3:00pm – 3:30pm		Break	
3:30pm – 5:00pm	282	Update on Nutritional Management and Protein Energy Wasting in CKD	
3:30pm – 5:00pm	283	The Dialysis Outcomes and Practice Pattern Study (DOPPS) Program Continues to Grow	

Sunday, May 1

TIME	SESSION #	SESSION	NOTES
8:00am – 9:30am	284	Update on DKD Management	
8:00am – 9:30am	285	What's in the Bath?	
9:30am – 10:00am		Break	
10:00am – 11:30am	286	Filling in the Gaps in Dialysis Access Care	
10:00am – 11:00am	288	Potassium Homeostasis in Disease and Health	
11:30am		Meeting Adjourns	

• Separate Registration and/or Fee Required. † Joint with Councils.

Visit www.nkfclinicalmeetings.org for additional program details and up-to-date information on SCM16.

Pharmacist Program

Pharmacy continuing education contact hours will be sought for this program.

Pre-Conference Courses

REQUIRED: Separate registration fee of \$200 for NKF Members, \$225 for Non-Members; includes light breakfast, box lunch, and contact hours. Participation is limited, so register early.

Pragmatic Drug Dosing Across the Continuum in Kidney Disease

Course Directors: Katie Cardone, PharmD, BCACP, FNKF, and Thomas Nolin, PharmD, PhD

Wednesday, April 27, 7:30am – 4:30pm

Session 224, 7.5 contact hours (0.75 CEUs)

See page 9 for details

Critical Care in Nephrology

Course Director: Laurie Benton, PhD, MPAS, PA-C, RN, FNKF

Wednesday, April 27, 7:30am – 5:30pm

Session 620, 8.5 contact hours (0.85 CEUs)

See page 16 for details

Lunch Workshops

REQUIRED: Separate registration fee of \$50.00; includes a box lunch and contact hours. Participation is limited to 75, so register early.

THURSDAY, APRIL 28, 12:00pm – 2:00pm

Treatment of BP in Special Populations, Session 230

Chairs: Debbie Cohen, MD, and Raymond Townsend, MD, FAHA, FCHBPR

Presenter(s): Vesna Garovic, MD, Raymond Townsend, MD, FAHA, FCHBPR, and Matthew Weir, MD

Workshop Description: This workshop will establish the most appropriate treatments and medication choices in the pregnant patient with hypertension, hypertension patients with multiple medication intolerances, and in renal transplant patients.

Fluid, Electrolyte, and Acid-Base: A Case-Based Workshop, Session 231

Chairs: Lawrence Weisberg, MD, FNKF and Richard Sterns, MD

Presenter(s): Lawrence Weisberg, MD, FNKF, and Richard Sterns, MD

Workshop Description: This workshop will apply established and novel strategies to the analysis of readily available clinical information to diagnose patients who present with disorders of electrolyte and acid-base homeostasis. Attendees will learn how to evaluate and choose among novel and established treatments for the management of patients with disorders of electrolyte and acid-base homeostasis, and manage patients with these disorders in order to maximize the probability of successful clinical outcomes.

SATURDAY, APRIL 30, 11:30am – 1:00pm

Case-Based Anemia Pharmacotherapy, Session 238

Chair: Amy Barton Pai, PharmD, BCPS, FASN, FCCP

Presenter(s): Katie Cardone, PharmD, BCACP, FNKF, Amy Barton Pai, PharmD, BCPS, FASN, FCCP, and Rebecca Maxson, PharmD, BCPS

Workshop Description: This workshop will utilize a case-based approach to addressing evidence-based management and controversies in anemia management in the CKD population. Topics include: management of ESA hyporesponse, judicious use of IV iron, and anemia management in hospital and outpatient settings.

Onco-Nephrology, Cancer, Chemotherapy, and the Kidney, Session 240

Chair: Kenar Jhaveri, MD

Presenter(s): Jonathan Hogan, MD, Jeffrey Berns, MD, FNKF, and Kenar Jhaveri, MD

Workshop Description: Onconephrology is the study of kidney disease in patients with cancer who are being treated with chemotherapy. Both the cancer and treatment of the cancer can have effects on the kidney. Experts will discuss novel, targeted therapies and how they can cause tubular, interstitial, and glomerular damage. In addition, speakers shall also discuss the concept of monoclonal gammopathy of renal significance (MGRS) and when MGUS affects the kidney. This workshop will also discuss management of anemia in patients with CKD and ESRD who also are suffering from cancer.



Pharmacist Program

Wednesday, April 27

TIME	SESSION #	SESSION	NOTES
7:30am – 4:30pm	224	Pragmatic Drug Dosing Across the Continuum in Kidney Disease	•
7:30am – 5:30pm	620	Critical Care Nephrology	•

Thursday, April 28

TIME	SESSION #	SESSION	NOTES
8:00am – 9:30am	660	Bone, Mineral, and Protein Update	
8:00am – 9:30am	260	Kidney Transplantation: Optimizing Access and Outcomes in 2016	
9:30am – 10:00am		Break	
10:00am – 11:30am	562	Calciphylaxis and Vitamin K Supplementation	
10:00am – 11:30am	361	An Ounce of Prevention: Vaccination Management	
10:00am – 11:30am	461	Depression Screening Tools: Policy and Nephrology Social Work Interventions	
11:30am – 12:00pm		Break	
12:00pm – 2:00pm	230	Lunch Workshop: Treatment of BP in Special Populations	•
12:00pm – 2:00pm	231	Lunch Workshop: Fluid, Electrolyte, and Acid-Base: A Case-Based Workshop	•
2:00pm – 2:30pm		Break	
2:30pm – 4:00pm	265	Key Note Address by Atul Gawande, MD: Advanced Kidney Disease: Individualized Care, End-of-Life Transitions and Patient Safety/Shaul Massry Distinguished Lecture	
4:00pm – 4:15pm		Break	
4:15pm – 5:45pm	464	How I Teach My Patients About Depression	
6:00pm – 7:30pm		Opening Ceremonies and Reception in the Exhibit Hall – Visit Posters/Exhibits	

Friday, April 29

TIME	SESSION #	SESSION	NOTES
7:00am – 8:00am		Continental Breakfast in the Exhibit Hall – Visit Posters/Exhibits	
8:30am – 10:00am	270	Medication Safety in CKD: Room For Improvement	
10:00am – 10:30am		Break	
10:30am – 12:00pm	271	Resistant Hypertension	
10:30am – 12:00pm	666	Antibiotic Stewardship in Dialysis	
12:00pm – 2:00pm		Break in the Exhibit Hall (Lunch Served 12:15pm – 1:15pm) – Visit Posters/Exhibits	
2:00pm – 3:30pm	273	Diabetic Kidney Disease: Maintaining Kidney Health	
2:00pm – 3:30pm	368	Controversies in Anemia Management	
3:30pm – 4:00pm		Break	
4:00pm – 5:30pm	672	Complementary Medicine in Nephrology	
5:30pm – 7:00pm		Networking Reception in the Exhibit Hall – Visit Posters/Exhibits	

Saturday, April 30

TIME	SESSION #	SESSION	NOTES
7:30am – 10:30am		Break in the Exhibit Hall (Breakfast Served 7:30am – 9:00am) – Visit Posters/Exhibits	
9:30am – 11:00am	278	BP Measurements, Devices, and Timing of Medication	
11:00am – 11:30am		Break	
11:30am – 12:30pm	675	Diuretic Resistance	

• Separate Registration and/or Fee Required.

Saturday, April 30 (continued)

TIME	SESSION #	SESSION	NOTES
11:30am – 1:00pm	238	Lunch Workshop: Cased-Based Anemia Pharmacotherapy	•
11:30am – 1:00pm	240	Lunch Workshop: Onco-Nephrology, Cancer, Chemotherapy, and the Kidney	•
1:00pm – 1:30pm		Break	
1:30pm – 3:00pm	280	A New Era for HCV and the Kidney	
1:30pm – 3:00pm	478	Motivational Interviewing in Dialysis Adherence Study	
3:00pm – 3:30pm		Break	
3:30pm – 5:00pm	373	Bugs and Drugs: Prevention of Blood Stream Infections	

Sunday, May 1

TIME	SESSION #	SESSION	NOTES
8:00am – 9:30am	284	Update on DKD Management	

- Separate Registration and/or Fee Required.

Visit www.nkfclinicalmeetings.org for additional program details and up-to-date information on SCM16.



Advanced Practitioner Program

Planning Committee

Beth Evans, RN, MSN, DNP

Program Chair
Renal Medicine Associates
Albuquerque, NM

Darlene Dobkowski, PA-C, RN

Program Co-Chair
Advanced Interventional Radiology Services
Wayne, NJ

Laurie Benton, PhD, MPAS, PA-C, RN

Scott and White Medical Center
Temple, TX

Lynne Gafford, NP

Henry Ford Health System
Rochester Hills, MI

Joanne Hindlet, ANCP-BC, CNN-NP

Houston Nephrology Group
Houston, TX

Beverly Kimball, PA-C

Marshfield Clinic
Webb Lake, WI

Goal

To improve patient outcomes by enhancing advanced practitioners' knowledge base and skills that will have a direct impact on clinical practice in a variety of settings.

Continuing Education Information

This program will be submitted to the American Association of Nurse Practitioners.

AAPA accepts Category I credit from AOACCME, prescribed credit from AAFP, and AMA PRA Category I Credit(s)TM from organizations accredited by ACCME. Physician assistants may receive a maximum of 24 hours of Category I credit for completing this program.

Note: Acquiring 24 hours requires continuous participation from Thursday morning through Sunday morning. Many participants opt for periodic breaks, which make their credits/contact hours somewhat less. Additional credits/contact hours are provided for courses requiring separate registration.*

*As of September 2015

Pre-Conference Courses

REQUIRED: Separate registration fee (see below for pricing). Includes light breakfast and/or box lunch and CME/CE credits/contact hours. Participation is limited, so register early.

Pricing

Half-Day Courses: \$60 NKF Members, \$75 Non-Members

Full-Day Courses: \$200 NKF Members, \$225 Non-Members

Critical Care Nephrology

Course Director: Laurie Benton, PhD, MPAS, PA-C, RN, FNKF
Wednesday, April 27, 7:30am – 5:30pm
Session 620, 8.5 credits/contact hours

Target Audience: Designed for physicians, nephrology fellows, and advanced practitioners.

Course Description: This course is designed to offer the attendee an improved understanding of the unique role of the Nephrology Intensivist in the acute care hospital.

Vascular Access Workshop

Course Director: Elizabeth Evans, RN, MSN, DNP
Wednesday, April 27, 7:30am – 12:00pm
Session 621, 4.0 credits/contact hours

Target Audience: Designed for physicians, nephrology residents and fellows, medical students, advanced practitioners, nurses and technicians.

Course Description: This course is designed to offer the attendee a comprehensive understanding of planning for arteriovenous accesses and managing the AV access for early and ongoing interventions.

Chronic Kidney Disease

Course Directors: Darlene Dobkowski, PA-C, RN, and Joanne Hindlet, ANCP-BC, CNN-NP
Wednesday, April 27; 12:30pm – 6:00pm
Session 622; 4.75 credits/contact hours

Target Audience: This course is designed for the experienced advance practitioner wanting deeper knowledge of chronic kidney disease and management of CKD throughout the continuum.

Course Description: This course will offer the attendee the fundamental tools needed to practice in the CKD clinic, focusing on the usual primary and secondary causes of CKD, stage specific management, and case studies.

Kidney Transplant: Principles and Practices

Course Director: Krista Lentine, MD, PhD
Wednesday, April 27, 7:30am – 5:30pm
Session 220, 7.5 credits/contact hours
See page 8 for details.

Successful Dialysis: Who, What, Where, When, and How

Course Directors: Klemens Myers, MD, and Adam Segal, MD
Wednesday, April 27, 7:30am – 4:30pm
Session 221, 7.5 credits/contact hours
See page 8 for details.

Glomerular Diseases: Updates on Pathogenesis and Treatment

Course Directors: Gerald Appel, MD, and Fernando Fervenza, MD, PhD, FNKF
Wednesday, April 27, 8:00am – 6:00pm
Session 223, 8.5 credits/contact hours
See page 8 for details.

Pragmatic Drug Dosing Across the Continuum in Kidney Disease

Course Directors: Katie Cardone, PharmD, BCACP, FNKF, and Thomas Nolin, PharmD, PhD
Wednesday, April 27, 7:30am – 4:30pm
Session 224, 7.5 credits/contact hours
See page 9 for details

Lunch Workshops

REQUIRED: Separate registration fee of \$50; includes box lunch and CME/CE credits/contact hours. Participation is limited to 75, so register early.

THURSDAY, APRIL 28, 12:00pm – 2:00pm

Complement and the Kidney, Session 232

Chairs: Fernando Fervenza, MD, PhD, FNKF, and Richard Smith, MD
Presenter(s): Richard Smith, MD, Fernando Fervenza, MD, PhD, FNKF, and Jean Francis, MD

Workshop Description: This lunch workshop will highlight the normal roles of the complement system in the kidney, and the ways in which its dysregulation can lead to disease. In the first part of the session, the participant will be introduced to the complement system and specific features of its regulation in the glomerulus and kidney. The next topic will focus on the clinical and pathological characteristics of C3 glomerulonephritis, a new and often difficult-to-recognize form of glomerular disease. The final topic will cover the evaluation of, and treatment options for, a patient whose kidney disease may be due to atypical hemolytic-uremic syndrome (aHUS), with a focus on the peri-transplantation period.

Troubleshooting Peritoneal Dialysis: Avoiding the Blame Game, Session 233

Chair: Ramesh Khanna, MD, and Jeffrey Perl, MD
Presenter(s): Amy Evenson, MD, MPH, Beth Piraino, MD, FNKF, Joanne Bargman, MD, FRCPC, and Jeffrey Perl, MD, SM, FRCPC

Workshop Description: Using an interactive, case-based format, this workshop will highlight common clinical challenges in the management of patients on peritoneal dialysis, focusing on infectious and non-infectious complications including PD catheter malfunction, challenges in ultrafiltration, and will discuss

key considerations among special patient populations on PD, including patients with Polycystic Kidney Disease, the obese patient, and patients initiating PD after kidney transplant failure.

SATURDAY, APRIL 30, 11:30am – 1:00pm

Teach Each Other Well: Improving Communication Between Providers and Patients, Session 235

Chairs: Katharine Cheung, MD, and Vicki Jackson, MD, MPH
Presenter(s): Robert Cohen, MD, and Jane Schell, MD

Workshop Description: This workshop will discuss techniques to improve communication between providers and patients in the inpatient and outpatient settings, and identify concrete methods to discuss difficult topics of conversation directly related to ESRD. Methods to engage families and patients who must make difficult decisions regarding direction of care will also be covered.

Kidney Stones, Session 237

Chair: Rudolph Rodriguez, MD, FACP
Presenter(s): Gary Curhan, MD, SCD, Mathew Sorensen, MD, MS, and David Goldfarb, MD, FACP, FASN

Workshop Description: This workshop will provide a practical and evidence-based review of current topics in kidney stones. Leading experts in the field will discuss clinically relevant topics in the medical and urologic management of kidney stones. The American Urological Association published guidelines on the medical management of kidney stones in 2014 which will be critically reviewed during the workshop. In addition, optimal co-management strategies between urologists and nephrologists will be discussed, along with an overview of the common urologic interventions, utilizing short video illustrations. Difficult cases and dilemmas regarding kidney stones will be reviewed, and ample time will be provided for discussion.



Case-Based Anemia Pharmacotherapy, Session 238

Chair: Amy Barton Pai, PharmD, BCPS, FASN, FCCP

Presenter(s): Katie Cardone, PharmD, BCACP, FNKF, Amy Barton Pai, PharmD, BCPS, FASN, FCCP, and Rebecca Maxson, PharmD, BCPS

Workshop Description: This workshop will utilize a case-based approach to addressing evidence-based management and controversies in anemia management in the CKD population. Topics include: management of ESA hyporesponse, judicious use of IV iron, and anemia management in hospital and outpatient settings.

Onco-Nephrology, Cancer, Chemotherapy, and the Kidney, Session 240

Chair: Kenar Jhaveri, MD

Presenter(s): Jonathan Hogan, MD, Jeffrey Berns, MD, FNKF, and Kenar Jhaveri, MD

Workshop Description: Onco-nephrology is the study of kidney disease in patients with cancer who are being treated with chemotherapy. Both the cancer and treatment of the cancer can have effects on the kidney. Experts will discuss novel, targeted therapies, and how they can cause tubular, interstitial, and glomerular damage. In addition, speakers shall also discuss the concept of monoclonal gammopathy of renal significance (MGRS) and when MGUS affects the kidney. This workshop will also discuss management of anemia in patients with CKD and ESRD who also are suffering from cancer.

Advanced Practitioner Program

Wednesday, April 27

TIME	SESSION #	SESSION	NOTES
7:30am – 5:30pm	220	Kidney Transplant: Principles and Practices	♦♦
7:30am – 4:30pm	221	Successful Dialysis: Who, What, Where, When, and How	♦♦
8:00am – 6:00pm	223	Glomerular Diseases: Updates on Pathogenesis and Treatment	♦♦
7:30am – 4:30pm	224	Pragmatic Drug Dosing Across the Continuum in Kidney Disease	♦♦
7:30am – 5:30pm	620	Critical Care Nephrology	•
7:30am – 12:00pm	621	Vascular Access Workshop	•
12:30pm – 6:00pm	622	Chronic Kidney Disease	•
6:30pm – 7:30pm	101	Healthcare Professionals Welcome Reception	✦

Thursday, April 28

TIME	SESSION #	SESSION	NOTES
8:00am – 9:30am	660	Bone, Mineral, and Protein Update	
8:00am – 9:30am	661	Ethical Dilemmas	
8:00am – 9:30am	260	Kidney Transplantation: Optimizing Access and Outcomes in 2016	♦
9:30am – 10:00am		Break	
10:00am – 11:30am	662	Dialysis Update	
10:00am – 11:30am	562	Calciphylaxis and Vitamin K Supplementation	✦
10:00am – 11:30am	262	Unsafe at Any Speed? Patient Safety in the Hemodialysis Environment	♦
10:00am – 11:30am	263	Updates in PKD	♦
11:30am – 12:00pm		Break	
12:00pm – 2:00pm	232	Lunch Workshop: Complement and the Kidney	♦♦
12:00pm – 2:00pm	233	Lunch Workshop: Troubleshooting Peritoneal Dialysis: Avoiding the Blame Game	♦♦
2:00pm – 2:30pm		Break	
2:30pm – 4:00pm	265	Key Note Address by Atul Gawande, MD: Advanced Kidney Disease: Individualized Care, End-of-Life Transitions and Patient Safety/Shaul Massry Distinguished Lecture	♦
4:00pm – 4:15pm		Break	

• Separate Registration and/or Fee Required. ♦ Joint with Physicians. ✦ Joint with Councils.

Thursday, April 28 (continued)

TIME	SESSION #	SESSION	NOTES
4:15pm – 5:45pm	663	Money Matters	
4:15pm – 5:45pm	677	Pulmonary Hypertension Update	
4:15pm – 5:45pm	266	Update on KDOQI Guidelines and Controversies	◆
4:15pm – 5:45pm	268	Applying Palliative Care Skills to Nephrology Care	◆
6:00pm – 7:30pm		Opening Ceremonies and Reception in the Exhibit Hall – Visit Posters/Exhibits	

Friday, April 29

TIME	SESSION #	SESSION	NOTES
7:00am – 8:00am		Continental Breakfast in the Exhibit Hall – Visit Posters/Exhibits	
8:30am – 10:00am	664	Glomerulonephritis	
8:30am – 10:00am	665	Transplant Update: Care After the Transplant	
8:30am – 10:00am	269	Emerging Topics in AV Access – Vascular and Cardiovascular Effects	◆
8:30am – 10:00am	270	Medication Safety in CKD: Room For Improvement	◆
10:00am – 10:30am		Break	
10:30am – 12:00pm	666	Antibiotic Stewardship in Dialysis	
10:30am – 12:00pm	667	Renal Pathology: Case Studies	
10:30am – 12:00pm	568	What's New in Diabetes Management?	✦
12:00pm – 2:00pm		Break in the Exhibit Hall (Lunch Served 12:15pm – 1:15pm) — Visit Posters/Exhibits	
12:00pm – 2:00pm	668	Council of Advanced Practitioners Networking Luncheon — All are Welcome	
2:00pm – 3:30pm	669	What's New in Peritoneal Dialysis	
2:00pm – 3:30pm	670	Cardiorenal	
2:00pm – 3:30pm	571	Are You Prepared for an ESRD Core Survey QAPI Review?	
2:00pm – 3:30pm	273	Diabetic Kidney Disease: Maintaining Kidney Health	◆
3:30pm – 4:00pm		Break	
4:00pm – 5:30pm	671	Is This Really the Last Dialysis Access Option? How to Plan, How to Manage	
4:00pm – 5:30pm	672	Complementary Medicine in Nephrology	
4:00pm – 5:30pm	275	Improving Care in Acute Kidney Injury	◆
4:00pm – 5:30pm	276	Hot Topics in CKD: Genes, Geography, and Disadvantages	◆
5:30pm – 7:00pm		Networking Reception in the Exhibit Hall – Visit Posters/Exhibits	

Saturday, April 30

TIME	SESSION #	SESSION	NOTES
7:30am – 10:30am		Break in the Exhibit Hall (Breakfast Served 7:30am – 9:00am) – Visit Posters/Exhibits	
9:30am – 11:00am	673	Transplant Workup	
9:30am – 11:00am	674	Quality Renal Metrics – What Is Coming?	
9:30am – 11:00am	277	Caring for the Older Patient with Kidney Disease	◆
11:00am – 11:30am		Break	
11:30am – 12:30pm	675	Diuretic Resistance	
11:30am – 12:30pm	676	The Cardio-Renal Cross-Talk: A Focus On Arterial Stiffness	
11:30am – 1:00pm	235	Lunch Workshop: Teach Each Other Well: Improving Communication Between Providers and Patients	◆◆
11:30am – 1:00pm	237	Lunch Workshop: Kidney Stones	◆◆
11:30am – 1:00pm	238	Lunch Workshop: Cased-Based Anemia Pharmacotherapy	◆◆
11:30am – 1:00pm	240	Lunch Workshop: Onco-Nephrology, Cancer, Chemotherapy, and the Kidney	◆◆
1:00pm – 1:30pm		Break	

• Separate Registration and/or Fee Required. ◆ Joint with Physicians. ✦ Joint with Councils.



Saturday, April 30 (Continued)

TIME	SESSION #	SESSION	NOTES
1:30pm – 3:00pm	478	Motivational Interviewing in Dialysis Adherence Study	✦
1:30pm – 3:00pm	280	A New Era for HCV and the Kidney	◆
3:00pm – 3:30pm		Break	
3:30pm – 5:00pm	678	Diabetic Kidney Disease Update	
3:30pm – 5:00pm	679	Hyperkalemia and Metabolic Acidosis	
3:30pm – 5:00pm	282	Update on Nutritional Management and Protein Energy Wasting in CKD	◆

Sunday, May 1

TIME	SESSION #	SESSION	NOTES
8:00am – 9:30am	374	Transplantation From Start to Finish: Who Gets the Kidney?	✦
8:00am – 9:30am	284	Update on DKD Management	◆
9:30am – 10:00am		Break	
10:00am – 11:30am	581	Communication Aikido	✦
10:00am – 11:30am	286	Filling in the Gaps in Dialysis Access Care	◆
10:00am – 11:00am	288	Potassium Homeostasis in Disease and Health	◆
11:30am		Meeting Adjourns	

- Separate Registration and/or Fee Required. ◆ Joint with Physicians. ✦ Joint with Councils.

Visit www.nkfclinicalmeetings.org for additional program details and up-to-date information on SCM16.

Nephrology Nurse and Technician Program

Planning Committee

Amy Proctor, RN

Program Chair
Fresenius Medical Care
Houston, TX

Kathy Houle, NP

Program Co-Chair
Marquette General/Duke Lifepoint
Hospital
Marquette, MI

Carolyn Atkins, BS, RN, CCTC

Dallas, TX

Kevin Burns Sr., CHT, CHBT

Satellite Dialysis
Austin, TX

Teresa Close

Fresenius Medical Care North America
Willis, TX

Danilo B. Concepcion, CBNT, CCHT-A, FNKF

St. Joseph Hospital
Orange, CA

Kerri Holloway, BSN, RN, CNN

Fresenius Medical Care
Boston, MA

Cintia Perez, RN, MSN, CNN

St. Joseph Hospital
Orange, CA

Laura Willis, MSN, RN, CDN

Richard L. Roudebush VA Medical
Center
Indianapolis, IN

Goal

To improve patient outcomes by enhancing nephrology nurses' and technicians' knowledge base and skills that will have a direct impact on clinical practice in a variety of settings.

Continuing Education Information

The National Kidney Foundation is accredited as a provider of continuing nursing education by the American Nurses Credentialing Center's Commission on Accreditation.

Awarded 25 contact hours of continuing nursing education.

Note: Acquiring 25* contact hours requires continuous participation from Thursday morning through Sunday morning. Many participants opt for periodic breaks, which make their credit hours somewhat less. Additional credits are provided for courses requiring separate registration.



*As of September 2015

Pre-Conference Courses

REQUIRED: Separate registration fee (see below for pricing). Includes light breakfast and/or box lunch, and CE credits. Participation is limited, so register early.

Pricing

Half-Day Courses: \$60 NKF Members, \$75 Non-Members

Full-Day Courses: \$200 NKF Members, \$225 Non-Members

Dialysis Certification Review

Course Directors: Amy Proctor, RN, and Danilo B. Concepcion, CBNT, CCHT-A, FNKF
Wednesday, April 27; 7:30am – 4:30pm
Session 320; 7.75 contact hours

Target Audience: Designed for nurses who are preparing for the CDN test; and also an excellent overview of dialysis for patient care technicians, and LPN/LVN's.

Course Description: This course is designed to offer the attendee an overview of dialysis and CDN certification to include concepts of kidney disease with an overview of hemodialysis (the dialysis machine, vascular access, complications/interventions, and water treatment). There will also be an overview of both peritoneal dialysis and transplantation. The benefits of certification, its requirements and application, will also be discussed. There will be an interactive portion with sample questions.

Kidney Transplant: Principles and Practices

Course Director: Krista Lentine, MD, PhD
Wednesday, April 27, 7:30am – 5:30pm
Session 220, 7.5 credits/contact hours
See page 8 for details.

Successful Dialysis: Who, What, Where, When and How

Course Directors: Klemens Myers, MD and Adam Segal, MD
Wednesday, April 27, 7:30am – 4:30pm
Session 221, 7.5 credits/contact hours
See page 8 for details.

Vascular Access Workshop

Course Director: Elizabeth Evans, RN, MSN, DNP
Wednesday, April 27, 7:30am – 12:00pm
Session 621, 4.0 credits/contact hours
See page 16 for details

Chronic Kidney Disease

Course Directors: Darlene Dobkowski, PA-C, RN, and Joanne Hindlet, ANCP-BC, CNN-NP
Wednesday, April 27, 12:30pm – 6:00pm
Session 622, 4.75 credits/contact hours
See page 16 for details



Nephrology Nurse and Technician Program

Wednesday, April 27

TIME	SESSION #	SESSION	NOTES
7:30am - 4:30pm	320	Dialysis Certification Review	•
7:30am - 5:30pm	220	Kidney Transplant: Principles and Practices	♦♦
7:30am - 4:30pm	221	Successful Dialysis: Who, What, Where, When, and How	♦♦
7:30am - 12:00pm	621	Vascular Access Workshop	•✦
12:30pm - 6:00pm	622	Chronic Kidney Disease	•✦
1:00pm - 5:00pm	422	Building Skills to Manage the Most Difficult Patient Situations as a Team	•
6:30pm - 7:30pm	101	Healthcare Professionals Welcome Reception	✦

Thursday, April 28

TIME	SESSION #	SESSION	NOTES
8:00am - 9:30am	360	Nursing Research	
8:00am - 9:30am	660	Bone, Mineral, and Protein Update	✦
8:00am - 9:30am	260	Kidney Transplantation: Optimizing Access & Outcomes in 2016	♦
8:00am - 9:30am	261	Is the Future Already Here? Integrated Care Models in Dialysis	♦
9:30am - 10:00am		Break	
10:00am - 11:30am	361	An Ounce of Prevention: Vaccination Management	
10:00am - 11:30am	662	Dialysis Update	✦
10:00am - 11:30am	262	Unsafe at Any Speed? Patient Safety in the Hemodialysis Environment	♦
10:00am - 11:30am	264	Kidney Donation: What Every Nephrologist Needs to Know	
11:30am - 12:00pm		Break	
12:00pm - 2:00pm	232	Lunch Workshop: Complement and the Kidney	•
12:00pm - 2:00pm	233	Lunch Workshop: Troubleshooting Peritoneal Dialysis: Avoiding the Blame Game	•
12:00pm - 2:00pm	234	Lunch Workshop: #nephrology	•
2:30pm - 4:00pm	265	Key Note Address by Atul Gawande, MD: Advanced Kidney Disease: Individualized Care, End-of-Life Transitions and Patient Safety/Shaul Massry Distinguished Lecture	♦
4:00pm - 4:15pm		Break	
4:15pm - 5:45pm	362	Management of Medical Systems: Applying Six Sigma to the Healthcare Environment	
4:15pm - 5:45pm	266	Update on KDOQI Guidelines and Controversies	♦
4:15pm - 5:45pm	268	Applying Palliative Care Skills to Nephrology Care	♦
6:00pm - 7:30pm		Opening Ceremonies and Reception in the Exhibit Hall - Visit Posters/Exhibits	

Friday, April 29

TIME	SESSION #	SESSION	NOTES
7:00am - 8:00am		Continental Breakfast in the Exhibit Hall - Visit Posters/Exhibits	
8:30am - 10:00am	363	Quality Assessment and Performance Improvement (QAI) Program	
8:30am - 10:00am	364	Water Treatment: Functions and Components	
8:30am - 10:00am	269	Emerging Topics in AV Access - Vascular and Cardiovascular Effects	
8:30am - 10:00am	270	Medication Safety in CKD: Room For Improvement	
10:00am - 10:30am		Break	
10:30am - 12:00pm	365	When Disaster Strikes	
10:30am - 12:00pm	579	Symptom Targeted Intervention	✦
10:30am - 12:00pm	272	Outpatient Dialysis for AKI: Help Needed!	♦
12:00pm - 2:00pm		Break in the Exhibit Hall (Lunch Served 12:15pm - 1:15pm) - Visit Posters/Exhibits	

• Separate Registration and/or Fee Required. ♦ Joint with Physicians. ✦ Joint with Councils.

Friday, April 29 (continued)

TIME	SESSION #	SESSION	NOTES
12:00pm – 2:00pm	366	Council of Nephrology Nurses and Technicians Networking Luncheon/ Communication Through Humor — All are Welcome!	
2:00pm – 3:30pm	367	Vascular Access	
2:00pm – 3:30pm	368	Controversies in Anemia Management	
2:00pm – 3:30pm	669	What's New in Peritoneal Dialysis	✦
2:00pm – 3:30pm	470	Transition of Care in ESRD: Teens to Adults	✦
2:00pm – 3:30pm	571	Are You Prepared for an ESRD Core Survey QAPI Review?	✦
3:30pm – 4:00pm		Break	
4:00pm – 5:30pm	369	A Patient's Perspective: A Journey From Dialysis to Transplant to Patient Advocate	
4:00pm – 5:30pm	370	Dialysis Chemistries	
4:00pm – 5:30pm	471	Caught in the Middle: When Contradictory Expectations of Patients, Staff, and Corporations Clash	✦
4:00pm – 5:30pm	672	Complementary Medicine in Nephrology	✦
4:00pm – 5:30pm	276	Hot Topics in CKD: Genes, Geography, and Disadvantages	◆
5:30pm – 7:00pm		Networking Reception in the Exhibit Hall – Visit Posters/Exhibits	

Saturday, April 30

TIME	SESSION #	SESSION	NOTES
7:30am – 10:30am		Break in the Exhibit Hall (Breakfast Served 7:30am – 9:00am) – Visit Posters/Exhibits	
9:30am – 11:00am	573	Fluids: What's It All About? UF Rate, Cardiac Events, and Management of Interdialytic Weight Gain	✦
9:30am – 11:00am	277	Caring for the Older Patient with Kidney Disease	◆
9:30am – 11:00am	279	The United States Renal Data System (USRDS) – New Findings, Challenges, and Opportunities	◆
11:00am – 11:30am		Break	
11:30am – 12:30pm	371	Treatment Options Education	
11:30am – 12:30pm	372	Overview of Government Initiatives	
11:30am – 1:00pm	238	Lunch Workshop: Case-Based Anemia Pharmacotherapy	•
1:00pm – 1:30pm		Break	
1:30pm – 3:00pm	478	Motivational Interviewing in Dialysis Adherence Study	✦
1:30pm – 3:00pm	577	Changing Trends in Renal Economics and Measuring Quality: The Impact on Caregivers	✦
1:30pm – 3:00pm	280	A New Era for HCV and the Kidney	◆
1:30pm – 3:00pm	281	Current Measures of Dialysis Adequacy: Inadequate for Home Dialysis Patients?	◆
3:00pm – 3:30pm		Break	
3:30pm – 5:00pm	373	Bugs and Drugs: Prevention of Blood Stream Infections	
3:30pm – 5:00pm	283	The Dialysis Outcomes and Practice Pattern Study (DOPPS) Program Continues to Grow	

Sunday, May 1

TIME	SESSION #	SESSION	NOTES
8:00am – 9:30am	374	Transplantation From Start to Finish: Who Gets the Kidney?	
9:30am – 10:00am		Break	
10:00am – 11:30am	581	Communication Aikido	✦
10:00am – 11:30am	286	Filling in the Gaps in Dialysis Access Care	◆
11:30am		Meeting Adjourns	

• Separate Registration and/or Fee Required. ◆ Joint with Physicians. ✦ Joint with Councils.

Visit www.nkfclinicalmeetings.org for additional program details and up-to-date information on SCM16.



Renal and Clinical Dietitian Program

Planning Committee

Kristine D'Angelo David, RD

Program Chair
Sigma-Tau Pharmaceuticals, Inc.
Gaithersburg, MD

Beth Shanaman, RD

Program Co-Chair
Northwest Kidney Centers
Seattle, WA

Nadiya Lakhani, RDN, CSR, LD

Dallas Nephrology Associates
Dallas, TX

Meredith Marinaro, MS, RD

Dialysis Clinic, INC
Farmington, CT

Beth Morlang, RD, LD

Bright Dialysis
Ft. Pierce, FL

Erika Spann, RD

U.S. Renal Care Dialysis
Inglewood, CA

Mary Sundell, MLAS, RD, LDN, CCRP

Vanderbilt Dialysis Clinic
Nashville, TN

Angela Weinstock RD, LD

Da Vita Green Valley Dialysis
Henderson, NV

Continuing Education Information



The National Kidney Foundation is a Continuing Professional Education (CPE) Accredited Provider with the Commission on Dietetic Registration (CDR). CDR Credentialed Practitioners will receive 22 Continuing Professional Education Units (CPEUs) for completion of this activity/material.

Note: Acquiring 22 CPEUs requires continuous participation from Thursday morning through Sunday morning. Many participants opt for periodic breaks, which make their CPEUs somewhat less. Additional CPEUs are provided for courses requiring separate registration.*

*As of September 2015

Pre-Conference Courses

REQUIRED: Separate registration fee of \$150 for NKF Members, \$175 for Non-Members; includes light breakfast, boxed lunch, and CPEUs. Participation is limited, so register early.

Foundations of Nutrition Practice for Kidney Disease (Strategies I)

Course Director: Janelle Gonyea, RDN, LD, FNKF
Wednesday, April 27, 7:30am – 5:00pm
Session 520, 7.75 CPEUs

Target Audience: Strategies I is designed for registered dietitians who wish to strengthen their overall knowledge of the complex nutritional requirements of people with chronic kidney disease (CKD), Stage 5 in particular.

Course Description: Strategies I will focus on learning the basics of renal nutrition. Topics by nationally-recognized leaders will include: a review of renal physiology and changes that occur as CKD progresses, management of mineral bone disease, malnutrition, Medical Nutrition Therapy for in-center hemodialysis, home hemodialysis and peritoneal dialysis patients, urea kinetic modeling and guidelines regarding vitamin requirements. This all-day workshop will conclude with a number of case studies to help practically apply solutions to common issues facing kidney disease professionals.

Advanced Practice in Renal Nutrition: Update 2016 (Strategies II)

Course Director: Kathy Schiro Harvey, MS, RD, CSR
Wednesday, April 27, 7:30am – 5:00pm
Session 521, 8.5 CPEUs

Target Audience: Designed for advanced practice renal dietitians.

Course Description: This course is designed to teach the advanced practice renal dietitian how to: identify complex clinical and management issues, foster critical thinking to identify best practice strategies, and utilize interactive learning, including case studies that will result in changes in practice, to improve nephrology care.

Violence in the Dialysis and Transplant Settings: Prevention, Immediate Intervention, and Post-Incident Management

Course Directors: Jane Kwatcher, MSW, LCSW, and Mathias Stricherz, EdD
Wednesday, April 27, 1:00pm – 5:00pm
Session 423, 4.0 CPEUs
See page 28 for details.

Workshops

FRIDAY, APRIL 29, 4:00pm – 5:30pm

Nutritional Poster Tour, Session 530

Presenters: Mary B. Sundell, MLAS, RD, LDN, CCRP, Aimee Jaremowicz, RD, LDN, and Gerald VanBolt, BA

Workshop Description: Do you love the poster sessions, but you're not sure what to look for in research and outcomes? Tour the posters in this research session with a colleague who has a background in both renal nutrition and research to better understand what is new, what is accurate, and what needs further study.

Separate complimentary registration required. Participation is limited, so register early.

Renal and Clinical Dietitian Program

Wednesday, April 27

TIME	SESSION #	SESSION	NOTES
7:30am – 5:00pm	520	Foundations of Nutrition Practice for Kidney Disease (Strategies I)	•
7:30am – 5:00pm	521	Advanced Practice in Renal Nutrition: Update 2016 (Strategies II)	•
1:00pm – 5:00pm	423	Violence in Dialysis and Transplant Settings: Prevention, Immediate Intervention, and Post-Incident Management	✦
6:30pm – 7:30pm	101	Healthcare Professionals Welcome Reception	✦

Thursday, April 28

TIME	SESSION #	SESSION	NOTES
8:00am – 9:30am	560	Western Diets: Are We Killing Our Patients?	
8:00am – 9:30am	561	Is Routine Use of Renal MVI Necessary?	
8:00am – 9:30am	661	Ethical Dilemmas	✦
9:30am – 10:00am		Break	
10:00am – 11:30am	562	Calciphylaxis and Vitamin K Supplementation	
10:00am – 11:30am	563	Herbal Supplementation in Kidney Disease	
11:30am – 12:00pm		Break	
12:00pm – 2:00pm	564	Council on Renal Nutrition Networking Luncheon – All Are Welcome!	
2:30pm – 4:00pm	265	Key Note Address by Atul Gawande, MD: Advanced Kidney Disease: Individualized Care, End-of-Life Transitions and Patient Safety/Shaul Massry Distinguished Lecture	◆
4:00pm – 4:15pm		Break	
4:15pm – 5:45pm	565	Joel D. Kopple Award Presentation	
4:15pm – 5:45pm	266	Update on KDOQI Guidelines and Controversies	◆
6:00pm – 7:30pm		Opening Ceremonies and Reception in the Exhibit Hall – Visit Posters/Exhibits	

Friday, April 29

TIME	SESSION #	SESSION	NOTES
7:00am – 8:00am		Continental Breakfast in the Exhibit Hall – Visit Posters/Exhibits	
8:30am – 10:00am	566	Neurological Issues Associated with CKD and DM	
8:30am – 10:00am	567	Potassium From Baths To Binders: How Does This Change Our Practice?	
8:30am – 10:00am	466	Pediatrics Quality-of-Life	✦
10:00am – 10:30am		Break	
10:30am – 12:00pm	568	What's New in Diabetes Management?	

• Separate Registration and/or Fee Required. ◆ Joint with Physicians. ✦ Joint with Councils.



Friday, April 29 (Continued)

TIME	SESSION #	SESSION	NOTES
10:30am – 12:00pm	576	Protein Nitrogen Balance and Adequacy	
10:30am – 12:00pm	579	Symptom Targeted Intervention	
12:00pm – 2:00pm		Break in the Exhibit Hall (Lunch Served 12:15pm – 1:15pm) – Visit Posters/Exhibits	
2:00pm – 3:30pm	367	Vascular Access	✦
2:00pm – 3:30pm	368	Controversies in Anemia Management	
2:00pm – 3:30pm	470	Transition of Care in ESRD: Teens to Adults	
2:00pm – 3:30pm	469	African-American Transplant and Home Modalities Strategies	✦
2:00pm – 3:30pm	669	What's New in Peritoneal Dialysis?	✦
2:00pm – 3:30pm	571	Are You Prepared for an ESRD Core Survey QAPI Review?	
3:30pm – 4:00pm		Break	
4:00pm – 5:30pm	572	Vegetarianism	
4:00pm – 5:30pm	530	Nutritional Poster Tour	•
4:00pm – 5:30pm	369	A Patient's Perspective: A Journey From Dialysis to Transplant to Patient Advocate	✦
4:00pm – 5:30pm	672	Complementary Medicine in Nephrology	✦
5:30pm – 7:00pm		Networking Reception in the Exhibit Hall – Visit Posters/Exhibits	

Saturday, April 30

TIME	SESSION #	SESSION	NOTES
7:30am – 10:30am		Break in the Exhibit Hall (Breakfast Served 7:30am – 9:00am) – Visit Posters/Exhibits	
9:30am – 11:00am	573	Fluids: What's It All About? UF Rate, Cardiac Events, and Management of Interdialytic Weight Gain	
9:30am – 11:00am	574	Gut Microbiome	
9:30am – 11:00am	277	Caring for the Older Patient with Kidney Disease	◆
11:00am – 11:30am		Break	
11:30am – 12:30pm	575	Resting Energy Expenditure: Late Breaking Research	
11:30am – 12:30pm	569	GI Tract: From Top to Bottom	
12:30pm – 1:30pm		Break	
1:30pm – 3:00pm	577	Changing Trends in Renal Economics and Measuring Quality: The Impact on Caregivers	
1:30pm – 3:00pm	578	Improved Biomarkers in MNT Use	
1:30pm – 3:00pm	478	Motivational Interviewing in Dialysis Adherence Study	✦
3:00pm – 3:30pm		Break	
3:30pm – 5:00pm	580	The Role of Exercise	
3:30pm – 5:00pm	282	Update on Nutritional Management and Protein Energy Wasting in CKD	◆

Sunday, May 1

TIME	SESSION #	SESSION	NOTES
8:00am – 9:30am	374	Transplantation From Start to Finish: Who Gets the Kidney?	✦
9:30am – 10:00am		Break	
10:00am – 11:30am	581	Communication Aikido	
11:30am		Meeting Adjourns	

• Separate Registration and/or Fee Required. ◆ Joint with Physicians. ✦ Joint with Councils.

Nephrology Social Worker Program

Planning Committee

Vernon Silva, LCSW, NSW-C

Program Chair

U.S. Renal Care — Lomita
Lomita, CA

Kimberly Gusse, MSW, LMSW, ACSW

Program Co-Chair

Helen DeVos Children's Hospital
Grand Rapids, MI

Dorothy Muench, MSW, LCSW, NSW-C

Continuing Education Chair

Triad Dialysis Center
High Point, NC

Kevin Ceckowski, MSW, LICSW

Walter Reed National Military Medical Center
Bethesda, MD

Jeff Harder, MSW, LICSW

University of Washington Medical Center
Seattle, WA

Elizabeth Jones, MSW, LCSW

DaVita Sterling
Sterling, Virginia

Karen Lofty, LICSW

Fresenius Medical Care of Rockingham County
Salem, NH

Jennifer McClain, MSW, LSW, NSW-C

Fresenius Medical Care – Fire Mesa Dialysis
Las Vegas, NV

Charlonda Thrower, LMSW

ESRD Network 14, Inc.
Dallas, TX

Continuing Education Information

The National Kidney Foundation Council of Nephrology Social Workers, provider #1014, is approved as a provider for social work continuing education by the Association of Social Work Boards (ASWB) www.aswb.org, phone: 1.800.225.6880, through the Approved Continuing Education (ACE) program. The National Kidney Foundation Council of Nephrology Social Workers maintains responsibility for the program.

National Kidney Foundation SW CPE is recognized by the New York State Education Department's State Board for Social Work as an approved provider of continuing education for licensed social workers #0064.

Social Workers will receive 21.5* continuing education clock hours for participating in this activity.

Conference registrants are responsible for making sure their state accepts the ASWB ACE provider as sufficient for CEUs, or if they need to do anything additional to independently receive state CEUs.

Note: Acquiring 21.5 continuing education clock hours requires continuous participation from Thursday morning through Sunday morning. Many participants opt for periodic breaks, which make their continuing education clock hours somewhat less. Additional continuing education clock hours are provided for courses requiring separate registration.*

*As of September 2015

Pre-Conference Courses

REQUIRED: Separate registration fee of \$60 for NKF Members, \$75 for Non-Members; includes light breakfast or boxed lunch, and continuing education clock hours. Participation is limited, so register early.

Nephrology Social Work 101: Learning/Reviewing the Clinical and Concrete Fundamentals

Course Directors: Jessica Phipps, MSW, LSW, and Jennifer McClain, MSW, LSW, NSW-C

Wednesday, April 27, 8:00am – 12:00pm

Session 420, 4.0 clock hours

Target Audience:

- Nephrology social workers who are new to the subspecialty
- Experienced nephrology social workers who would like to review basic skills
- NSW-C candidates

Course Description: This course provides a comprehensive review of the Conditions for Coverage and their interpretive guidelines, as they relate to nephrology social work services. Participants will complete this workshop with enhanced knowledge of techniques for implementing them into their fast-paced and culturally diverse treatment settings in an efficient and effective manner, while maintaining compliance. In addition, this workshop will provide a guide to developing a personal practice curriculum that will allow the participant to integrate the competencies for the NSW certification into everyday practice.



This Ain't No Tea Party: A Four-Hour Mindfulness Journey

Course Director: Gary Petingola, BSW, MSW, RSW
Wednesday, April 27, 8:00am – 12:00pm
Session 421, 3.75 clock hours

Target Audience: This course has been designed for nephrology social workers of all expert levels and in all nephrology practice settings who have familiarity with mindfulness meditation.

Course Description: Our patients come to us with the expectation that we are compassionate caregivers. But how can we know their suffering until we have touched suffering ourselves? The meditative practice of Tonglen allows us to understand and care for patients. It helps us to face pain in ourselves. This allows us to understand true compassion. This four-hour mindfulness meditative course is designed to offer the attendee the unique opportunity to explore concepts of anger, pain, authenticity, judgement, connection, and suffering in a safe setting. Participants will be invited to practice a variety of meditative techniques in this interactive experiential course that will parallel the trajectory of CKD, the hemodialysis session, and the arc of a relationship. Unlike other traditional conference offerings, this contemplative course will be intertwined with readings, poetry, music, silence, and gentle movement.

Building Skills to Manage the Most Difficult Patients as a Team

Course Director: Megan Prescott, LCSW, NSW-C
Wednesday, April 27, 1:00pm – 5:00pm
Session 422, 3.75 clock hours

Target Audience: Designed for both new and experienced social workers in the nephrology care setting.

Course Description: This course is designed to offer the attendee an understanding of the challenges associated with encountering mental illness and difficult patient behavior in the dialysis treatment environment, as well as tools for building mastery of these challenges as a team. Part 1 will focus on building understanding of the most common mental illnesses and tips for managing them in dialysis settings. Part 2 builds skills for managing the stress caused by these situations and skills to master communication and response under pressure. The course focuses on a team approach to enhance effectiveness, support, and consistency.

Violence in the Dialysis and Transplant Settings: Prevention, Immediate Intervention, and Post-Incident Management

Course Directors: Jane Kwatcher, MSW, LCSW, and Mathias Stricherz, EdD
Wednesday, April 27, 1:00pm – 5:00pm
Session 423, 4.0 clock hours

Target Audience: New and seasoned nephrology social workers.

Course Description: Designed for leaders and all members of the interdisciplinary team and floor staff, this training course examines the prevalence and incidence of threatened and actual violence, based on a national study that the course directors have conducted. This session focuses on identifying the characteristics of a potential perpetrator of violence, defining incidence, and parameters of perceived/actual threats or acts of violence in the nephrology setting, and discussing how to reduce risk and handle an incident of violent behavior. Tools include a framework for decision making and a model of violence management within the continuum of prevention, immediate intervention, and post-incident management.

Workshop

FRIDAY, APRIL 29, 4:00PM – 5:30PM

Guided Tour of the Exhibit Hall Research Posters, Session 430

Presenters: Teri Browne PhD, MSW, NSW-C, and Joseph Merighi, PhD, MSW

Workshop Description: An experiential, hand-on tour of abstracts featuring psychosocial content. What makes for a good poster? How do you identify key findings? Veteran instructors will help participants hone skills in assessing, and digesting (and building!) posters.

REQUIRED: Separate registration required. Complimentary, but participation is limited, so register early.

Nephrology Social Worker Program

Wednesday, April 27

TIME	SESSION #	SESSION	NOTES
8:00am – 12:00pm	420	Nephrology Social Work 101: Learning/Reviewing the Clinical and Concrete Fundamentals	•
8:00am – 12:00pm	421	This Ain't No Tea Party: A Four-Hour Mindfulness Journey	•
1:00pm – 5:00pm	422	Building Skills to Manage the Most Difficult Patient Situations as a Team	•
1:00pm – 5:00pm	423	Violence in Dialysis and Transplant Settings: Prevention, Immediate Intervention, and Post-Incident Management	•
6:30pm – 7:30pm	101	Healthcare Professionals Welcome Reception	✦

Thursday, April 28

TIME	SESSION #	SESSION	NOTES
8:00am – 9:30am	460	“Get Linked In” — Defining and Integrating the Social Work Role Within the Dialysis Team	
9:30am – 10:00am		Break	
10:00am – 11:30am	461	Depression Screening Tools: Policy and Nephrology Social Work Interventions	
10:00am – 11:30am	462	Psychosocial Aspects of Living Kidney Donations and Role of the Living Donor Advocate	
11:30am – 12:00pm		Break	
12:00pm – 2:00pm	463	Council of Nephrology Social Workers Networking Luncheon—All Are Welcome!	
2:30pm – 4:00pm	265	Key Note Address by Atul Gawande, MD: Advanced Kidney Disease: Individualized Care, End-of-Life Transitions and Patient Safety/Shaul Massry Distinguished Lecture	◆
4:00pm – 4:15pm		Break	
4:15pm – 5:45pm	464	How I Teach My Patients About Depression	
6:00pm – 7:30pm		Opening Ceremonies and Reception in the Exhibit Hall – Visit Posters/Exhibits	

Friday, April 29

TIME	SESSION #	SESSION	NOTES
7:00am – 8:00am		Continental Breakfast in the Exhibit Hall – Visit Posters/Exhibits	
8:30am – 10:00am	465	Dropping Storylines — A Mindfulness Approach to Sexuality for Patients with End-Stage Renal Disease	
8:30am – 10:00am	466	Pediatrics Quality-of-Life	
8:30am – 10:00am	363	Quality Assessment and Performance Improvement (QAI) Program	✦
10:00am – 10:30am		Break	
10:30am – 12:00pm	467	Tools for Managing Persons with Dementia During Treatment	
10:30am – 12:00pm	468	Ethical Implications: When Family Function and Dynamics Interfere With the Transplant Plans	★
10:30am – 12:00pm	365	When Disaster Strikes	✦
10:30am – 12:00pm	579	Symptom Targeted Intervention	
12:00pm – 2:00pm		Break in the Exhibit Hall (Lunch Served 12:15pm – 1:15pm) – Visit Posters/Exhibits	
2:00pm – 3:30pm	469	African-American Transplant and Home Modalities Strategies	
2:00pm – 3:30pm	470	Transition of Care in ESRD: Teens to Adults	
2:00pm – 3:30pm	571	Are You Prepared for an ESRD Core Survey QAPI Review?	✦
3:30pm – 4:00pm		Break	
4:00pm – 5:30pm	471	Caught in the Middle: When Contradictory Expectations of Patients, Staff, and Corporations Clash	★
4:00pm – 5:30pm	369	A Patient's Perspective: A Journey From Dialysis to Transplant to Patient Advocate	✦
4:00pm – 5:30pm	472	Pediatric Quality Assessment and Process Improvement: QAPI from Soup-to-Nuts	
4:00pm – 5:30pm	430	Guided Tour of the Exhibit Hall Research Posters	•
5:30pm – 7:00pm		Networking Reception in the Exhibit Hall – Visit Posters/Exhibits	

• Separate Registration and/or Fee Required. ◆ Joint with Physicians. ✦ Joint with Councils. ★ Ethics Session.



Saturday, April 30

TIME	SESSION #	SESSION	NOTES
7:30am – 10:30am		Break in the Exhibit Hall (Breakfast Served 7:30am – 9:00am) – Visit Posters/Exhibits	
9:30am – 11:00am	473	Monthly Lab Value Results: Nephrology Social Work Interventions	
9:30am – 11:00am	474	Treatment Options Education: Mapping Dialysis Modalities Onto Lifestyle	
9:30am – 11:00am	277	Caring for the Older Patient with Kidney Disease	◆
11:00am – 11:30am		Break	
11:30am – 12:30pm	475	STI in Action: Trainings, Applications, and Results	
11:30am – 12:30pm	476	Hands-On Research Guidance: Learn the Steps to Create a Poster for the SCM Exhibit Hall	
11:30am – 12:30pm	477	Social Work Collaboration: A Powerful Tool to Enhance Care for Transplant Patients	
12:30pm – 1:30pm		Break	
1:30pm – 3:00pm	478	Motivational Interviewing in Dialysis Adherence Study	
1:30pm – 3:00pm	479	Ready... Set... Wait...: The Time Between Listing and Transplant	
3:00pm – 3:30pm		Break	
3:30pm – 5:00pm	480	Support of Renal Patients and Families Facing End-of-Life Care Decisions: A Nephrology Social Worker's Reflection	★
3:30pm – 5:00pm	481	Building an Inter-Professional Bridge: Dialysis Unit Social Worker/Nephrologist Collaboration	

Sunday, May 1

TIME	SESSION #	SESSION	NOTES
8:00am – 9:30am	374	Transplantation From Start to Finish: Who Gets the Kidney?	◆◆
9:30am – 10:00am		Break	
10:00am – 11:30am	581	Communication Aikido	◆
11:30am		Meeting Adjourns	

◆ Separate Registration and/or Fee Required. ◆ Joint with Physicians. ◆ Joint with Councils. ★ Ethics Session.

Visit www.nkfclinicalmeetings.org for additional program details and up-to-date information on SCM16.

Transplant Professional Program

Continuing Education Information

As a designated Approved Provider by the American Board for Transplant Certification (ABTC), the National Kidney Foundation, grants up to 31.5 Category 1 Continuing Education Points for Transplant Certification (CEPTCs) for this offering.

Pre-Conference Courses

REQUIRED: Separate registration fee (see below for pricing). Includes light breakfast and/or box lunch, and CE credits. Participation is limited, so register early.

Pricing

Half-Day Courses: \$60 NKF Members, \$75 Non-Members

Full-Day Courses: \$200 NKF Members, \$225 Non-Members

Kidney Transplant: Principles and Practices

Course Director: Krista Lentine, MD, PhD

Wednesday, April 27, 7:30am – 5:30pm

Session 220, 7.5 credits/contact hours

See page 8 for details.

Violence in the Dialysis and Transplant Settings: Prevention, Immediate Intervention, and Post-Incident Management

Course Directors: Jane Kwatcher, MSW, LCSW, and Mathias Stricherz, EdD

Wednesday, April 27, 1:00pm – 5:00pm

Session 423, 4.0 clock hours

See page 28 for details.

Lunch Workshops

REQUIRED: Separate registration fee of \$50; includes a box lunch and CME credits. Participation is limited to 75 each, so register early.

THURSDAY, APRIL 28, 12:00pm – 2:00pm

Treatment of BP in Special Populations, Session 230

Chairs: Debbie Cohen, MD, and Raymond Townsend, MD, FAHA, FCHBPR

Presenter(s): Vesna Garovic, MD, Raymond Townsend, MD, FAHA, FCHBPR, and Matthew Weir, MD

Workshop Description: This workshop will establish the most appropriate treatments and medication choices in the pregnant patient with hypertension, hypertension patients with multiple medication intolerances, and in renal transplant patients.

#nephrology, Session 234

Chair: Joel Topf, MD

Presenter(s): Joel Topf, MD, Matthew Sparks, MD, and Kenar Jhaveri, MD

Workshop Description: This interactive workshop will teach attendees how healthcare professionals and patients are using social media. Attendees will learn how to get started on Twitter, and will be able to avoid pitfalls of social media to ensure that it is used safely.

SATURDAY, APRIL 30, 11:30am – 1:00pm

Teach Each Other Well: Improving Communication Between Providers and Patients, Session 235

Chairs: Katharine Cheung, MD, and Vicki Jackson, MD, MPH

Presenter(s): Robert Cohen, MD, and Jane Schell, MD

Workshop Description: This workshop will discuss techniques to improve communication between providers and patients in the inpatient and outpatient settings, and identify concrete methods to discuss difficult topics of conversation directly related to ESRD. Methods to engage families and patients who must make difficult decisions regarding direction of care will also be covered.



Transplant Professional Program

Wednesday, April 27

TIME	SESSION #	SESSION	NOTES
7:30am – 5:30pm	220	Kidney Transplant: Principles and Practices	•
1:00pm – 5:00pm	423	Violence in Dialysis and Transplant Settings: Prevention, Immediate Intervention, and Post-Incident Management	•
6:30pm – 7:30pm	101	Healthcare Professionals Welcome Reception	

Thursday, April 28

TIME	SESSION #	SESSION	NOTES
8:00am – 9:30am	260	Kidney Transplantation: Optimizing Access and Outcomes in 2016	
8:00am – 9:30am	460	“Get Linked In” – Defining and Integrating the Social Work Role Within the Dialysis Team	
9:30am – 10:00am		Break	
10:00am – 11:30am	264	Kidney Donation: What Every Nephrologist Needs to Know	
11:30am – 12:00pm		Break	
12:00pm – 2:00pm	230	Lunch Workshop: Treatment of BP in Special Populations	•
12:00pm – 2:00pm	234	Lunch Workshop: #nephrology	•
2:30pm – 4:00pm	265	Key Note Address by Atul Gawande, MD: Advanced Kidney Disease: Individualized Care, End-of-Life Transitions and Patient Safety/Shaul Massry Distinguished Lecture	
4:00pm – 4:15pm		Break	
4:15pm – 5:45pm	266	Update on KDOQI Guidelines and Controversies	
4:15pm – 5:45pm	267	Back with a Vengeance: The Risk of Recurrent GN in the Allograft	
6:00pm – 7:30pm		Opening Ceremonies and Reception in the Exhibit Hall – Visit Posters/Exhibits	

Friday, April 29

TIME	SESSION #	SESSION	NOTES
7:00am – 8:00am		Continental Breakfast in the Exhibit Hall – Visit Posters/Exhibits	
8:30am – 10:00am	665	Transplant Update: Care After the Transplant	
8:30am – 10:00am	466	Pediatrics Quality-of-Life	
10:00am – 10:30am		Break	
10:30am – 12:00pm	468	Ethical Implications: When Family Function and Dynamics Interfere With the Transplant Plans	
12:00pm – 2:00pm		Break in the Exhibit Hall (Lunch Served 12:15pm – 1:15pm) – Visit Posters/Exhibits	
2:00pm – 3:30pm	469	African-American Transplant and Home Modalities Strategies	
2:00pm – 3:30pm	470	Transition of Care in ESRD: Teens to Adults	
2:00pm – 3:30pm	571	Are You Prepared for an ESRD Core Survey QAPI Review?	
3:30pm – 4:00pm		Break	
4:00pm – 5:30pm	369	A Patient’s Perspective: A Journey From Dialysis to Transplant to Patient Advocate	
4:00pm – 5:30pm	471	Caught in the Middle: When Contradictory Expectations of Patients, Staff, and Corporations Clash	
5:30pm – 7:00pm		Networking Reception in the Exhibit Hall – Visit Posters/Exhibits	

- Separate Registration and/or Fee Required.

Saturday, April 30

TIME	SESSION #	SESSION	NOTES
7:30am – 10:30am		Break in the Exhibit Hall (Breakfast Served 7:30am – 9:00am) – Visit Posters/Exhibits	
9:30am – 11:00am	673	Transplant Workup	
11:00am – 11:30am		Break	
11:30am – 12:30pm	371	Treatment Options Education	
11:30am – 12:30pm	477	Social Work Collaboration: A Powerful Tool to Enhance Care for Transplant Patients	
11:30am – 1:00pm	235	Lunch Workshop: Teach Each Other Well: Improving Communication Between Providers and Patients	•
1:00pm – 1:30pm		Break	
1:30pm – 3:00pm	479	Ready... Set... Wait...: The Time Between Listing and Transplant	
3:00pm – 3:30pm		Break	
3:30pm – 5:00pm	282	Update on Nutritional Management and Protein Energy Wasting in CKD	

Sunday, May 1

TIME	SESSION #	SESSION	NOTES
8:00am – 9:30am	374	Transplantation From Start to Finish: Who Gets the Kidney?	
9:30am – 10:00am		Break	
10:00am – 11:30am	581	Communication Aikido	
11:30am		Meeting Adjourns	

- Separate Registration and/or Fee Required.

Visit www.nkfclinicalmeetings.org for additional program details and up-to-date information on SCM16.



REGISTRATION INFORMATION

Advanced Registration Deadline: February 19, 2016

Please visit the NKF website at www.nkfclinicalmeetings.org to register. Members will need their membership ID number to obtain the discounted member rates. Please see the website for further details.

NOTE: Registration after February 19, 2016 will result in an additional fee of \$50 (\$100 on site).

General Meeting registration fees include:

- Attendance from Thursday, April 28 – Sunday, May 1
- All meals/activities in the Exhibit Hall (2 breakfasts, 1 lunch, 2 networking receptions)
- Professional Council Networking Luncheons
- Breakfast, lunch, and dinner corporate supported symposia (seating is limited and on a first-come, first-served basis)
- CME/CE Credits/contact hours

Pre-Conference Courses (Wednesday, April 27) and Workshops

All pre-conference courses and lunch workshops require a separate registration and fee.

Go to www.nkfclinicalmeetings.org to obtain additional information and to register.

GENERAL MEETING REGISTRATION FEES

DISCIPLINE	OCTOBER 15, 2015 – FEBRUARY 19, 2016	FEBRUARY 20, 2016 – APRIL 25, 2016	ON-SITE
Physicians Pharmacists General Attendees	\$350 NKF Member \$530 Non-Member \$150 Fellows (proof of status required) \$100 Resident (proof of status required)	\$400 NKF Member \$580 Non-Member \$150 Fellows (proof of status required) \$100 Resident (proof of status required)	\$450 NKF Member \$630 Non-Member \$150 Fellows (proof of status required) \$100 Resident (proof of status required)
Physician Assistants Nurse Practitioners Nurses Dietitians Social Workers	\$275 NKF Member \$375 Non-Member \$25 Student (proof of status required)*	\$325 NKF Member \$425 Non-Member \$25 Student (proof of status required)*	\$375 NKF Member \$475 Non-Member \$25 Student (proof of status required)*
Technicians	\$150 NKF Member \$175 Non-Member \$25 Student (proof of status required)*	\$150 NKF Member \$175 Non-Member \$25 Student (proof of status required)*	\$150 NKF Member \$175 Non-Member \$25 Student (proof of status required)*

* Must be a full-time student.

Cancellation Policy: Refund requests must be made in writing and postmarked before March 28, 2016 and are subject to a 10% administrative fee. Requests postmarked after March 28, 2016 will not be accepted.

HOTEL ACCOMMODATIONS

Advance Housing Deadline: April 1, 2016

Rooms are available at the Boston Marriott Copley Place, Sheraton Boston Hotel, and Westin Copley Place Boston. The discounted group rate is \$239 – \$269 per night, depending on the hotel (plus tax). Reservation confirmations will be sent within 5 days of receipt by the hotel's reservations department. Should you not receive your confirmation, please contact the hotel to ensure your request was processed.

Hotel reservations can be made online at: www.nkfclinicalmeetings.org

Reservations can also be made by calling the hotel and stating that you are a SCM16 attendee. For additional hotel information, please visit the NKF website at www.nkfclinicalmeetings.org

Note: *Although NKF has reserved room blocks within each hotel, it is possible for the blocks to be sold out. To ensure accommodations with these, we encourage you to make your hotel arrangements early.*



Faculty **As of September, 2015*

Sharon Anderson, MD

Oregon Health and Science University
Portland, OR

Gerald Appel, MD

Columbia Presbyterian Hospital
New York, NY

Linda Awdishu, PharmD, MAS

UC San Diego Skaggs School of
Pharmacy and Pharmaceutical Sciences
La Jolla, CA

Sean Bagshaw, MD, MSc, FRCPC

University of Alberta
Edmonton, AB, Canada

Lynda Ball, MSN, RN, CNN

ESRD Network 13
Edmond, OK

Joanne Bargman, MD, FRCPC

Toronto General Hospital
Toronto, ON, Canada

Brendan Barrett, MD, MSc, FRCPC

Memorial University
St. Johns, NL, Canada

Christopher Barrett Bowling, MD

Emory University School of Medicine
Atlanta, GA

Rajit Basu, MD, FAAP, FCCM

Cincinnati Children's Hospital Medical
Center
Cincinnati, OH

Lynn Beaulieu, RN, MSN, ANP-BC

Mayo Clinic
Rochester, MN

Laurence Beck, Jr., MD, PhD

Boston University School of Medicine
Boston, MA

Laurie Benton, PhD, MPAS, PA-C, RN, FNKF

Scott and White Medical Center
Temple, TX

Jeffrey Berns, MD, FNKF

Hospital of the University of Pennsylvania
Philadelphia, PA

Carl Boethel, MD, FCCP, FAASM, D'ABSM

Baylor Scott & White Health
Temple, TX

Steve Bogatz, MSW, LCSW, NSW-C

FMS- Central CT Dialysis
Newington, CT

Shaun Boyd, LCSW

DaVita Healthcare Partners, Inc.
Asheville, NC

Debbie Brady, LCSW, ACSW, NSW-C

Arkansas Children's Hospital
Little Rock, AR

Josephine Briggs, MD

National Institutes of Health
Bethesda, MD

Daniel Brooks, DSc

Boston University School of Public
Health
Boston, MA

Teri Browne, PhD, MSW, NSW-C

University of South Carolina College of
Social Work
Irmo, SC

Laura Byham-Gray, PhD, RD

Rutgers, The State University of New
Jersey
Newark, NJ

Pietro Canetta, MD

Columbia University Medical Center
New York, NY

Katie Cardone, PharmD, BCACP, FNKF

Albany College of Pharmacy and Health
Sciences
Albany, NY

Kevin Ceckowski, MSW, LICSW

Walter Reed National Military Medical
Center
Bethesda, MD

Christopher Chan, MD

Toronto General Hospital
Toronto, ON, Canada

Alexis Chettiar, MSN, ACNP-BC

University of California San Francisco
Oakland, CA

Katharine Cheung, MD

Central Vermont Medical Center
Burlington, VT

Julio Chirinos, MD, PhD

Hospital of the University of Pennsylvania
Veteran's Administration Medical Center
Philadelphia, PA

David Ciceri, MD

Baylor, Scott & White Health
Temple, TX

Andrew Cohen, MD

Rhode Island Hospital
Providence, RI

Debbie Cohen, MD

University of Pennsylvania
Perelman School of Medicine
Philadelphia, PA

Robert Cohen, MD

Beth Israel Deaconess Medical Center
Boston, MA

Danilo Concepcion, CBNT, CCHT-A, FNKF

St. Joseph Hospital
Orange, CA

Deborah Cote, MSN, RN, CNN, NE-BC

University of Virginia Health System
Verona, VA

Daniel Coyne, MD

Washington University School of
Medicine
St. Louis, MO

Deidra Crews, MD

Johns Hopkins University
Baltimore, MD

Nikole Cronk, PhD

University of Missouri Health System
Columbia, MO

Gary Curhan, MD, ScD

Brigham and Women's Hospital
Boston, MA

Neera Dahl, MD, PhD

Yale School of Medicine
New Haven, CT

Kristine D'Angelo David, RD

Sigma-Tau Pharmaceuticals, Inc.
Gaithersburg, MD

Ingemar Davidson, MD

University of Texas Southwestern
Medical Center
Dallas, TX

Sara Davison, MD, MHSc, FRCPC

University Alberta
Edmonton, AB, Canada

Jane Davis, DNP, CRNP, MSN, FNKF
University of Alabama at Birmingham
Birmingham, AL

Desiree DeWaal, RD
University of Vermont Medical Center
Burlington, VT

Clarissa Diamantidis, MD
Duke University School of Medicine
Durham, NC

Noelle Dimitri, LICSW, CCTSW
Transplant Institute
Boston, MA

Anne Diroll, RN, CNN
Consultant
Rocklin, CA

Darlene Dobkowski, PA-C, RN
Advanced Interventional Radiology
Services
Wayne, NJ

Paul Drawz, MD
University of Minnesota Medical School
Minneapolis, MN

Amaka Eneanya, MD
Massachusetts General Hospital
Boston, MA

Elizabeth Evans, RN, MSN, DNP
Renal Medicine Associates
Albuquerque, NM

Amy Evenson, MD, MPH
Harvard Medical School
Boston, MA

Rachel Eyler, PharmD
University of Connecticut School of
Pharmacy
Storrs, CT

Harvey Feldman, MD
Nova Southeastern University
Ft. Lauderdale, FL

Fernando Fervenza, MD, PhD, FNKF
Mayo Clinic
Rochester, MN

Jeffrey Fink, MD, FNKF
University of Maryland
Baltimore, MD

Charles Foulks, MD
University of Oklahoma
Tulsa, OK

Jean Francis, MD
Boston University School of Medicine
Boston, MA

Barry Freedman, MD, FACP
Wake Forest School of Medicine
Winston-Salem, NC

Linda Fried, MD, MPH, FNKF
VA Pittsburgh Healthcare System
Pittsburgh, PA

Allon Friedman, MD
Indiana University Health
Indianapolis, IN

Lynne Gafford, NP
Henry Ford Health System
Rochester Hills, MI

Vesna Garovic, MD
Mayo Clinic
Rochester, MN

Atul Gawande, MD, MPH
Brigham and Women's Hospital
Boston, MA

Jennifer Geiger, MSW, LSW, NSW-C
Fresenius Medical Care North America
Deptford, NJ

John Gennari, MD
University of Vermont
Burlington, VT

Ali Gharavi, MD
New York-Presbyterian/Columbia
New York, NY

John Gill, MD, MS
St. Paul's Hospital
Vancouver, BC, Canada

Richard Glassock, MD, MACP
Geffen School of Medicine at the
University of California Los Angeles
Los Angeles, CA

David Goldfarb, MD, FACP, FASN
New York Veterans Affairs Medical
Center
New York, NY

Janelle Gonyea, RDN, LD, FNKF
Mayo Clinic
Rochester, MN

Craig Gordon, MD
Boston University School of Medicine
Boston, MA

Jeremy Goverman, MD
Massachusetts General Hospital
Boston, MA

Anna Greka, MD, PhD
Brigham and Women's Hospital
Boston, MA

Vanessa Grubbs, MD
University of California at San Francisco
San Francisco, CA

Margarita Gurri, PhD, CSP
Red Shoe Institute
Dania Beach, FL

Kimberly Gusse, LMSW, ACSW
Helen DeVos Children's Hospital
Grand Rapid, MI

Debra Hain, PhD, APRN, ANP, GNP
Cleveland Clinic Florida
Weston, FL

Janet Hakanson-Stacy
Fresenius Medical Center-North America
Springfield, MA

Yoshio Hall, MD
University of Washington Medical Center
Seattle, WA

Jeffrey Harder, MSW, LICSW
University of Washington Medical Center
Seattle, WA

Kathy Schiro Harvey, MS, RD, CSR
Puget Sound Kidney Centers
Mountlake Terrace, WA

Rebecca Hays, APSW, NSW-C
University of WI Hospital and Clinics
Madison, WI

Jenna Henderson, ND
The Life Center
West Hartford, CT

Joanne Hindlet, ACNP, BC, CNN-NP
Houston Nephrology Group
Houston, TX

Jonathan Hogan, MD
Hospital of the University of Pennsylvania
Philadelphia, PA

Kerri Holloway, BSN, RN, CNN
Fresenius Medical Care
Burlson, TX

Kathy Houle, NP
Marquette General/Duke Lifepoint
Hospital
Marquette, MI



Vicki Jackson, MD, MPH

Massachusetts General Hospital
Boston, MA

Aimee Jarenowicz, RD, LDN

Shield HealthCare
Chicago Ridge, IL

Kenar Jhaveri, MD

Albert Einstein College of Medicine
Great Neck, NY

Douglas Johnson, MD

Lehigh Valley Hospital
Allentown, PA

Elizabeth Jones, MSW, LCSW

DaVita, Inc.
Sterling, VA

Peter Juergensen, PA-C

Metabolism Associates
Cheshire, CT

Kamyar Kalantar-Zadeh, MD, MPH, PhD, FNKF

University of California Irvine, School of Medicine
Orange, CA

Mihir Kamdar, MD

Massachusetts General Hospital
Boston, MA

Andre Kaplan, MD, FACP, FASN

University of Connecticut Health Center
Farmington, CT

Pamila Keech, MD

Puget Sound Kidney Centers
Kirkland, WA

Christine Kessler, MN, CNS, ANP, BC-ADM, CDTC, FAANP

Metabolic Medicine Associates
King George, VA

Ramesh Khanna, MD

University of Missouri
Columbia, MO

Beverly Kimball, PA-C

Marshfield Clinic
Rice Lake, WI

Alan Kliger, MD

Yale New Haven Health System
New Haven, CT

Csaba Kovesy, MD

University of Tennessee Health Science Center
Memphis, TN

Holly Kramer, MD, MPH

Loyola University Medical Center
Maywood, IL

Daniela Kroshinsky, MD, MPH

Massachusetts General Hospital
Boston, MA

Jane Kwatcher, MSW, LCSW

DaVita Health Care Partners, Inc.
Claremont, CA

Eduardo Lacson, Jr., MD

Fresenius Medical Care
Lexington, MA

Nadiya Lakhani, RDN, CSR, LD

Dallas Nephrology Associates
Dallas, TX

Timmy Lee, MD, MSPH, FACP, FASN

University of Alabama at Birmingham
Birmingham, AL

Krista Lentine, MD, PhD

Saint Louis University
Saint Louis, MO

Thomas Lepetich, LCSW

DaVita - Memphis Street Renal Center
Spring Lake, NJ

Denise Link, PA-C

The University of Texas Southwestern Medical Center
Irving, TX

Karen Lofty, LICSW

Fresenius Medical Care – North America
Salem, NH

Charmaine Lok, MD, FNKF

Toronto General Hospital
Toronto, ON

Franklin Maddux, MD

University of North Carolina School of Medicine
Chapel Hill, NC

Rajeev Malhotra, MD

Massachusetts General Hospital
Boston, MA

Meredith Marinaro, MS, RD

Dialysis Clinic, Inc.
Farmington, CT

Rebecca Maxson, PharmD, BCPS

Auburn University
Birmingham, AL

Linda McCann, RD, CSR

Satellite Healthcare, Inc.
San Jose, CA

Jennifer McClain, MSW, LSW, NSW-C

Fresenius Medical Care - Fire Mesa
Dialysis
Las Vegas, NV

Melissa McCool, LCSW

STI Innovations
Leucadia, CA

Christopher McIntyre, MD

London Health Sciences Centre
Victoria Hospital
London, ON, Canada

Mildred Sue McMannis, PhD, BSN, MSN

Scott & White Hospital
Temple, TX

Beth McQuiston, MD, MS, RD

Rush University Medical Center
Chicago, IL

Mark Meier, LICSW

University of Minnesota
St. Paul, MN

Joseph Merighi, MSW, PhD, LISW

University of Minnesota School of Social Work
Saint Paul, MN

Bruce Molitoris, MD

Indiana University School of Medicine
Indianapolis, IN

Miklos Molnar, MD

University of Tennessee Health Science Center
Memphis, TN

Beth Morlang, RD, LD

Bright Dialysis
Ft Pierce, FL

Dorothy Muench, MSW, LCSW, NSW-C

Triad Dialysis Center
High Point, NC

Klemens Myers, MD

Tufts Medical Center
Boston, MA

Mohanram Narayanan, MD

Scott & White Healthcare
Temple, TX

Andrew Narva, MD, FACP, FASN

National Institutes of Health
Bethesda, MD

Rosalynn Nazarian, MD

Massachusetts General Hospital
Boston, MA

Dan Negoianu, MD

University of Pennsylvania Health System
Philadelphia, PA

Jennifer Nelms, RD, LDN

Fresenius Medical Care – North America
Newburyport, MA

Mark Neumann, MS

Nephrology News & Issues
Phoenix, AZ

Sagar Nigwekar, MD, MMSc

Harvard University
Boston, MA

Allen Nissenon, MD, FNKF

DaVita Healthcare Partners Inc.
El Segundo, CA

Thomas Nolin, PharmD, PhD

University of Pittsburgh School of
Pharmacy
Pittsburgh, PA

Chris Oberg, CNP

Renal Medicine Associates, LTD
Albuquerque, NM

**Maureen O’Grady-Hamre, LCSW,
NSW-C**

DaVita Healthcare Partners, Inc.
Fair Lawn, NJ

**Amy Barton Pai, PharmD, BCPS,
FASN, FCCP**

Albany College of Pharmacy and Health
Sciences
Albany, NY

Manjunath Pai, PharmD

Albany College of Pharmacy & Health
Sciences
Albany, NY

Paul Palevsky, MD, FNKF

VA Pittsburgh Healthcare System
Sewickley, PA

Martha Pavlakis, MD

Beth Israel Deaconess Medical Center
Boston, MA

York Pei, MD

University Health Network
Toronto, ON, Canada

Aldo Peixoto, MD

Yale University School of Medicine
New Haven, CT

Cintia Perez, RN, MSN, CNN

St. Joseph Hospital
Corona, CA

Jeffrey Perl, MD, SM, FRCPC

St. Michael’s Hospital
University of Toronto
Toronto, ON

Ron Perrone, MD

Tufts Medical Center
Boston, MA

Gary Petingola, BSW, MSW, RSW

Diabetes Care Service
Sudbury, ON, Canada

Jessica Phipps, MSW, LSW

Fresenius Medical Care – North America
Plainfield, NJ

Beth Piraino, MD, FNKF

University of Pittsburgh School of
Medicine
Pittsburgh, PA

Martin Pollak, MD

Beth Israel Deaconess Medical Center
Boston, MA

Lynn Poole, FNP, CNN

ESRD Network Coordinating Center
McLean, VA

Daniel Pratt, MD

Massachusetts General Hospital
Boston, MA

Megan Prescott, LCSW, NSW-C

University of Colorado Hospital
Highlands Ranch, CO

Houry Puzanian, PhD

University of Illinois at Chicago
Chicago, IL

Mahboob Rahman, MD

Case Western Reserve University
Cleveland, OH

Dominic Raj, MD

George Washington University
Washington, DC

Helmut Rennke, MD

Brigham & Women’s Hospital
Boston, MA

Connie Rhee, MD

University of California
Irvine, CA

Bruce Robinson, MD

Arbor Research Collaborative for Health
Ann Arbor, MI

Rudolph Rodriguez, MD, FACP

Puget Sound VA Medical Center
Seattle, WA

Sylvia E. Rosas, MD, MSCE, FNKF

Harvard University
Joslin Diabetes Center
Boston, MA

Kamalanathan Sambandam, MD

University Of Texas
Southwestern Medical Center
Dallas, TX

Rajiv Saran, MD

University of Michigan
Ann Arbor, MI

Mark Sarnak, MD

Tufts Medical Center
Boston, MA

Colleen Satarino, MSW

University of Michigan Health System
Ann Arbor, MI

Dori Schatell, MS

Medical Education Institute
Madison, WI

Jane Schell, MD

University of Pittsburgh School of
Medicine
Pittsburgh, PA

Wendy Schrag, LMSW, ACSW

Fresenius Medical Care – North America
Newton, KS

Michael Schwing, LCSW

Hewell Kid’s Kidney Center
Orlando, FL

Adam Segal, MD

Harvard Medical School
Boston, MA

Dorry Segev, MD, PhD

Johns Hopkins University
Baltimore, MD

Stephen Seliger, MD

University of Maryland
Baltimore, MD

Beth Shanaman, RD

Northwest Kidney Centers
Seattle, WA

Michael Shapiro, MD

Denver Nephrology
Denver, CO



Richard Sherman, MD
Rutgers RWJ Medical School
New Brunswick, NJ

Domenic Sica, MD
Medical College of Virginia
Richmond, VA

Meghan Sise, MD
Massachusetts General Hospital
Boston, MA

Elena Slavcheva, MD
Scott & White Memorial Hospital
Temple, TX

Richard Smith, MD
University of Iowa
Carver College of Medicine
Iowa City, IA

Alexis Snead, MD
AmeriPath
Oklahoma City, OK

Mathew Sorensen, MD, MS
University of Washington School of
Medicine
Seattle, WA

Matthew Sparks, MD
Duke University
Durham, NC

Felicia Speed, LMSW
Fresenius Medical Care – North America
Waltham, MA

Robert Stanton, MD
Harvard University
Joslin Diabetes Center
Boston, MA

Alison Steiber, PhD, RDN
Academy of Nutrition and Dietetics
Cleveland, OH

Richard Sterns, MD
Rochester General Health Center
Rochester, NY

Sarah Stevenson, LICSW, NSW-C
Providence VA Medical Center
Providence, RI

Kristin Stockard, LICSW
Seattle Children's Hospital
Seattle, WA

Mathias Stricherz, EdD
New Mexico Behavioral Health Institute
Montezuma, NM

Mary Sundell, MLAS, RD, LDN, CCRP
Vanderbilt Dialysis Clinic
Nashville, TN

Katalin Susztak, MD, PhD
University of Pennsylvania
Perelman School of Medicine
Philadelphia, PA

John Sweeny, BA, CHT
Baxter Healthcare
Largo, FL

Sandra Taler, MD
Mayo Clinic
Rochester, MN

Francesca Tentori, MD
Arbor Research Collaborative for Health
Ann Arbor, MI

Ravi Thadhani, MD
Massachusetts General Hospital
Boston, MA

Charlonda Thrower, LMSW
ESRD Network 14
Dallas, TX

Joel Topf, MD
St. John's Hospital
Detroit, MI

**Raymond Townsend, MD, FAHA,
FCHBPR**
University of Pennsylvania
Perelman School of Medicine
Philadelphia, PA

**Ruchir Trivedi, MD, MMedSci,
MRCP(UK)**
University of Connecticut School of
Medicine
Farmington, CT

Mandy Trolinger, MS, RD, PA-C
Denver Nephrology
Highlands Ranch, CO

Lara Tushla, LCSW, NSW-C
Rush University Medical Center
Chicago, IL

Tushar Vachharajani, MD, FASN, FACP
W.G.(Bill) Hefner VA Medical Center
Salisbury, NC

Joseph Vassalotti, MD, FNKF
National Kidney Foundation
New York, NY

Sus Waikar, MD
Brigham & Women's Hospital
Boston, MA

Amy Waterman, PhD
Washington University School of
Medicine
St. Louis, MO

Suzanne Watnick, MD
Oregon Health Sciences University
Portland, OR

Daniel Weiner, MD, MS, FNKF
Tufts Medical Center
Boston, MA

Angela Weinstock, RD, LD
DaVita Green Valley Dialysis
Henderson, NV

Matthew Weir, MD
University of Maryland School of
Medicine
Baltimore, MD

Barbara Weis Malone, RN, CFNP
University of Colorado Denver
Golden, CO

Lawrence Weisberg, MD, FNKF
Cooper Health System
Camden, NJ

Karen Weisen, MS, RD, LDN
Geisinger Health System
Danville, PA

**Catherine Wells, DNP, ACNP-BC,
CNN-NP**
University of Mississippi Health Care
Jackson, MS

Michael Wolf, PhD, MPH
Northwestern University
Feinberg School of Medicine
Chicago, IL

Kim Zuber, MS, PA-C, FNKF
Metropolitan Nephrology
Alexandria, VA

CALL FOR ABSTRACTS

ABSTRACT SUBMISSION DEADLINE:

DECEMBER 2, 2015

WWW.NKFCLINICALMEETINGS.ORG

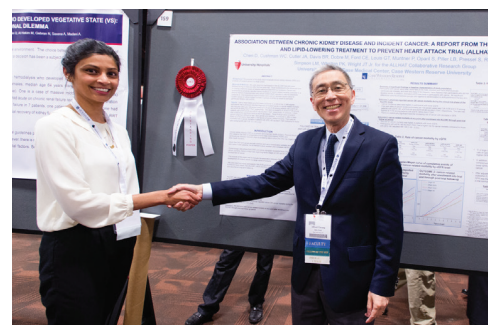
Take this opportunity to showcase your latest research results. Accepted abstracts will be published in the March/April 2016 issue of the *AJKD*, *ACKD*, *JRN*, or *JNSW* (depending on discipline) and posters will be presented at the NKF 2016 Spring Clinical Meetings. Prizes will be awarded to the top poster presenters.

Benefits in the presentation of original science include:*

- Online availability (NKF website and mobile app)
- Publication in a professional journal
- Exposure to 2,500-plus kidney healthcare professionals (via poster display)
- Compendium of accepted abstracts to be provided to all participants
- An opportunity to become one of the top poster presenters

*accepted abstracts only

Posters accepted and presented will be eligible for a prize. Posters will be judged on site by a specially designated committee.



For abstract submission instructions and additional information, visit www.nkfclinicalmeetings.org or contact us at clinicalmeetings@kidney.org

PROFESSIONAL EDUCATION RESOURCE CENTER

PERC

FREE* Online CME/CE for:

- Physicians
- Pharmacists
- Advanced Practitioners
- Nurses
- Dialysis Technicians
- Dietitians
- Social Workers
- Transplant Professionals



Benefits of PERC

- Personalized profile/login
- FREE for NKF members
- View your completed activities in one place
- More discipline-specific courses than ever before!
- Earn CME/CEs anytime, anywhere!

Browse our
activity offerings
today!

[kidney.org/education](https://www.kidney.org/education)

Check back regularly
for additional courses.



National
Kidney
Foundation®

Members Get the Best Perks

Join or renew to get exclusive discounts on registration to the NKF 2016 Spring Clinical Meetings and practical resources at your fingertips – 365 days a year!

Additional NKF Member Benefits Include:

- Subscriptions to NKF journals and publications: *AJKD, ACKD, JRN, JNSW, RenaLink, Currently Kidney* (depending on discipline)
- Savings on all educational programs, resources, and items in the NKF online store
- Free online courses in NKF's new Professional Education Resource Center (PERC)
- A chance to receive special NKF awards, scientific research grants, and educational stipends
- Eligibility for professional designations and certifications (depending on discipline).



**For more information and to join NKF, visit
www.kidney.org/membership**

Venue
Hynes Convention Center
Boston, MA

Hotels
Sheraton Boston
Westin Copley Place
Marriott Copley Place

Important Deadlines
Abstract Submission:
December 2, 2015

Educational Stipends:
January 15, 2016

Advance Registration:
February 19, 2016

Advance Housing Reservations:
April 1, 2016

**For the most up-to-date information on SCM16,
visit www.nkfclinicalmeetings.org**



Important Dates	
August 26, 2015	Exhibitor Prospectus Available
September 1, 2015	Preliminary Program Information Available
September 11, 2015	Abstract Submission Form Available
October 15, 2015	Registration and Hotel Reservation Forms Available
December 2, 2015	Abstract Submission Deadline
February 19, 2016	Early Bird Registration Deadline
March 7, 2016	Advanced Housing Deadline
April 27 – May 1, 2016	NKF 2016 Spring Clinical Meetings

Your “one stop shop” for all your SCM16 needs!

- Program Details
- Online Registration
- Faculty
- Award Winners
- Housing
- Educational Stipends
- Exhibitor Information