

If I have seen further, it is by
standing upon the shoulders of

GIANTS

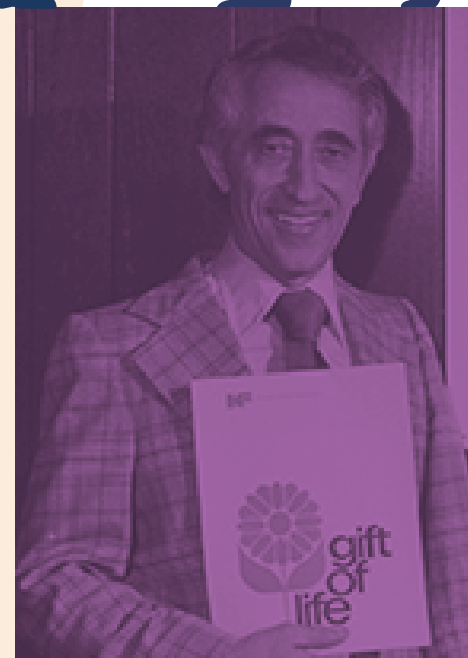
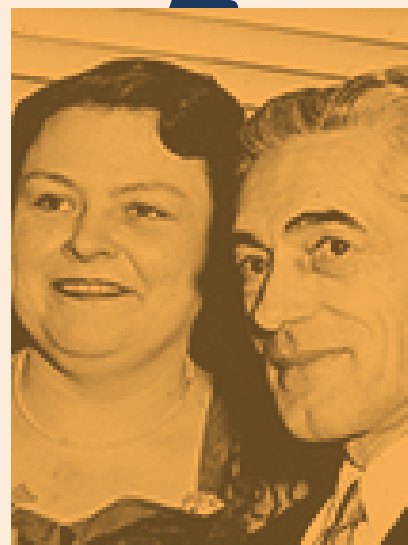
— Sir Isaac Newton




ANNUAL REPORT FY 2020



NATIONAL KIDNEY
FOUNDATION®





Sir Isaac Newton, the 17th century physicist and mathematician, said:

“If I have seen further, it is by standing upon
the shoulders of giants.”

TABLE OF CONTENTS

A Message from Leadership	4
Kidney Disease at a Glance	10
NKF Stats at a Glance	12
Advancing Kidney Transplantation	14
Focus on Patients	17
Kidney Health Awareness for All	19
Making Lives Better Research	22
Changing Laws and Influencing Minds	25
Aiding the Professionals	27
Corporate Champion	30
Our Financial Overview	32
NKF Serving the Local Community	46
What's to Come	49

A MESSAGE FROM LEADERSHIP

THIS year has been remarkable in so many ways. In a matter of months, not only has the world changed, but our lifestyles have changed dramatically, especially for our courageous kidney patients. We began our fiscal year on April 1, 2019, feeling optimistic about the advancements in kidney health, knowing the coming year would be filled with exciting announcements and leaps in progress. We ended the fiscal year on March 30, 2020 during a worldwide pandemic that is disproportionately deadly for kidney patients and creating new kidney patients.

Like the rest of the world, we didn't see COVID-19 coming but we suspected very early on that the outbreak would be especially rough on our kidney community.

When the pandemic hit the world, so many froze in shock. But our team did just the opposite – we got to work. Five hundred thousand dialysis patients and more than 200,000 transplant recipients in America were counting on us. One hundred thousand people waiting for a kidney transplant were depending on us. And 37 million adults in America affected by kidney disease needed us. Our mission only became more focused.

In a matter of days, COVID-19 changed our plans, our operations, our advocacy, our fundraising, our awareness campaigns, our patient services, our professional development activities, and intensified our sense of urgency. While the rest of the country was shutting doors and staying home, we realized immediately that we were needed more than ever, and we couldn't close shop. We delivered.

As of publication time, just a few months into the worldwide pandemic, we, the leadership at NKF, can say confidently that we are amazed at what our team of volunteers, donors, advocates, and staff have pulled off so far, and it is clear that we are standing on the shoulders of giants. And it is clear that our kidney patients truly need us to see and prepare for what is over the horizon in this new era.

We are grateful for the efforts highlighted in the pages within because this work prepared us for the unseen storm that was coming and equipped us to face one of our community's biggest challenges. If not for the giants through all 70 years of the National Kidney Foundation, it is clear we would not have been able to respond so quickly to the plague that has so unfairly attacking our community.

Most of what you read about within these pages will focus on the work of our present-day giants at NKF, who toil day in and day out on research, education, advocacy, programs, awareness, and innovation.

We are continually grateful for the committed support of our generous donors and volunteers, who have joined our fight to lessen the burden for patients, increase transplantations, educate the public and healthcare professionals, and stop the progression of this powerful disease.

Sincerely,

John Gerzema, NKF Chair of the Board

Holly Kramer, MD, MPH, NKF President

Kevin Longino, NKF Chief Executive Officer

“

“The people in the next generation will remember those at NKF now as fundamental in the discoveries of the future.”

John Gerzema, NKF Chair of the Board



INTRODUCING THE NKF BOARD

Year after year, each class of the NKF Board of Directors has served with a personal connection to kidney disease.

Manish Agarwal, President and COO

Attain LLC, McLean, VA

Personal connection: Mr. Agarwal is a transplant recipient and is passionate about kidney health, and actively serves NKF Serving the National Capital Area as Chair of the Board.

Anne Barr, President and Co-Founder

Counterpoint Advisors Network, SF Bay Area, CA

Personal connection: Her engagement with NKF began as part of her passion for kidney transplantation and when a close friend became a kidney donor.

Thomas P. Cassese, Vice President

Hydroflow Barnes

International, Inc., Chapin, SC

Personal connection: Mr. Cassese has served on the local NKF Serving the Carolinas—South Carolina Board since 1988, and on the National Board since 2014. More than 20 years ago, he was approached by a close friend with CKD to help fundraise for NKF.

Michael J. Choi, MD, FNKF,

Chief of Nephrology and Hypertension Georgetown University Medical Center, Washington, D.C.

Personal connection: Dr. Choi's uncle is on dialysis and his father-in-law is a kidney transplant recipient.

Matthew Cooper, MD,

Director Kidney and Pancreas

Transplantation, MedStar Georgetown Transplant Institute; Professor of Surgery, Georgetown University School of Medicine, Washington, D.C.

Personal connection: Dr. Cooper's work with NKF is centered on improving the lives of people with CKD and supporting the need for organ transplantation for those with kidney failure.

Joseph Cosgrove,

Chairman, President and CEO

Pentec Health, Inc., Boothwyn, PA

Personal connection: Mr. Cosgrove's mother-in-law and his best friend have CKD.

Jennifer DaSilva, President

Berlin Cameron, New York

Personal connection: Ms. DaSilva knows that awareness is just part of the battle against the progression of kidney disease, so she is driven in her efforts to help spread NKF's messages.

John Gerzema, NKF Chair

CEO

Harris Insights & Analytics, New York

Personal connection: Mr. Gerzema experienced kidney damage as a child.

Tom Hough, Financial Consultant,
Board Member

Bain Capital Specialty Finance, Plano, TX

Personal connection: His daughter received her first diagnosis of kidney stones at age 9. He joined the local NKF board to learn more about kidney disease and to help others deal with kidney disease.

Kailesh Karavadra, Managing Partner

Ernst & Young LLP, Pleasanton, CA

Personal connection: His mother was a living donor for her sister, who ultimately lost her life to kidney disease.

Holly Kramer, MD, MPH, NKF President

Loyola University Medical Center,

Maywood, IL

Personal connection: She is a second-generation kidney healthcare professional, dedicating her life to improving outcomes for people with this disease.

Kevin Longino, CEO

National Kidney Foundation, New York

Personal connection: He is a kidney transplant recipient, and son and grandson of kidney patients.

Samuel J. Marchio, NKF Secretary,

Regional Vice President Federal

Government Relations, Head of

Congressional Affairs

Anthem, Inc., Washington, D.C.

Personal connection: He is passionate about kidney health, public health, and fundraising.

Tracy McKibben, Founder and CEO

MAC Energy Advisors, LLC, New York

Personal connection: McKibben donated a kidney to her mother, who was on dialysis for several years.

Paul M. Palevsky, MD,

NKF President-Elect,

Professor of Medicine

University of Pittsburgh School of Medicine Chief Renal Section, VA Pittsburgh Healthcare System

Personal connection: Dr. Palevsky has devoted his career to kidney health and is an international expert in acute kidney injury and critical care nephrology.

Art Pasquarella, CRE, EVP and COO

Equus Capital Partners, Ltd., Philadelphia

Personal connection: He is a living donor, and two of his immediate family members have received kidney transplants.

Stephen Pastan, MD

Associate Professor of Medicine Division of Transplantation, Medical Director Kidney and Pancreas Transplant Program, Emory University School of Medicine, Atlanta

Personal connection: He chose nephrology as a career because of the long-term close relationships nephrologists form with their patients.

Michael J. Stevenson, CPA, Director

Blue & Co., LLC, Columbus, OH

Personal connection: After receiving his diagnosis of glomerulonephritis, Mr. Stevenson received a kidney from his brother, Jim, in 1996, and has been a champion of trying to raise awareness about CKD and ultimately trying to find a cure.

Stephanie Stewart, MSW, LICSW, MBA,

Operations Administrator

Mayo Clinic Health System, Mankato, MN

Personal connection: Ms. Stewart cares about improving the lives of people with CKD. Many of the individuals, mostly patients with whom she has worked, have touched her life in very personal ways.

Anthony Tuggle, NKF Chair-Elect,

Vice President of Sales

AT&T Entertainment Group, Atlanta

Personal connection: A 20-year kidney transplant recipient, Mr. Tuggle is committed to working with NKF towards kidney disease prevention efforts.

Bradley A. Warady, MD,

Division Director Pediatric Nephrology,

Director Dialysis and Transplantation

Children's Mercy Hospital, Kansas City, MO

Personal connection: Dr. Warady has taken advantage of his opportunity as an NKF board member to do what he has done throughout his career: advocate for children affected by kidney disease.

“

“The taller the giants in nephrology stand today, the better view for the trailblazers in nephrology tomorrow, and the better for our patients overall.”

Holly Kramer, MD, MPH, NKF President

Center, Holly Kramer, MD,
MPH, NKF President





“

“Kidney patients are facing great challenges in these troubling times and NKF must rise to meet their needs. 37 million people are counting on us.”

Kevin Longino, NKF Chief Executive Officer
and kidney recipient

NATIONAL STAFF

Kevin Longino

Chief Executive Officer

Petros A. Gregoriou, CPA

Chief Financial Officer

Dolores Machuca-Ruiz

Chief Marketing Officer

Joseph Vassalotti, MD

Chief Medical Officer

Kerry K. Willis, PhD

Chief Scientific Officer

Anthony S. Gucciardo

Senior Vice President
Strategic Partnerships

Jessica Joseph, MBA

Senior Vice President
Scientific Operations

Sharon Pearce

Senior Vice President
Government Relations

**Jennifer St. Clair Russell,
PhD, MEd, MCHES**

Senior Vice President
Education and Programs

Maureen Stone

Senior Vice President
Development

Denise Andersen

Regional Vice President
Northeast

Brenita Brooks

Regional Vice President
Mid-Atlantic

Chad Iseman

Regional Vice President
Central and Pacific Northwest

Susan Ketron, CFRE

Regional Vice President
Resource Development

Jennifer Ching

Vice President
Human Resources

Stephanie Cogan

Vice President
Corporate Relations

Kelli Collins, MSW

Vice President
Patient Engagement

James Echikson

Vice President
Corporate Development

Andrew Gordon, CPA

Vice President
Finance and Controller

Julie Kimbrough

Vice President
Marketing &
Communications,
and Public Affairs

Jacob Lane

Vice President
Information Technology

Katarina E. Madej

Vice President
Digital Marketing

Jennifer Martin


Vice President
Program Development

Elizabeth Montgomery

Vice President
Learning Strategies and Primary
Care Programs

Troy Zimmerman

Vice President
Government Relations



NKF Chief Medical Officer
Dr. Joseph Vassalotti

KIDNEY DISEASE AT A GLANCE



1 IN 3 adults in the U.S. are at risk of CKD

37 MILLION
adults in the U.S. have CKD

35% of all
patients treated
with dialysis are
African American

Source: U.S. Renal Data System

AFRICAN AMERICANS
suffer from kidney failure almost 4 times more
than White Americans

**HISPANICS ARE 1.3
TIMES MORE LIKELY**
to develop kidney failure than non-Hispanics

KIDNEY DISEASE BY THE NUMBERS

About
100,000
people
on the waitlist for a
kidney donation

Source: UNOS



23,401
people

received a kidney
transplant in 2019

Source: UNOS

6,867
people

received a living-donor
kidney in 2019

Source: OPTN/HRSA



12
people

die each day while waiting
for a kidney transplant

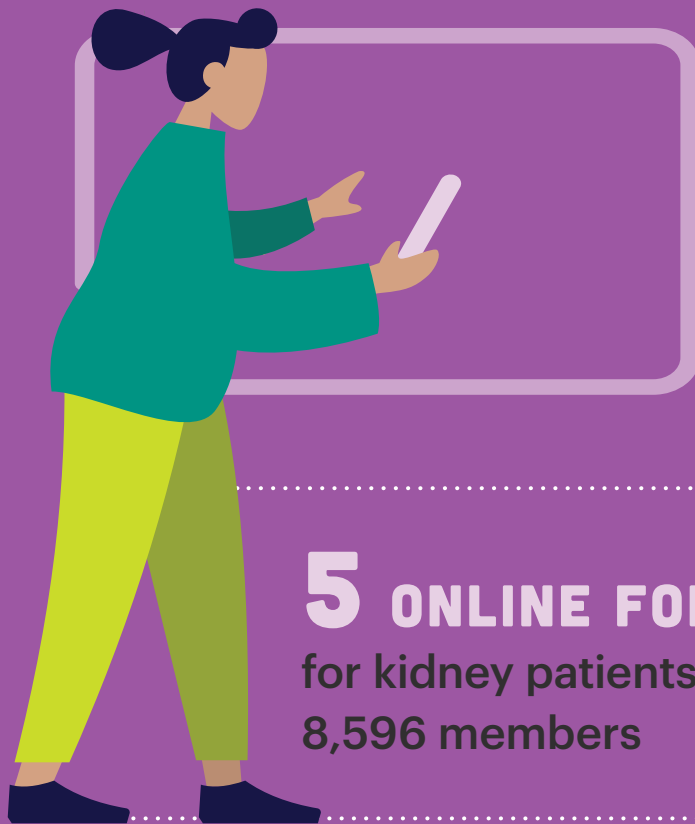
Source: UNOS

58.9%
of all organ
transplants were
kidneys in 2019

Source: U.S. Department of Health and
Human Services



NKF STATS AT A GLANCE



40 IN-PERSON TRAININGS
of THE BIG ASK: THE BIG GIVE held in
20 States in FY20

5 ONLINE FORUMS
for kidney patients with
8,596 members

105 ADVOCATES
representing 43 states attend 2019
Kidney Patient Summit in Washington, D.C.

98 LEGISLATORS
co-sponsor Living Donor
Protection Act of 2019

62 LEGISLATORS CO-SPONSOR
immunosuppressive drug coverage for
kidney transplant patients

KIDNEY.ORG BY THE NUMBERS:

20.5
million

users on
kidney.org in FY20

37.7
million

page views on
kidney.org in FY20



33.8
million

unique page views
kidney.org in FY20

TOP 3 PAGES ON KIDNEY.ORG:

1. 10 Signs You May Have Kidney Disease
2. GFR Calculator Tool
3. Estimated Glomerular Filtration Rate

28,000

clinicians educated
by continuing
education activities

130

CME/CE activities
in FY20

4,800

professional members

18,160

active
NKF patient
advocates



4.2
billion

media impressions of
NKF content in FY20

8.9
million

Facebook impressions
of NKF content in FY20

247,819 Facebook followers

33,994 Twitter followers

27,796 Instagram followers

17,100 YouTube subscribers

16,361 LinkedIn subscribers

\$60.5
million

raised for NKF efforts

5.6
million

Twitter impressions
of NKF content
in FY20



ADVANCING KIDNEY TRANSPLANTATION



WHAT'S NEW:

- When it became clear that COVID-19 was spreading through the U.S. at an alarming rate, **NKF asked for and received a public clarification by the U.S. Department of Health and Human Services** that kidney health surgeries, such as transplants and vascular access, are still “essential surgeries” that should not be delayed. Without this clarification, the organizations responsible for procuring and transporting deceased donor organs to transplant centers may not have been able to do their work, or even go into hospitals to conduct organ recovery surgery.
- After months of collaboration and, frankly, decades of work for kidney patients, we saw many of our fundamental goals realized with the White House’s **Advancing American Kidney Health (AAKH)** initiative, in July 2019. The new initiative will help increase transplants, save kidneys removed for transplant from being wasted, and help make it easier for potential living donors who have made the lifesaving choice to give an organ. It will increase earlier detection and earlier care

of kidney disease. Also, the AAKH increases incentives to develop new and cutting-edge treatments for kidney disease. And one of the most significant aspects of the initiative will advance home dialysis. The Administration’s plan includes five alternate payment models for coverage of kidney disease treatments, including incentives for transplantation and slowing progression of kidney disease, home dialysis, and earlier care of kidney patients; expanded financial assistance to living donors to cover lost wages, and dependent care during donation and recovery; new measures for organ procurement organizations (OPOs) to help increase transplantation; efforts to reduce the number of kidneys discarded, efforts to advance the development of an artificial kidney; and a public awareness campaign to reach the at-risk population and also help increase living-donor organ donation.

- **Working to increase transplants from living donors:** We continue to develop THE BIG ASK: THE BIG GIVE platform and in FY20, held 40 in-person trainings in 20

states. **The BABG training teaches patients and their families about living kidney donation** and how to engage their communities in the search for donors. This program is helping to increase the number of living donors, a critical component in raising the number of transplants.

- At the **NKF 2019 Spring Clinical Meetings in Boston**, we showcased a study titled “Predicting Deceased

Donor Kidney Transplant Outcomes: Comparing KDRI/KDPI with Machine Learning,” which showed that artificial intelligence employed in kidney allocation decisions can result in better patient outcomes.

- The Organ Procurement and Transplantation Network (OPTN) announced the launch of the Kidney Accelerated Placement Project (KAPP) to assess whether

“

“After the surgery, I was asked if I wanted to meet the person. Of course I did. His daughter walked in and just hugged me and wouldn’t let go. Whatever sacrifice I made was small and it was worth it.”

.....

James Doti, PhD, living donor

accelerating the placement of extremely hard-to-place kidneys via the organ center can increase their utilization. This significant step is derived from recommendations outlined in a report by the National Kidney Foundation and published in the journal *Clinical Transplantation*, *The Journal of Clinical and Translational Research*, titled the ["Report of National Kidney Foundation Consensus Conference to Decrease Kidney Discards"](#) in October, 2018.

- NKF worked with the Centers for Medicare and Medicaid Services (CMS) on the initial development of their Transplant Learning Collaborative by providing input about the process and topics to be addressed and connecting CMS with patients and transplant professionals to help guide the work.
- The *American Journal of Kidney Diseases* (AJKD) published the ["KDOQI Commentary on KDIGO Clinical Practice Guideline on the Evaluation and Care of Living Kidney Donors,"](#) which reviews the most recent guidelines published by the global nonprofit for kidney health. The National Kidney

Foundation's evidence-based guidelines development program, the Kidney Disease Outcomes Quality Initiative (KDOQI), published a U.S. commentary on those guidelines.

- NKF worked closely with the Administration and Congress to expand the financial resources available to living donors at the National Living Donor Assistance Center to include reimbursing lost wages for donors who take time off from their jobs for donation and recovery and for childcare and eldercare expenses. We advocated for these under our ["A Path Forward for Increasing Kidney Transplantation"](#)

[plan. These changes will help ensure living donors are made financially whole after giving the gift of life.](#)



FOCUS ON PATIENTS

View NKF Chief Medical Officer, Dr. Joseph Vassalotti as he hosts a Facebook Live event for patients.

WHAT'S NEW:

- COVID-19 came at kidney patients from all sides.** Kidney patients are among the people with the highest risk of serious illness if they contract the virus. While kidney patients are being encouraged to stay home and avoid crowds as much as possible, those treated with in-center hemodialysis must also continue their scheduled dialysis clinic treatments. NKF advocated quickly for removal of policies and regulations that prevented safely moving patients from in-center to at-home dialysis treatments, and we urged Congress to act quickly. Further, we added regular Facebook Live and virtual events with our medical leadership to answer patients' real-time questions about living with kidney disease during the pandemic. We continue to add content to guide patients and kidney professionals safely through the pandemic, such as a curated site devoted to "what you should know" about COVID-19, the new *NKF Clinical Digest — COVID-19*, which helps professionals stay relevant with all the latest news about treating kidney patients in the age of the pandemic, and a series of videos on shelf-stable foods and the recipes to cook them, just to name a few. As the pandemic continues, NKF will continue to add patient services to help them address their daily problems.
- We partnered again with the American Society of Nephrology and the U.S. Department of Health and Human Services on the KidneyX Patient Innovator Challenge, funded by NKF. It was a **competition that invited everyday people to submit ideas and "life hacks"** to improve daily life for patients with kidney disease. The winners of these awards, which include grant money to develop their ideas, were announced at our **live-virtual 2020 Spring Clinical Meetings** and chronicled in quick smart-phone videos.
- Our online forums **that gather patients, families, caregivers, and kidney donors** together to support each other **have doubled in membership** over last year. This is a big win for patients and families who should always know that they are not in this fight alone.



KIDNEY HEALTH AWARENESS FOR ALL



View NKF spokesman
Wilmar Valderama's
Spanish PSA.

IN FY20, the U.S. Centers for Disease Control and Prevention announced that 37 million adults in America are affected by kidney disease, but 90 percent of them don't know it. This makes our job to raise awareness critical. We won't stop sounding the alarm until everyone with this serious disease knows they have it and what to do next.

WHAT'S NEW:

- Our relationship with the U.S. Department of Health and Human Services (HHS) has grown over several years and developed **into a collaboration with HHS and American Society of Nephrology (ASN)** on the public awareness campaign for Advancing American Kidney Health initiative. We began 2020 unveiling components of this important campaign designed to reach the 33 percent of adults in America at risk for developing kidney disease. The joint press release about this partnership had 68 million media impressions.
- Leading up to World Kidney Day observances, NKF kicked off National Kidney Month on March 1 by launching "Are You the 33%?"—NKF's newest public awareness campaign which **focuses on the 33 percent of adults in the U.S. at risk** for developing dangerous, life-threatening kidney disease. Midway through the month, we paused the campaign due to COVID-19 but will restart it in September 2020 to coincide with National Hispanic Heritage Month. Before the campaign hit pause, we had some impressive success. Traditional media impressions during the truncated campaign were more than 138 million.
- On March 12, **World Kidney Day**, NKF asked people to observe the occasion by dedicating one minute to take the Kidney Risk Quiz. **The quiz let responders know if they are one of the 1 in 3 adults** at risk for developing kidney disease and what to do next. We had more than **17,400 people take the Kidney Risk Quiz** with a 20 percent conversion rate during its truncated launch, a higher than expected result. Our celebrity spokesperson's Instagram post for World Kidney Day generated more than 39,000 views and was "liked" by Francia Raisa, the actress who donated her kidney to Selena Gomez. World Kidney Day was the highest conversion day with about 3,000 quiz submissions.
- **NKF and CVS Kidney Care, a CVS Health company, joined forces** on a national campaign to raise awareness in March about kidney disease. CVS promoted the NKF Kidney Risk Quiz and had planned to launch an educational site about kidney health. The joint press release about the collaboration had 61 million media impressions.
- NKF engaged **actor, activist, entrepreneur Wilmer Valderrama** to spread the word to the 1 in 3 adults at risk for kidney disease in the nationwide public awareness campaign launched during National Kidney Month. An NKF-written article about this partnership reached 600,000 print media readers and more than 68 million unique visitors online.
- Just in time for 2020's New Year's resolutions, a fresh survey commissioned by the National Kidney Foundation showed that **patients with at least one of the five risk factors for kidney disease want more information** and are willing

“

Everyone needs to learn about kidney health. It affects more people than breast cancer or prostate cancer. My family and I are taking this disease seriously. I took the kidney quiz to find out my risk for kidney disease and you should too.”

.....

Actor, activist, and entrepreneur
Wilmer Valderrama

to make behavioral changes when they know what to do. The survey conducted in December by Kantar, a global data company, found that Americans in general are not talking to their doctors much about kidney disease, though most respondents who had at least one of the factors did know about the elevated risk.

- **In NKF's efforts to discover knowledge gaps** we also commissioned [The Harris Poll to conduct a survey](#) of adults about diabetes and the risk of kidney disease for patients with type 1 or type 2. It turned out that too many adults, 46 percent of those polled, don't know that those with diabetes are at increased risk of kidney failure and we need to change that. Millions of Americans have diabetes, so it is imperative that we make sure they know the risk of kidney disease.
- CBS television provided NKF with a unique opportunity to raise awareness about living donor kidney transplantation among their daytime drama audience with the [storyline in The Bold and The Beautiful](#). **The show's writers worked with us on the script** and a [PSA](#) aired after the episodes about living kidney donation and kidney disease.

- Los Angeles-based Sonix, maker of popular and stylish tech accessories sold across the globe, **joined forces with the National Kidney Foundation for a consumer awareness and fundraising campaign, Sonix X NKF**. The purpose: To bring more attention to the overall importance of kidney health and renewed focus to the urgent need for increasing the number of living kidney donors.
- The National Kidney Foundation made it easy to help people understand how to take control of gout with **a free, online tool about gout**, which is a serious type of arthritis caused by a buildup of uric acid crystals in joints.
- FLAVIS, the kidney friendly food brand, and the **National Kidney Foundation partnered to promote medical nutrition therapy** to help maintain residual kidney function among kidney disease.
- To help usher in **National Donate Life Month in April 2019**, which is observed to spotlight the need for organ donation across the country, **11-year-old shining star and singer Angelica Hale hosted an exclusive, live, online fundraiser** in support of the National Kidney Foundation. Angelica is best known for her stellar performances on *America's Got Talent!* Angelica is the first-ever NKF Kid Ambassador and a kidney transplant recipient who utilized her fame and her [very own YouTube account](#) – which has more than a million subscribers – to go live directly from her Atlanta home for the cause.

Actor, activist, and entrepreneur
Wilmer Valderrama

MAKING LIVES BETTER RESEARCH



WITHOUT NKF's annual support of research and professional education over the last 70 years, many innovations would never have been developed. Here are just some of the ways that NKF supported research in FY20:

WHAT'S NEW:

- Diagnosis of kidney disease followed by risk-stratification matched interventions improves outcomes for adults in the U.S. living with kidney diseases. We published the findings of a landmark study conducted by the National Kidney Foundation and CareFirst BlueCross BlueShield (CareFirst) that found that **detecting CKD with two simple tests and treating it based on severity can improve health outcomes** for patients with diabetes and hypertension and **lower the cost of caring** for them. Conducted on more than 7,000 patients in CareFirst's Patient-Centered Medical Home (PCMH) program from July 2015 to July 2017, the study helped primary care physicians save thousands of dollars per year per patient on certain healthcare costs.
- In August 2019, *AJKD* published an article summarizing the deliberations and recommendations from a scientific workshop that was a joint effort of NKF, the U.S. Food and Drug Administration (FDA) and the European Medicines Agency (EMA). The report, titled "Change in Albuminuria and GFR as End Points for Clinical Trials in Early Stages of Chronic Kidney Disease" is the **culmination of an ambitious multi-year project to evaluate whether change in the slope of eGFR decline and albuminuria are valid endpoints to evaluate efficacy of new treatments for kidney disease.** These new endpoints are already being used in clinical trials of potential therapies for kidney diseases that would otherwise not have been possible.
- Since 1997, NKF's Kidney Disease Outcomes Quality Initiative (KDOQI) team has been reviewing clinical practices and creating guidelines and commentaries. In FY20, they found that **accurate blood pressure readings** are only as good as the techniques used to take the measurement. Effective and sustained blood pressure control is an important tool for preventing or delaying the progression of kidney disease, and earlier approaches to measuring blood pressure often resulted in flawed readings and insufficient treatment. This KDOQI commentary provided practical advice on how to achieve accurate blood pressure readings for every patient at every visit.
- Nearly 80 nephrologists, cardiologists, diabetologists, patients and policy makers gathered in Chicago in June 2019 **hosted by NKF to share information about a human protein** called sodium-glucose cotransporter-2 (SGLT2), its role in diabetic kidney disease and how a new drug class called SGLT2 inhibitors can help. These experts deliberated on the current state-of-knowledge, methods to improve clinical care, and research that is needed to advance the field. The primary objective was to develop effective implementation strategies to promote appropriate use of these new medications to improve kidney disease and CVD outcomes for people with type 2 diabetes, with the first step being a series of peer-reviewed publications reporting on the meeting deliberations that will appear in *Diabetes*, *Journal of the American Pharmacists Association*, *Journal of Family Practice* and *American Journal of Kidney Diseases*.
- The *Journal of General Internal Medicine* published a new National Kidney Foundation study describing key **challenges in primary care physicians and nephrologists working together** to care for patients with kidney disease. The investigators found that primary care physicians had difficulty developing working partnerships with nephrologists, because there was not timely information exchanged about their shared patients; their roles and responsibilities were unclear; and primary care physicians had limited access to nephrologists for advice. Strategies to overcome care coordination barriers will improve primary and kidney specialty care for people living with kidney diseases.

YOUNG INVESTIGATORS AWARDS

The 2020 Research Grant Recipients of the NKF Young Investigator Awards

For years, the National Kidney Foundations (NKF) has believed that some of the best ideas come from some of the youngest scientists just beginning their careers and has supported these brilliant people annually with monetary grants to give them a leg up in finding solutions that can help kidney patients. In FY20, NKF gave five scientists grants to advance knowledge about treatment and prevention of kidney disease and kidney failure. The Award winners were:

- **Vishnu Potluri**, University of Pennsylvania, Philadelphia
 - **Laith Al-Rabadi**, University of Utah Hospital, Salt Lake City
 - **Cristian Riella**, Beth Israel Deaconess Medical Center, Boston
 - **Jaya Kala**, University of Texas Science Center at Houston, Houston
 - **Manisha Singh**, University of Arkansas for Medical Sciences, Little Rock
-
- Potluri will study "Forecasting Deceased Donor Kidney Allograft Survival Using Machine Learning." Thousands of people donate their kidneys each year in the United States to help patients with kidney disease: **Unfortunately, nearly 20 percent of all kidneys recovered from donors after death are never transplanted.** Leading kidney organizations in the United States, including the National Kidney Foundation, have prioritized reducing the number of unused, deceased-donor kidneys as one of their goals. This project will utilize tools such as machine learning to improve predicting kidney function after transplantation. The results could lead to more transplantation of kidneys that had previously been rejected due to concerns about quality.
 - **Al-Rabadi will study Alport syndrome** (AS) in the study called "Utah Kindred P Revisited." AS is the **second most common cause of inherited kidney failure.** It is characterized by progressive loss of kidney function, hearing deficits, and ocular abnormalities. X-Linked Alport Syndrome (XLAS) is clinically and genetically heterogeneous. Distinguishing between mild cases and those that rapidly progress to kidney failure is difficult, but it is critical for optimal clinical management. The goal is to apply the methods and data from a pilot study on a larger scale to validate the findings and continue to identify potential modifying genes and pathogenic pathways that may help describe clinical variability in phenotype expression. Identifying such factors could pave the way for new therapeutic approaches.
 - Riella will study "The Role of RNA Editing in Apolipoprotein L-1 Regulation." Blacks or **African Americans are four times more likely to develop kidney disease than White Americans.** This disparity is explained in part by mutations in the apolipoprotein L-1 (APOL1) gene. The mutations have been found only in African Americans and increase the risk of kidney disease by up to 30 times. There is currently a gap in knowledge in how this gene is expressed in the body. In Riella's preliminary work, Riella discovered a new mechanism of APOL1 control, which determines how much APOL1 protein is produced. Understanding this mechanism has the potential to identify new targets for future drug development. Unveiling how the protein is controlled is one step closer to understanding how it causes kidney disease, a question not yet answered.
 - Kala will study "Isosorbide Mononitrate for Anti-Vascular Endothelial Growth Factor (VEGF) Induced Kidney Injury." Recent advances in cancer chemotherapy have helped dramatically improve the outcome of cancer and overall prognosis. This has allowed the patients to live longer and healthier

lives. However, side effects of chemotherapy remain a major challenge. This study **may help preserve the patients' kidney function during chemotherapy**, improving its effectiveness.

- Singh will study "Identifying Barriers and Impacting Care in Chronic Kidney Disease Awareness." Of about 450,000 Arkansans with chronic kidney disease (CKD), only 10 percent are aware that they have it. Primary-care physicians (PCPs) are powerful partners in protecting kidney function and slowing CKD progression since they encounter patients early in the course of CKD. In this study, Singh **will assess the ability of checklists to create short and long-term knowledge gains in PCPs.** Singh will also explore barriers that prevent optimized CKD care, including nephrology referrals. A 10-step checklist of CKD guidelines will be used to support PCP awareness and provide an outline for care. This study is one facet of the overall goal to improve CKD awareness in Arkansas. The results of this study will inform the development of further study addressing an interactive CKD checklist to improve outpatient CKD care.

CHANGING LAWS AND INFLUENCING MINDS

THE voices of the many continue to make the biggest impact on our nation's policies that affect kidney patients. We've been making a difference in public policy since NKF began at our founder's kitchen table in 1950. Here are the highlights from FY20:

WHAT'S NEW:

- We played a pivotal role when one of the most significant initiatives for kidney health came in July with the Advancing American Kidney Health (AAKH) initiative. With one stroke of the pen, many of our most important goals became the policy of this nation. We worked closely with U.S. Department of Health and Human Services (HHS) Secretary Alex M. Azar II on the goals and architecture of the AAKH and the executive order was the product of that work. The detailed AAKH plan places emphasis on the prevention of kidney disease, increasing transplantation, and increasing home dialysis and cutting-edge innovation in new therapies, including the artificial kidney. The ripple effects of this sweeping action should flow for years to come.
- The National Kidney Foundation's Board of Directors member Dr. Matthew Cooper testified on Jan. 8, 2020, before the U.S. House Energy and Commerce Health Subcommittee to support H.R. 5534, a bill which would make immunosuppressive drug coverage available to all kidney transplant patients and remove the 36-month limit for Medicare coverage currently in place. The bill had 56 cosponsors as of March 31, 2020. The similar U.S. Senate bill had six bipartisan cosponsors.
- The many voices of patients with IgA nephropathy, a kidney disease, came together in August 2019 during an Externally-Led Patient-Focused Drug Development meeting in Hyattsville, MD. The meeting was organized by the NKF and IgA Nephropathy Foundation of America and was free to participants. Patients with IgA nephropathy and their caregivers had the opportunity at the all-day session to share their disease experience with the U.S. Food and Drug Administration, pharmaceutical companies interested in developing drugs for the disease, doctors, and researchers who are experts in the disease, and other stakeholders.
- In July, the Organ Procurement and Transplantation Network (OPTN) announced the launch of the Kidney Accelerated Placement Project (KAPP) to assess whether accelerating the placement of extremely hard-to-place kidneys via the organ center can increase their utilization. This significant step is derived from recommendations outlined in a report by the National Kidney Foundation and published in the journal *Clinical Transplantation*, *The Journal of Clinical and Translational Research*, the "Report of National Kidney Foundation Consensus Conference to Decrease Kidney Discards" in October 2018. The report focused on decreasing the number of kidneys discarded and provided the first systematic nationwide approach to reducing kidney discards and increasing the number of transplants.
- NKF's patient and practitioner advocates and local office staff successfully introduced and/or advocated for the passage of nine state versions of the Living Donor Protection Act. They also supported the passage of other state legislation on paid leave for private and state employees, and kidney disease awareness in several other states.
- When COVID-19 struck the United States and grabbed the attention of the healthcare industry in the final month of our fiscal year, we jumped into action and began our all-out effort to stem its devastating effect on kidney patients. When we learned that some hospitals no longer saw transplants as essential surgeries, we convinced HHS to issue guidance that transplants should not be postponed. At the close of the fiscal year, NKF was just getting started on the important work before us to influence policy makers in Washington, and states and local jurisdictions to enact laws that will protect kidney patients, aid professionals who are

facing enormous challenges, and society at large as the pandemic has highlighted the inequities that are harming not just kidney patients, but all Americans.

“

“A system that effectively promotes kidney health will put patients at the center and in control and recognizes that sometimes the best solutions to complex problems lie with the very people we need to help.”

.....

U.S. Health and Human Services
Secretary Alex M. Azar II

AIDING THE PROFESSIONALS

NKF recognizes that healthcare professionals are on the front line of the battle against kidney disease and they need all the support they can get. Here are just some of the activities NKF provided for our nation's healthcare heroes in FY20:

WHAT'S NEW:

- This fiscal year, both the 2019 NKF Spring Clinical Meetings and the 2020 NKF Spring Clinical Meetings fell in FY20. The first was held in May 2019 in Boston and the second was held in March 2020 and became our first, live-virtual event due to COVID-19. Our live-virtual event required an entire course change in just a matter of weeks, which included learning new technology not just for the participants, but for the leaders and organizers, as well. Our team was able to provide a rich experience for participants that resulted in an 11 percent increase in attendance. Our team was able to make the transition, quickly and effectively, for kidney professionals, which ultimately raises the quality of care our kidney patients receive.

Here are some of the highlights for both meetings:

- "Apabetalone Reduces Cardiovascular Events in Patients with Chronic Kidney Disease, Type 2 Diabetes, and Recent Acute Coronary Syndrome: A BETonMACE Trial Report" was presented at

NKF's first live-virtual Spring Clinical Meetings in March 2020 and found that patients with acute coronary syndrome (ACS) and type 2 diabetes (T2D) have a very high risk of subsequent major adverse cardiovascular events or hospitalization. This risk is further augmented by chronic kidney disease (CKD). In patients with CKD, expanded MACE occurred in 12.9 percent on APB and 25 percent on placebo (HR 0.48, 95% CI 0.26-0.89 (p= 0.02)).

- Also presented virtually was the study "Efficacy and Safety of Oral Difelikefalin in Stage 3-5 Chronic Kidney Disease Patients with Moderate-to-Severe Pruritus: a Response Analysis from a Randomized, Placebo-Controlled, Phase 2 Trial" which looked at pruritus, a common and burdensome condition in non-dialysis and hemodialysis patients with kidney disease, for which there are no approved treatments. Difelikefalin (DFK) is a novel peripherally restricted, selective kappa opioid receptor agonist being developed for the treatment of

pruritus. The study found oral DFK 1.0 mg daily was the optimal dose based on significant reduction in itch intensity and an acceptable safety profile. Further evaluation of DFK is warranted in kidney patients with pruritus, where there is a high unmet need.

- "Evaluation of Payer Budget Impact Associated with the Use of Artificial Intelligence in vitro Diagnostic, KidneyIntelX, to Modify DKD Progression" was presented at the 2020 NKF Spring Clinical Meetings studied diabetic kidney disease (DKD), which affects more than 12 million patients in the U.S. Established laboratory tools fail to identify 50 percent of DKD patients who will have rapid kidney function decline and kidney failure. KidneyIntelX, a biomarker-enriched, clinical feature machine learning test can predict rapid kidney function decline and kidney failure in DKD stages 1-3b, allowing these highest-risk patients to be promptly and optimally treated to reduce disease progression. The study found that projected base case 5-year

savings for 10,000 patients using KidneyIntelX are \$115 million; range \$83 million-\$130 million, most stringent and least stringent definitions, respectively.

- NKF showcased at the 2020 Spring Clinical Meetings a global study designed to understand the experimental immunosuppressant drug voclosporin as a treatment for patients with lupus kidney disease. The important study, "AURORA Phase 3 Trial Demonstrates Voclosporin Statistical Superiority Over Standard of Care in Lupus Nephritis (LN)", was selected as a late-breaking poster presentation chosen from among hundreds of other discoveries presented at the NKF Spring Clinical Meetings. Aurora is a global study designed to help us understand if adding voclosporin to mycophenolate mofetil and steroids, common treatments for lupus kidney disease, will improve outcomes in patients with active lupus kidney disease. Voclosporin is being developed by Aurinia Pharmaceuticals.

- “Effects of Veverimer on Serum Bicarbonate and Physical Function in Patients with Diabetes and Chronic Kidney Disease: Subgroup Analysis from a Randomized Trial” was presented at the 2020 NKF Spring Clinical Meetings. Metabolic acidosis is common in patients with kidney disease, is harmful, and needs to be treated, according to the authors of the study. The study will help add to the available strategies to treat metabolic acidosis in patients with kidney disease and alleviate its harmful effects.
- Exercise for older patients with kidney disease is not only safe, but can improve their overall physical fitness, investigators found and presented at the 2019 Spring Clinical Meetings. The investigators evaluated the impact of an exercise intervention in community-dwelling adults with kidney disease.
- Also presented at the 2019 NKF Spring Clinical Meetings, were the results of a new study that offers hope to a subset of patients with advanced kidney disease whose hypertension is difficult to treat, requiring multiple medications, and who are at risk for a potentially dangerous condition called “hyperkalemia” or elevated blood potassium. The study was titled “Patiromer to Enable

Spironolactone in Patients with Resistant Hypertension and CKD: Primary Results of AMBER.”

- Another study presented in Boston showed that the medical data of tens of thousands of diabetic patients has found many have undiagnosed kidney disease, including the most critical late stages. The study was titled “Prevalence and Factors Associated with Undiagnosed Chronic Kidney Disease in Diabetes Mellitus.”
- At the 2019 NKF Spring Clinical Meetings, a study suggested that socioeconomic factors play a significant role in the increased risk of pregnancy-related acute kidney injury among minority women. The study is titled “Racial Disparities in Pregnancy-Related Acute Kidney Injury.”
- At the 2019 NKF Spring Clinical Meetings, a study presented analyzed 10 years’ worth of data and hundreds of variables about deceased-donor kidneys and the recipients who received them and found that with artificial intelligence (AI)—specifically, training machines to learn from past experience—predictive outcomes are more accurate and will continue to improve over time. Kidneys can then be allocated more efficiently, and with less waste than ever before, according to the author. The study is

titled “Predicting Deceased Donor Kidney Transplant Outcomes: Comparing KDRI/KDPI with Machine Learning.”

- The American Journal of Kidney Diseases published the National Kidney Foundation’s *KDOQI Clinical Practice Guideline for Vascular Access: 2019 Update*, a completely revamped set of 26 individual guidelines for clinicians that focuses on dialysis access choices tailored to individual patients’ goals and preferences, as well as clinical outcomes. It is the third time the Kidney Disease Outcomes Quality Initiative (KDOQI)

team has developed a vascular access guideline and the first time the guideline has been updated since 2006.

- KDOQI also reviewed and released the *KDOQI Commentary on KDIGO Clinical Practice Guide on the Evaluation and Care of Living Kidney Donors*, which reviews the most recent guidelines published by Kidney Disease Improving Global Outcomes.

“

“The best of our healthcare professionals remind us that the patient’s well-being and quality of life must be central in everything we do.”

.....

Dr. Holly Kramer, NKF President

CORPORATE CHAMPION

“

“The National Kidney Foundation applauds Janssen for bringing forth this treatment and urges patients living with type 2 diabetes to discuss the implications of this option with their healthcare provider.”

.....

Kevin Longino, NKF CEO

WHAT'S NEW:

Every year, the National Kidney Foundation steps out to recognize a corporation that is truly making a difference in kidney health. This year, Janssen Pharmaceuticals Inc., part of the Johnson & Johnson companies was selected to receive the 2020 Corporate Innovator Award from NKF as part of the annual [Spring Clinical Meetings](#).

In September 2019, Janssen's INVOKANA® (canagliflozin) was approved by the U.S. Food and Drug Administration (FDA) to reduce the risk of kidney failure, worsening of kidney function, cardiovascular deaths, and hospitalization for heart failure in adults with type 2 diabetes and diabetic kidney disease (DKD) who have a certain amount of protein in the urine.

"[Diabetes](#) is a key risk factor for DKD, and accounts for 44 percent of all kidney failure cases," said Kevin Longino, CEO of NKF and a kidney transplant patient. "However, less than 40 percent of those with diabetes are completely assessed for kidney disease. The [National Kidney Foundation](#) applauds Janssen for bringing forth this treatment and urges

patients living with type 2 diabetes to discuss the possibilities of this treatment with their healthcare provider."

Diabetes and DKD are common and complex disorders, which often coexist, and each are associated with multiple comorbid conditions and higher risk for mortality. SGLT2s are proteins found in the kidneys that are important in the reabsorption of glucose by the kidneys. INVOKANA®, a SGLT2 inhibitor that has been used for glycemic control in people with type 2 diabetes by inhibiting renal reabsorption of glucose, has now been shown to slow the progression of DKD and reduce the risk of hospitalization for heart failure in this population.

[The Corporate Innovator Award](#) was established to recognize industry leaders that advance the field of nephrology by addressing an unmet medical need, or improving upon an existing practice, therapeutic or technology.

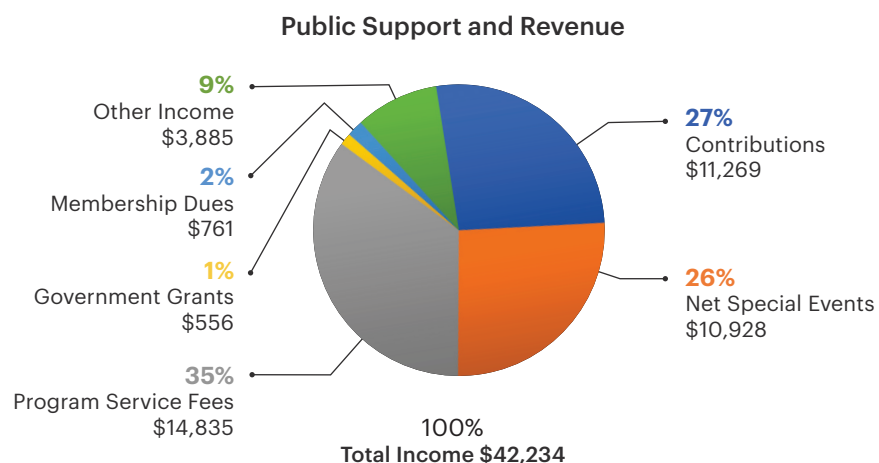


OUR FINANCIAL OVERVIEW

THOUSANDS of people like you around the country have given their time, talents, and treasures all year to raise millions to fund important work led by NKF. After COVID-19 hit the world, our mission became more important and critical than ever before, which is why we are so thankful for our many patrons who have continued to support kidney patients.

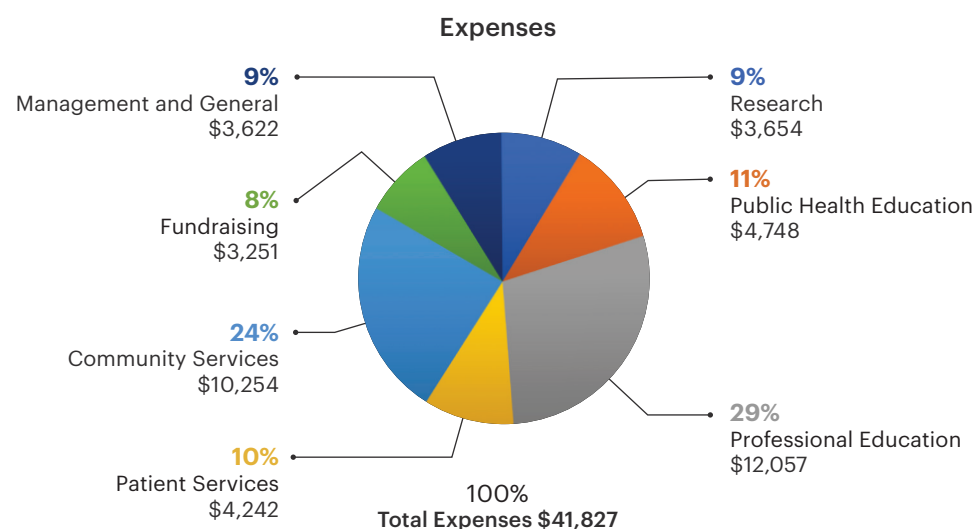
AUDITED FINANCIALS FOR NKF WITHOUT AFFILIATES — FY 2020

All figures are in thousands.



Assets

Cash and Cash Equivalents	\$6,243
Investments	\$12,834
Accounts Receivable	\$1,890
Inventories of Educational and Campaign Material	\$96
Prepaid Expenses	\$1,600
Property, Plant and Equipment (net)	\$644
Other Assets	\$3,698
Total Assets	\$27,005



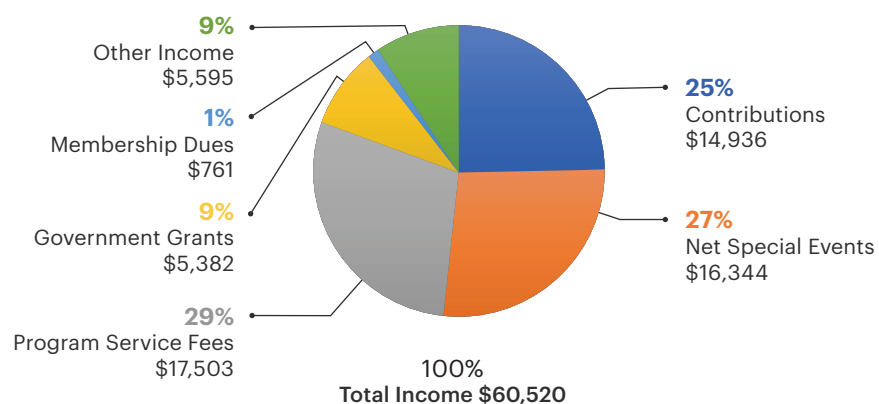
Liabilities and Net Assets

Accounts Payable and Accrued Expenses	\$5,862
Deferred Income	\$8,048
Other Liabilities	\$359
Total Liabilities	\$14,269
Net Assets	
Without donor restrictions	\$6,300
With donor restrictions	\$6,436
Total Liabilities and Net Assets	\$27,005

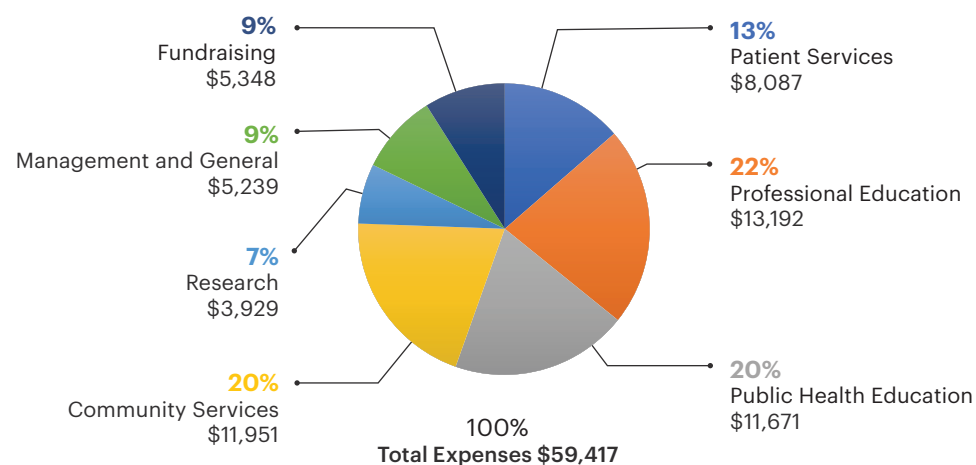
COMBINED FINANCIALS FOR NKF AND AFFILIATES — FY 2020

All figures are in thousands.

Public Support and Revenue



Expenses



82% Total Program Expenses..... \$48,830
18% Total Support Expenses \$10,587

Assets

Cash and Cash Equivalents	\$12,305
Investments	\$28,856
Accounts Receivable	\$4,297
Inventories of Educational and Campaign Material	\$99
Prepaid Expenses	\$1,994
Property, Plant and Equipment (net)	\$5,528
Other Assets	\$4,377
Total Assets	\$57,456

Liabilities and Net Assets

Loans Payable	\$504
Accounts Payable and Accrued Expenses	\$7,713
Deferred Income	\$8,811
Other Liabilities	\$462
Total Liabilities	\$17,490
Net Assets	
Without donor restrictions	\$27,175
With donor restrictions	\$12,791
Total Net Assets	\$39,966
Total Liabilities and Net Assets	\$57,456

INDIVIDUAL SUPPORTERS

\$250,000+

Arthur and Gail Pasquarella*

\$100,000+

Kevin Longino and Mary McDowell*

\$25,000–\$49,999

Bryson DeChambeau

William Dessofoy*

Daniel Doyle

Susan French

Marcia and John Goldman*

Holly and Kurt Kramer*

Roger Penske*

Douglas Pitassi

\$10,000–\$24,999

Rick Barnett*

Matt Barr*

LaJaun Battle

John Beuerlein

David Boyer*

Chuck Columbus and Teresa Brannon*

Jason Brian*

Sandy Coplon*

Chris Driessen

Nancy Dunn*

Susan and David Edelstein

Timothy Field*

John Gerzema*

Lou Grant

Drs. Peter and Bobbie Greenwalt*

Brennan and Maureen Hart*

Jennifer Hilton Hawthorne*

Brad Heinrichs

Gordon J. Heuser

Jeffery Horn

Tom Hough*

Lou Jablonski

Michael W. Sturkie, Jr.

Kathleen Loftin

Samuel Marchio*

Andrea Mascher

Corissa McHugh

Helen Mekal*

Alan and Agnès Mendelson

Michael Mosing

Mr. Joseph Mullen*

Conzen O'Connor

O'Neil Family

Jack O'Neil

Joe and Nicki Parisi

Ty Pell

Dr. Beth Piraino*

Fred and Margaret Podolsky

Joseph Quinn

Lon Rubackin

Fritz Schneider

Thomas Schubert*

Dr. Sumeska Thavarajah*

Anthony Tuggle*

Jill and Bill Valle

Mell Vaughan*

Michael and Tiffanee Watts*

Thomas G. Young

Anthony Westreich and Tanya Zuckerbrot*

Kenneth and Leslie Zuckerbrot

\$5,000–\$9,999

Dima AlFaham

Robert and Judith Aptekar

Cynthia Arevalo

Keith Arnold

Dr. Ahmed Awad*

Mena Ayazi

Bracknell Baker

Kevin Barry

Ben Bedford

Chris Bemis*

Stu Bloch

Marcella Boomer*

Gary Bornstein

Ryan Bradley

Mr. Edwin Brooks*

Amberlee Buckley

Dan Buttke

David Caldwell

James Carlson*

Nirmala Chauhan

Jake and Randi Jo Cheafsky

James Clenny*

Courtney Combe

Mr. Doug Comer*

Virgil Cordero*

Dr. Cindy Corpier*

Brian Corrigan

Ryan D'Imperio

Elliot Dinkin

Catherine Donnelly

Daniel Donnelly

Jack Donnelly*

Daniel Drumheller*

Terrence and Peggy Dunn*

John Charles Espenschade

Eliot Fishman*

Shelia FitzPatrick—FitzPatrick and Assoc.*

Seymour and Renee Flug

Danielle Frechette

Zach Gifford

Gaetano Giordano*

Danny and Sharon Greenfield*

* **Hero Circle supporters:** Hero Circle Members are individuals who invest in the National Kidney Foundation with an annual gift of \$1,000+. These gifts exclusively support our annual fund which provides important, unrestricted resources that help us advance our mission and values.

Lincoln Gutshall

Norma Haigh

Mark Harmeling

David Heller

Michael Hines

Jay Hirsh

Jeff Hubbard

Cindy Huber

Charles Hurchalla*

Garry and Maryn Hurlbut*

Ishmael Jaiyesimi

Greg Janssen

Tracy Jonelis*

Bill Jones*

Kelly Jones*

Suresh G. Kamath

Lauren Kauffman

Adam Kazalski

Tracy and Joe Keogh*

John Kett

James Knight

David Knop

Neville Kotwal

Demetri Kouretas

Heung Hung Lee

Steven J. Lee, MD

Tim Leffler

Martha Lellman

David Lipshutz*

Bill and Donna Litt*

Lawrence Lun

James Maran*

Andrew Marreel

Harvey Masonson*

Anne Barr and Fred Matteson*

Paul Matteucci

Bruce McCollum*

Paul and Carol Meese

Robert Modansky

Jason Nefs

Jean Oliver*

Michael Olson

John Orwin

Bruce Ovbiagele

A. John Pappalardo

Walter Parker*

Barbara and Walter Parkes*

Miranda Paup

Mr. Christopher Perl*

Louis Petrocelli

Matt Pfeil*

Mike Postal

Randi and Michael Potack

James Potoski*

Inova Program

Richard E. Reed

Ms. Robin Reitzes

Jean Rhodes

Brooke Richman*

Richard and Ellen Richman*

James Rousseve

Matt Rowe

Brandon Rowland

Albert and Melissa Royce

Linda Saffir

Ed Salameh

James Scanlon

Kevin Scharnek

Ray and Anne Schrock

Laurie Schuh

Amit Sharma

Kim Skrainka*

Lynn Smirolto*

Sherri Smith

Judith Snyder

Tim Statts*

Mr. Michael Stevenson

Robert Stice

Kalen Stickelman

James Stone

Terry Stricklin

James Strong*

William Talmage*

Mr. Mark Testoni

Tim Tyler

Joseph Ventura

Sheila VonEuer

W. Edward Walter

Deborah and Michael West

Mr. Jon Wilkins*

Williams Family

Dr. Barry and Mrs. Brenda Wood*

Jacqueline Woodford*

Terry Woods

Nick Yuhas

\$1,000–\$4,999

Alfred A.

Dawn Abbuhl

Sheldon Abelson*

Michael Abernathy

Dr. Paul Abraham*

Nancy Abramson

Wilfrano Aburto

Ben Acquario

Larry Acred

Kelly Adams

Sarah Addis

Meredith Adkinson

Amal Agarwal

K.C. Aherns

Nolan and Lindsay Ahlvers

Eugene Andre Ahtirski

Denise Andersen*

Abby Aiello	William Ashmore	Paul Bassett	Joel Blackmer	Heather Brian	Paul Butrim
Mr. Larry Aiello*	Michael Asselta*	John Bates*	Laura Blackmer	Elwood Brice	Tracy Buzbee
M. Louie Akel	Walid Abou Assi	Charles Bates	David Blakely	Doug Brinkley	Magdalena Cabrera*
Mary Alagia	Kimberley Cameron and Associates	Scott Battaglia	Hoyt F. Blaylock	Andrea Britton	Mrs. Anne Cadwell*
Damiano Albanese	Carolyn Atkins	Chris Batterton*	Pierre Blemur	Kristina Broadbelt	Patrick and Molly Cahill
Robin Albert*	Basil Atwood	Nancy Baughman	Chris Blevins	Scott Broadbent	Michael Calabrese
Samantha Alberty	Julie Auster*	Kevin Baum	Mark Blevins	Heather Brockinton	Salvador Calaf
Mike Albrecht	Daren Austin*	Tracy Baynes*	Suzanne Blevins*	Bob Brockmeier*	Alice Calhoun
Douglas Albregts	Tiffany Avila	Chad Beanland	David S. Blitzter	Elizabeth Katherine Broderick	Devon Callaghan
Boyd Aldridge	Charles R. Aydlette, Jr.	Elaine Beaver	Paul Bloomberg	Jenny Brokes	Rita Calvin
Tom Ali	James Baccaro	Elizabeth "Itty" Beck	John Bloomhall*	Paul Brophy	Floyd Anthony Campany
Jeffrey Allard*	Tony Backert	Richard Douglas Beckley	Lynda Blubaugh	Trey Brophy	Rebecca Campos
Herbert R. Allen	Sean Bae	Anahita Behrad	Deanna Rachel Bobiwsky	Rhee Brothers	Lisa Cancro
Joseph Allerhand	Richard Bafford	Barry Beil	Tim Bock	Mr. Michael Brower*	Christopher Cangemi
Lauretta Allington	Alice Baia*	Judy Beil	Edward Boettner	Gordon Brown	Frank Cannata
Mike Allison	Richard Bailey*	Nancy Bell	Michelle Boger	Howard Brown*	Cynthia Cannon
Jason Allmond	Joe Bailey	Gerald Bellis*	Kate Bolio	Paul Brown, Jr.	Thomas Capobianco
Kenneth Newell Almond	Lane Bailly	Parwat Benawa	Iris Bolling	Pauletta Brown	Nail Capri
Mario Alvarez	William Bailey	Mark Bender	Joel Bolstein	Karen Brownlow	Kevin Carbonaro
Christopher Amato	Chuck Bainey	Gregory Bennett	Jolene Boman	Spencer Bruce	Geralyn Carder*
Richard Ambrose*	Anthony Baiocco	James Bennett	Anthony Bonacci	William Bruce	Mike Cardillo
Darvi Amick	Duane Baldish	Tommie Bennett	Kerri Bonner	Ms. Sonia Brummer	Doug Carignan
Dr. A. N. Amin	Frank Balestreri	Jasmin Bennison	Philip Gary Bopp, Jr.	Jeffrey Brunkow	James Carollo
Nelson Amos	Leroy M. Ball	Paul Benson	Patricia R. Borkowski	Robert Bryson	Paul Carollo
Debra Amrhein	Mariclare Dunne Ballard	Nancy Berg*	Jeff Botnen*	Mike Buchanan	Robert Carollo
Joe Anaszewicz	Jaron Balman	Brian Bergeron	Travis Bowles	Sandra Buchanan	Stephen Carollo
Arlene Anderson	Doug and Sue Balog*	Mrs. Gretchen Berlin*	Joanna Bowman	Mary Buffington, MD	Alan Carr
Julie Anderson	Matthew Bame	Todd Bernhardt*	Lanny Bowman	Richard Bullitt	Allison Carr*
Pamela K. Anderson	Katherine Barbaccia	Bonita Berry	Todd Boyd	Doug Burgreen	Michael Carr*
Loren Andreo, Jr.	Anne Barker	Bruce Berry	James Boyer	Cathy Burke*	Shawn Carson
Joy Anes	Beverly Barnes	Sam Berry	Thomas Boyer	Steven Burke	Wanda Carter
Raymond Ao*	Jack Barnes*	David Beyer*	Jane Brady	Trevor Burkholer	William Carter
Roberta Janet Apple	Diane Barnes-Tice	Mark Bezos	Stacey Brady	Richard Burley	Carmen Cartwright
Bruce Arditte	David Barquist	Kevin Billings	Travis and Meagan Brannon*	Gary Burman*	Mike and Cheryl Casamento
Jeremy Armstrong	Diane Barrett*	Roberta Billman	Alecia Branson	Susan Fogle Burnett	Nancy Cascella
Daniel Aronson	Joseph Barron	Marvin Birt	Lester Branson*	Bridget Burns	Jocelyn and Judy Cash
Amanda Arter	Felicia Barrow	Patrick Bishop	Vicki Braswell	Kendra Burrell	Bernard Cass
John Pantelis Arvanitis	Amy Spinks Bartholomew	Mary Martha Bittner	Leighann Breckenridge	Eric Busby	Mr. Tom Cassese*
Theresa Arvidson*	Susan Bartley	Maureen Bizila	Daniel T. Breheny	Javed Butler	Fred Cassle*
Mrs. Lauren Asghari*	Ashutosh Barve	Earl Black	Dr. Dan Brennan	John Butler	Stephen Caton
Gary Ash	Peter Basmajian*	Neal Black	Barbara Bresnahan, MD	Kevin Butler	Jeff Caudill
Mark Ashland		Patricia Black*	Brantley Gerald Brewer		Jack Cecil

Jacqueline Celeste	Shannon Conner	Curt Dame	Brenda Deuell	Linda Duckett	Janice Evans
William and Elaine Cella*	Shawn Conroy	Juliette Daniels	Susan Devencenzi	Susan DuCote	Conradine Even*
Alan Cepe	Thomas Conroy*	Greg Danilow	Mark Devoe	Bradley Duff	Sarah Everhart
Conor Chamberlain	Michael Consolver	Gerald and Laura Darling	Katie DeWall and Joshua DeWall	Robert Duffy	Sandy Falsis
Lynne Chamberlain	Reginald Conyard	Karl Darrah	Janet DeWinter*	Dorothy Duncan	Thomas Farrell
Mary Chamberlain	Rosemary Brattain Cook	Patricia and Richard Dash*	Robert DiCarlo	Greg Dunlevy	David Faulkenberry
John Chambers	Stephen Cookson*	Jennifer DaSilva	Dennis Dietrick	Sherry DuPerier*	Dell Faulkingham
Hyunwoo Chang	Chip Corbett	Richard Daspin	Laura Dillard	Dave Dutkowsky	Noel Faulkner
Layling Chang	Elaine Cormier	Howard Daves	Ralph Dillon	Scott Duttry	Carol Feil*
Mary Chapel	Jacob Correll	Lea David	Jack Dinaburg	Rachelle R. Dwaihy	Scott Feit*
Tom Chatel	Mr and Mrs. Francis and Irene Corsaro*	Justin Davidson	Dina DiPalo	Eric Dyer	David Ferguson
Darren and Priya Check	John Cosby	Kathy Davidson	Rod Dir	Richard Dyjak	Frank Fernandez
James Chen	Jackie Cossmon	Steve Davidson	Joseph Distadio	Sherri Lynne Dymon	Patrick Fick
Brian Cheramie	Christopher Cotter	Frank Davies	Robin Divine	Richard Eaddy, Jr.	Howard Fields*
Daranee Chewaproug*	Kenneth Couls	Aimee Davis	Marissa Dixon	Allen Early	Evan Fischer
Jason Chiklakis	Terri Covert	Carolyn Davis	Peter Dixon	James Earnest	Katherynn Fischer
Don Childers	Joseph Coyne	Freddie Davis	Terence Dixon	Marcellus Easter	Donald Fischman
James Childers*	Jennifer Cramer-Miller*	Mark Davis	Thao Dodson	Wendy Eastman	Fei Fisher
Kuen Tak Chin	Jeremy Cranford	Scott Davis	Donna Doherty*	Lathalia Echols	Greg Fisher
Alan Chinn	Katharine Crawford	Thomas B. Davis	Adam Doiron*	Matthew Edgar	Thermo Fisher
Karamat Choudhry	Joel Crews	Willis Davis	James Doll	Curt Edwards	Lauren Fishkoff*
Clayton Christensen	Richard Crews	Mark and Maureen Davitt	Russ Dominique	Eric Effinger	Brent Fisk
Michael Christine	Dr. Jeff Crippin	Olga De Jesus	Trevor Dominique	Michael Ehrenfeucht	Leslie Fisk
Jean Christopher*	Freyan Crishna	Desiree de Waal*	Jannie Mae Donaldson	Michael Eichenberg	Chris Fitzsimmons
Whitney Christopoulos*	Dawn Criville	Carl Dean	James Donnell	Scott Elfenebein	Cindy Fitzsimmons
Dr. Barbara Clark	Jody Cross	Jesse Dean	James Donoghue	Jennifer Elia	Peter Flanagan*
Bonita Clark	Peter Crowley	Philip DeAngelo	Martha Donoghue	Matthew Elkan	Ron Flauto*
Sheena Clark	Kathryn Cruson*	Deborah Deanovic	Kristen Dooley	Bob Elliot	Marc Fleming
Theodore Claypoole	Frank Cucco	Richard D. Jones and Dechert Desiree de Waal*	Max Dorotheos	Douglas Elliott	Tyler Fleming
David Cline	John Cullen	Jacob DeClercq*	Cheryl Dostie	Rod Ellis	Michael Thomas Flick
Kelly Cline	Stephen Currey	John Deere	James Dotter	Scott Ellner	Cristy L. Flowe
John Coffindaffer	David Cylinder	Brad Deetjen	Stephen and Andrea Dover*	Edwin Elton	James Flynn*
Dana Cohen*	Bill Czajkoski	Ron Deka	Scott Downing	Tony Englert	Jeff Fontaine
Paul Cohen	Eun Czita	Vince and Donna Delie	Mario Doyle	Damian Eonta	Judi and James Fonzi
James Collier*	Darrin D'Agossino	Joseph DeLuca	Noreen Doyle	Matt Eonta	Beth Forbes*
Doris Collins	Tom D'Alessandro	William DeLuca	Tom Doyle	Ernest and Angie Epidendio	Kevin Foos
Scott Colonna	Carl Daley	Gloria A. DeMeo	Sylvia Drapeau	David Erley	Gloria Forbes
Kari Comadoll	Jep P. Dalton, Jr.	Tsegs Denneke	David Drapkin	Salvatore Errigo	Lora Forbush
Greg Conde	Joan Daly	Thomas Depko*	Gary Drexler	Brad Eshoo	Matthew Ford
Fred Conger	Patrick Daly	Martin Deschenes	Ms. Helen Drexler*	Jessica Espinoza	Tamara Lynn Ford
Dayne Conley*	James Dambrosio	Jeffery DeShields	Brandy Dry	Mr. Stephen Kahn, Esq.*	Peter and Lynn Forgosh*
Tabatha Peek Conley				Anne-Marie Evans	Jay Foringer

Emmett Forte	Gretchen Gerbic	Stash Graham	Tisha Guthrie	Craig Harvey	Alexander Hirsch
Edward Fortunato	Paul Alan Gertler	Steve Graham	Synthia Guzman	Deborah Harvey	Sylvia Hoaldrige
Amy Foster*	Lisa Gheen	Elaine Grant	Sandi and Brent Haase	Nichol Harvey	Carrie Lee Hodds
Barbara Foster	Daniel Giaimo	Jon Gray	Colleen Hack*	Mike Hass	Chandler Hodge*
Carolyn Foster	Meredith Giersch	Larry Gray	Marge Hagman	Jason Hassler	Jeffrey Hodge
Cathy Foster	Rodney Gifford	Molly Grazini	Zaegyoo Hah	Estelle Hatcher	Oswald Hodges*
Nancy Fountos*	Alexander Gilbert	Daniel Grealish	J. David Hakman	Angela Klingensmith	Chad Hoeft
Jason Fox	Don Gilbert	Danny Greefield	Mackenzie Halford	Hatfield	Karrie Hoeft
Chuck Frank	Craig Gilkison	Joanne Green*	Andrea Hall	Tasha Hawkins	Richard Leroy Hoffman
Jim Frank	Kevin Gillespie	Timothy J. Green	Jim Hall	Larry Hayes	Lois Hofmann*
Jordan Frank	Ernest Gillum	Todd Green	Rayna Kneuper Hall	Will and Carolyn Hayes*	Marty Hogan
Julie Frank	Kenny Gilmore*	Mrs. Sheryl Greenberg*	James Halpin	Kathleen Headlee*	Gary Hohn
Leland Franke	Norma Giovannetti	Loretta Greene	Oren Hamami	Mary Heaton	Terry Holder-Ryder
Cass Frannkeen	Dr. Chris Gisler	Tony Greene	Catherine Hamilton	John Hegeman	John Hollander*
Jean Frazier*	Rita Glenn	Megan Greenleaf	Pepper Hamilton	Ron and Julie Hein*	Eric Hollar
John Fredericks	Todd David Godkin	Gloria Greenspun	Clay Hamner	Adam Hellebrand*	Jeanne and Conrad Holling
Danny Freeman	Geoffrey Godwin	Eric Greenwald	Jennifer Hamrick	Mark Heller	Rufus Cormel Holman
Wayne Frerichs	Dr. James Godwin	Petros Gregoriou	Laura Hanby*	Cori Helms	Raelynne Holmes
Joseph Frisco	Sharad Goel	Todd Gribble	Belen Handog	Joseph Helwig	Ted Holt*
Claire Fritsche, MD	John Goldman	JoAnn Griffin	Taylor Hanex	Bobby Henderson	Rocky and Jo Hone
Kelly Froelich	Neal Goldman	Jennifer Griffith	Will Hangman	Collin Henderson	Vohn Hoop
Antonio Froio	Dr. Kellie and Mr. Rich	Kevin Griffith	Doris Hank	Helen Henderson	Rose Hoover
Rick Froio	Goldsborough*	Mr. Paul Grill	Paul Hanna	Mrs. Sue Hendon*	Jeffrey Hopper
Guoyong Fu	Dan Gomer	Bud Grissom*	Kathleen Hanni	John Hennessey	Stephanie Hopper
Dr. Calvin and Ann Lentz	Juana Gomez	Chuck and Mary Ann	Greg and Julie Hanshaw	Roberta Hensley*	Janine Horn
Charitable Fund*	Jonathan Goodman	Griswold	Jeffrey A. Hanson	John and Dianne	Eric Allen Horst
The Julie and Robert Potack	Michael Goodman*	David Groenewold	Susan Marie Hanson	Hergenrother*	Alan Horwits*
Family Fund	Alex Goodmanson*	Mandy Grogan	Joe Hardesty	Steve Heritage	Suzanne Hough*
Gaba/Mann Charitable Fund	Leslie Goodrich	Darryl Grondines	Lisa Hardy	Charlotte Herlich*	Elayne Howard*
Paul Gadiant	Rebecca Goodrich	Tom Gronow	Dr. Sundaram Hariharan*	Megan Herman*	Eunice Howell
Gallagher Family	Andrew Gordon*	Arthur Grossman	Cathy Harington	Michael Hernan	Glen Hubbard*
Amy Gallo	Cathy Gordon	Peter Gruenberger*	Chris Harkins	Gina Hernandez	Keith Huberman
Michael J. Gallucci	Lauren Gordon	Richard Guarino	Sue Harmon	Brock Heron	Victoria Hughes
Anna Galvan	Sheila and Alan Gordon	Edward Guerry	W. Harmon	Brian Herring	Eva Hui
Nirav Gandhi*	Florence M. Gorman	Madhu Gulati	James Harper	Ellie Herschlag*	Michael Huie
Donna Garfield	Brian Goshen*	Shaina Gulati	Kevin Harrington	Allan and Nancy Herzog*	Jamie Hulett
Scott Garland	Timothy Gostkowski	Mr. Sonny Gulati	Charles E. Harris	Robert Higginbotham*	Gerald Humphrey
Strait Gaston	Gloria Goudelock	Keith Guller*	Diana Harris	Friedhelm Hildebrandt	John Hunger
Mary Gavagan	Kyle Gourley*	Gia Gunerius	Adam Harrison	James Gerard Hildebrandt	Maria Hunnewell*
Stephen Gee	Benjamin Grabski	Jeanette Gunn	Chris Hart	Amanda Hill	David Hunter
Gretchen Gentzen	John Gragg	Surya Prabh Gupta	Stephen and Margaret Hart	David Hill	Dustin Hunter
Bob Geoffroy	Annette Graham	Scott Gustafson	Ted Hartley	Taryn Hill	Gordon Hunter*
Kimberly Georgekopoulos*				Andrew Himot	

Katri Hunter	Tim Joos	Rashid Khatib	Cindy Krodinger-Copeland	Kelly Leighton	Romina Magno
Syd Hurley	Etienne Jornod	Farooq Khokhar	Danielle Krueger	Deborah Ann Lemis	Megan Maher
James Huson	Cornelius Joseph	Paul Kichler	Patricia Kruse	Jess Lennon	Sameer Mahesh*
Fadi Hussein, MD	Kathy Joslin*	Mark Kiehl	Barbara Krusko	Steven P. Leon	Jonathan Mahoney
Kacy Hutchison	Henry Judd*	Dale Kiel	Shannon Krusko	Pamela Lepley	Adrienna Maisonet-Morales*
Cherub Michele Hutto	Dalia Juskys	Brendan Kiernan	Samuel Kucia	Mike LeSage	Tyrone Malcolm
Ikechukwu Igweike	Deb Kalaritis	Joon Kim	Natalia Kujdych	Maggie Lessard	Warren Maley, MD
John and Diane Imbriale	Ed Kalikow	Alan Kinder	Sanjay Kulkarni*	Ben Lessert	Ahmed Malik, MD
Mark R. Imewitz	John Kalohn*	Mr. Kenneth King*	Doug Kumm	Todd Lessert	Michael Mallon
Thomas F. Infante	Matt Kampman	Christian Kirksey*	Barry Kurzer	Keith Lester	Dorothy Maly
Donald G. Iverson, Jr.	Sharan Kanakiriya	Chris Kiser	Phillip LaFoy	Mia Levesque*	Ellen Maness
Sheela Iyer	Karen Kane	Gerrit Klaerner	Ada LaGreca*	Mr. Alan Levin*	Anthony Leroy Mann
Paul Izlar	Mr. David Kapeluck	Margaret Carol Klahr*	Brendan Lahti	Peter Levin	Deanna Mann*
Jacob Jaacks	Kailesh and Heena Karavadra*	Jeffrey Klanderman	Brent Laing	Josh Lewis	Phillip Mann
Adrienne Jackson	Dayna Karron	David Kleinschmit	Sidhardha Lakireddy	Gregory Lichtenthal	Bill Manning
David Jackson	Randeep Kashyap	Gary Kline	Craig Lamb	Mary Liddell	Amy Mansfield
Juan Jackson	Matthew Kasinecz	Stanley Klocek	Scott Lambert	Skip Liesegang	Shari Manthei
Suzanne Jackson	Cheryl Katz*	Erich Koch	Cecelia Lance*	Howard Liffand	John Marcucci
Keith Jacques*	Dustin Katzin	Karl Koenig	Mike Landolfi	April Liggons	Beth Margolis
Monica Jain	Bill Kauffman	Katherine Koenig	Carolina "Lina" Landrigan	Jennifer Leigh Lima	Brian Marler*
Galina Jaksic	Mark Kaufmann	Kenneth Koenig*	Donald M. Landry	Ying Lin*	Ronald Marquez
Alonzo and Colleen Jamison	Bobby Kelland	Stuart Koenig	Joe Lane*	William T. Hughes and Eileen Lindsay	Michael Marreel
Rubab Jawad	Robert Kellas	Lauren Kohlhoff	Diane Lanese	Matt Linville	Tom Marreel
William Jenkins	Thomas Kelleher	Patsy Kohn	Stan Langhofer	Kathleen H. Lisson	Abigail Martin
Marie Jenkins-Cox	Lori Keller	Elizabeth Kok*	Christina Lankhorst	Michael Lively	Carolyn T. Martin
Mr. and Mrs. Desiree and Todd Jewell*	Karen Kelley	Jeffrey Kolansky	Peter Larsen	Chris and Tricia Locatell*	James P. Martin
Richard Jewell	Kenyon Kellogg	Jessica Kolansky	Lori Larson	Jason Loden*	Nathan Martin*
Xavier Jimenez	George Kelly	Jorgen Kongerslev	Lonnie Larson	Susan H. Lombard	Robert Massey
Truman Joe	Michael Kelly	Lisa Koogle	Tommy Lavelle	Emily Lopez*	Michael Mathé
Jo Ana Johansen	Timothy Kelly	Scott Kopel	Brenda Lawton	John Love	John Matthew Mathis
Curtis Johnson	Robert Kelner*	Larry Korb	Francesca Lawton*	Vince Ludden	Kelly Matus
Elizabeth Johnson	Mark Kennedy	Louis Kosse	Jason League	Rob Luethold	Jeff Maudal
Jerry V. Johnson	Christina Kenney*	Teresa Kosse*	Brian S. Ledford	Kimberly Lumpkins*	Ron Maurer*
Lindsey Johnson	Courtney Kent*	Jane Koven*	Effie Lee*	James Lurie*	Alan May
Patricia Johnson	Richard Kent	Nancy Krah	R. May Lee	Patricia Lynch	Brandon Mayberry
Ronald A. Johnson	Allison Kern	Ronald Krasnow	Randy Lee	Patrick G. Lyons	Jack and Diane Mayer
Mr. Christopher Jones*	Kevin Kern	Leslie Krasny*	Baromkoch Leenutaphong*	Peter Maag	Martha Mayo
Constana Jones	Susan Ketron*	Joanne M. Kraus-Jones	Matthew Leff	Warren Parker Maas	Nicholas J. Mazzola
Lawrence Jones	Gary Key	John Krekovich	Bruce and Coco Lefkowitz	Jeff Mack	Gary McArthur
Lorna Jones*	Ghassan Khabbaz	William Kremer	David Lefkowitz	John Madrid	Bobby McAvoy
Matt Jones	Elaine Khan*	Vincent Krise	Carol Leibenson*	Martin Mager	Terri and Mark McBeth*
		Jo-Anne Kristensen	Allison Leibowitz		Michael McCafferty

The Roger Odenberg and Cathleen McCafferty Family Fund	Brad Meyer	Dr. James Moore	John Neal	Mariana Oonk	Mike and Jodi Perkins
Brian McCann	Bryan and Stephanie Meyer	Ryan Moore	Sara B. Neal*	Robert Opatrny*	Jeffrey Perlmutter
Connor McCarthy	Darisa Hill and Melinda Meyers	Jennifer Morel	Andrea Neel	Benjamin Orgel	Edwin Peskowitz
Tom McCauley	Daniel Mezich	Dr. Michael Moritz	Anthony Neidlinger*	William Orgel	Emily Peterson
Mark McClam	Mark Mezzano	David Morris	Ben Nelson*	Maria Jocelyn Orig	Marcella Peterson*
Angela McClure	Virginia Michaels*	J.J. Morris	Eric Nelson	Edward Orlando	Philip and Ginny Petraglia
Michael McColgan	Katherine Michiels	Jeffrey Scott Morrison	Kimberly Nessel	Ben Orris	Cynthia Pettit
Mark McCool	Joseph Miele	Michael Morrissey	Michael Bernard Neu	Robert Ort*	Joseph Pewdo
Frank McCusker	Andrea Miller	Pierre Mortemousque	Laura Newsome	Julie Osborne*	Jason Philips
Nora McDonald	Barbara E. Miller	James Mosey	Christopher Newton	Michael Ossip	Jeff Phillipe
Richard McDonald	Dirk Miller*	Alan Motsenbocker	Marcy Newton	Vincent Oswald*	Jeffrey Scott Phillips
Liam McDonough	Greg Miller	Yvonne Moussa	Mike Nguyen	Fernando Otero*	Kimberlina Phillips
Mauclin McGann	Kristin Miller	Mei Kuen Moy	Dr. Stephen Nicholas*	Thor Ourada	Matthew Phillips
Tom McGinnis*	Melville Miller	John Moylan	Dr. Silke Niederhaus	Dr. Rosemary Ouseph*	Marigrace Piazza
Logan McIntosh	Robert Miller*	Scott Mozarsky	Ruba Nijmeh	Brian Outland*	Melissa Picard
Terri McIntosh*	Ryan Miller	Lori Mulichak	Nicholas Nissen	Dr. Aparna Padiyar*	Michael Piccolo
Lauren McKenna	Susan K. Miller	Karin Mullin	Robert Nobile	Telea Paettie*	Ellen Marie Pierce
Noele McKinley	Ted Miller	Stephen Mullins	Ashley Noble	Kevin Paige	Johnathan Pierce
Thomas J. McLaughlin	Tracey Milligan	L. Mulloy	Nannette Nocon	Russ Paine	Scott Pierce
Niall McLaughlin	Wade Mills	Brian Mulvey	Frank and Maria Noordover	Dr. Paul Palevsky*	Lisa Pillsbury
Peden McLeod	Anna Milo	Bradford Murdock	Michael Nosbisch	Samantha Palma	John Pilmer*
Nicki McMahan	Michael Milone	Shannon Murphy	Scott Notowich	Morgan Palmer	Jeremy Piltzmaker
Bob McMyne	Nickolas Mineau	Brian Murray*	Robin Nowlin	Ann Pantera	Sam Pines
Douglas McNulty	Jan Minetree	Charlene Murray	Joanne Nuzzo*	James Pappas	Jennifer Piper
Angus McQuarrie*	Sheldon Minkowitz	Christy Murray	Brian O'Connor*	Mickey Parenton	James Pistillo
Latane Meade	Michael Miracle	Howard Paul Murray	Jimmy O'Connor	Earl Parker	Ms. Ann Pittaoulis
Karin Meador	Katherine Mitchell	Tom Murray	Tim O'Day	Patricia Parker*	Kevin Plosser
Christy Means*	Naquia Mitchell	Susan Mylet	Beth O'Driscoll	Elaine Parks	Thomas Pohlman
Danny Mecimore	W.H. Moehrke	Julie Na	John O'Neill	Buck Parson*	Rudolfo Polak
Kevin Meehan	Jeff Mohr*	Mr. Anthony Naccarato*	Robert O'Neill	Ravi Patel	Gregory Pool
Ashley Meekins	Maxine Moir	Vivek Nadkarni	Alan Oak	Rupa Patel	Bruce Porter
Henry Meier	Steve Moll	Wes Nagel	Julie Obeid	Suresh Patel	Michael Postal*
Kathryn Meiners	Steve Moll	Christopher Nagle	Allison Obenhaus	Daniel Payne	Jonathan Potack*
Lori Melton-Jacks	Donald Molony	Bhupendra Nagpure	Jennifer Oesch	John Peachey	Jay Powell
Vivek Melwani	Dan Monahan	Aron Nakazato	Nii Ofosu-Amaah	Kathy Pearson*	Will Powell
Rob Meniz	Robert Monahan	Patricia Nanian	Larry Ogunjobi*	Angela Pecha	Steve Prada
Brian Menkhausen*	Drew Carl Monitto	Nicholas Nash	Edward and Mary Oleksiak*	Louis Pellegrino	Michael Prainito
Thomas Mercein	Sarah Montgomery	Laeth Nasir	Diana Olivo	Rebecca Pendergast*	Almaden Press
Karen Meredith	Shanti Montgomery*	Souha Nassar	Mark Olsen*	Aaron Pennell	Julia Suzanne Pretl
Creighton Mershon	Edward Moore	Ramani and Carmel Nathan*	Anya Maria Olsen	Heather Pennell	Chris Pricco
Matthew Messmer	Karen L. Moore	Laura Natividad	Dr. Paul Olson	Michelle Peralta	Brad and Shannon Price*
	James Moore	Gregg Navins	William Olson*	Ken Perkins*	Joe Price*

James J. Prisciandaro	Mark Rengert	Andrew Ruben	Susan Schneider	Jeffrey P. Shrimpton	Ashok Soni*
Michael Proto	Jeffrey Resnick*	Nicole Rudman	Marilyn Schrader	Jonathan Shumaker	Danielle Soranno
Gabriel Purvis	Dan Reynolds	Liana Ruiz	Mike Schrader	George Shumate	Jackie and John Sornson
Christopher Quade	Kayla Reynolds	Kristin Russell	Tony Schrader	Helene Shumate	Cesar Sosa
Raymond Quigley	Nicole Reynolds	Judy Russo	Jerry Schrier	John Silkensen*	Jewel Southerland*
Melissa Quiles	Ron Reynolds	Dennis and Marie Ruth*	Joseph Schuemann	Russell Silverstein	Suzanne and Ted Spall*
Elizabeth Quinn	William and Jeanne Rezuke*	Kym Ruth	Edward Schuler	Robert Simkins	Jennifer Speal
Shadd Ragan	Matt Rhenish*	Bernadette M. Ryan	Richard Schulman*	Wayne Simmons	Robert Spiak
Dhananjay Raghavan	Jennifer Lee Richardson	Patrick Ryan	Cynthia Schultz	Mr. Christopher Simon	Kendall Splawn
Susan Ragon*	Marsha King Richardson	Brian Sabine*	Eric Schulze	Jack Simon*	Christine Sprague
Sabrina Rainey	Scott Richman	Chandra Sacheti*	Stefan Schulze	Mark Simons	Kathleen Sprenger
Kim Rallis	Thelma Richmond	Jake Sadler	Kim Schumann*	Barbara Sims	Marty St. Clair
German Ramirez	Beth Ridge	Debra Safaei	Katrina Schwarting	Andrew Singer	Jennifer St. Clair Russell*
Robert Ramirez	Gary Ries	Deborah Sagues*	Andrew Schwartz	Russell Singer	Maureen St. John*
Nedra Randall	Mark Forster Riley	Rajiv Sahni	Susan Schwartz	Inderjit Singh*	Wendy St. Peter
Nicole Randall*	Hernan Rincon-Choles	Harjinder Saini	Jesse Scott	Joseph Singh	Melissa Stacy
Natarajan Ranganathan, MD	Victoria Ringwood	Morris Saks	Jimmie Lynn Scott	J. Matthew Singleton	Veronica (RB) Stanley
Karthik Ranganna	Eric Ritchey	Jennie Salas*	Andrew Seaton	Kate Sinkus	Lauren Stansbury
Darrell and Carol Rangnow*	S. Bradford Rives*	Moses Salcido	Susan Sedmak*	Richard Sinnott	Michael Stanzak
Karen Ransohoff	Louis Rizkallah	Samantha Sammut	Tracy Seekings	Michelle Siri-Beyzak	Waller R. Staples, IV
MaryAnne Rasmussen*	Jack Robbins	Lee Sanders*	Kaylee Jo Seeley	Stephen Sklany	Andy Starr*
Mina Rasoulpour	Richard Roberts	Kulwant Sandhu	Carl Seitz	Mr. Paul Skluzacekbus	Antonia Staten
Dana Jerome Rathbun	Jackie Robinson	Paul Sandok	Ms. Manty and Mr. Seitz*	Jessica Slater	Nancy Staton
Dr. Elizabeth Rave*	James and Elizabeth Robinson*	James Sands	Danny Semaan	Kay Sloan	Heather Steglich
Logan Rave	Michael and Nancy Robinson	Paul Sandy	Wendy Serrano-Gonzalez	David Smith	Martin and Helen Stein
Wendy Vinson Ray	Leon Robison*	Lucy Sanna	Keith Severns	Elizabeth Smith	Jill Steinhauer
Dr. Lynn Rea	Robert Rodkey*	Joseph Santagata	William Sexton	Graeme Smith	Christine Stephens
David Reader*	Jake Roger	Robert Santella*	Amy Shaddock	John Smith*	Ashley Sterling-Rogers
Jason Ream	Joseph Rogers*	Albert Santorelli*	Jennifer Shaffer	Joseph Smith	Leonard Stern
Corlyne Recht*	Tim Rogers	Leo Engando Santos	Lisa Shaffstall*	Karin Smith	Roger Stern*
Melissa Redding	Catherine Romano	Ravindra Savanur	Maxim Sharbaugh	Michael Smith*	Ian MacDonald Stewart
Dr. James Redington	Alain Romero	John Sawyer	Randall R. Sharp	Michael Smith	James and Alberta Stewart*
Idara Reece	Michelle Rose	Marianne Scandone	James Shaughnessy*	Mike Smith*	Raymond Stewart
Doris Reed*	David Rosenbaum	Thomas Schall	Caroline Shaw	Robert Smith	Dennis Stogsdill
Dana Reekie	Melissa Rosenbaum	John Schaller	Gary O. Shaw*	Steven Smolinsky	Alan Stone
Michael Reich	Daniel Rosenberg*	Steven Schauer	Jonathan Shea*	Trent Snarr	Maureen Stone
Fran Finn Reichl*	Lee Rosenthal	Diana Schindler	Nabil Sheikh	Schuyler Sneed	Matt Stone
Sandy and Gene Reid	David Ross	Hank Schlissberg	Mark Shepherd	Eric Snyder	Ruth J. Stone
Daniel Reilly	Dr. John Ross*	Gary and Terri Schmitt	Chad Sheridan	Jeff Snyder	Susan Stone
Lindsay Reiss	Stephanie Ross	Karen Schmitt	Ronna Sherman	Jennifer Sobecki	Ty Stricklin
Don Reitz	William Roundtree	Craig Schmitz*	Kenneth Shirreffs	Jaymee L. Somberg	Catherine Strong
Stephen Renfroe		Gary Schmitz*	Maral Shoaei	Tom Sommerfield*	Kelli Strother
Tonya Renfroe		Kent Schmor	David Shook*	Matt Sommers	Deanna Struk

Laurie Stultz	John Thatcher*	Daren Turner	Dr. Tom Waid	Wes Westberry	Janne Wissel
Jim Sullivan	Doug Thomas	Dave Turner	Lowell Wainwright	Nicholas Wetzel	Melissa Witcher
Katrina Sullivan*	Janet Thomas	Dennis Turner	Carolyn Wakeman	Cameron Whaley	Henry Witt
Matt Sullivan	Peggy Thomas	Lindsay Turner	Barry Walker	Katie White*	David Wojciechowski*
David Sultzer	Susan Thomas*	Lindsey Turner	Geoff Walker*	Margaret White	Barry Wolf
Ann Louise Sumner	William Thomas	Melinda Turner	Joshua Walker	Marilyn White	Jason Wolfe
Andy Sundgaard	Alisa Thompson	Wanle Turton	Richard Walker	Stephanie L. White	Peter Wolfe
Les Suomela	Bruce Thompson	Kim Twitchell	Melanie Wallace	Rick Whitlow	Doug Wood
Ken Sutha	D. Kent Thompson	Michele Tyler	Gary Walljasper	Lisa Whitman	Edward Wood
Thomas Swaim	Lance Thomson*	Timothy Tyler	Rachel Walljasper	Hancock Whitney	Tom Wood
Richard A. Swanson	Rich Thompson	Colleen Uhles	Sarah Walljasper	Donna Whittle	Karen Woodard
Rob Sweatt	Thomas Thompson	Mark Upchurch	Chris Walsh	Mary M. Whitton	Robert Worgaftik
Cynthia Sweeney	Kathleen B. Thomsen	Gregory Usdan	Whitney Walter	Muliani Widjaja*	Tanya Wozniak
Kevin M. Sweigard	Mr. Orlan Thorbeck*	Scott Vaccaro	T.J. Walth	Ann Wiesman	Robin Wright
Dean Swenson	Tracy Thornley	Michael Vadini	Jason Walton	John W. (Jack) Wilcox	David McIntosh Wyant
Gregory Swienton	E. Jacky Thornton*	Jason Valdetero	Tangela Walton	Fred Wiley	Sierra Wyman
Jacqueline Szafara	Shawn Tidwell	Annette Van Allen	John Wang	James Wilkerson*	Hongye Yang
Michael Szmidt	Mike Tigges	David and Sally Vanella*	Tom Wanglien	Nancy Wilkes	Arlene Yaoto*
Andrew Szymanko	Jami Tillery	Michael Vanyo*	Dr. Bradley Warady and Mrs. Barbara Warady*	Jason Wilkinson	Dan Yee*
Kara Tabor-Furmark	Richard Tinari	Joseph Vassalotti	Frederick Warder	Ciara Williams	Marika Yoho
Vincent A. Tacci	Paula Todd*	Tim Vaughn	Michael Warren	Gloria Williams*	Alexandria York
Charlotte Kyunghee Tahk	Sara Toffoli	John Vellone	Penny Wars	Kelly Williams	Bruce M. Young
Jillian Talbot	Albert Togut	Donald Venable	Trisha Washington	Kimberly Williams	Hubert Young*
Jean Tanaka	Debbie Carolyn Toland	Vivek Venkatesh	Erin Penrose and Mitchel Watson	Mary Elizabeth Williams	Melvin Young
Shivani Taneja	Jeffrey Toll*	Tad Alan Venn	Susie Way	Olivia Williams	Amy Younger
Judith Tanur	James Tolve	Russell Vereen	Mr. Alex Wayman	Sina Williams	Andrea Yuen*
Ruby Tarver	Michael Torbert	Nicholas Vesom	James Wayman	Willie Williams	Melvin Yudis, MD*
Peter Tattle*	Rachel Torgueman	Alfred Vichot	Musaab Wazwaz*	Deborah Willig	Juanito Zapanta
Lynne Tatum*	Annie Totah*	David Viera	Paul Weatherby	William Wilmer	Joshua Zaritsky
Rick Taylor	Sina Toussi	Adolfo Villar	Mary Jane Weatherford	Anne Ryan and Mary Ellen Wilson	Mr. Greg Zavoyna*
Mr. Rick Taylor	Kevin Tracy	Bernadette Vincent*	Dr. Lisa Weber*	James Wilson	Andrew Zehler
Marcy Taylor	Tara and Larry Trebesch	Jared Vincent	James Wein*	Kelly Wilson	Barry and Robyn Zeller*
Marianne Taylor	Latonya Trimble	Melissa Vlask	Donna Weisgerber	Patricia Wilson	David Zemel
Patricia Taylor	Alan Trinkle	Zbynek Vlcek	Adam Weiss	Steven Wilson	Rona Zemel*
Wayne Taylor	Thomas Trobiano	Dr. Mai Vo*	Helene Weisz	Cathy Wilson-Bates	Jane Zhang
Sandra Teitelbaum*	Paul Trokhan*	Mary Voce*	Richard Welborn	Stephen Ray Wilt, MD, PhD	Heather Zick
Diana Teng	Melvin Meinz Living Trust	Kristen Von Cloedt	Mary Ellen Welch	Dennis and Kathie Wingers	John Zielinski
Basia Terrell*	Peter Tsimoyianis	Natanya Wachtel	Cathy Welliver	Maureen Wirth	Bob Zieman
Michelle Terry	Karen Tubridy	Larry Wade	David Welsh	John Wise	Dave Zitur
Jeannette Testoni	Leah Tufts	Gregory Wadeyka	William Wendlandt	Heather Wisniewski	Peter Zurkow
Hieu Thai	Jeff Turcotte	Alex Wagner	David Werwinski	Robert Wisniewski	Russell Zusi*
Thomas M. Thaney	Jeffrey Turek	Mr. Steve Wahlin*			

CORPORATE SUPPORTERS

1M +

AstraZeneca Pharmaceuticals LP
Bayer AG

\$500,000–\$999,999

Fresenius Medical Care
Janssen Pharmaceuticals, Inc.

\$250,000–\$499,999

Boehringer Ingelheim
GlaxoSmithKline
Horizon Therapeutics
Konica Minolta Business Solutions
Mallinckrodt Pharmaceuticals
Natera
Otsuka America Pharmaceutical, Inc.
Relypsa, Inc.
Retrophin, Inc.
Sanofi Genzyme U.S.
Satellite Healthcare

\$100,000–\$249,999

Amgen
Blue Cross Blue Shield
CareDX
DaVita
Exelixis
Holland & Knight LLP
Insurance Auto Auctions, Inc.
Kenmore Realty Corporation
Osprey Medical
PA Department of Health, Bureau of Family Health
The Patient-Centered Outcomes Research Institute (PCORI)
Sanofi
Tricida, Inc.
United Way

\$50,000–\$99,999

American Renal Associates
AmeriHealth Administrators, Inc.
Anheuser-Busch Companies, LLC
Atlantic Tomorrow's Office
Aurina Pharmaceuticals Inc.
Baxter International Foundation
Boehringer Ingelheim Pharmaceuticals, Inc.
Bristol Meyers Squibb
C. Parker Simpson and Suzanne Simpson
Charity Supply, Inc.–Carrollton, TX
CSL Behring LLC
Duke University–Durham, NC
Fiesta Restaurant Group, Inc.
GE Healthcare Systems
Keryx Biopharmaceuticals, Inc.
LogistiCare Solutions, LLC
McCrea Equipment Company, Inc.
Merck & Co., Inc.
New York Road Runners
NKF Community Health Charities
Novartis
Omeros Corporation
Others First
Plantronics, Inc.
Reata Pharmaceuticals, Inc.

\$25,000–\$49,999

Advicenne
Alexion
Alliant Health Group, Inc.
Alnylam Pharmaceuticals
Ardelyx, Inc.
AT&T
Barnes-Jewish Hospital
Berkadia Commercial Mortgage LLC
BUILT National
Centers for Dialysis Care
Centura Health–Englewood, CO
Chemocentryx, Inc.–Mountain View, CA
THE CORPUS
Delta Dental–Louisville, KY
Discovery Shared Services
East River Medical Imaging
ECC Group, Inc.
Eisai Inc.
Equus Capital Partners, Ltd.
Ernst & Young, LLP
Fifth Generation, Inc.–Tito's Handmade Vodka
Global Health Products, Inc.
Greg and Patty Penske
Hartford HealthCare
INMED Medical
Jefferies Financial Group Inc.
John Catsimatidis/United Refining Company

Koppers, Inc.
Meditech
Mid-Atlantic Nephrology Associates
MUFG Union Bank
National Kidney Center
Nephrology Associates
Opko Health, Inc.
OptumRx®
Pfizer
Sanford Health
SAP National Security Services
Sarris Candies, Inc.
Stanford Children's Health
Therma LLC
UCSF Health
University Hospitals Transplant Institute
University of Colorado
University of Maryland Medical System
University of Pittsburgh Medical Center (UPMC)
Veloxis Pharmaceuticals
Winifred Glossop and Asenath Evans Fund
WRG Creative

\$10,001–\$24,999

AbbVie
 Aetna
 Afiniti
 Akebia Therapeutics, Inc.
 Akron Alumnae Assoc. of Kappa Kappa Gamma
 Allegheny Health Network
 Alliant Health Solutions, Inc.
 Allmond & Company, LLC
 American Express
 American Kidney Fund
 Americare Kidney Institute
 Ampco-Pittsburgh
 Anthem, Inc.
 Associates in Kidney Care, PLC
 AT&T
 Attain, LLC
 Avera McKennan Hospital & University Health Center
 Ballard Sphar LLP
 Beth Israel Deaconess Medical Center
 Bethesda Health Group, Inc.
 Brighthouse Life Insurance Company
 Calliditas Therapeutics AB
 Camp Construction Services
 Capital Group
 Cassena Care
 Catholic Health Initiatives
 CBS Interactive—New York, NY
 Chai Lifeline—Lakewood, NJ
 Cigna Health and Life Insurance Company—Philadelphia, PA
 CIT Group, Inc.
 City of Austin—Austin, TX
 Collins Building Services, Inc.
 Colorado Kidney Care
 Comprehensive Health Management, Inc./Wellcare—Tampa, FL
 Dallas Nephrology Associates—

Dallas, TX
 Delta Dental of Colorado
 Department of Veterans Affairs
 Diablo Nephrology Medical Group
 Disney Worldwide Services, Inc.
 Donor Alliance, Inc.—Denver, CO
 EMD Serono, Inc.
 First Energy Corp.
 First National Bank
 Fryar Private Wealth Management Group of Wells Fargo Advisors
 Genentech, Inc.
 Georgia Built, LLC
 HM Life Insurance Company
 iHeart Media Sports Marketing
 International Business Machines Corporation (IBM)
 The Illuminating Company – FirstEnergy Corp.
 Irene H. Lawrie
 ISU
 John Muir Health
 Kaiser Permanente
 Kidney Specialists of Minnesota, P.A.
 KidneyTexas, Inc.
 Lalita Katre IRA
 Latham & Watkins, LLP
 McCormick & Company, Inc.
 Metrolina Nephrology Associates, PA
 Microsoft Corporation
 Nemours/Alfred I. duPont Hospital for Children
 NxStage
 Pentech Health, Inc.
 Phoenix Marketing Solutions
 The Pharmaceutical Research and Manufacturers of America (PhRMA)
 Piedmont Healthcare, Inc.
 Pikes Peak Nephrology Associates, P.C.
 PNC Financial Services

PPG Industries, Inc.
 QueensCare
 RadNet Management, Inc.
 Red Hat Software
 Reliable Roofing
 The Rogosin Institute
 Sensiba San Filippo LLP (SSF)
 Shire Pharmaceuticals LLC
 SMSC Gaming Enterprise
 SSM Health Cardinal Glennon Children's Hospital
 State of California
 Stone Point Capital
 Sun Life Assurance Company of Canada
 SurgiCare of Manhattan
 TD Bank, N.A.
 Thomson Reuters Corporation
 Tufts University
 United Healthcare Service LLC
 The University of Kansas Health System
 University of Kentucky HealthCare
 U.S. Renal Care
 Venable LLP
 Wells Fargo
 Wichita Nephrology Group, PA
 Wilbraham, Lawlar & Buba, P.C.
 Yale New Haven Hospital Primary Care
 YourMembership—Member Management Software

\$2,501–\$10,000

Arthrex, Inc.
 Atlas-Acon Electric Service Corp.
 Boulevardstar LLC
 Brandywine Operating Partnership, L.P.
 Calithera Biosciences, Inc. (CALA)
 Carahsoft Technology Corporation
 Clark-Reliance Corporation
 The Clearing House
 CMH Services, Inc.
 Colchis Capital Management, L.P.
 Columbia Nephrology Associates
 Cozen O'Connor P.C.
 Cushman & Wakefield
 Dallas Renal Group (DRG)
 Dialysis Clinic, Inc. Dialysis Care Center
 Dilworth Paxson LLP
 Duane Morris LLP
 Foer's Pharmacy
 Fox Cable Networks
 Fraternal Order of Eagles
 Fresenius Medical Care—Elkins WV Office
 G & C Food Distributors & Brokers Inc.
 GPI LTD
 Heuser & Heuser, LLP
 Ion Media Networks
 Jones Lang LaSalle Incorporated
 John Heher Family Fund
 Johns Hopkins Medicine
 Kinsley Construction, Inc.
 Liberty Auto Group, LTD
 Massachusetts General Hospital Transplantation
 Recanati/Miller Transplantation Institute at Mount Sinai
 New York Presbyterian Hospital/Weill Cornell Medical Center
 North Texas Kidney Consultants
 Norton Healthcare
 OneLegacy Foundation

Pearson Mazda
 Penn Transplant Institute
 Peninsula Continuum Services
 Publicis Media
 Randall & Quilter Investment Shalom & Zuckerbrot Realty LLC
 Teredesai, McCann and Associates, P.C.
 University of Rochester
 Vanderbilt Mortgage and Finance, Inc.
 Vascular Surgery Associates, LLC
 Virginia Commonwealth University Health System
 Viacom Media Networks
 Wayne Lanhardt/McCrea Equipment Company, Inc.
 Wheels Up Partners LLP

\$1,500–\$2,500

Azura Vascular Care
 Abbott Nutrition
 Achillion Pharmaceuticals
 The Hamilton Bank
 Keswick Multi-Care Center
 Orchard Hill Rehabilitation & Healthcare Center
 Rockwell Medical

ESTATES AND TRUSTS

\$10,000+

Denise Acee Annuity Trust
Abi A. Afonja Trust
Coletta A. Ammann Estate
Virginia Argeropoulos Estate
Mary Barsam Estate
Louis Bava Annuity Trust
Ruth R. Berry Estate
Financial Brighthouse
RonaldvBrown
Martha Florence Caldwell
Sandra Kay Chetty Trust
Henry F. Collins Trust
Victor Cooney

Sandra Coplon Annuity Trust
Lydia Defilippo Trust
Donald Denton Trust
Francis A. den Outer Trust
Lavonne R. Dunn Trust
Gilbert and Rona Eisner Annuity Trust
Elizabeth and Franci Trust
Luz Marina Frohwein Trust
John and Francine Gilman Annuity Trust
Dorothy Glick Estate
Allan C. Hamilton Trust

Pearl Hughes Estate
Patricia luele Estate
Walter Jeter Trust
William Jones Annuity Trust
Lalita Katre
Eleanor Kent
Kenneth M. Knee Estate
The G H Langenfelder Memorial Charitable Trust
Irene H. Lawrie Trust
Elizabeth Lee Louie
May Li Trust
Rose Marshall

Mary Gene McCord Trust
Sharon L. Norkin Trust
Angeline Paradiso Trust
Marcia Perry Annuity Trust
John Patrick Perryman Estate
Sarah V. Ridgeway Trust
Alan and Beverly Ross Annuity Trust
Marjorie Sanchez Trust
Antoinette Denise Satchel Estate
Walter and Marian Schell Annuity Trust
Fritz N. Schneider Trust
Nancy C. Schultz Estate

C. Parker and Suzanne Irene Simpson Trust
Marko Simunich
Dorothy J. Stebbins Trust
Phyllis Anne Stinnett Estate
Katherine Tollin
Sheryl L. Torner Annuity Trust
U.S. Charitable Gift Trust
Patricia Valachovic Annuity Trust
Carl Albert Varuola, Jr. Estate
Miles Vilski Annuity Trust
Ruth Wall

FOUNDATIONS

\$10,000+

Ampco-Pittsburgh Charitable Foundation
Baxter International Foundation
Louis and Sandra Berkman Foundation
The BGR Foundation, Inc.
The Joseph Keith Burgess Foundation
John and Maurine Cox Foundation

Donnini-Rudolph Family Foundation
ForelKids Foundation, Inc.
Stephen A. and Diana L. Goldberg Foundation, Inc.
John and Marcia Goldman Foundation
John Heher Family Fund
The Liberty Furniture Industries Charity Fund of The Cobb Foundation

The McCutchen Foundation
John Moffitt Foundation
Ochsner Clinic Foundation
PA Department of Health, Bureau of Family Health
Patient Access Network Foundation
Joy and Ron Paul Foundation
Irene and C.B. Pennington Foundation

J. and K. Pi Family Foundation
The Rees-Jones Foundation
Paddy Reilly Memorial Foundation, Inc.
Schneider Electric North America Foundation
Kenneth L. and Eva S. Smith Foundation
St. Louis Foundation Household

Truman Heartland Community Foundation
Wasserman Foundation
The Wawa Foundation Inc.
Harry and Jeanette Weinberg Foundation, Inc.
Weisfeld Family Foundation
Stanley Shalom Zielony Foundation

CORPORATE MEMBERSHIP PROGRAM

PLATINUM

Tricida

GOLD

Akebia Therapeutics
Amgen
AstraZeneca

Aurinia

Exelixis Mallinckrodt Pharmaceuticals

Merck

Otsuka Pharmaceuticals

Pfizer

Relypsa

SILVER

Alexion

Baxter

Bayer Healthcare

Bristol-Myers Squibb and Pfizer

ChemoCentryx

Eisai

Glaxosmithkline

Janssen Pharmaceuticals

Medtronic

Novo Nordisk

Opko Renal

Reata

Sanofi Aventis

BRONZE

Anji Pharma

Ardylex

Diamedica

Mission Statement The National Kidney Foundation, a major voluntary nonprofit health organization, is dedicated to preventing kidney and urinary tract diseases, improving the health and well-being of individuals and families affected by kidney disease, and increasing the availability of all organs for transplantation.

NKF SERVING THE LOCAL COMMUNITY



WHAT'S NEW:

In January, **NKF Serving Alabama, Georgia and Mississippi** hosted the largest-ever Drive for Dialysis event in partnership with Relypsa, Inc. employees, resulting in \$25,000 raised and 1,000 care packages delivered to dialysis patients across the city. We are so grateful for Relypsa's commitment to supporting the kidney community around the country, all year long.

NKF Serving Kansas, Oklahoma & Western Missouri, with medical support from Children's Mercy Hospital and Clinics, hosted Camp Chimera, a five-day overnight summer camp for children ages 9 to 18, who are undergoing dialysis treatment or received a kidney transplant. This year, 50 lucky campers were able to enjoy the outdoors with their peers, supported by 30 camp counselors and 80 volunteers.

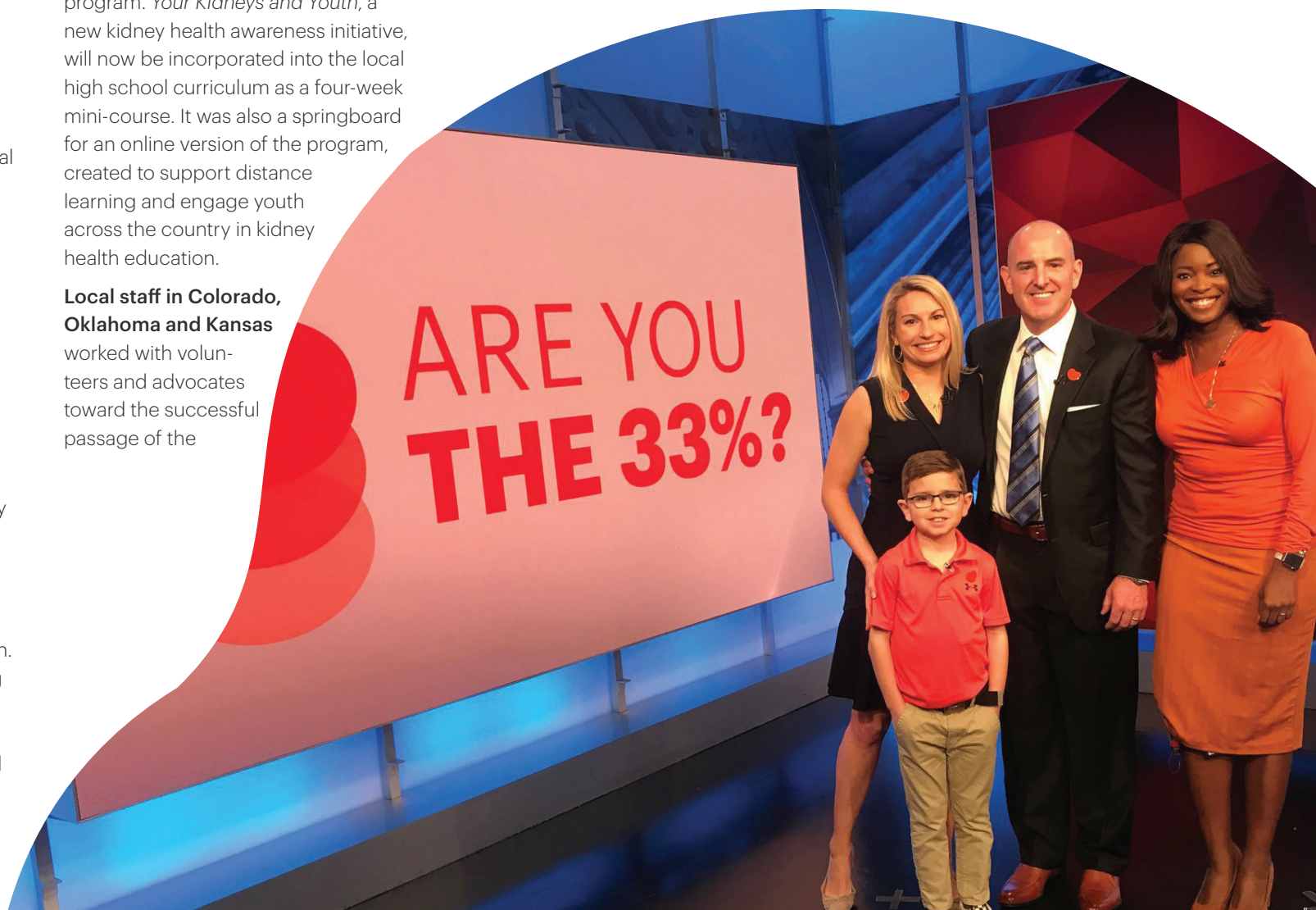
NKF Serving Northern California hosted a record-breaking 31st Annual Author's Luncheon. The largest literary event of its kind in the Bay Area, the Author's Luncheon brought together local celebrity authors including Pam Jenoff, Adam Mansbach, and Gianna Marino to raise funds for NKF's mission. With support from sponsors including Therma, LLC and Satellite Healthcare, the 2019 event raised \$505,000 – more than ever before – and attracted more than 800 attendees with a

passion for literature and kidney health. In the Northeast, **NKF Serving Greater New York** and their coworkers at **NKF Serving Eastern Pennsylvania & New Jersey** successfully piloted *Your Kidneys and Youth* with high school students during a summer education program. *Your Kidneys and Youth*, a new kidney health awareness initiative, will now be incorporated into the local high school curriculum as a four-week mini-course. It was also a springboard for an online version of the program, created to support distance learning and engage youth across the country in kidney health education.

Local staff in Colorado, Oklahoma and Kansas worked with volunteers and advocates toward the successful passage of the

Living Donor Protection Act (LDPA). This life-saving legislation prohibits the denial of coverage or increases in insurance rates for living organ donors. Meanwhile, staff in **St. Louis** assembled a group of 50 advocates, including board members, living

kidney donors, and transplant recipients on Kidney Community Advocacy Day to share the significance of this legislation with the kidney community.



LOCAL HIGHLIGHTS

NKF Serving Texas successfully renewed their Blue Cross Blue Shield Healthy Kids Healthy Families Grant, providing \$190,000 to support KEEP Healthy checks opportunities throughout the state.

NKF Serving Kansas, Oklahoma and Western Missouri launched their inaugural Oklahoma Kidney Conference, a half-day medical symposium sponsored by Oklahoma University Medicine. Thanks to the commitment of a passionate and dedicated committee, more than 75 medical professionals benefited from a range of specialized sessions including cognitive impairment and kidney disease. The event grossed \$22,000.

The Central Ohio team brought together more than 120 renal health professionals to attend an Annual Kidney & Transplant Symposium. This was their largest professional program to date, surpassing their fundraising goal by \$35,000.

NKF Serving New England partnered with Brigham & Women's Hospital for a Kidney Crossroads patient education event that helped patients cope with kidney disease through stress reduction methods and education about kidney disease management.



WHAT'S TO COME



THE year 2020 has been one of the most difficult years in decades. COVID-19 has wreaked havoc on kidney patients in general, but the virus has also cast a spotlight on social and economic disparities that hang over people of color in particular, and the grave risk those disparities cause in people's lives. This pandemic has shown us that racial inequality is not just a social problem, but a health-care crisis that everyone must work to solve.

WHAT'S TO COME:

When COVID-19 put the brakes on much of the world's activities, froze economies, and forced mankind to stay at home and wait, the team at the National Kidney Foundation was still working hard, because millions of kidney patients needed us now more than ever.

We may have changed how we do things, from operations to fundraising, but what hasn't changed is our mission – to serve our patients, professionals, and care partners and continue to advance the prevention, diagnosis and treatment of kidney disease. And we won't stop searching every day for new ways to meet the growing needs of our patients.

We also recognized that racial inequalities in America have created disparities in healthcare, including in kidney health care, and we are working to get to the bottom of it. People of color represent a disproportionate percentage of kidney patients in America. That can't continue.

So, on July 2, 2020, we joined with the American Society of Nephrology (ASN) to form a **joint task force** to focus on the use of race to estimate GFR. [The NKF-ASN Task Force on Reassessing the Inclusion of Race in Diagnosing Kidney Disease](#), in consultation with an eGFR Advisory Board, plans to provide

its initial recommendations in 2020. Stay tuned in FY21 to hear more about this important and timely work.

We are also launching in FY21 the first ever patient-centered, nationwide kidney disease patient registry called the [NKF Patient Network](#). Anyone with all stages of kidney disease will be able to provide data to help researchers answer critical questions to improve care and ultimately find a cure for kidney disease. Patients will also have access to personalized education, a community forum, and local resources.

In FY21 we will continue the [“Are You the 33%?”](#) Kidney Risk campaign, a partnership between The National Kidney Foundation, U.S. Department of Health and Human Services, and the American Society of Nephrology, to reach the 1 in 3 adults in the U.S. at risk for kidney disease.

COVID-19 presented an obstacle like no other to the launch of our campaign, initially held in March 2020. But, after careful consideration and research that helped us validate our strategy to temporarily pause it, we moved full speed ahead with the relaunch of the “Are You the 33%?” campaign in September 2020. The words of Thomas A. Edison, “There’s a way to do it better – find it,” have become

motivating as we sought to adapt to new challenges in real-time and pivot toward a campaign relaunch solution. Recognizing that one of the biggest findings of COVID-19, and its impact on the most vulnerable, is that the virus creates more kidney patients we brought more innovative and aggressive messaging to our content encouraging consumers to engage with us on a more urgent level.

In FY21, we have a lot of exciting tactics that the “Are You the 33%?” campaign will employ to keep growing and amplifying its reach, including the engagement of new campaign partners, such as Bayer. Bayer will support the campaign by encouraging people in

Black or African American communities who are affected by type 2 diabetes to find out if they are also at risk for kidney disease. Their support will help drive traffic to the [MinuteForYourKidneys.org](#) microsite and further expand our efforts to reach those at risk.

We will kick off this phase of the campaign during Black History month in February with an African American celebrity spokesperson and robust media plan that will extend into National Kidney Month 2021 and beyond as we encourage patients to know their kidney risk and become their best health advocate.



COVID-19 has changed our financial goals and our fundraising plans for FY21. Stay tuned for the new, creative opportunities our team is launching in the coming year to raise urgently needed dollars across virtual platforms. It starts with the launch of **Kidney Walk LaceUp** – a new way to walk from the comfort and safety of your home or local park. **Kidney Walk LaceUp** is a movement of hope and health for all kidney patients, loved ones, and friends. As you are reading this, the movement has already begun nationwide. Throughout the season, walkers from all 50 states will hit the pavement in their own special way.

Every Kidney Walk – from Kentucky to California – is important and brings us one step closer to our shared purpose.

In FY21, we also launched a new DIY fundraising campaign, **Take 5, Give 5**, which encouraged people around the country to take a break from this period of isolation and uncertainty and do something they love as a way to raise urgently needed funds.

Take 5 will look different for every participant, but all will challenge their virtual community to “give 5” – \$5 to fund NKF’s lifesaving programs.

We also launched in FY21 NKF’s first-ever **#GivingTuesdayNow** campaign on May 5, a global day of giving back promoted as an emergency response to the unprecedented need caused

by COVID-19. The kidney community came out in support of this historic online effort, raising more than \$30,000 to keep NKF fighting for the health and safety of kidney patients and all who care for them.

Look for more details about these new fundraising efforts in next year’s annual report.

In FY21, we will launch the *Transplants for All* initiative, our ambitious plan that will be more than just aspirational. We want every patient, including those in underserved communities of color, with kidney failure to have a real expectation that they can get a kidney transplant. Transplantation is the best medical option for patients who have lost kidney function, and yet, too many patients are not even offered this treatment.

We know there are many reasons why and we know the answers will not be easy to find, but we are unwilling to postpone this work any longer, because in doing so, people are suffering. That is unacceptable.

We have already begun to organize our resources around finding solutions to increase the number of kidneys available for transplantation and increase the number of patients with access to a transplant.



“Latino and Black people in America are three times as likely to become infected with COVID-19 as their White neighbors and are twice as likely to die from the virus. We must end the systemic racism that underlies these statistics and protect our kidney patients now.”

.....

Kevin Longino, NKF CEO

We are expanding our platform that helps patients find a living donor, called **THE BIG ASK: THE BIG GIVE: Finding a Living Donor, from Home**, and will give more patients access to transplant than ever before. This program will connect potential transplant recipients to resources and a “navigator” to help them find the miracle of a kidney transplant.

Also, in the coming year, we are creating a **new grant program** to search for innovations and out-of-the-box ideas to eliminate discarded

kidneys from deceased donors, currently totaling about 3,600 a year that have been donated but never transplanted.

At NKF, we imagine a world where no one ever dies while waiting for a kidney transplant; where dialysis is truly used as a short bridge between kidney failure and transplantation; and where all 500,000 people currently on dialysis have access to a better, safer, more productive, longer life. We are starting FY21 with those goals front and center.



30 East 33rd Street
New York, NY 10016
[Kidney.org](https://www.kidney.org)

FUELED by passion and urgency, National Kidney Foundation is a lifeline for all people affected by kidney disease. As pioneers of scientific research and innovation, NKF focuses on the whole patient through the lens of kidney health. Relentless in our work, we enhance lives through action, education and accelerating change.

