



NATIONAL KIDNEY
FOUNDATION®



ANNUAL REPORT

FY22



Amy Hewitt
watch: [Why I Became A Living Donor](#)

TABLE OF CONTENTS

01	Message from Leadership	4
02	Kidney Disease/NKF Stats At-A-Glance	8
03	Action for Patients	12
04	Awareness and Early Detection	16
05	Innovation in Research & Education	18
06	Voices for Kidney Health	22
07	Our Financial Overview	24
08	Focus on the Local Community	36
09	On the Horizon in FY23	38

The pages within highlight NKF’s efforts between April 1, 2021 to March 31, 2022, our fiscal year 2022.

01 MESSAGE FROM LEADERSHIP



Paul M. Palevsky, MD
NKF President



Anthony Tuggle
NKF Chair of the Board



Kevin Longino
NKF Chief Executive Officer

WELCOME TO OUR ANNUAL REPORT FOR FISCAL YEAR 2022 (FY22).

As you scan through these pages, you'll see there's never been a more exciting time to be a part of NKF's mission. We completed our second year dealing with the effects of the pandemic and not only have we survived it, but we are stronger than ever. We advanced every single one of our objectives in FY22 and in some ways, we far exceeded even our own expectations.

This is all because of you, our patient and professional volunteers, members, and corporate and government supporters. Your hard work, your commitment, your focus, and collaboration drove us to a great place.

Perhaps the biggest takeaway from last year is how critical health equity is to the future of kidney care. Simply put, our society cannot fully address kidney disease until we, as a nation, fully address health equity in the United States. Nowhere was this more apparent to us than in our continued work around the estimated glomerular filtration rate equation, more commonly called the eGFR equation.

More than 37 million adults in the United States have kidney disease. A disproportionate number of those impacted are in communities of color. These communities also face unacceptable health disparities and inequities in healthcare delivery. NKF saw a need for change.

Prior to our work the eGFR equation included age, sex, race and/or body weight to approximate directly measured kidney function. However, race is a social, not a biological, construct and at the end of the previous fiscal year NKF worked with the American Society of Nephrology to roll out a new eGFR equation. The kidney care community took notice and throughout FY22 we worked with health partners and government entities to promote broader adoption of this new measure.

And we're finding success. In February, the United States Pathology and Laboratory Society Leadership endorsed the new eGFR equation. Other groups are following suit and research has begun that will quantify how this new formula is making a difference.

For us, this success is a sign of two things. First, health equity needs to be at the center of our mission. Merely changing an equation is not enough. A commitment to equity needs to shape and influence everything we do so we can finally start to fully address the root causes of the kidney disease public health crisis. Second, it re-enforced to us the critical role that NKF must play.

NKF is a respected leader with a long history of saving lives. That credibility puts us in a unique position to bring together people from across a broad spectrum. Medical groups, advocates, lawmakers, corporations, professional organizations and more all look to NKF for leadership. We can guide and influence conversations to create change, break down barriers and refocus kidney care on strategies that will ultimately save even more lives faster.

Like you, we've all been touched by kidney disease in some way and, like you, this fight is very personal for everyone at NKF. This report documents how we've taken that passion and turned it into progress. We appreciate your support and generosity, and by the time you've finished reading these pages, we know you'll agree with what we said at the beginning of this message—there's never been a more exciting time to be part of NKF's mission.

Thank you.

INTRODUCING THE NKF BOARD

Year after year, each class of the NKF Board of Directors has served with a personal connection to kidney disease.

Manish Agarwal
President, COO
Attain, LLC
McLean, VA
Personal connection: Mr. Agarwal is a transplant recipient, passionate about kidney health, and actively serves the NKF Serving the National Capital Area as Chair of the Board.

Hubert L. Allen
Executive Vice President,
General Counsel, Secretary
Abbott
Chicago, IL
Personal connection: Mr. Allen suffered from acute kidney injury and was treated with dialysis. His kidneys regained function while he developed a passion for helping others.

Anne Barr
Chief Information Officer
Sutter Health- Bay Area
Bay Area, CA
Personal connection: Her engagement with NKF began as part of her passion for kidney transplantation when a close friend became a kidney donor.

David J. Cook, MD
Senior Vice President
Optum Labs
Minnetonka, MN
Personal connection: Dr. Cook lost his father in 2019 to kidney disease and witnessed the struggle of kidney patients during his two decades in an ICU practice.

Matthew Cooper, MD
Director Kidney and Pancreas Transplantation
Medstar Georgetown Transplant Institute
Professor of Surgery
Georgetown University
School of Medicine
Washington, D.C.
Personal connection: Dr. Cooper’s work with NKF is centered on improving the lives of people with CKD and supporting organ transplantation for those with kidney failure.

Joseph Cosgrove
Chairman, President, CEO
Pentec Health, Inc.
Boothwyn, PA
Personal connection: Mr. Cosgrove’s mother-in-law and his best friend have CKD.

Jennifer DaSilva
President
Berlin Cameron
New York, NY
Personal connection: Ms. DaSilva knows that awareness is just part of the battle against the progression of kidney disease, so she is driven in her efforts to help spread NKF’s messages.

John Gerzema
Immediate Past NKF Chair
CEO
Harris Insights & Analytics
New York, NY
Personal connection: Mr. Gerzema experienced kidney damage as a child.

Renee Gosline, PhD
Senior Lecturer
Principal Research Scientist
MIT Sloan School of Management,
MIT’s Initiative on The Digital Economy
Manchester, MA
Personal connection: Dr. Gosline was diagnosed suddenly with kidney disease as a young academic, despite having no family history.

Orlando Hampton
Chief Customer Officer
Afiniti, Inc.
Washington, D.C.
Personal connection: Mr. Hampton’s personal connection to kidney disease began when his stepfather’s kidneys failed due to a deteriorating condition that led to dialysis.

Tom Hough
Financial Consultant
Board Member
Bain Capital Specialty Finance
Plano, TX
Personal connection: His daughter received her first diagnosis of kidney stones at age nine. He joined the local NKF board to learn more about kidney disease and to help others deal with kidney disease.

Holly Kramer, MD, MPH
Immediate Past NKF President
Loyola University Medical Center
Maywood, IL
Personal connection: She is a second-generation kidney healthcare professional, dedicating her life to improving outcomes for people with this disease.

Kevin Longino
CEO
National Kidney Foundation
New York, NY
Personal connection: He is a kidney transplant recipient, and son and grandson of kidney patients.

Samuel J. Marchio
NKF Secretary
Regional Vice President
Federal Government Relations, Head of Congressional Affairs, Anthem, Inc.
Washington, D.C.
Personal connection: He is passionate about kidney health, public health, and fundraising.

Tracy McKibben
Founder, CEO
MAC Energy Advisors, LLC
New York, NY
Personal connection: Ms. McKibben donated a kidney to her mother, who was on dialysis for several years.

In Memoriam:
Alan Mendelson
Retired Senior Partner
Latham & Watkins LLP
Atherton, CA
Personal connection: He experienced first-hand the effects kidney failure can have on people, watching his friends suffer from kidney failure.

Paul M. Palevsky, MD
NKF President
Professor of Medicine
University of Pittsburgh
School of Medicine
Chief, Renal Section
VA Pittsburgh Health System
Pittsburgh, PA
Personal connection: Dr. Palevsky has devoted his career to kidney health and is an international expert in acute kidney injury and critical care nephrology.

Art Pasquarella
CRE, EVP, and COO
Equus Capital Partners, Ltd.
Philadelphia, PA
Personal connection: He is a living donor, and two of his immediate family members have received kidney transplants.

Stephen Pastan, MD
Associate Professor of Medicine
Division of Transplantation
Medical Director
Kidney and Pancreas Transplant Program
Emory University School of Medicine
Atlanta, GA
Personal connection: He chose nephrology as a career for the long-term personal relationships he could form with patients.

Sylvia Rosas, MD, MSCE
NKF President-Elect
Nephrologist, Epidemiologist,
Director, Latino Kidney Clinic
Joslin Diabetes Center, Inc.
Associate Professor
Harvard Medical School
Boston, MA
Personal connection: She has dedicated her career to the care, the cause, and support of kidney patients

Alison Steiber, PhD, RDN
Chief Science Officer
Academy of Nutrition and Dietetics
Chicago, IL
Personal connection: Dr. Steiber is passionate about the impact that nutrition can have on the health outcomes of patients with kidney disease.

Michael J. Stevenson, CPA
Director
Blue & Co., LLC
Columbus, OH
Personal connection: After getting his diagnosis of glomerulonephritis, Mr. Stevenson received a kidney from his brother, Jim, in 1996, and has been a champion of trying to raise awareness about CKD and, ultimately, trying to find a cure.

Stephanie Stewart, MSW, LICSW, MBA
Operations Administrator
Mayo Clinic Health System
Mankato, MN
Personal connection: Ms. Stewart cares about improving the lives of people with CKD. Many of the individuals, mostly patients, with whom she has worked have touched her life in very personal ways.

Sumeska Thavarajah, MD
Medical Director
Fresenius Kidney Care Merritt Boulevard
Assistant Professor of Medicine
Johns Hopkins Bayview Medical Center
Baltimore, MD
Personal connection: She has been committed to education and dedicated to bringing community awareness of kidney disease through her work with NKF Serving Maryland and Delaware.

NATIONAL STAFF

Kevin Longino
Chief Executive Officer

Petros A. Gregoriou, CPA
Chief Financial Officer

Christopher Jackson
Chief People Officer

Dolores Machuca-Ruiz
Chief Marketing Officer

Joseph Vassalotti, MD
Chief Medical Officer

Kerry K. Willis, PhD
Chief Scientific Officer

Anthony S. Gucciardo
Senior Vice President
Strategic Partnerships

Jessica Joseph, MBA
Senior Vice President
Scientific Operations

Sharon Pearce
Senior Vice President,
Government Relations

Maureen Stone
Senior Vice President,
Development

Denise Andersen
Regional Vice President
Northeast

Brenita Brooks
Regional Vice President
Central, Texas, Midwest

Susan Ketron, CFRE
Regional Vice President
Resource Development
Southeast, West

Stephanie Cogan
Vice President
Corporate Relations

James Echikson
Vice President
Corporate Development

Andrew Gordon, CPA
Vice President
Finance and Controller

Rasitha Herath
Vice President
Digital Customer Experience

Katarina E. Madej
Vice President
Digital Marketing

Jen Martin
Vice President
Program Development

Paul McGee
Vice President
Marketing and
Communications/
Public Affairs

Elizabeth Talbot-Montgomery
Vice President
Learning Strategies and
Primary Care Programs

KIDNEY DISEASE AT-A-GLANCE

1 IN 3 ADULTS
in the U.S. are at risk for CKD.



37 MILLION
adults in the U.S. have CKD.

35% OF ALL PATIENTS
with kidney failure are Black/African American, even though this group is 13% of the U.S. population.



HISPANIC/LATINO AMERICANS
are **1.3 times** more likely to develop kidney failure than non-Hispanic Americans.


BLACK/AFRICAN AMERICAN
people suffer from kidney failure more than 4 times the rate of White people.

ABOUT 100,000 PEOPLE
are on the waitlist for a kidney donation.
Source: UNOS



24,670 PEOPLE
received a kidney transplant in 2021.
Source: UNOS

5,971 PEOPLE
received a kidney from a living donor in 2021.
Source: OPTN/HRSA



12 PEOPLE
die each day while waiting for a kidney transplant.
Source: UNOS

1 IN 5 KIDNEYS
donated by deceased-donors are discarded.
Source: Transplantation 2017



60% OF ALL ORGAN
transplants were kidneys in 2021.
Source: UNOS



NKF STATS AT-A-GLANCE

40 VIRTUAL

THE BIG ASK: THE BIG GIVE®
trainings offered in 13 States
in FY22

5 ONLINE
COMMUNITIES

for kidney patients, with
14,517 members



30,000
CLINICIANS

educated by continuing
education (CME/CE) activities

150
CME/CE

activities in FY22



5,500

NKF Professional Members

220 ADVOCATES

representing 42 states attended the
2022 Kidney Patient Summit in
Washington, D.C.

.....

27,400+
ADVOCATE
MESSAGES

delivered to state and federal
lawmakers in support of our
Voices for Kidney Health agenda



NKF PATIENT
NETWORK

More than 1,500 enrolled participants

- 58% women
- 78% aged 50-79
- 19% had a kidney transplant
- The five stages of CKD represented
- 15% on dialysis



KIDNEY.ORG IN FY22

25.5
MILLION

users on kidney.org

44
MILLION

page views on
kidney.org

TOP 3 PAGES:

- 10 Signs You May Have Kidney Disease
- GFR Calculator Tool
- Estimated Glomerular Filtration Rate page

39.9
MILLION

unique page views
on kidney.org



\$65.2 MILLION

raised for NKF efforts

6.2 BILLION

media impressions of NKF content in FY22

10.1 MILLION

Facebook impressions of NKF content in FY22

3.3 MILLION

Twitter impressions of NKF content in FY22



263,000
FACEBOOK
followers



39,800
TWITTER
followers



41,100
INSTAGRAM
followers



27,000
YOUTUBE
subscribers



27,600
LINKEDIN
subscribers

WHAT'S NEW

ADVANCING NKF'S LEADERSHIP IN HEALTH EQUITY

Confronting disparities in healthcare based on race and ethnicity is critical for NKF. Our most important work can and should be the positive impact we make in the most vulnerable of our communities. This is a foundational commitment to narrow the gap of health disparities and ensure equitable outcomes among communities of color. It is a central pillar of our core mission as an organization.

NKF ASN Task Force Recommendations—In September 2021, we recommended the adoption of the new race-free eGFR CKD-EPI Creatinine Equation (2021). The task force also recommended increased use of cystatin C combined with serum (blood) creatinine, as a confirmatory assessment of GFR or kidney function. This was an important step forward in ensuring health and healthcare equity.

Integrating Diversity, Equity, and Inclusion (DEI) into All We Do—NKF believes our workforce needs to reflect the people we serve. In FY22, NKF leadership demonstrated their commitment to ensure DEI is fully ingrained into everything we do. DEI Enterprise Goals have been established for our senior leadership team. We've also established a permanent, internal NKF DEI Committee to review our culture, vendor selections, internal communications, hiring, and promotions.

Kidney Health Equity Community Engagement Award—In FY22, we introduced a grant program that aims to end kidney health inequities at the local, community level. The program aims to address the disparities that drive inequity in kidney healthcare. The first grant awards will be announced in FY23.

ENHANCED PROGRAMS FOR PATIENTS AND LIVING DONORS

NKF is dedicated to preventing kidney disease, improving the health and well-being of individuals and families affected by kidney disease and increasing the availability of kidneys for transplantation. Throughout FY22, we forged new alliances and partnerships to improve and enhance the free education and support programs we provide to both donors and patients.

PEERS Mentorship Expansion—In December 2021, we partnered with the National Kidney Registry (NKR) to provide mentorship support to people considering becoming living donors. NKR registrants are now connected with mentors through the NKF PEERS program. NKF PEERS mentors are people who have donated a kidney and have been specially trained by NKF to help guide others through the donation process and recovery. Through this program, NKF added more than 3,000 kidney donor registration forms to the NKR last year.

NKF Patient Network Expansion—In March 2022, we rolled out an expansion of our patient network for people with Alport syndrome, a rare genetic kidney disorder. This free service gives patients with Alport syndrome the tools they need to help manage their condition.

THE BIG ASK: THE BIG GIVE® (BABG) Patient Navigators Program—NKF joined forces with DaVita® Kidney Care in June 2021 to launch a new patient navigation program, connecting people who have had a living donor transplant with people considering starting the process of looking for a living donor.

Innovate Kidney Care Campaign—Also in June 2021, NKF teamed up with eight other leading health organizations to launch the Innovate Kidney Care Campaign. The campaign calls on the Centers for Medicare and Medicaid Services (CMS) to modernize the End-Stage Renal Disease (ESRD) Conditions for

03
ACTION FOR PATIENTS

The National Kidney Foundation (NKF) is setting a new standard in both kidney care and healthcare (more broadly), by leading a movement focused squarely on addressing disparities in kidney health—across the continuum of care. We are passionate about kidney health for ALL and bold in our approach to achieving it. Here are highlights from FY22 of our newest efforts on behalf of patients:

Coverage and related guidelines to improve patient outcomes, patient experience, and healthcare practitioner experience, and lower costs of care. Last winter Innovate Kidney Care released a roadmap to the CMS to change its Conditions for Coverage for healthcare organizations to receive Medicare funds, and to remove patients' financial barriers to home dialysis.

FIGHTING THE COVID-19 PANDEMIC

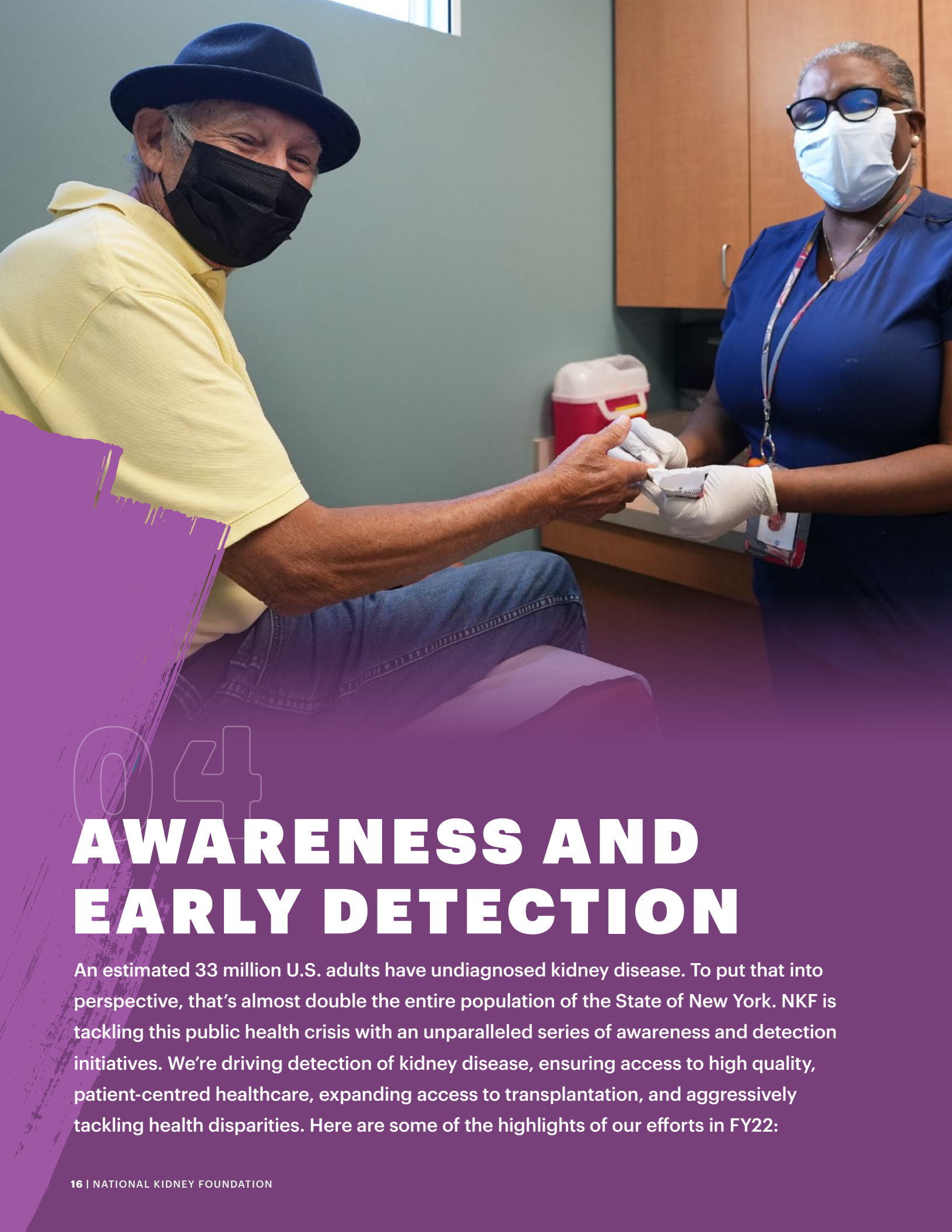
We continued to be here to support and **listen to you during the COVID-19 outbreak**. Last year, NKF helped kidney patients and their families find answers to the most common questions and stay informed about the latest coronavirus developments.

COVID-19 Guidance and Resources on Kidney.org—Since the beginning of the pandemic, NKF has been a critically important online destination for kidney patients and their families. Millions of people rely on our website for the latest research and health information on COVID-19 and kidney disease.

Advocating for Kidney Patient Safety—NKF advocated for continued care and protection of patients in dialysis centers, and prioritization of vaccines for kidney patients. Our work led to the Centers for Medicare and Medicaid Services (CMS) requiring all employees in the more than 7,500 dialysis centers in the U.S. to be vaccinated.

Cutting-Edge Research—During FY22, NKF's award-winning medical journal the *American Journal of Kidney Diseases* published nearly two dozen articles and new research studies on COVID-19 and kidney disease.





04 AWARENESS AND EARLY DETECTION

An estimated 33 million U.S. adults have undiagnosed kidney disease. To put that into perspective, that's almost double the entire population of the State of New York. NKF is tackling this public health crisis with an unparalleled series of awareness and detection initiatives. We're driving detection of kidney disease, ensuring access to high quality, patient-centred healthcare, expanding access to transplantation, and aggressively tackling health disparities. Here are some of the highlights of our efforts in FY22:

WHAT'S NEW

Leading the Charge in Public Education and Early Detection

NKF continues to drive early detection through innovative awareness campaigns, shining a brighter light than ever before on the growing public health crisis of kidney disease. By increasing awareness and knowledge, we work to connect kidney health to overall health in the public mindset. Our resources promote kidney health in ways that are culturally relevant.

Growth of "Are You the 33%?" Campaign—Last March, NKF marked National Kidney Month with the expansion of our single most impactful awareness campaign yet—Are You the 33%? More than 50,000 NKF Kidney Risk quizzes were completed on our **MinuteForYourKidneys.org** website. Our recruitment outreach for the program resulted in a 17 percent positive conversation rate which is far above industry averages.

- **NKF Goes Viral**—NKF partnered with actor and activist Wilmer Valderrama to develop awareness videos in both English and Spanish which gained more than 1 million views on YouTube.
- **Expanding Our Audience in Digital and Social Media**—We saw significant audience increases across all our digital media platforms in FY22. In fact, FY22 saw a 226 percent increase in our reach over FY19. Our YouTube channel led the way with a 451 percent increase in subscribers, versus the previous year.

Building Awareness with Best-in-Class Partnerships

As a recognized leader and impassioned activist for kidney health, NKF is in the unique position to bring key stakeholders together in support of our mission. Our partnerships and collaborations included:

- **Labcorp Patient Study**—In August 2021, NKF partnered with Labcorp on a study that revealed millions of people who are most at risk for kidney disease are not getting the recommended testing

by their primary care physicians. With this real-world evidence we can better shape educational tools for primary care physicians on the importance of annual testing of at-risk patients.

- **American Academy of Family Physicians**—NKF Chief Medical Officer Joseph Vassalotti, MD, and award-winning actress Debbie Allen joined forces at the September 2021 American Academy of Family Physicians National Conference. Together they promoted the importance of annual testing in a presentation to thousands of primary care physicians.
- **Innovate Kidney Care**—NKF partnered with eight other leading healthcare organizations to launch the Innovate Kidney Care campaign. Major brands such as CVS Kidney Care, Anthem, Inc. (now Elevance Health, Inc.) and the American Society of Nephrology (ASN) developed the program to improve patient options for receiving home dialysis training and support. Innovate Kidney Care's diverse group of industry organizations aimed to advocate for the Centers for Medicare and Medicaid Services (CMS) to modernize the End-Stage Renal Disease (ESRD) Conditions for Coverage and related guidance in order to achieve the quadruple aim of better patient outcomes, improved patient experience, improved health care practitioner experience and lowered costs of care.
- **Elongate**—The world's largest, first-ever charity cryptocurrency launched in May 2021, raising funds and awareness with the growing audience of crypto investors. A collaboration with NKF illustrated both organizations' commitment to increasing awareness about the disproportionate impact kidney disease has on communities of color.

05 INNOVATION IN RESEARCH AND EDUCATION

The National Kidney Foundation (NKF) worked closely with professionals across the kidney care spectrum stay connected with advances in nephrology to help improve patient outcomes. We publish cutting-edge research, provide innovative continuing education resources, and bring thousands of professionals together for our annual NKF Spring Clinical Meetings. Here's a sample of the work NKF completed in FY22 to ensure professionals have the information they need to advance their work:

WHAT'S NEW

RESEARCH

NKF continues to be a pioneer of scientific research and innovation in kidney health. Our work helped lead to advances in detection, treatment, and overall understanding of kidney disease and other related conditions.

- **NKF Professional Medical Journals**—Finding and publishing research on new discoveries is critical to advancing our mission. NKF publishes five distinct medical journals on kidney healthcare that are “go to” resources for researchers and other medical professionals. For example, in FY22 the *American Journal of Kidney Diseases* was cited more than 7,000 times in other publications and had an average of more than 100,000 visitors per month. Our full compliment of medical journals last year included:

- » *American Journal of Kidney Diseases (AJKD)*
- » *Kidney Medicine*
- » *Advances in Chronic Kidney Disease (ACKD)*
- » *Journal of Renal Nutrition (JRN)*
- » *Journal of Nephrology Social Work (JNSW)*

- **NKF Patient Network Celebrates Milestone**—In February, we celebrated the one-year anniversary of the NKF Patient Network, first nationwide registry for people with all stages and types of kidney disease, developed to transform kidney care and research. By sharing health data and life experiences, participants help expand knowledge of kidney disease for scientists, doctors, and researchers. This data will inspire and inform research for years to come and will improve what

is known about kidney disease and how it affects people's health and lives. Last year, we recruited more than 1,200 participants from 47 states, representing all five stages of chronic kidney disease (CKD). This work also made the nephrology world take notice. Our Patient Network was featured at the American Society of Nephrology's 54th annual meeting and scientific exposition. That discussion alone earned more than 1,000 unique media mentions with an audience reach of more than 34 million. It's a strong start for this exciting program and we anticipate even more growth moving forward.

- **NKF Research to Help Shape Government Policy**—In August 2021, we convened an Externally Led Patient-Focused Drug Development (EL-PFDD) meeting in partnership with Nephcure Kidney International®. This partnership gave patients with a rare condition, known as membranous nephropathy (MN), a voice before the U.S. Food and Drug Administration (FDA). The intention of this work was to guide the federal government in making decisions about future drug treatments. This was the fifth such meeting NKF hosted for the FDA and is an important step to assist policymakers understanding of how patients deal with rare kidney diseases. More than 100 people participated in the virtual gathering.

AIDING PROFESSIONALS

We play a critical role in accelerating change through ensuring medical and other professionals have access to the ever-changing science around kidney health. Whether it is in-person or online, NKF members receive a wide range of resources, tools, and continuing medical education to help professionals improve their practices and knowledge.

- **Annual NKF Spring Clinical Meetings**—For 29 years, our NKF Spring Clinical Meetings have been the annual destination for nephrologists, researchers, social workers, and other kidney health professionals. The event has become world-renowned and continued to grow in FY22. Almost 200 presentations, lectures, and classes were offered to the nearly 3,000 registered participants. “Spring Clinicals” has also become an incredible opportunity for researchers to share their latest work and findings. Among last year’s highlights:
 - » Health equity research that identified disparities in kidney transplantation between White men, White women and Black/African American women.
 - » In a separate study, researchers found the use of race as a variable in the eGFR calculation has adversely affected Black/African American patients with underdiagnosis of kidney disease.
 - » Investigators announced anemia is increasing in patients with kidney disease, a trend that will increase the number of blood transfusions needed, which could adversely affect future kidney transplantation.
 - » Two studies presented showed investigations of how COVID-19 has affected people with kidney disease. One concluded that vaccines were effective for patients on dialysis. The other surprised investigators because it showed a dramatic reduction in kidney care during the pandemic.

- **Kidney Disease Outcomes Quality Initiative (KDOQI®)**—For two decades, NKF’s KDOQI has been a driving force behind some of the treatment recommendations doctors use every day for kidney care. In FY22, the initiative conducted an exhaustive review of two sets of Kidney Disease Improving Global Outcomes (KDIGO®) recommendations. Findings for both treating patients with diabetic kidney disease and for managing blood pressure for people with kidney disease were published in our journal *AJKD* and reached more than 2.5 million people worldwide.
- **Continuing Education Kidney Commute Podcast**—The landscape of medicine is changing and so, too, is the way kidney care professionals conduct their continuing education. In FY22, NKF launched a new continuing education Kidney Commute Podcast to make the CME process more convenient and accessible for our members.
- **Project ECHO® Home Dialysis**—Last year, we also launched a pilot program in tele-mentoring in partnership with 30 Comagine Health dialysis centers. They reported a 73 percent increase in home dialysis as a result of the project. It’s another proof point demonstrating how Project ECHO’s “all learn, all teach” approach has made a difference.



Kidney Commute Podcast

06 VOICES FOR KIDNEY HEALTH

Voices for Kidney Health® is a community of people with kidney disease, living donors, kidney care professionals, care partners, and volunteers who work with public leaders to advance policy initiatives that help those facing the challenges of kidney disease. Together, we advocate for policies that will help prevent and delay kidney disease, ensure quality care for patients with kidney failure, and make certain that everyone who wants a transplant can get one.

WHAT'S NEW

- In FY22, NKF launched Voices for Kidney Health, a nationwide network of kidney community advocates who champion policy advances in kidney health. NKF empowers Voices advocates by sharing resources, seeking and incorporating input on our policy agenda, and amplifying personal stories to illustrate the urgency behind our legislative goals. In its first year, Voices advocates generated more than 23,000 letters to federal, state, and local policymakers, collected 2,778 signatures on a petition calling for prioritization of at-risk kidney community members for COVID-19 vaccinations, and registered almost 1,000 new advocates to join the fight.
- In FY22, thanks to NKF Voices for Kidney Health advocates, eight more states passed a living donor protection act, legislation that protects people from insurance discrimination after they have donated a kidney. To date, 28 states have passed LDPA's to ensure that living donors aren't penalized for giving the gift of life.
- More than 220 Voices for Kidney Health advocates from across the country virtually attended our ninth annual 2022 Kidney Patient Summit. Advocates shared their firsthand experiences as kidney patients, living donors, and care partners with those who can change policy and support legislation that advances kidney health.
- Our community's ongoing efforts to increase funding for federal programs that promote awareness, education, and research, resulted in a \$1 million increase for the Chronic Kidney Disease (CKD) Initiative program at the Centers for Disease Control and Prevention (CDC).
- NKF also continued to advocate with federal regulators to advance policies that promote early screening, diagnosis, and management of CKD, address barriers to home dialysis, increase access to transplantation, improve health access and affordability, and other priorities. We submitted more than 15 official comment letters and met with key policymakers at the Centers for Medicare and Medicaid Services (CMS), the Health Resources and Services Administration (HRSA), the CDC, and other agencies to ensure that kidney patient voices were heard.
- Thanks to NKF advocacy, the Kidney Evaluation for Diabetes Measure was included in the CMS' Measures Under Consideration, an integral step in the process to finalize adoption of the measure.
- Throughout FY22, we continued to advise policymakers, agencies, and others on how kidney patients would be affected by COVID-19 guidelines on masks, vaccines, and back-to-the-office rules, and on guidelines for immunocompromised people. In May 2021, we urged the CDC to study boosters for immunocompromised patients and urged kidney community members to continue to wear masks regardless of their vaccination status. We are committed to being the voice of kidney patients about COVID-19 for as long as our nation is dealing with this virus.





07

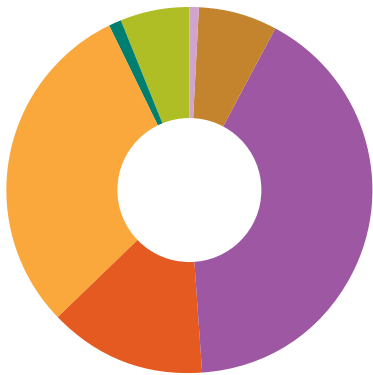
OUR FINANCIAL OVERVIEW

Thousands of people like you around the country have given their time, talents, and treasures all year to raise millions to fund important work led by NKF. After COVID-19 hit the world, our mission became more important and critical than ever before, which is why we are so thankful for our many patrons who have continued to support kidney patients.

AUDITED FINANCIALS FOR NKF WITHOUT AFFILIATES — FY22

All figures are in thousands.

PUBLIC SUPPORT AND REVENUE



- 7% Other Income \$3,580
- 41% Contributions \$19,923
- 14% Net Special Events \$6,903
- 30% Program Service Fees \$14,845
- 1% Government Grants \$539
- 6% Professional Memberships & Subscriptions \$3,185
- 1% Net Investment Income \$564
- 100% Total Income \$49,539**

EXPENSES



- 10% Management and General \$3,750
- 9% Research \$3,375
- 12% Public Health Education \$4,531
- 31% Professional Education \$12,008
- 12% Patient Services \$4,626
- 22% Community Services \$8,771
- 4% Fundraising \$1,606
- 100% Total Expenses \$38,667**

Assets

Cash and Cash Equivalents	\$18,096
Investments	\$21,900
Receivables	\$1,992
Inventories of Educational and Campaign Material	\$121
Prepaid Expenses	\$2,109
Property, Plant and Equipment (net)	\$606
Other Assets	\$4,458
Total Assets	\$49,282

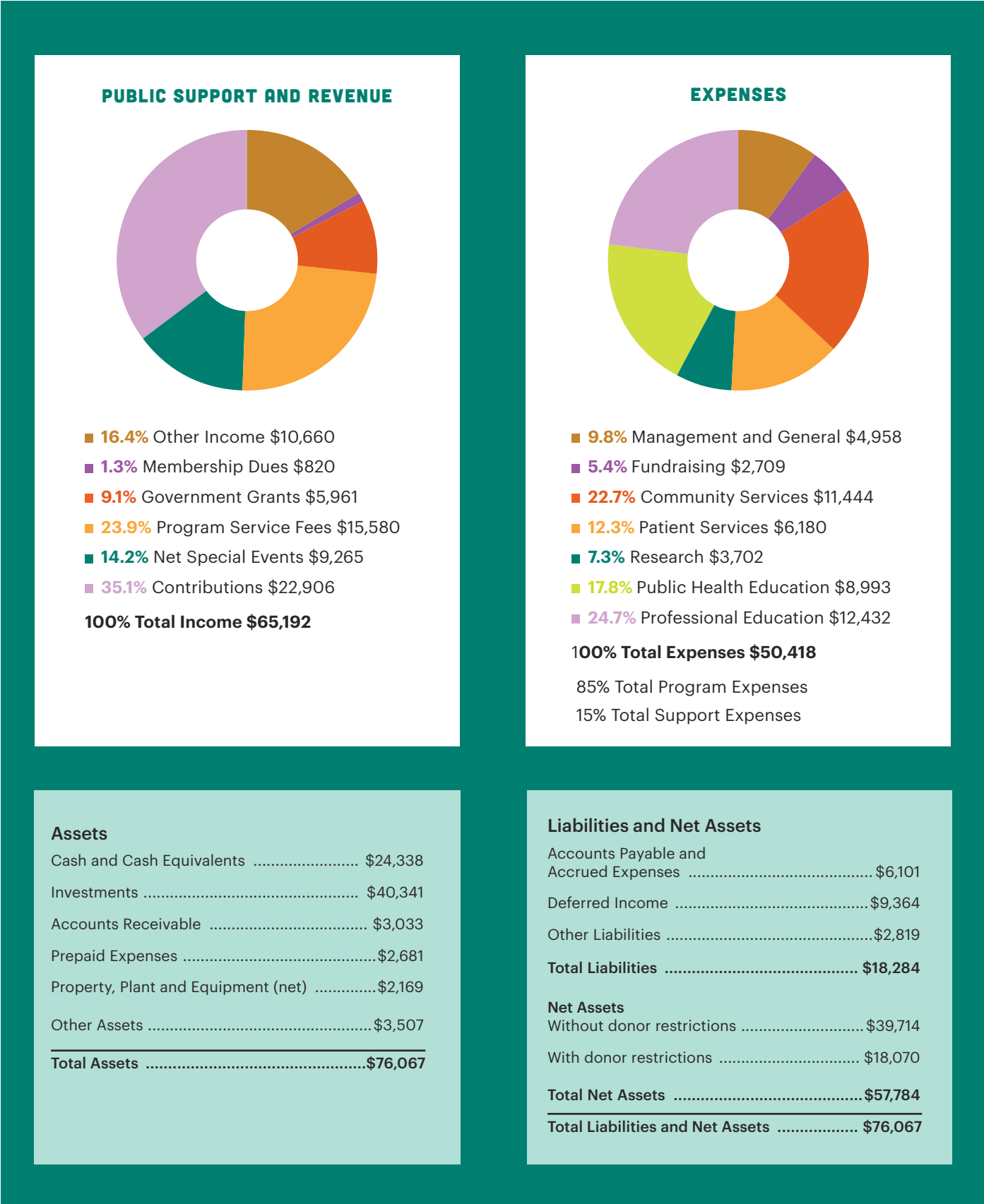
Liabilities and Net Assets

Accounts Payable and Accrued Expenses	\$7,269
Deferred Income	\$8,969
Other Liabilities	\$155
Total Liabilities	\$16,393
Net Assets	
Without donor restrictions	\$21,833
With donor restrictions	\$11,056
Total Liabilities and Net Assets	\$49,282

View the complete [National Kidney Foundation FY22 financials](#)

COMBINED FINANCIALS FOR NKF AND AFFILIATES — FY22

All figures are in thousands.



INDIVIDUAL SUPPORTERS

\$1,000,000+ Art and Gail Pasquarella*	Ward Richter Lon Rubackin* Bill and Judy Singleton* Vivian Sobolewski* James Taratoot* Todd Taylor Mark Testoni* Sumeshka Thavarajah, MD* Anthony Tuggle* Phyllis Tutty Gary Walljasper Elizabeth H. Wong*	Brooke Heckman Roberta Hensley Steven Herman Kim Huch Jennifer Jermak Janice Johnsen Lisa Jolliff Jimmy Jones Reinetta Dee Jones* Kathy Joslin Debi and Panos Kalaritis Holly Kramer, MD* Christina Lankhorst* Donna Litt* William Litt* Frances Mangan* Rekha Mankad Virginia Mann Gail Marie Harvey Masonson Annetta McAninch Bobbie McCarty Sandra Mehalic Todd Mercer Dr. Dirk Miller and Jennifer Cramer-Miller Steven Moll Donald Molony* Everlena Moore Ramsey Nassar, MD Jason Nefs* Ricki Nelson Susan Olney Norm Ostasiewski Tumetris Ousley Robert Palazzo Paul Palevsky, MD* Christina Panay Emmet Peppers* John Pilmer Christy Anne Piper Beth Piraino, MD* Joe Reeves Jean Rhodes* Lewis Rhodes Brooke Richman Colette Rogers Jason Rorrer Sylvia Rosas* Bebe Samatalie Linda Scholting Alfred Shapleigh	Amit Sharma Kenneth Shepard Mawya Shocair* Ray and Anne Shrock Charitable Fund Inderjit Singh Kathryn and Matthew Singleton Mike Smith Mike Stevenson* Susan Thrope* Christopher Tormey Cory Treharn Karen Tubridy James Veritas Paul Walnick Bradley and Barbara Warady Jeremiah Watson Lisa Weber George Wedd Deborah and Michael West Jon Wilkins, Esq. Michael Zaprzalka	Ronald Alston Lloyd Alterman* Joseph Alvin Jefferson Amacker* Usha Amin* Dan Amodeo Christopher Amweg Larry Andereg Denise Andersen Angie Anderson* Pamela K. Anderson Todd Anderson William Anderson Donald Andre George Andrew Alvin Ang* Penny Ann Joseph Antonelli Charles Appich Kari Arnold Andrew Arpagian Theresa Arvidson* Lauren Asghari Dawn Ashley Brian Asman* Mandi Atkinson Margaret Aurand Crystal Austin Daphne Austin Magda Aylor Alice Baia Stacy Bain Mike Baker Gerald Balonek Matthew Bame Hassan Bandele Candace Bannister Jacqueline Baranowski Jason Barber Willie Barber Lauren Barbir Lesha Barbus Anne Barker Teresa Barnes Fred Barnhill Anne Barr and Fred Matteson Mara Barreiro Ronnie Barrier Karla D. Barry
\$250,000+ Kevin Longino and Mary McDowell* Kip Palmer		\$5,000–\$9,999 Bruce Adelsberger* Mohamed Ali Robert and Judy Aptekar Keith Arnold Michael Baker Lyster Bass John Beuerlein Duane Boring Steven Breiner David Brem Edwin Brooks John Buys Denise Campbell Ellen Campbell* Rebecca Chorens Greg Clark James Clenny Scott Colonna Susan Conley Robert Crawford Alfred Deleon Steven T. Doherty Catherine Donnelly Tracy Douglas* Helen Drexler* Peggy Dunn John Edwin Mike Ernest Jhon Farrell Eliot Fishman* Zach Gifford Gaetano Giordano* Susan Green Denise Grover Scott Hagele Anna Hayden Kathleen Headlee*	\$1,000–\$4,999 Ketaki Abhyankar George Abou-Ezzi* Paul Abraham Barbara Abu Jennifer Accumanno* Chris Acker Shari Acker Ronald Ackerman Mike Acra Bill Adams Catherine Adams Dylan Adamson Sarah Addis Edward Adelstein Manish Agarwal* Stewart Ain Kofi Akyianu David and Caryn Alagno* Faustino Alcoy Bibi Ali Jeffrey Allard Everette Allen Charles Alley Jason Allmond Linda Allmond Yaser Alsolaiman	
\$150,000+ Barbara and Walter Parkes		\$24,999–\$10,000 Anne Barr* Matt and Penina Barr* The Bartel Family* George Bookman Tammy Brooks* Tom Browne* Barry Corona* Kathleen Dentino* John Dudinsky Sandra Francis* Daniel Garth John and Mary Gerzema* Isabel Grable* Ken Hamilton* William Harry Gordon Heuser * Kishor Kanabar Adam Kazalski Michael King Doug Kumm Kyle MacDonald Samuel Marchio* Tracy McKibben* Alan and Agnès Mendelson* Barbara E. Miller Joseph and Kelly Mullen* Claudia Queally		
\$25,000–\$55,000 Joseph Carlucci* William and Martin Dessoﬀy* Fred E. Hatch, Jr. Fund* Carol and John O’Neil* Ron and Joy Paul* Lise Strickler and Mark Callogly* Michael and Tiffanee Watts*				

* **Hero Circle supporters:** Hero Circle Members are individuals who invest in the National Kidney Foundation with an annual gift of \$1,000+. These gifts exclusively support our annual fund which provides important, unrestricted resources that help us advance our mission and values.

OUR FINANCIAL OVERVIEW

Carol Barton*
Diana Barton
Edward Barton
Janet Barton
Cynthia Basil
The Bastien Foundation*
Chris Batterton*
Anthony Beall
Stacy Beardslee
Rayner Beattie
Laurence Beck*
Amparo Becker
Sacheen Bell
Todd Bellefeuille*
Chuck Bellock
Chris Bemis
Paul Benson*
Sarah Benta
Glenda Bentley
Rosanna Berardi
Alisa Berger*
Marty Bergsrud
Ronit Berkovich
Gretchen Berlin*
Leslie Berman
Lewis Berns
Reginald Berry
Justin Bertrand
John Beurerlein
Mark Bezos
Geraldine Biddle
Jessica Bier
Richard Biggs
Harry Bigley
Marvin Birt
Michael Blow
Michelle Bodziak*
Thipyen Bogardus*
Edwin Bogusz*
Ida Bohannon
Margaret Bohl
Eunice H. Boles
Jim Bolinger
M. Joel Bolstein, Esq.
Sam Bolstein
Yasmine Bonilla*
James Borgelt
Linda Boris
Sharon Borsits
Jeffrey Botnen*
Molly Boudreau*
Nathan Bowman*
David Boyd*
Rick Braden
Florence Braff*

Sheila Branciforte
Lester Branson
Mark G. Brauning
John Braunscheidel
James Bremer
Matthew Brian
Carl Bridenbaugh
Hyecinth Bridges
Tina Brighton
Doug Britton
Mary Broas
Dusty and Missy Broderick*
Michael Bromberg
Ryan Brouwer
Michael Brower*
Eric Brown, MD
Sarah Brown
Teresa Brown
Thomas Brown
Tracy Brown
Jeanne Browning
Karen Brownlow
Yehudah Buchweitz
Jonathan Buck
Robert Buck
Timothy Buckley*
Tamara Bujakowski
Damien Bullard
Katherine Burke
Thomas Burkes
Arenilla Bush
Gretchen Buzzell
Molly Cahill
Myriah Cain
Devon Callaghan
George Campbell
Lydia Campbell
Shawn Campbell*
Darcie Campo*
Brenda Cannady
Jay and Neil Cannell
Carey Capell
Peggy Capotosto
Jim Carallo
Richard Carlton
Alice L. Carpenter
Roessa Carswell
Brad Carter
John Casilio
Bernard Cass
Fred Cassle*
Richard Cauffiel
Douglas Cecil
Aileen Celentano

Usha Challa
John Chambers
Aziz Chami
Jim Chapel*
Tariq Chaudhri
Rachael Chavez
Darren Check
Cynthia Chenault
Peter Chereson
Dawson Cherry
Allen Chestnut
Karamat Choudhry
James Chrisley
Kamrin A. Cierpiszewski
Thomas Cifone
Geoffrey Clapp
Amelia Clark
Barbara Clark, MD*
David Clayton*
Blake Cleary
Annie Cleveland
Paul Cohen
Hester Cole
Jenelle Cole
James Collier
Tom Condon
Chris Conforti
Sally Connell
Michael Connelly
Angela Connolly*
Pete Conrad
Marcy Conti
Dr. David Cook*
Joanne Cook
Keith Cook
Tim Coon
Matthew Cooper*
Tim Corbett
Elaine Cormier*
Francis Corsaro
Emmett Cosgrove
Jackie Cossman
Tara Courtland
Mary Covington
Vernon Coward
Aubrey Cox
Florin Craciun *
Hermien Creger*
Deidra Crews, MD
Bryan Crittenton*
Janet Cronk
Stewart Crown
Constance A. Curran
John Curry
Joseph Curtin

Melissa Custis
Helen Cytryn
Margaret Cytryn
Mark D'Amato*
Adelia Dager
Gary Damico
Reginald Dancil
Chris Daniel
Deborah Daniel
Erik Daniels
Gerald and Laura Darling
Pattie Dash
Jeffrey Davies
Andrew Davis
Elizabeth Davis*
Ronald Davis
Scott Davis*
Steven Davis
Tad Davis*
Wallace Davis*
Wayne Day*
Clifford Dean
Deborah Deanovic
Edith Deas
Dean Defiesta
Joe DeLuca
William Deluca
Paul DeMore
Mark Dempsey
Tsega Denneke
Nancy DeNolf*
Fred Deponte
Michael J. Desmond
Maria DeVita*
David Deyer
Gene Dickey
Ann and Gary Dickson
Stephen Dietz*
Barbara Dineen*
Elizabeth Dodds
Adam Doiron
David Dolmatch
Rogelio Domingo
Kelly Donovan
Zachary Dorfman*
James Doser
Mary Doyle
Chris Driessen
Brad Duff
Sean Dugan
Thomas Duncan
Philip Dunford
Sherea Dunlap
Dunn Family

Charlotte and Dennis Dunne
Sherry DuPerier
Tahiry Duran
Sue Durlak
Colleen and Scott Dykema*
Nathan Earl
Amanda Easley
Evangeline Eastham
Eric Eaton
David Echeverria*
Richard Edelson
David Edlin
Charles Edwards
Emily Edwards
Charles Edwin
Michael Eisenband
Steven Elefson
Barbara Elia *
Jennifer Elia*
Jim Elkin
Gary Ellis
Thomas Endicott*
Shabnam and Alex Eng
Thomas Epps
Donald Eric
Stephen Erskine*
Walter Eugene
David Evers
Mauro Faibicher
Michael Falkenhain
Leslie Fals
Sandy Falsis
Maria Fasulo*
Drew Fatone
Gary Favors
Marvin C. Feagan
Jean Ferdinand
John Ferrell
Alison Field
Howard Fields
Ronald Finch
David Findlow
Frank Fini
Mary Fink
Fran Finn*
Regina Fischer
Joseph Fisher*
Peter Fisher*
Pamela S. Fitzpatrick
Mitchell Flatt
Ethan Fletcher
Sara Flick
Jason Floyd

Chuck Flynn
Anne N. Folk
Christopher Ford*
Michelle Ford
Peter Forgosh*
Richard Formica
Gordon Fornell
Penny Forster*
Amy Foster
Feji Francis
Robert Francis
Michael Fraser
Timothy French
Robert Fried
Joel and Sharon Friedman*
Barbara Froede
Tamara Frye
Frank Fuhrer
Terrence Fullerton
Errica Funderburk
Guy V. Furay
Lauren Gadiant
Aastan Gadson
Letty Gail
Alberto Gallo
Victor Garcia
Neil Gardiner
Joanne Garges
Pat Garlock
Magdalena Garza
Maureen Gaulden
Phil Gauthier*
Suzie Gearhart
Mark Gentile
Paul George
Gretchen Gerbic
Martha Gershun
Kevin Gessner
David Gibson
Fred Gibson
Don Gilbert*
Norm Gill
Vicki Gill
Dawn Gilmore
Jeff Giullian*
Charles Glenn
Jim Glomstad
Justin Glover
Sharad Goel
Lauren Goff*
Sherita Golden
Rich Goldsborough
Traci Goldstein
Mike Gonyea*

Sheila and Alan Gordon
Renée Gosline*
Michael Gouge
John Gould
Lou Gould
Joanne Gounaris
Laura Grace
Nate Graf
Diane Granderson
Russel Grant
Dean Gray
Phillip Gray
Joanne Green
Joyce Green
Richard Green
Sheryl Greenberg
Clare Greene
Danny and Sharon Greenfield*
Jamie Greenhalgh
Gloria Greenspun
Peter Greenwalt*
Russell Gregg
Michael Grenda
Deborah Griffith
Michelle Griffith
Hoy Grimm
Cameron Grimme
Lawrence Grisham
Paul Groh
Laura Guidi
Timothy Guilfoyle
Keith Guller
Navin Gunalan*
Joseph Gurrieri
Mindy Guyer*
Louis Guzzetti
Janet Habiger
Amir Haider
Linda Haigler
Christopher Hairston
Brandon Hall
Derrek Hallock*
Martha Hamilton
Mark Hammel
Emmala Hanlin
Virgie Hannah
Greg Hanshaw*
Caleb Hanson
H. Edward Hanway*
Sandra Hardy
Sundaram Hariharan, MD*
Lanselott Harris
Larry D. Harris*

Melanie Harris
Marc Harrison
Brennan and Maureen Hart*
Gerald Hartman
Jack Hartog
Douglas Harvison
Judith Hasko
Will and Carolyn Hayes
Ryan Hayes*
Albert Haynesworth
Duncan Hays
Ballad Health
Larry Heaphy
Sheree Heaphy
John Hegeman
Leslie Heine
Anne M. Hemmert
Collin Henderson*
Sue Hendon
John and Dianne Hergenrother
Megan Herman*
Allan and Nancy Herzog
Clifford Hester
Sherri Heyward
Casey Higgins
Draht Hill
Katja Hill
Quinn Hill*
Ron Hill
Malinda Hillebrenner
Danielle Hilliard
Scott Hipwell
Anthony Hockenberry
Melinda Hockensmith*
Chandler Hodge
Jeffrey Hodge
Carolyn Hodges
Oswald Hodges*
Carrington B. Hoefer
Jack Hoffnung
Paul and Lois Hofmann
Michael Hogan
Coleen Hohn*
James Holland
Jennifer Holley
Bob Holman
Robert Holmes
Stephen Holt*
Alan Horwits*
Gwen Hotchkiss
Tom Hough*
Richard J. Hourihan
Derek Houseworth

Steven Howard
Mark Howat
Linda Howell
Howland Family Foundation*
Judy Hsieh
Glen Hubbard
Marie C. Huckins
Erin Hudgins
Carly Hudolin
Amanda Hudson
Joseph and Meliss Hudzik
Katheryn Huey
Sue Jean Hughes*
Eva Hui
Randell Hull
Gordon Hunter*
Garry Hurlbut
James Hussey
John Hutchinson
John Imbriale
Michael Iosue
Rubeen Israni
Luis Iturriaga
Ann Iverson*
Sheela Iyer*
Lou and Mary Beth Jablonski*
Alvin Jackson
Christopher Jackson*
Dion Jackson
James Jackson
Rebecca T. Jackson
Sabrina Jackson
Sue Jackson
William Jackson
Marcie Jacobs-Cole
Keith Jacques
Frank Jaffe*
Muralidharan Jagadeesan
Charles Jamerson
Doris James
Iris James
Jeremiah James
Teresa James
Geoff Janssen*
Daniel Jarrett
Michael Jarvis
Delores Jean
Diane Jeanette
Karen Jedlicka
Jay Jenkins
Kenyatta Jenkins*
Lois Jennings

Shermain Jeremiah
Timothy Jessell*
Dan Jindra
William Jindracek
Kathy Jo
Andrew Joel
Aaron Johns
Christine Johns, MD
Richard Johnson
Tenysa Johnson
Tyler and Melanie Johnston
Adam Jones
Brent M. Jones
Brittany Jones
Larry Jones
Mark Jones
Cornelius Joseph*
Michael Jutzin
Janice Kadowaki
Marcie Kahlil
Eli Kahn*
Stephen Kahn*
John Kalohn*
The Marcia and Ned Kaplin Foundation*
Kevin Karabin
Daniel Karr
Dayna Karron
Randeep Kashyap
Jaymee Kau
Mary Kay
Karl Keasler
Sarah Keasler
Stacy Keefer
Lanny Kegley
Robert Kellas
David Kempff
Ann Kemple
Angie Kenin
John Kenney*
Tom Kernan
Marniy Kerrison
Dan Keslar*
Susan Ketron
Paul Kichler
George Kilbourne
Soo Kim
Richard Kinard
Barbara King
Jean King
Joanna King
Kimberly King
Marilyn Kinslow
Susan Kinter

OUR FINANCIAL OVERVIEW

Jason Kirchhoff	Mark Lee	Bob Manza*	Antonio Mendoza	Mae Nagao	William Overby	Nicole T. Pride	Bob Rodkey*	Christopher Schwab*	Garrison Smith
Jeffrey Klanderman	Minajoy Lee	Reggie Marcel	Creighton Mershon	Marty Nagle	Dale Overturf	Chuck Pridham*	Linda Roessner	Andrew and Susan Schwartz*	Jeremy Smith*
Jeremy Klein	Sheri Lee	Janine Marchner	Linda Messier	Lisa Narvaez	Trevor Page	Cozumel Pruette, MD	Jill Roff *	Aronna Schwegal	Joan Smith
Anthony Klemenc	Teodorico Lee	Kendra Marcotte	Kathleen Methric	Ramani Nathan*	Terr Palmese	Charles Pryor	Bryan Rogers	Benjamin Scoggins	John H. Smith
Ellen Kluge*	Baromkoch	John R. Marcucci	Brad Meyer	Angelo Natoli	Chris Panayotopoulos	Jonnie Putney	Joseph Rogers	Christopher Scott	Karin Smith
David Knight	Leenutaphong	William E. Maree	Daniel Mezich	Barbara Navarro	Demetrios Panayotopoulos	Sandra Quackenbush	Laurie Rogman*	Jeremy Scott	Larry Smith
Thomas Knight*	Matthew Leff*	Joseph Marinelli	Matthew Micalizzi	Clayton Neal	Abigil Panter	Omar Quiceno	Robert Rohde	Phillip Scott	Sabrina Smith
John Knop*	Jai Leigh	John Mark	Douglas Michael	John Neal*	Mark Paris	Ryan J. Quinn	Linus E. Roman	Melody Sears	Eric Snyder
Blaire Kobliski	Steven Lenkowsky	Linda Markham	James Michael	Robert Neal	Ryan Park*	Geraldine Rains*	William Rombilus	Susan Sedmak*	Jeanne Snyder
Robin Koda*	Calvin and Ann Lentz	Kelly Markiewitz	Virginia Michaels*	Lavinia Negrea*	Charles and Blair Parker*	Alec Rajeev	Jennifer Rorabaugh	Zachary Segundo	Samrith Som
Kenneth and Lois Koenig	Jonathan Leopold	Ben Marlar	Katherine Michiels	Richard Negri	Lauren Parker	Kim Rallis	Ned Rosen*	Lisa Seldon	Tom Sommerfield*
Elizabeth Kok*	Cary Levering	Brian Marler*	Don Miller	Anthony Neidlinger	Renee Parker	James Ralph	John Ross	Olia Sergeyevna	Joseph Sonkowsky
Jessica Kolansky, Esq.	Alan Levin*	David Martin	Elizabeth Miller	Bernard Nelson	Vann and Carol Parker*	Dolores Rance	Susan Ross	Familia Serrano	Karthik Sosale
Nancy Konopelski	Lisa Levy	Henry Martin	Greg Miller, MBA	Kimberly Nessel	Michael Parkes	Karen and Tom Ransohoff*	Raymon Rossini	Jim Sexton	Jewel Southerland
Louis Kosse	Bridget Lewis	Kristina Martin	John Miller	Robert Nettles	Sean Parsitt	Kyle Rasco	Joshua Roth	Joe Sexton	Chistropher Sowdon *
Teresa Kosse	David Lewis	Luke Martin	Lucas Miller	James Nicholas	Francis Parson	Daniel and Daphna Raskas*	Michael Rousselle*	Bruce Shackelford	Nick Sowell
Jane Koven	Richard Lewis	Troy Martin	Rachel Miller	Stephen J. Nicholas, MD*	Katelyn Passarell	Felicia Ray	Robert Rowland	Lisa Shaffstall	Elizabeth Speed
Greg Kozlowski	Marianne Liddle	Kenya Martinez	Richard Miller	Jacquelyn Nicole*	Stephen Pastan, MD	Seth Ray	Stuart Rozear	Charles Sharlou	Donna Speller*
Hannah Kozlowski	April Liggons	Daniel Martinez*	Ty Miller	Silke Niederhaus, MD	Ravi Patel*	Doug Raymond	Christine Rubin	Claire E. Sharp	Michael Spence
Jay Kramer	Danielle Lightfoot	Bobbie D. Massey	Virginia Miller	Kevin Niemoeller	Vandana U. Patel	Michael Reagan*	David Rudd	Nicole Sharpe	Jodie Spicer
Myra Kraus	Graham Lincoln	Donald Matthaei	Peter Milligan*	Sankar Niranjana	Aravind Patnam*	Henry Reece	Peter Rudy	Thomas Shaughnessy	Earl Spillman
John Krekovich	Ramel Lindsay	Drew Matthew	Lauren Ming	Patricia Nishimura*	Janet Patterson	Elizabeth Reed	Kymberliane Ruth	Angela Shaw	Jan and Wayne Stahl
Meena Krishnan*	Mr. and Mrs. John Linn	Martha Matthews	Marianela C. Miranda	Robert Nobile	Jonathan Paul	Karlynn Reed	Marie Ruth	Carla Shaw	Gordon Stansbury
Tina Kubinski	Sandra Lipson*	Ron Maurer	Samardia Missick	Glenda Noel	McKann Payne	Elizabeth Reed	Tarrynn Rutherford	Owen Shaw*	Lauren Stansbury
Joshua Kuebel	Raymond Lloyd	Melanie Maxwell	Brent Mitchell	Foks Noelle	Charles Peacock	Brian Regan*	Dan Ryan	Donna Shea	Jan Starnes
Joseph Kuehler	Michael Lollo	Jeffrey May	Donzelle Mitchell	Greta Nolan*	Brian Pecquet*	Sandy and Gene Reid	Kristen Ryan	Jonathan Shea	Bryan Starrette
Thomas Kuhn	Amy Long	Darrell McAllister	Frank Mitchell	Jeremy Nottingham	Aaron Pennell	Daniel Reid*	Douglas Ryerson	Nabil Sheikh	Tim Statts
William Kuhn	Brian Loos	Jerome McArthur, Jr.	Sherilyn Mitchell	Jarod Nugent*	Rebecca Pennington	Charles Reinbeck	Venus Saavedra	Robert Sher*	Heather Steglich
Shravan Kumar	Brian Lovequist	Randall Mcatee	Jeff Mohr	Jesse Nuschke	Misha Perdomo	Kaycee Reineke*	Jennifer Sabih*	Jeanna Sherbondy	Hilda Steiner
Gretchen Kvistad	Sharon Lovette	Bobby McAvoy*	Ryan Mollenkopf	Roger Nutting	Christopher Perl*	Robin Reitzes	Brian Sabine	Chad Sheridan*	Jennifer Stephenson
John Lackner	Elizabeth Lucas	Terri and Mark McBeth	Theresa Molloy*	Joanne E. Nuzzo	Wendy St. Peter	Paige Rempfer	Dennis Sacha	Joel Sherman	Russell Stepp
Lanre M. Ladipo	Douglas Luftman*	J.J. McBride	Christine Moore	Charitable Fund*	Gladys Peters	Lane Renfro	Nusha Safabakhsh*	Wayne Shimer	Albert Stewart
Roxane Lair	David and Jennifer Lukas	Martin McCain	Walter Moose	Huong O'Brien	Debra Peterson	Scott Requadt	Cindy Sain	Steve Shira	Alexandra Stewart
Cecelia Lance*	Kimberly Lumpkins, MD	Lisa McCants	Jeffrey Moran*	David O'Neill	Marcella Peterson	Anthony Retort	Paul Sakiewicz*	Theresa Shoemaker	James S. Stewart*
Lanier Family	James Lurie*	Dennis McCarroll	Joseph Morganti	Catherine O'Rourke	Kevin Pettis	Troy Revell	Morgan Salvador	Bob Siegel	James Stioll
Lina Landrigan*	Robin Lynn	Cindy McClanahan	Betty Moseley	Jennifer Ogle	Roland Phillips	Michael Reynolds	Mary Salvatore*	John Silkensen, MD	Dennis Stogsdill
John Lane	Terri Lynn	Rose McClyde	Scott Moser	Dianne O'ori	Wayne Phillips	Garrett Rheäume	Mario Sampedro	Mr. and Mrs. Christopher Simon, LCSW-C	Talisha Stokes
Joye Lane	Ginny Lyons	Ryan McCormick	Yvonne Moussa	Steven Oiness	Kari Phlegar	Diane Rhinehart	Lee Sanders	James Sims*	Alan J. Stone
Carol Lanese	Christine Macaione	Frank McCusker	Christopher Moyeno	David Oldach*	Simeon Pickard	Thomas Richard	Shalin Sanghvi*	Joe Sinacore	Matt Stone
Ronald Lang*	Ian MacDonald	Tom McDonough	Jeffrey Mulhern	Edward Oleksiak*	Robert Pieper	Randall Richardson	Eugene Sapakoff	Aisha Singletary	Maureen Stone*
Deborah Lanier*	Jonathan Machia	Lia McGirt	Lori Mulichak	Jean Oliver/Fraternal Order of Eagles*	Donna Pierce	Ellen Richman	Charles Sarbaugh	Ian K. Sinopoli	David Stotts
Abby Lankhorst	Mike Maciolek	Mike McGrath	Tammy Muller	Xochitl Oliveros	Jennifer Pierce	Scott Richman	Carolyn L. Saunders	Bradley Sisson	Amy Stoudemire
Deborah Larsen*	Craig MacIvor	Kimberly McGraw	Kira Mullis	Mark Olsen*	Krista Piles	Mary Riggins*	Patricia Saunders	David Skinner	Cheryl Stowe*
Allan Latts*	Rosemary Madruga*	Jennifer McGuire	Bethany Murphy	Paul Olson, MD	Richard Plamondon*	Elaine Riggs	Ann Schaffer	Michelle Skinner	Kathleen Strader
Allan Lauer*	Rea Main	Christine McHugh	Chuck Murphy	William Olson	Anthony Polimeni	Hernan Rincon	Lorraine Schapiro	Richard Skolnik, MD	Keith Strand
David B. Lauster	Josh Maine	Kerry McKenney	Tim Murphy	Robert Opatrny	Joseph Pomykacz	S. Brad Rives	Shane Schattinger	Lisa Slinsky	Troy Strawhecker
Robert Lawrence	Adri Maisonet	Michael Mcketa	Melissa Murrell	Ben Orris	Donna Popowich	Kelsey Roberts	Michael Schissler	Laura Slyman	Ericka Strawn
Stan Laws	Warren Maley*	Debbie McKinney	George Myers	Julie Osborne	Patricia Potts	Sarah Roberts	Ellen Schmidt	Merdenis Smalls	Jill Strickland
Katherine Lawton	Kelly Malone	Kathleen Mcleod	John Myers	Michael Ossip*	William Powell	Bradley Robins	Kim Schoenrock	Lynn and Victor Smiroldo*	Terry Stricklin*
Joseph Laycock	Sharon Maloney	Kevin McLeod	Nicolette Myers	Dan Ostrander*	Jay Powelson	Charles Robinson*	Greg Schowe	Amada Smith	Kelli Strother*
Thuy Le	Karen E. Maloy	John McNab	Cheryl N*	Fernando Otero*	Bryan Powers	Nicolette Rochelle	Andy Schrock	Janis Schuberger	Edward Strycharz
Greig Leach	Vernita Manigo	Gail McNair*	Anthony F. Naccarato, PE, SECB	Rosemary Ouseph	Steve Prada	James Roddey	Anthony Schrunck	Richard Schulman	Joan Strzelecki
John Lebold	Deanna Mann	John McNamara	Vivek Nadkarni	Brian Outland*	Penry and Melissa Price	Chie Roden	Brantley Smith*	David Smith	Steve Stump
Paul Lechowicz	Stephen Mann	Ashley Meekins		Jessica Overbey			Kim Schumann	Dwight Smith	Nanett Suchocki
Brennan Ledyard	Connie Manske	Viv Melwani							Eric Surat*

Joshua Sussberg	David Trautman	Thomas Waid	Larry Weiss*	Willie Williams
Jan Sussman	Joseph Tremonte	Jon Waldorf	Ben Weissman*	Andrew Williamson
Curt Swanson	Helen Trent	Ralph Waldrop	Brian Welch	Don Williamson*
Melissa Swick	Amanda Trentham	Dennis Walker	Curtis Wellborn	Donald Wilson*
Jackie Szafara	Terry Troge	Linda Walker	Thomas Welshonce	Patricia Wilson
Kaitlin Tabar	John Tschamler	Shawn Walker	Bruce Wenger	Paul Wilson
George Tasick	Prashant Tungare	Thomasina Walker	Julie Werder*	Mike Winchell*
Lynne Tatum*	Rizal Tupaz	Stephanie Wallace	Mark Werling	Ann Winder
Jill Tavello	Andrew Turner	Rajni Wallia, MD	Janet Weron	Samuel Wise
Michael Taylor*	Kathryn Turner*	Russ Walsh	Ray Wesley	Charles Witt
Geoffrey Teehan	Melinda Turner	Verna J. Walsh	William West	Barry Wolf
Milton Telak	Michele Turner	William Walsh	Thomas Westermeyer	Mark Wolk
David Terry	Saverio Tuzzolo	Lois Walters	Jeffrey Weyers	Timothy Wolterink
John Thatcher	Anne Marie Ugarte	Sherry Walters	Cameron Whaley	Daniel S. Wood
William Thaubald	Todd Ungard*	Robert Walton	Aline Whitacre	Glenn Woodcock
Tim Theriault	Kumar Vajapey	Herbert Ward	Larry White	Joseph Woods
Stephen Theuer	Amanda Valliant	Mark Ward	Milender White	Linda Word
Leah Thomas	David and Sally Vanella*	Jason Ward*	Derek Whitlock	Garrett Workman*
Sharon Thomas	Michael Vanyo	Jason Warr	Nicki Whitmire	Scott Wright
Tamara Thomas	James Veale	Michael Warren	Courtney Whitney	Elizabeth Wurtz
Tamm Thomas	John Veiga	Catherine Warth	Kenneth Whitted	Anju Yadav, MD*
Daniel Thompson	Ana-Fe Velaquez	Melanie Warth	Jeffrey Whitten	Scott Yards
Eric F. Thompson III	Jennifer Vellone*	Matt Warye	William Whitten	Jeremy Yospin, MD
Mark Thompson	Balakrishna Venkatrao	Owen Waston	Donna Whittle	Christina Young
Cindy Tinker	Mark and Donna Veyette	Paul Waszkowski	Ernest Wiggins	Gary Young
Leo Tokar*	Adolfo Villar*	Natalie Watkins	Deborah Wikstrom	Francis Zablocki
Jeffrey Toll*	Bernadette Vincent	Anelson Watkins	Matthias Will*	Stephen R. Zacharias
Debra Tolliver	Edwin Vinson	Curtis Watson	Aifrida Williams	John Zanger
Sina Toussi	Richard Virshup*	Jennifer Watson*	Jay Williams	Judy Zauner
Catherine and Gary Townsend*	Melissa Vlak	Joe Watson	Martha Williams	Greg Zavoyna
Fernanda Trabelsi	Frederick Volkomer	Thelma Watson	Michael and Virginia Williams*	Robyn and Barry Zeller
Wayne Tracey	Peter Volpe*	Gregory Wayne	Robert Williams	Rona Zemel
Ronald Trageser	Robert and Meridith Voltaggio*	Betty Weaver	Roy Williams	Dave Zitur
Melissa Transier	Christian de Vries*	Adam Weiss	Susan Williams	Leslie and Ken Zuckerbrot*

ESTATES AND TRUSTS

\$10,000+	Marion S. Clute	Rose C. Herminghaus	Minchin Trust	Kathryn Harrington Rea
Julie S. Abrams	Elda Ilene Collins	Flora Paxton Hickman	Phyllis C. Mule	Sarah V. Ridgeway
Coletta A. Ammann	Tana Corsi	William Hughes	John Nargi	Janet L. Rieckenberg
Mary E. Avery	Cherie L. Darr	Gerald Leonard Jacobs	Margaret A. Neill	E. Gladys Rothwell
Mary Barsam	Virginia M. Dowe	Duane Jelinek	Fred and Joyce Nicholas	Marion K.B. Sandala
Howard Arthur Beeten	Robert M. Eckert	Walter Jeter	Bonita C. O'Brien	Mary Lou Schirmer
Sharon M. Bennett	Richard P. Elgin	Doris Jones	Angeline Paradiso	Max Shostack
J. Charles Binder	Doris Evans	Donna J. Jordan	Clara C. Perini	Andrew J. Slivko
Brighthouse Financial	Dora and Louis Fox	Jan Kadar	Irene Emily Petrik	Lonnie Stephens
Walter A. Broll, Jr.	Robert D. Fox	William Carl Krumlinde	Frank Petrini, Sr.	Eileen Rose Stiefel
Gary S. Cantino	Frances C. Frye	Robert Lansberry	Jennie T. Pierno	David V. Sussman
Barbara Cassidy	Irving Greenberg	Joan E. Larmour	Mark Pine	Joan Watkis
George Christ Charuhas	Vera E. Hager	Eddy G. Lee	Mary Powell	Thomas J. Wenc
Carolyn A. Chick	David B. Hamilton	Paula W. Little	Dorothy R. Radtke	Rose Marie Williams
Barbara Cimino	Beverly J. Hansen	Elizabeth Lee Louie	Donald E. Rassaert	Alan G. Wittrock
Winnifred P. Clark	Thelma Faye Harms	Grace P. Michler	Theodora Raven	William M. Yeaman

CORPORATE AND FOUNDATION PARTNERS

Akebia Therapeutics, Inc.	ChemoCentryx, Inc.	JLL	Otsuka America Pharmaceutical, Inc.	United Way of the National Capital Area
Alexion Pharmaceuticals, Inc.	Chubb	Johns Hopkins Medicine	OutsetMedical, Inc.	UnitedHealth Group
Allegheny Health Network (AHN) together with Highmark Blue Cross Blue Shield	Cleveland Clinic	Kelley, Sammons, Toole, & Ellison LLP	PA Department of Health, Bureau of Family Health	UnitedHealthcare/Rocky Mountain Health Plans
Alliant Health Group, Inc.	CloudCath	Kenmore Realty Corporation	Palmer Family of Companies, Inc.	University of Cincinnati Health
Allmond & Company, LLC	CLPF Chevy Chase Pavilion – St. Louis, MO	Keswick Organization	Paramount Pictures Corporation	University of Kentucky Transplant Center
American Renal Associates	Collins Building Services, Inc.	Kiawah Resort Associates, L.P.	Frank Petrini, Sr. Trust	UofL Health (University of Louisville School of Medicine)
Amgen, Inc.	Colorado Kidney Care	Kidney Specialists of Minnesota	PhRMA	University of Maryland Medical System
Anthem	Commonwealth of Pennsylvania	KidneyTexas, Inc.	Planet Fitness	University of Pittsburgh Medical Center (UPMC)
Ardelyx, Inc.	Community Thrift – North Charleston, SC	Koppers, Inc.	PPG Industries, Inc.	U.S. Renal Care, Inc.
Armor USA, Inc.	Cowden Associates, Inc.	Lucile Packard Children's Hospital	QBE Insurance Group Ltd.	USAA Serves – Board Site
Arthrex, Inc.	Cozen O'Connor P.C.	M&T Bank Corporation	ReataPharmaceuticals, Inc.	Veloxis Pharmaceuticals A/S
AstraZeneca Pharmaceuticals LP	CVS Health	Mallinckrodt Pharmaceuticals	Reidell-Estey & Associates	Verizon Communications, Inc.
AT&T, Inc.	Dallas Nephrology Associates (DNA)	Mar Cor, Evoqua Water Technologies	St. Louis Community Foundation	Vertex Pharmaceuticals Incorporated
Atlantic, Tomorrow's Office	Dallas Renal Group (DRG)	McCormick & Company, Inc.	Samba TV	Vevo LLC
Attain LLC	DaVita Kidney Care	Sanford Health	Sanofi	VideoAmp, Inc.
Aurinia Pharmaceuticals, Inc.	Delran Builders	Sarris Candies, Inc.	Sarris Candies, Inc.	Visterra, Inc.
Aveo Pharmaceuticals, Inc.	Discovery	Satellite Healthcare	Schneider Electric SE	Warner Media, LLC.
Avera Pharmaceuticals, Inc.	DM Dilella Family Foundation	Siemens Medical Solutions USA, Inc.	Siemens Medical Solutions USA, Inc.	Wasserman Media Group
Avera Health	Donor Alliance, Inc. – Denver, CO	SMSC Gaming Enterprise (The Shakopee Mdewakanton Sioux Community)	Mid-America Transplant Foundation	The Wawa Foundation
BackSwing Golf Events, Inc.	East River Medical Imaging	Snap, Inc.	Mid-Atlantic Nephrology & Associates, P.A.	WellCare Health Plans, Inc.
Bayer	ECC Group, Inc.	Spectrum Science Communications, Inc.	Morgan Stanley	Wil-Ken Enterprises, Inc.
Berkadia Proprietary Holding LLC	Equus Capital Partners, Ltd.	Spiceology	Natera, Inc.	Wilbraham, Lawler & Buba
Boehringer Ingelheim Pharmaceuticals, Inc.	Exelixis, Inc.	Spiral Financial	National Kidney Services, Inc.	Fred and Floy Willmott Foundation
Brighthouse Life Insurance Company	FirstEnergy Foundation – Akron, OH	SurgiCare of Manhattan	Nephrology Associates of Kentuckiana, PSC (NAK)	Young Contracting/SE, Inc.
James R. Budore Construction	First National Bank	Talaris Therapeutics	Network For Good	
BUILT National	Fox Media LLC.	TelevisaUnivision (formerly known as Univision Communications)	Newmark & Company Real Estate, Inc.	
Carolina BUILT LLC	Fresenius Medical Care	Tennessee Disability Coalition	NFL Enterprises LLC	
North Texas BUILT LLC	Fryar Private Wealth Management Group of Wells Fargo Advisors	Tito's Handmade Vodka	NKF Community Health Charity	
BuzzRx	G & C Food Distributors, Inc.	TraverseTherapeutics	North Texas Kidney Consultants	
Calliditas Therapeutics AB	Global Health Products, Inc.	Tufts Medical Center	Northwell Health	
CAMP Construction Services	Greumber Fund	UCHealth	Novartis AG	
Camps for Kids	GSK	UMR (United HealthCare Services, Inc.)	O'Connell Electric Company, Inc.	
Capital Group Companies	Hartford HealthCare	Union Bank	OMD	
CareDx	HEB	United States Department of the Treasury	OneLegacy Foundation	
Carrington Charitable Foundation	Horizon Therapeutics plc	Bergen County's United Way	Opko Pharmaceuticals	
CBRE Group, Inc. (Coldwell Banker Richard Ellis)	IBM Employee Service Center		OPTUM, Inc.	
Centura Health	iHeartMedia, Inc.			
Charity Golf International	InMed Medical			
Charity Supply, Inc. – Carrollton, TX	Insurance Auto Auctions (IAA)			

CORPORATE
MEMBERSHIP
PROGRAM 2022

PLATINUM

Exelixis
GlaxoSmithKline plc.
Quest
Renalytix
Vifor Pharma

GOLD

Ardelyx
AstraZeneca plc.
Aurinia Pharmaceuticals
Boehringer Ingelheim
CVS Kidney Care, LLC.
Mallinckrodt Pharmaceuticals
Merck & Co., Inc.
Novartis AG
Otsuka Pharmaceuticals
Vertex Corp.

SILVER

Alexion Pharmaceuticals
Alnylam Pharmaceuticals
Bayer HealthCare
Bristol-Myers Squibb-Pfizer
ChemoCentryx
Eisai Co., Ltd.
Medtronic plc.
Novo Nordisk
Pfizer Inc.
Reata Pharmaceuticals Inc.
Sanofi Aventis

BRONZE

Amarin Corporation
Anji Pharma
DiaMedica Therapeutics, Inc.
Intuitive Surgical, Inc.
Kezar Life Sciences
ProKidney
Telix Pharmaceuticals





08 FOCUS ON THE LOCAL COMMUNITY

The NKF mission brings together a diverse range of grassroots advocates, passionate volunteers, and local health leaders, all focused on a common goal of improving kidney health. Nowhere is that more evident than in the dedication of NKF supporters across the country. Their generosity helps us increase awareness and raise more funds for our life-saving work. Despite fears of a recession, NKF experienced a 21 percent increase in financial donations in the past fiscal year with nearly 700 people committing to recurring monthly contributions.

We deeply appreciate the commitment every one of our donors makes and are proud to say their work allows us to put funds back to work in local communities. Here are a few ways NKF focused on local communities in FY22.

Renal Roundtable Series—In partnership with nearly 30 corporations, a total of 27 local NKF Chapters hosted 90 Renal Roundtables last year. This expanded series allowed us to educate local health professionals about the latest research and provided them with opportunities to network with others who share their passion for improving the lives of kidney patients. Additionally, the series raised almost \$700,000 for NKF’s mission.

THE BIG ASK: THE BIG GIVE®—Our platform designed to help patients find a living donor continued to grow. Nearly 2,000 patients and care partners across 13 states participated in virtual and in-person workshops.

NKF Events—Whether it is our series of Kidney Walks, NKF Konica Minolta Golf Classic events, or virtual fundraising, NKF events saw another great year of support. More than 23,000 volunteers helped raise nearly \$9.5 million at more than 100 in-person and virtual events in FY22.



[Watch the video for more information on the great successes NKF volunteers and professionals achieved last year.](#)

ON THE HORIZON IN FY23

Our mission to save lives continues to move forward with some of our most innovative and impactful work to come. Here are a few highlights of what you will see in next year's report

- **Voices for Kidney Health® and the 2022 Mid-term Elections**—NKF is working to ensure all candidates recognize that kidney disease is an urgent public health crisis and are fully committed to advancing our policy agenda.
- **10th Annual Kidney Patient Summit**—For a decade, patients and care partners have used their personal experiences to inspire support, funding, and legislation from policymakers in Washington, D.C.
- **50th Anniversary of the Medicare End-Stage Renal Disease (ESRD) Program**—The law, which had bipartisan support, provides universal coverage for treatment for kidney failure, regardless of age or prior disability. It makes dialysis and transplantation an option for every person facing ESRD.
- **NKF Innovation Fund**—Our most ambitious and exciting research program yet. The NKF Innovation Fund leverages our authority to function as a catalyst for investments in pioneering, early-stage companies. We're helping fast-track the development of transformative kidney disease treatments to get them to patients—faster.
- **Further Adoption of NKF's Quality Measure for Diabetic Kidney Disease**—NKF continues to promote the use of our recently developed HEDIS and MIPS measures for Kidney Health Evaluation for Adults with Diabetes. These measures aim to address gaps in care. The HEDIS (Healthcare Effectiveness Data and Information Set) measure was released in 2020 and is part of HEDIS Measurement Year 2022. The MIPS (Merit-based Incentive Payment System) measure has been submitted and is currently on HHS' Measures Under Consideration list for 2022 which means it could be included in the MIPS program this year.
- **Expansion of CKDintercept to At-risk Communities**—We've developed a multipronged strategy to overcome many barriers to improving CKD care in primary care. NKF is partnering with both private companies and government agencies to launch implementation strategies to increase awareness of the impact of CKD, facilitate health system and practice engagement with CKD as a quality improvement target, and facilitate the implementation of NKF's CKD Change Package in primary care settings.
- **Major New Transplant Initiatives**—NKF is creating a comprehensive new plan aimed at increasing the number of living donor transplants while increasing access to the waitlist. Our program is designed to measurably change public thinking about kidney transplantation and organ donation, create a grassroots movement that further builds public support, and empower a wide spectrum of people, who can become advocates for kidney health in their communities and social circles
- **Advancing the Role of Xenotransplantation**—NKF brought together diverse groups of stakeholders for a series of workshops to accelerate research and promote clinical utilization of the exciting new field of xenotransplantation. Participants were tasked with reviewing the current knowledge base, evaluating gaps and barriers to initiating human clinical trials, and making recommendations on clinical trial design and priorities for future research.



Fueled by passion and urgency, the National Kidney Foundation is a lifeline for all people affected by kidney disease. As pioneers of scientific research and innovation, we focus on the whole patient through the lens of kidney health. Relentless in our work, we enhance lives through action, education, and accelerating change.

30 E. 33RD ST. | NEW YORK, NY 10016 | [KIDNEY.ORG](https://www.kidney.org)

