



2018
SPRING
CLINICAL
MEETINGS

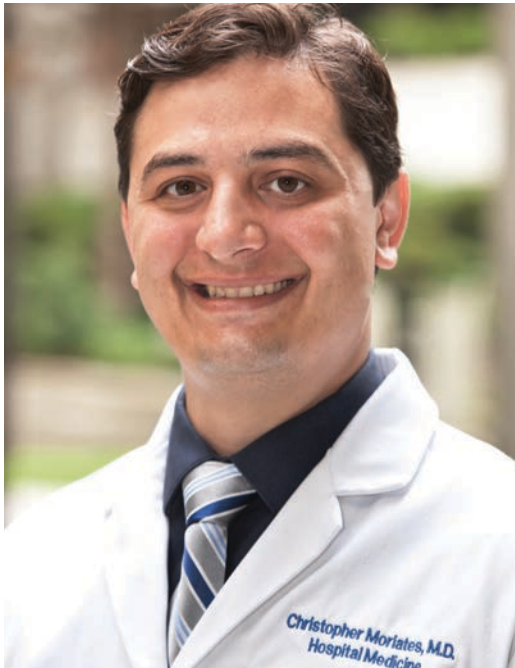
Preliminary Program



Austin

Meeting Dates

April 10 – 14, 2018



FEATURED KEYNOTE SPEAKER

Christopher Moriates, MD

Dell Medical School at the University
of Texas at Austin

"Working Together to Deliver High-Value Care"

Wednesday April 11th

2:15pm–4:00pm

Co-authored "Understanding Value-Based
Healthcare"

Creates innovative value-based care
curriculum in a first-of-its-kind position
for a medical school.

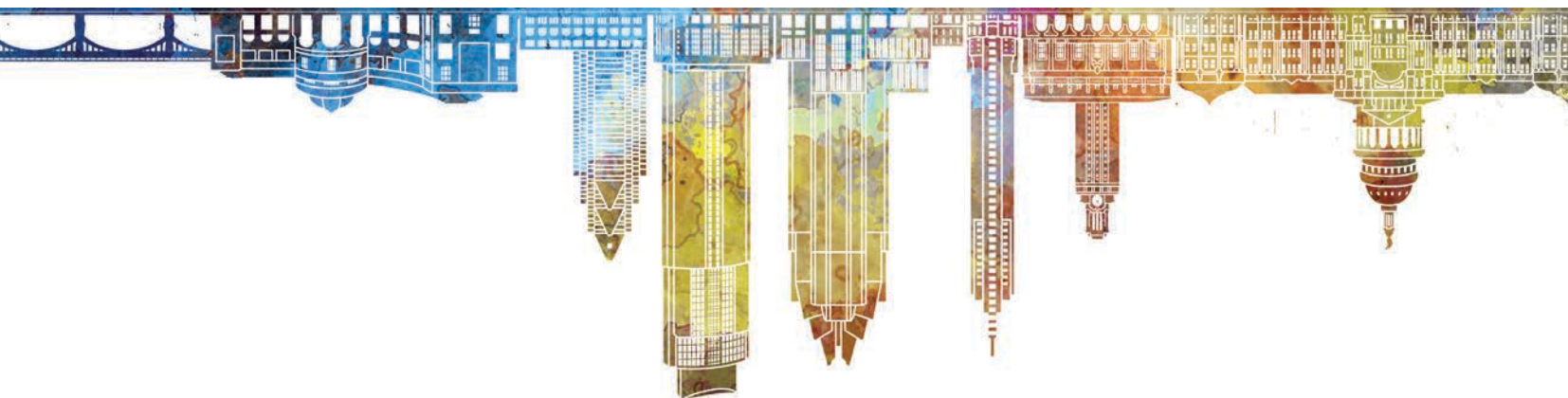


TABLE OF CONTENTS

General Information	4
Educational Stipends	4
Poster Presentations/Exhibit Hall Activities	5
Award Recipients.....	6
Program Committee	8
Physician Program	9
Pharmacist Program.....	14
Advanced Practitioner Program.....	17
Nephrology Nurse and Technician Program.....	22
National Association of Nephrology Technicians/Technologists Program	26
Renal and Clinical Dietitian Program.....	27
Nephrology Social Worker Program	31
Transplant Professional Program	35
Registration Information	38
Hotel Accommodations.....	39
Team Kidney 5K Fun Run	40
Faculty	41

Pre-Conference Courses

Tuesday, April 10

General Sessions

Wednesday, April 11 – Saturday, April 14

Advance Registration Deadline: **January 26, 2018**

To register, visit **nkfclinicalmeetings.org**

NEW FEATURES

- New Pre-Conference Courses on Living and Working with CKD, Substance Use Disorders, and Discussing Violence in the Dialysis Center
- Live Streaming of Select Sessions
- New Interactive E-Poster Platform!
- Session Partnership with American Foundation for Donation and Transplantation
- Program Partnership with the National Association of Nephrology Technicians/Technologists
- Increased Number of Inter-professional Sessions

GENERAL INFORMATION

Meeting Site

The headquarters for the NKF 2018 Spring Clinical Meetings (SCM18) is the Austin Convention Center in Austin, TX. The city of Austin is rich in history as well as the Live Music Capital of the World. It hosts over 10 national historic districts. The Austin Convention Center is in the heart of the city, with an easy walk to the Capitol Building.

Target Audience

SCM18 is designed for nephrologists in private practice and academia, general internists, fellows and residents, pharmacists, physician assistants, nephrology nurses, technicians, nurse practitioners, nephrology social workers, renal and clinical dietitians, and transplant coordinators.

Meeting Objectives

At the conclusion of this activity, participants will be able to:

- ◆ Identify recent changes in healthcare policy and advances in clinical and translational research, and discuss how these may have an impact on the care of patients with kidney disease
- ◆ Integrate new discoveries in dialysis and non-dialysis chronic kidney disease, transplantation, hypertension, and other risk factors into clinical practice
- ◆ Enhance skills of the inter-professional team to encourage collaborative care, thereby improving outcomes of patients with kidney disease

Disclosure and Conflict of Interest Policy

It is the policy of the National Kidney Foundation (NKF) to ensure balance, independence, objectivity, and scientific rigor in all CME/CE activities. Any individual who has control over CME/CE content is required to disclose to learners any relevant financial relationship(s) they or their family members may have with commercial interests supporting this activity or whose products or devices are discussed in this activity. If, on the basis of information disclosed, a conflict exists, resolution will be achieved based on established policies by NKF. Accredited status does not imply endorsement by NKF or ANCC of any commercial products displayed in conjunction with this activity.

Faculty members are also required to disclose to the activity audience when an unlabeled use of a commercial product, or an investigational use not yet approved for any purpose, is discussed during an educational activity. The intent of this disclosure is to provide attendees with information prior to their participation in the educational activity, and allow the audience to be fully informed in the evaluation of the information being presented. The SCM18 Mobile App will note those individuals who have disclosed relationships, including the nature of the relationships and the associated commercial entities. This information will also be presented to the audience prior to the activity via podium announcement and slide presentation.

NKF's Expectation of Authors and Presenters

The Spring Clinical Meetings promote excellence in kidney healthcare. NKF expects that all authors and presenters affiliated with the NKF 2018 Spring Clinical Meetings will provide informative and fully accurate content that reflects the highest levels of scientific rigor and integrity.

Educational Stipends for Nurse Practitioners, Physician Assistants, Nurses, Technicians, Dietitians, and Social Workers

As part of their commitment to support continuing education, the **NKF Council of Advanced Practitioners (CAP)**, **Council of Nephrology Nurses and Technicians (CNNT)**, **Council on Renal Nutrition (CRN)**, and **Council of Nephrology Social Workers (CNSW)** will accept applications from NKF members for educational stipends of up to \$500 – \$1,000 (based on discipline) to assist in attending SCM18. Stipends will be awarded on a first-come, first-serve basis. Persons presenting original research or abstracts may be given preference. The amount of the stipend will be based on travel distance. For an application and submission requirements, please visit: www.nkfclinicalmeetings.org. **Applications must be submitted by January 12, 2018.**

Networking Luncheons

Kick off SCM18 with your colleagues at the Networking Luncheons! Join your colleagues to learn, meet and greet each other at these special events, which are hosted by the NKF Professional Councils: CAP, CNNT, CRN, and CNSW. All are welcome. The CRN and CNSW luncheons will be held on **Wednesday, April 11**, from **12:00pm to 2:00pm**. The CAP and CNNT luncheons will be held **Thursday, April 12**, from **12:00pm to 2:00pm**.

Sponsorship

Companies interested in supporting the NKF 2018 Spring Clinical Meetings should contact Stephanie Cogan, Vice President, Corporate Relations, at StephanieC@kidney.org or 212.889.2210 ext. 166.

Poster Presentations and Exhibit Hall Activities

The 2018 posters will be available for viewing in the Exhibit Hall beginning on **Wednesday, April 11**, at **6:00pm** through **Friday, April 13, at 10:00am**. Take advantage of this outstanding opportunity to earn 1.0 CME/CE credit/contact hour, share in the authors' research experiences, and discuss significant advances in the field of kidney disease.

POSTER PRESENTATIONS & EXHIBIT HALL ACTIVITIES*

Wednesday, April 11	6:00pm – 7:30pm	Opening Ceremonies and Faculty Reception – Poster Authors Available for Q&A
<hr/>		
Thursday, April 12	7:00am – 8:30am	Continental Breakfast; Visit Posters/Exhibits
	12:00pm – 2:00pm	Lunch Served 12:00pm–1:30pm; Visit Posters/Exhibits
	5:30pm – 7:00pm	Networking Reception; Visit Posters/Exhibits
<hr/>		
Friday, April 13	7:00am – 10:00am	Breakfast Served until 8:30am; Visit Posters/Exhibits
	10:00am	Exhibit Hall Closes

*Hours subject to change.

2018 AWARD RECIPIENTS

Congratulations to the NKF SCM18 Award Winners!



The Donald W. Seldin Award
Jeffrey Berns, MD, FNKF
University of Pennsylvania
Philadelphia, PA



The Shaul G. Massry Distinguished Lecture
Krista Lentine, MD, PhD
Saint Louis University
Saint Louis, MO



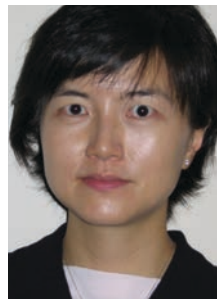
The David M. Hume Memorial Award
Glenn Chertow, MD
Stanford University School of Medicine
Palo Alto, CA



The Garabed Eknayan Award
Lesley Inker, MD
Tufts Medical Center
Boston, MA



The J. Michael Lazarus Distinguished Award
Alan Kliger, MD
Hospital of St. Raphael
New Haven, CT



The Joel D. Kopple Award
Angela Yee Moon Wang, MD, PhD, FRCP
University of Hong Kong
Queen Mary Hospital
Hong Kong, China



The Medical Advisory Board Distinguished Service Award
Harry Senekjian, MD, FACP, FNKF
University of Utah Hospital
Salt Lake City, Utah



Celest Castillo Lee Patient Engagement Award
Risa Simon
Transplant First
Scottsdale, AZ

Biographical information about the Award Winners can be found at nkfclinicalmeetings.org

PROFESSIONAL COUNCIL AWARDS

Council of Advanced Practitioners

Tim Poole Memorial Award

Jo Ann Palmer, CRPN, MSN, CCTC
Children's Hospital of Philadelphia, Philadelphia, PA

Nostradamus Award

Clinician Reviews

Council of Nephrology Social Workers

Lifetime Achievement Award

Maureen McKinley, MSW, LCSW
DaVita Healthcare, Lake Forest, CA

Award for Social Work in a Transplant Setting

Colleen Satarino, LMSW, CCTSW
University of Michigan Hospital, Ann Arbor, MI

Award for Social Work in a Pediatric Setting

Kelli Scott, LMSW
Children's Mercy Hospital, Kansas City, MO

Merit Award

Vernon Silva, LCSW, NSW-C
U.S. Renal Care, San Pedro, CA

Deborah Collinsworth, LAPSW, NSW-C
Dialysis Clinic Inc, Jackson, TN

Janice Malofsky-Berlowe, LCSW, NSW-C
FKC Burbank Dialysis, North Hollywood, CA

Regional Social Work Award

Region I

Sarah Stevenson, LICSW, NSW-C
Providence VA Medical Center
Providence, RI

Region II

Marquetta Martin-Earl, LMSW
DaVita Spivy
Stockbridge, GA

Region IV

Angela Smith, LCSW, ACSW
DaVita Northwest Bethany
Bethany, OK

Council of Nephrology Nurses and Technicians

Outstanding Nurse Award

Portia Erickson, RN
Richard L. Roudebush VA Medical Center
Indianapolis, IN

Outstanding Dialysis Technician Award

Tina Cannavo, CCHT
Tri-State Dialysis
Dubuque, IA

Council on Renal Nutrition

Outstanding Service Award

Beth Shanaman, RD, FNKF
Northwest Kidney Centers
Seattle, WA

Susan C. Knapp Award

Kathy Harvey, MS, RDN, CSR
Puget Sound Kidney Centers
Mountlake Terrace, WA

Recognized Renal Dietitian Award

Brenda Murphy, RD, MEd
US Renal Care
Avondale, AZ

Regional Recognized Renal Dietitian Award

Region I

Judy Kirk, MS, RDN, CDN, CSR, FNKF
Rochester Regional Health
Rochester, NY

Region III

Cynthia Clancy, MS, RD, LD
Fresenius Medical Care
Saint Ann, MO

Region V

Belinda Sanchez, RD, ARA
Madera Kidney Center
Fresno, CA

Region II

Wai Yin Ho, MEd, MS, RDN
Pentec Health Inc.
Summerville, SC

Region IV

Maria Veronica Prado, RD, LD
Pentec Health
San Antonio, TX

PROGRAM COMMITTEE

Lawrence Weisberg, MD, FNKF

Program Chair
Cooper Health System
Camden, NJ

Harold Szerlip, MD, FNKF

Program Co-Chair
Baylor Scott & White Health
Dallas Nephrology Associates
Dallas, TX

Kenneth Abreo, MD, FASDIN

Louisiana State University
Shreveport, LA

Kevin Ceckowski, MSW, LMSW, FNKF

Nephrology Social Work Program Co-Chair
Walter Reed National Military Medical Center
Bethesda, MD

Tara Chang, MD, FNKF

Stanford University Medical Center
Stanford, CA

Robert Cohen, MD

Beth Israel Deaconess Medical Center, Boston, MA

Darlene Dobkowski, PA-C, RN, FNKF

Advanced Practitioner Program Chair
Advanced Interventional Radiology Services, Wayne, NJ

Catherine Firanek, BSN, MBA, FNKF

Nephrology Nurse and Technician Program Co-Chair
Baxter Healthcare
Deerfield, IL

Jennifer Flythe, MD, MPH

UNC Kidney Center
Chapel Hill, NC

Joel Glickman, MD, FNKF

University of Pennsylvania
Philadelphia, PA

Nathalie Harden

Director, CME
National Kidney Foundation
New York, NY

Debra Hain, PhD, APRN, AGPCNP-BC, FAANP, FNKF

Advanced Practitioner Program Co-Chair
Florida Atlantic University and Cleveland Clinic
Coconut Creek, FL

Jonathan Hogan, MD

University of Pennsylvania
Philadelphia, PA

Joanna Hudson, PharmD, BCPS, FASN, FCCP, FNKF

University of Tennessee Health Science Center, Memphis, TN

Bernard Jaar, MD, MPH, FNKF

Johns Hopkins University
Baltimore, MD

Kenar Jhaveri, MD, FNKF

Hofstra Northwell School of Medicine
Great Neck, NY

Jessica Joseph, MBA

Vice President, Scientific Activities
National Kidney Foundation
New York, NY

Jennifer McClain, MSW, LSW, NSW-C, FNKF

Nephrology Social Work Program Chair
Fresenius Medical Care – Fire Mesa Dialysis
Las Vegas, NV

Beth Morlang, RD, LD, FNKF

Renal and Clinical Dietitian Program Co-Chair
Central Florida Kidney Centers, Inc.
Palm Bay, FL

Danielle Nathan

Professional Education Director
National Kidney Foundation
New York, NY

Marianne Neumann, RN, CNN, FNKF

Nephrology Nurse and Technician Program Chair
Marquette General/Albany Regional Kidney Center
Rensselaer, NY

Kalani Raphael, MD, MS, FNKF

University of Utah
Salt Lake City, UT

Deirdre Sawinski, MD, FAST

Hospital of the University of Pennsylvania
Philadelphia, PA

Julia Schrogin

Scientific Activities Manager
National Kidney Foundation
New York, NY

Beth Shanaman, RD, FNKF

Renal and Clinical Dietitian Program Chair
Northwest Kidney Centers
Seattle, WA

Kathryn Troy, MPH

Professional Education Coordinator
National Kidney Foundation
New York, NY

Delphine Tuot, MDCM, MAS, FNKF

University of California
San Francisco
San Francisco, CA

Jaime Uribarri, MD

Icahn School of Medicine at Mount Sinai
New York, NY

Ronald Wald, MD, MPH

St. Michael's Hospital
Toronto, ON, Canada

Ex Officio

Michael Choi, MD, FNKF

NKF President
Johns Hopkins University School of Medicine
Baltimore, MD

Joseph Vassalotti, MD, FNKF

Chief Medical Officer
National Kidney Foundation
New York, NY

Physician Program

Accreditation Statement



In support of improving patient care, the National Kidney Foundation is jointly accredited by the Accreditation Council for Continuing Medical Education (ACCME), the Accreditation Council for Pharmacy Education (ACPE), and the American Nurses Credentialing Center (ANCC) to provide continuing education for the healthcare team.

Designation Statement

The National Kidney Foundation designates this live activity for a maximum of 24.25 AMA PRA Category 1 Credits™. Physicians should claim only the credit commensurate with the extent of their participation in the activity.

Note: Acquiring 24.25 credits requires continuous participation from Wednesday morning through Saturday morning. Many participants opt for periodic breaks, which make their credits somewhat less. Additional credits are provided for courses requiring separate registration.*

*As of October 2017

evaluation, and management of post-transplant complications. National experts will discuss current policies and best practices to expand transplant options, evaluate and select donors and recipients, and optimize care before, during, and after transplantation.

Successful Dialysis: Who, What, Where, When, and How

Course Directors: Jennifer Flythe, MD, MPH, and Jeffrey Perl, MD, SM, FRCPC

7:30am – 5:00pm

Session 221, 8.5 credits

Target Audience: Designed for nephrologists, nephrology fellows, advanced practitioners, and nephrology nurses (essentially, anyone who is interested in caring for people with kidney failure).

Course Description: This course will deliver a comprehensive update in current dialysis management. The speakers are experts in varied aspects of dialysis care and will review current best practices, complications and common pitfalls in dialysis management. Attendees will benefit from case-based reviews and discussions ranging from the optimal timing of dialysis initiation, choosing the appropriate dialysis prescription, access management, and complications of peritoneal dialysis and hemodialysis.

Pre-Conference Courses

Tuesday, April 10

REQUIRED: Separate registration fee of \$200 for NKF Members, \$225 for Non-Members, \$100 for Fellows and Residents; includes light breakfast, box lunch, and CME credits. Participation is limited, so register early.

Pricing

Half-Day Courses: \$60 NKF Members, \$75 Non-Members, \$40 Fellows/Residents

Full-Day Courses: \$200 NKF Members, \$225 Non-Members, \$100 Fellows/Residents

Transplant Update: 2018

Course Director: Deirdre Sawinski, MD, FAST

7:30am – 5:15pm

Session 220, 7.75 credits

Target Audience: Designed for community nephrologists, transplant nephrologists, general and transplant nephrology fellows, transplant coordinators, and other professionals involved in the care of kidney transplant candidates, recipients, and living donors.

Course Description: This course is designed to offer the attendee a comprehensive overview of contemporary issues in immunosuppression, donor selection, recipient

Basics of Vascular Access: The Practical Essentials

Course Directors: Kenneth Abreo, MD, and

Anil Agarwal, MD, FACP, FASN, FNKF

7:30am – 12:30pm

Session 223, 4.75 credits

Target Audience: The target audience for this course is physicians, physician assistants, nurse practitioners, nurses, and dialysis technicians who take care of hemodialysis patients.

Course Description: This course aims to create an informal training curriculum on dialysis vascular access, as well as deliver a comprehensive overview on the “nitty-gritties” in managing optimal access care. Attendees will benefit from case-based reviews and discussions, ranging from vascular anatomy, planning of vascular access, monitoring for access dysfunction, strategies to manage primary and secondary failures, local and systemic complications secondary to permanent AV access, and various treatment options to salvage a failing vascular access. The speakers are experts and leaders in the field of dialysis vascular access.



@NKFClinicals #NKFClinicals

PRELIMINARY PROGRAM 9

Point-of-Care Ultrasound for the Nephrologist

Course Directors: Kenar Jhaveri, MD, FNKF, and Daniel Ross, MD

Session 224, 7:30am – 12:30pm

Session 226, 1:00pm – 6:00pm

4.25 credits

Target Audience: Designed for physicians, fellows, and residents.

Course Description: The renal consultant needs knowledge of lung ultrasound to determine volume status, renal and bladder ultrasounds to evaluate for obstruction, and knowledge of vascular access guidance to assist in placement of catheters. This course will focus on the following elements in point-of-care ultrasonography.

- **Image acquisition** will be practiced on human models using high-quality ultrasound machines, and supervised by experienced faculty. Training sessions give you practical, hands-on training with a 1:3 teacher-to-learner ratio, so that the learner will benefit from personal instruction.
- **Image interpretation** during group sessions, under the supervision of experienced faculty members will offer relevant practice. Numerous ultrasound images demonstrating normal and pathologic findings will provide a comprehensive learning opportunity. As participants improve their skills, they will be further challenged with unknowns and case-based image sets.
- **Knowledge base** will be enhanced with lectures that focus on important aspects of point-of-care ultrasonography applicable to the renal consultant. Discussions will have immediate application within learner's practice.

Glomerular Diseases: Updates on Pathogenesis and Treatment

Course Directors: Gerald Appel, MD, FNKF, Fernando Fervenza, MD, PhD, FNKF, and Jonathan Hogan, MD

8:00am – 6:00pm

Session 225, 9.25 credits

Target Audience: Designed for nephrologists, nephrology fellows and advanced practitioners.

Course Description: In the last few years, a number of new diagnostic and therapeutic tools have emerged. Practicing nephrologists will greatly benefit by having an update regarding their utility in the diagnosis and management of patients with glomerular diseases. The course format includes lectures, question-and-answer sessions, case-based discussions, and panel sessions to review this evidence. Faculty are composed of outstanding teachers who are experts in their respective fields. The course should be of special interest to nephrologists who deal with patients with glomerular diseases, or are looking for an update on the subject.

Critical Care Nephrology

Course Director: Laurie Benton, PhD, MPAS, PA-C, RN, FNKF

7:30am – 5:30pm

Session 620, 8.75 credits

Target Audience: Designed for physicians, nephrology fellows, residents, and advanced practitioners.

Course Description: This course is designed to offer the attendee an improved understanding of the unique role of the nephrology intensivist in the acute care hospital. The management of the decompensated cardiac patient to the management of the critically ill hepatorenal patient, lectures will cover various aspects of the diagnosis, treatment and outcomes of the ICU patient. Lectures and case presentations on Acute Kidney Injury (AKI), Renal Replacement Therapy (RRT), pulmonary renal, and many more topics will be discussed.

Lunch Workshops

REQUIRED: Separate registration fee of \$50; includes box lunch and CME credits. Participation is limited to 75 each, so register early.

Wednesday, April 11, 12:00pm – 2:00pm

A Stitch in Time Saves Nine: Preventing, Detecting and Treating Access Dysfunction Session 230

Chair: Gerald Beathard, MD, PhD

Presenter(s): Anil Agarwal, MD, FACP, FASN, FNKF, FASDIN, Bharat Sachdeva, MD, Gerald Beathard, MD, PhD, and Charmaine Lok, MD, FNKF

Workshop Description: The common clinical problems associated with hemodialysis vascular access will be discussed during this lunch workshop. Ipsilateral arm swelling after placement of a permanent vascular access is of concern to patients and needs prompt management. TDC-associated infections lead to serious morbidity and mortality and need immediate treatment. Placement of secondary AVFs, early-stick and Hero grafts, and percutaneously created AVFs will decrease dependence on TDCs.

Glomerular Disease in 2018 – Where Are We Now, and Where Are We Going? Session 231

Chairs: Jonathan Hogan, MD, and Rupali Avasare, MD

Presenter(s): Andrew Bomback, MD, MPH, Laurence Beck, Jr., MD, PhD, FNKF, and Jonathan Hogan, MD

Workshop Description: This interactive lunch workshop will use case-based learning to highlight three important and complex glomerular diseases: membranous nephropathy, ANCA associated vasculitis and paraprotein-associated kidney disease. The presenters are experts who will review how recent advances have changed the paradigm of approaching these diseases, and how future research could revolutionize the way they are managed. Participants will gain an understanding of the use of biomarkers and novel, targeted therapies in these disorders.

Obstetric Nephrology: A Case Based Approach Session 232

Chair: Mala Sachdeva, MD

Presenter(s): Vesna Garovic, MD, Mala Sachdeva, MD, Paige M. Porrett, MD, PhD, and Mandy Trolinger, MS, RD, PA-C, FNKF

Workshop Description: This workshop will update the clinician on various venues where pregnant patients interact with the nephrologists. Topics range from chronic

kidney disease care to treating pregnant patients on dialysis and transplant. A case-based approach with state-of-the-art speakers will allow for an informative discussion on hypertension, kidney disease, and nutritional aspects of the pregnant patient who has kidney disease.

Critical Care Medicine for the Nephrologist Session 233

Chairs: Ronald Wald, MD, MPH, and Paul M. Palevsky, MD, FNKF

Presenter(s): Dan Negoianu, MD, Kathleen Liu, MD, and Sean Bagshaw, MD, MSc, FRCPC

Workshop Description: Nephrologists and advanced practitioners are frequent consultants in the ICU. This interactive workshop will provide participants with an update on the key developments in critical care medicine that are of relevance to practicing nephrologists. This will include a review of the major contributions to the critical care literature over the past year, in addition to focused discussions on the management of sepsis and intra-abdominal hypertension/abdominal compartment syndrome in critically ill patients.

Friday, April 13, 12:00pm – 1:30pm

Renal Emergencies in the Cancer Patient: A Case-Based Session Session 234

Chairs: Mark Perazella, MD, FACP

Presenter(s): Mitch Rosner, MD, Rimda Wanchoo, MD, and Mark Perazella, MD, FACP

Workshop Description: This workshop will update the clinician on three acute emergencies that face the physician in a cancer patient: tumor lysis syndrome, hypercalcemia and various forms of acute kidney injury. The session will be case based with interactive features and world-renowned speakers.

Teach Each Other Well: Improving Communication Between Providers and Patients/Family Members Session 235

Chairs: Vanessa Grubbs, MD, MPH, and Jennifer Scherer, MD

Presenter(s): Robert Cohen, MD, and Jane Schell, MD, FNKF

Workshop Description: This interactive workshop will teach communication tools for challenging conversations between nephrology providers and patients and family members regarding end-stage kidney disease decisions. Cases will be discussed to highlight skills that can be used for these difficult discussions.



Acid-base and Electrolyte Cases

Session 236

Chairs: Kalani Raphael, MD, MS, FNKF, and Delphine Tout, MDCM, MAS, FNKF

Presenter(s): Mike Emmett, MD, MACP, and Alan Yu, MD, MB, BChir

Workshop Description: During this workshop, a variety of common and uncommon acid-base and electrolyte cases will be presented by experts in the field. Using an interactive approach, participants will be challenged to determine next steps as each case progresses, identify the diagnosis, and select the most appropriate treatment plan.

Improving Nephrology Education

Session 237

Chair: Laura Maursetter, DO

Presenter(s): Ali Poyan Mehr, MD, Laura Maursetter, DO, and Swapnil Hiremath, MD, MPH

Workshop Description: This session will enhance and enlighten the attendee on novel online and classroom methods to improve nephrology education at student, resident, fellow and continuing medical education level. Practical teaching strategies will be discussed that will improve your skill set to take back to your academic institutions.

Physician Program

Tuesday, April 10

TIME	SESSION #	SESSION	NOTES
7:30am – 5:15pm	220	Transplant Update: 2018	●
7:30am – 5:30pm	620	Critical Care Nephrology	●
7:30am – 5:00pm	221	Successful Dialysis: Who, What, Where, When and How	●
7:30am – 12:30pm	223	Basics of Vascular Access: The Practical Essentials	●
7:30am – 12:30pm	224	Point-of-Care Ultrasound for the Nephrologist	●
8:00am – 6:00pm	225	Glomerular Diseases: Updates on Pathogenesis and Treatment	●
1:00pm – 6:00pm	226	Point-of-Care Ultrasound for the Nephrologist	●
6:30pm – 8:30pm	100	Fellows Networking Reception/Career Choices in Nephrology	

Wednesday, April 11

TIME	SESSION #	SESSION	NOTES
8:00am – 9:30am	260	Debate: Do Not Set Sail Without a Compass: Planning the Best Access at the Right Time	
8:00am – 9:30am	261	Special Topics in Acid-Base and Electrolyte Disorders	◇
8:00am – 9:30am	262	From B Cell to Bedside	◇
9:30am – 10:00am		Break	
10:00am – 11:30am	263	Hot Topics in Acute Kidney Injury	◇
10:00am – 11:30am	264	A Case-Based Approach to Managing Immunosuppression in Glomerular Disease	◇
10:00am – 11:30am	265	Breaking Bad: Overcoming Barriers for Nephrology Education	
11:30am – 12:00pm		Break	
12:00pm – 2:00pm	230	Workshop: A Stitch in Time Saves Nine: Preventing, Detecting, and Treating Access Dysfunction	●
12:00pm – 2:00pm	231	Workshop: Glomerular Disease in 2018 – Where Are We Now, and Where Are We Going?	● ◇
12:00pm – 2:00pm	232	Workshop: Obstetric Nephrology: A Case-Based Approach	●
12:00pm – 2:00pm	233	Workshop: Critical Care Medicine for the Nephrologist	● ◇
2:00pm – 2:15pm		Break	
2:15pm – 4:00pm	266	Keynote Address: Working Together to Deliver High-Value Care and Shaul G. Massry Distinguished Lecture	
4:00pm – 4:15pm		Break	
4:15pm – 5:45pm	267	KDOQI 20th Anniversary – Guidelines/Updates	◇

Wednesday, April 11 (Continued)

TIME	SESSION #	SESSION	NOTES
4:15pm – 5:45pm	268	Expanding Access to Transplant: New Perils, New Opportunities	◇
4:15pm – 5:45pm	269	Dispelling the Myths of PD	
6:00pm – 7:30pm		Opening Ceremonies and Reception in the Exhibit Hall – Visit Posters/Exhibits	

Thursday, April 12

TIME	SESSION #	SESSION	NOTES
7:00am – 8:30am		Continental Breakfast in the Exhibit Hall – Visit Posters/Exhibits	
8:30am – 10:00am	270	The Delivery of Renal Replacement Therapy in the ICU	◇
8:30am – 10:00am	271	The Living Donor: Ethics, Risks, and Overcoming Barriers	
8:30am – 10:00am	272	Gender Differences in Hypertension	◇
10:00am – 10:30am		Break	
10:30am – 12:00pm	273	Patient-Reported Outcomes: A New Era in Research and Clinical Care	◇
10:30am – 12:00pm	274	Home Hemodialysis: Focus on the Patient	
10:30am – 12:00pm	665	Diabetes and Beyond	
12:00pm – 2:00pm		Break in the Exhibit Hall – Lunch Served 12:00pm – 1:30pm	
12:15pm – 2:00pm	275	Cases on Difficult Topics (Residents and Fellows)	
2:00pm – 3:30pm	276	Do No Harm! Avoiding Medication Errors in Patients with Chronic Kidney Disease	◇
2:00pm – 3:30pm	277	Social Determinants at the Bedside	
2:00pm – 3:30pm	278	Poster Tour for Residents and Fellows	
3:30pm – 4:00pm		Break	
4:00pm – 5:30pm	279	Please Pass the Salt – or Not? Debate on Sodium Intake	◇
4:00pm – 5:30pm	280	How Can We Deliver Palliative Care to Our Patients: A Practical Team Approach	◇
5:30pm – 7:00pm		Networking Reception in the Exhibit Hall – Visit Posters/Exhibits	

Friday, April 13

TIME	SESSION #	SESSION	NOTES
7:00am – 10:00am		Break in the Exhibit Hall (Breakfast Served 7:00am – 8:30am) – Visit Posters/Exhibits	
8:45am – 9:45am	281	Quality and Safety in Dialysis: Emphasis on Achieving Zero Preventable Infections	◇
9:45am – 10:00am		Break	
10:00am – 11:30am	282	KDOQI Commentary on the KDIGO CKD MBD Guidelines	◇
10:00am – 11:30am	283	New Models of Renal Care: A Panel Discussion	
11:30am – 12:00pm		Break	
12:00pm – 1:30pm	234	Workshop: Renal Emergencies in the Cancer Patient: A Case-Based Session	● ◇
12:00pm – 1:30pm	235	Workshop: Teach Each Other Well: Improving Communication Between Providers and Patients/Family Members	●
12:00pm – 1:30pm	236	Workshop: Acid-base and Electrolyte Cases	● ◇
12:00pm – 1:30pm	237	Workshop: Improving Nephrology Education	●
1:30pm – 2:00pm		Break	
2:00pm – 3:30pm	284	Peripheral Arterial Disease: A Silent Epidemic in CKD	
2:00pm – 3:30pm	285	Medication Conundrums in Chronic Kidney Disease	◇
3:30pm – 4:00pm		Break	
4:00pm – 5:30pm	286	Hypertension Treatment in the 21st Century	◇
4:00pm – 5:30pm	287	Peritoneal Dialysis First	

Saturday, April 14

TIME	SESSION #	SESSION	NOTES
6:00am – 7:30am		Team Kidney 5K Fun Run	•
8:30am – 10:00am	288	The Smooth Road Home: Fix Operational Potholes	◇
8:30am – 10:00am	289	What Should Be the Main Target to Control for Metabolic Bone Disease in CKD?	◇
10:00am – 10:30am		Break	
10:30am – 12:00pm	290	Hospital U-Turns: Readmissions in Dialysis Patients	◇
10:30am – 12:00pm	291	Tailoring Antibiotic Regimens for Distinct RRT Modalities: It's Not Just About Dose!	◇
12:00pm		Meeting Adjourns	

• Separate Registration and/or Fee Required ◇ ABIM MOC Points Offered

Visit nkfclinicalmeetings.org for additional program details and up-to-date information on SCM18.

Pharmacist Program



In support of improving patient care, the National Kidney Foundation is jointly accredited by the Accreditation Council for Continuing Medical Education (ACCME), the Accreditation Council for Pharmacy Education (ACPE), and the American Nurses Credentialing Center (ANCC) to provide continuing education for the healthcare team.

Lunch Workshops

REQUIRED: Separate registration fee of \$50; includes box lunch and CME credits. Participation is limited to 75 each, so register early.

Wednesday, April 11, 12:00pm – 2:00pm

Glomerular Disease in 2018 – Where Are We Now, and Where Are We Going?

Session 231

Chairs: Jonathan Hogan, MD, Rupali Avasare, MD

Presenter(s): Andrew Bomback, MD, MPH, Laurence Beck, Jr., MD, PhD, FNKF, and Jonathan Hogan, MD

Workshop Description: This interactive lunch workshop will use case-based learning to highlight three important and complex glomerular diseases: membranous nephropathy, ANCA associated vasculitis, and paraprotein-associated kidney disease. The presenters are experts who will review how recent advances have changed the paradigm of approaching these diseases, and how future research could revolutionize the way they are

managed. Participants will gain an understanding of the use of biomarkers and novel, targeted therapies in these disorders.

Critical Care Medicine for the Nephrologist Session 233

Chairs: Ronald Wald, MD, MPH, and Paul M. Palevsky, MD, FNKF

Presenter(s): Dan Negoianu, MD, Kathleen Liu, MD, and Sean Bagshaw, MD, MSc, FRCPC

Workshop Description: Nephrologists and advanced practitioners are frequent consultants in the ICU. This interactive workshop will provide participants with an update on the key developments in critical care medicine that are of relevance to practicing nephrologists. This will include a review of the major contributions to the critical care literature over the past year, in addition to focused discussions on the management of sepsis and intra-abdominal hypertension/abdominal compartment syndrome in critically ill patients.

Friday, April 13, 12:00pm – 1:30pm

Renal Emergencies in the Cancer Patient: A Case-Based Session Session 234

Chairs: Mark Perazella, MD, FACP

Presenter(s): Mitch Rosner, MD, Rimda Wanchoo, MD, and Mark Perazella, MD, FACP

Workshop Description: This workshop will update the nephrologists on three acute emergencies that face the physician in a cancer patient: tumor lysis syndrome, hypercalcemia and various forms of acute kidney injury. The session will be case based with interactive features and world-renowned speakers.

Acid-base and Electrolyte Cases Session 236

Chairs: Kalani Raphael, MD, MS, FNKF, and Delphine Tout, MDCM, MAS, FNKF

Presenters: Mike Emmett, MD, and Alan Yu, MB, BChir

Workshop Description: During this workshop, a variety of common and uncommon acid-base and electrolyte

cases will be presented by experts in the field. Using an interactive approach, participants will be challenged to determine next steps as each case progresses, identify the diagnosis, and select the most appropriate treatment plan.

Catching the Beat, Understanding Common Arrhythmias and the Treatment Session 630

Chair: Laurie Benton, PhD, MPAS, PA-C, RN, FNKF

Presenter(s): Justin Prince DHSc, PA-C, and Kristine Haugh, DNP, AGACNP-BC

Workshop Description: Ventricular and supraventricular arrhythmias are very common in ESRD patients, much more so than the general population. In fact, those with ESRD are at high risk for bradycardia and sudden death. In this workshop, we will explore the most common dysthymias encountered in the renal patient. We will explore techniques for confidently identifying these occurrences in and inpatient setting with interactive scenarios. Lastly, we will review the current recommendations for when to treat, how to treat and when to observe.

Pharmacist Program

Wednesday, April 11

TIME	SESSION #	SESSION	NOTES
8:00am – 9:30am	261	Special Topics in Acid-Base and Electrolyte Disorders	
8:00am – 9:30am	262	From B Cell to Bedside	
9:30am – 10:00am		Break	
10:00am – 11:30am	263	Hot Topics in Acute Kidney Injury	
10:00am – 11:30am	264	A Case-Based Approach to Managing Immunosuppression in Glomerular Disease	
10:00am – 11:30am	662	Heart of the Matter: Cardiorenal and Hypertension	
11:30am – 12:00pm		Break	
12:00pm – 2:00pm	231	Workshop: Glomerular Disease in 2018 – Where Are We Now, and Where Are We Going?	•
12:00pm – 2:00pm	233	Workshop: Critical Care Medicine for the Nephrologist	•
2:00pm – 2:15pm		Break	
2:15pm – 4:00pm	266	Keynote Address: Working Together to Deliver High-Value Care and Shaul G. Massry Distinguished Lecture	
4:00pm – 4:15pm		Break	
4:15pm – 5:45pm	268	Expanding Access to Transplant: New Perils, New Opportunities	
6:00pm – 7:30pm		Opening Ceremonies and Reception in the Exhibit Hall – Visit Posters/Exhibits	

Thursday, April 12

TIME	SESSION #	SESSION	NOTES
7:00am – 8:30am		Continental Breakfast in the Exhibit Hall – Visit Posters/Exhibits	
8:30am – 10:00am	270	The Delivery of Renal Replacement Therapy in the ICU	
8:30am – 10:00am	272	Gender Differences in Hypertension	
8:30am – 10:00am	663	It's All About That Base: Understanding Acid/Base	
8:30am – 10:00am	566	Hyperphosphatemia: Don't Blame the Patient	
10:00am – 10:30am		Break	

Thursday, April 12 (Continued)

TIME	SESSION #	SESSION	NOTES
10:30am – 12:00pm	273	Patient-Reported Outcomes: A New Era in Research and Clinical Care	
10:30am – 12:00pm	665	Diabetes and Beyond	
12:00pm – 2:00pm		Break in the Exhibit Hall – Lunch Served 12:00pm – 1:30pm	
2:00pm – 3:30pm	276	Do No Harm! Avoiding Medication Errors in Patients with Chronic Kidney Disease	
2:00pm – 3:30pm	667	New Concepts in Managing Metabolic Bone Disease	
2:00pm – 3:30pm	668	Remembering the -oscopies: Incorporating Primary Care into Your Nephrology Practice	
3:30pm – 4:00pm		Break	
4:00pm – 5:30pm	279	Please Pass the Salt – or Not? Debate on Sodium Intake	
4:00pm – 5:30pm	280	How Can We Deliver Palliative Care to Our Patients: A Practical Team Approach	
4:00pm – 5:30pm	669	Superbugs and Drugs in CKD	
5:30pm – 7:00pm		Networking Reception in the Exhibit Hall – Visit Posters/Exhibits	

Friday, April 13

TIME	SESSION #	SESSION	NOTES
7:00am – 10:00am		Break in the Exhibit Hall (Breakfast Served 7:00am – 8:30am) – Visit Posters/Exhibits	
8:45am – 9:45am	281	Quality and Safety in Dialysis: Emphasis on Achieving Zero Preventable Infections	
9:45am – 10:00am		Break	
10:00am – 11:30am	282	KDOQI Commentary on the KDIGO CKD MBD Guidelines	
10:00am – 11:30am	670	Flow in the Know: Anemia and Diuretic Therapy Management	
10:00am – 11:30am	671	Geriatric Syndromes	
11:30am – 12:00pm		Break	
12:00pm – 1:30pm	234	Workshop: Renal Emergencies in the Cancer Patient: A Case-Based Session	•
12:00pm – 1:30pm	236	Workshop: Acid-base and Electrolyte Cases	•
12:00pm – 1:30pm	630	Catching the Beat, Understanding Common Arrhythmias and the Treatment	•
1:30pm – 2:00pm		Break	
2:00pm – 3:30pm	285	Medication Conundrums in Chronic Kidney Disease	
3:30pm – 4:00pm		Break	
4:00pm – 5:30pm	286	Hypertension Treatment in the 21st Century	
4:00pm – 5:30pm	673	GI Challenges in Nephrology	
4:00pm – 5:30pm	573	True Guts: Gut Microbiome and What it Means to the Kidney	

Saturday, April 14

TIME	SESSION #	SESSION	NOTES
6:00am – 7:30am		Team Kidney 5K Fun Run	•
8:30am – 10:00am	288	The Smooth Road Home: Fix Operational Potholes	
8:30am – 10:00am	289	What Should be the Main Target to Control for Metabolic Bone Disease in CKD?	
10:00am – 10:30am		Break	
10:30am – 12:00pm	290	Hospital U-Turns: Readmissions in Dialysis Patients	
10:30am – 12:00pm	291	Tailoring Antibiotic Regimens for Distinct RRT Modalities: It's Not Just About Dose!	
12:00pm		Meeting Adjourns	

• Separate Registration and/or Fee Required.

Visit nkfclinicalmeetings.org for additional program details and up-to-date information on SCM18.

Advanced Practitioner Program

Planning Committee

Darlene Dobkowski, PA-C, RN, FNKF

Program Chair

Advanced Interventional Radiology Services
Wayne, NJ

Debra Hain, PhD, APRN, AGPCNP-BC, FAANP, FNKF

Program Co-Chair

Florida Atlantic University and Cleveland Clinic
Coconut Creek, FL

Laurie Benton, PhD, MPAS, PA-C, RN, FNKF

Baylor Scott and White Medical Center
Temple, TX

Lynne Gafford, FNP-BC, FNKF

Henry Ford Health System
Rochester Hills, MI

Joanne Hindlet, ACNP, BC CNN-NP, FNKF

Houston Nephrology Group
Houston, TX

Becky Ness, PA-C, FNKF

Mayo Clinic Health System
Mankato, MN

Barbara Weis Malone, DNP, FNP-C, FNKF

University of Colorado Denver Anschutz Medical Campus
Aurora, CO

Goal

To improve patient outcomes by enhancing advanced practitioners' knowledge base and skills that will have a direct impact on clinical practice in a variety of settings.

Continuing Education Information

This program will be submitted to the American Association of Nurse Practitioners.

AAPA accepts Category I credit from AOACCME, prescribed credit from AAFP, and AMA PRA Category I Credit(s)[™] from organizations accredited by ACCME. Physician assistants may receive a maximum of 24.25 hours of Category I credit for completing this program.

Note: Acquiring 24.25 hours requires continuous participation from Wednesday morning through Saturday morning. Many participants opt for periodic breaks, which make their credits/contact hours somewhat less. Additional credits/contact hours are provided for courses requiring separate registration.*

*As of October 2017

Pre-Conference Courses

Tuesday, April 10

REQUIRED: Separate registration fee (see below for pricing). Includes light breakfast and/or box lunch, and CME/CE credits/contact hours. Participation is limited, so register early.

Pricing

Half-Day Courses: \$60 NKF Members, \$75 Non-Members

Full-Day Courses: \$200 NKF Members, \$225 Non-Members

Critical Care Nephrology

Course Director: Laurie Benton, PhD, MPAS, PA-C, RN, FNKF

7:30am – 5:30pm

Session 620, 8.0 credits/contact hours

Target Audience: Designed for physicians, nephrology fellows, residents, and advanced practitioners.

Course Description: This course is designed to offer the

attendee an improved understanding of the unique role of the nephrology intensivist in the acute care hospital. The management of the decompensated cardiac patient to the management of the critically ill hepatorenal patient, lectures will cover various aspects of the diagnosis, treatment and outcomes of the ICU patient. Lectures and case presentations on Acute Kidney Injury (AKI), Renal Replacement Therapy (RRT), pulmonary renal, and many more topics will be discussed.

Nurse Practitioner Exam Review

Course Director: Katherine Houle, MSN, APRN, CFNP, CNN-NP, FNKF

7:30am – 12:00pm

Session 621, 3.5 credits/contact hours

Target Audience: Designed for nephrology nurse practitioners.

Course Description: This course is designed to offer the attendee a comprehensive review of the Nephrology

Nurses Certification Commission (NNCC) certification examination including test construction and item review. It will be interactive, using the audience response system to review exam questions. Discussion and rationale for each question will be reviewed.

CKD Management in the Outpatient Setting/ Transitions of Care

Course Director: Darlene Dobkowski, PA-C, RN, FNKF
Tuesday, April 10, 12:30pm – 6:00pm
Session 622, 5.0 credits/contact hours

Target Audience: Designed for advanced practitioners, nurses, and dialysis technicians.

Course Description: This course is designed to offer the attendee clinical pearls in an interactive environment for updated, evidenced-based management of the CKD patient through the stages of CKD. The attendee will receive an overview on the various types of dialysis outcomes and new advances. Plant-based low protein diets for the CKD patient will be explored, as well as the latest recommendations for goals dealing with blood pressure and hypertension management. Evidence-based recommendations on medications, BMI, and the transplant waiting list will be discussed. Attendees will benefit from an interactive program that involves case-based learning from expert faculty.

Transplant Update: 2018

Course Director: Deirdre Sawinski, MD, FAST
7:30am – 5:15pm
Session 220, 7.75 credits/contact hours
See page 9 for details.

Successful Dialysis: Who, What, Where, When and How

Course Directors: Jennifer Flythe, MD, MPH, and
Jeffrey Perl, MD, SM, FRCPC
7:30am – 5:00pm
Session 221, 8.5 credits/contact hours
See page 9 for details.

Basics of Vascular Access: The Practical Essentials

Course Directors: Kenneth Abreo, MD, and Anil Agarwal,
MD, FACP, FASN, FNKF
7:30am – 12:30pm
Session 223, 4.75 credits/contact hours
See page 9 for details.

Glomerular Diseases: Updates on Pathogenesis and Treatment

Course Director: Gerald Appel, MD, FNKF, Fernando
Fervenza, MD, PhD, FNKF, and Jonathan Hogan, MD
8:00am – 6:00pm
Session 225, 9.25 credits/contact hours
See page 10 for details.

Lunch Workshops

REQUIRED: Separate registration fee of \$50; includes a box lunch and CME credits. Participation is limited to 75 each, so register early.

Wednesday, April 11, 12:00pm – 2:00pm

A Stitch in Time Saves Nine: Preventing, Detecting and Treating Access Dysfunction, Session 230

Chair: Gerald Beathard, MD, PhD

Presenter(s): Anil Agarwal, MD, FACP, FASN, FNKF, FASDIN
Bharat Sachdeva, MD, Gerald Beathard, MD, PhD, and
Charmaine Lok, MD, FNKF

Workshop Description: The common clinical problems associated with hemodialysis vascular access will be discussed during this lunch workshop. Ipsilateral arm swelling after placement of a permanent vascular access is of concern to patients and needs prompt management. TDC-associated infections lead to serious morbidity and mortality and needs immediate treatment. Placement of secondary AVFs, early-stick and HeRO grafts, and percutaneously created AVFs will decrease dependence on TDCs.

Glomerular Disease in 2018 – Where Are We Now, and Where Are We Going?

Session 231

Chairs: Jonathan Hogan, MD, and Rupali Avasare, MD

Presenter(s): Andrew Bomback, MD, MPH, Laurence Beck,
Jr., MD, PhD, FNKF, and Jonathan Hogan, MD

Workshop Description: This interactive lunch workshop will use case-based learning to highlight three important and complex glomerular diseases: membranous nephropathy, ANCA associated vasculitis and paraprotein-associated kidney disease. The presenters are experts who will review how recent advances have changed the paradigm of approaching these diseases, and how future research could revolutionize the way they are managed. Participants will gain an understanding of the use of biomarkers and novel, targeted therapies in these disorders.

Obstetric Nephrology: A Case Based Approach Session 232

Chair: Mala Sachdeva, MD

Presenter(s): Vesna Garovic, MD, Mala Sachdeva, MD, Paige M. Porrett, MD, PhD, and Mandy Trolinger, MS, RD, PA-C, FNKF

Workshop Description: This workshop will update the clinician on various venues where pregnant patients interact with the nephrologists. Topics will range from chronic kidney disease care to treating pregnant patients on dialysis and transplant. A case based approach with state-of-the-art speakers will allow for an informative discussion on hypertension, kidney disease, and nutritional aspects of the pregnant patient that has kidney disease.

Critical Care Medicine for the Nephrologist, Session 233

Chairs: Ronald Wald, MD, MPH, and Paul M. Palevsky, MD, FNKF

Presenter(s): Dan Negoianu, MD, Kathleen Liu, MD, and Sean Bagshaw, MD, MSc, FRCPC

Workshop Description: Nephrologists and advanced practitioners are frequent consultants in the ICU. This interactive workshop will provide participants with an update on the key developments in critical care medicine that are of relevance to practicing nephrologists. This will include a review of the major contributions to the critical care literature over the past year, in addition to focused discussions on the management of sepsis and intra-abdominal hypertension/abdominal compartment syndrome in critically ill patients.

Friday, April 13, 12:00pm – 1:30pm

Teach Each Other Well: Improving Communication Between Providers and Patients/Family Members Session 235

Chairs: Vanessa Grubbs, MD, and Jennifer Scherer, MD

Presenter(s): Robert Cohen, MD, and Jane Schell, MD

Workshop Description: This interactive workshop will teach communication tools for challenging conversations between nephrology providers and patients and family members regarding end-stage kidney disease decisions. Cases will be discussed to highlight skills that can be used for these difficult discussions.

Acid-base and Electrolyte Cases Session 236

Chairs: Kalani Raphael, MD, MS, FNKF, and Delphine Tout, MDCM, MAS, FNKF

Presenter(s): Mike Emmett, MD, and Alan Yu, MD, MB, BChir

Workshop Description: During this workshop, a variety of common and uncommon acid-base and electrolyte cases will be presented by experts in the field. Using an interactive approach, participants will be challenged to determine next steps as each case progresses, identify the diagnosis, and select the most appropriate treatment plan.

Improving Nephrology Education Session 237

Chair: Laura Maursetter, DO

Presenters: Ali Poyan Mehr, MD, Laura Maursetter, DO, and Swapnil Hiremath, MD, MPH

Workshop Description: This session will enhance and enlighten the attendee on novel online and classroom methods to improve nephrology education at student, resident, fellow and continuing medical education level. Practical teaching strategies will be discussed that will improve your skill set to take back to your academic institutions.

Catching the Beat, Understanding Common Arrhythmias and the Treatment Session 630

Chair: Laurie Benton, PhD, MPAS, PA-C, RN, FNKF

Presenter(s): Justin Prince DHSc, PA-C, and Kristine Haugh, DNP, AGACNP-BC

Workshop Description: Ventricular and supraventricular arrhythmias are very common in ESRD patients, much more so than the general population. In fact, those with ESRD are at high risk for bradycardia and sudden death. In this workshop, we will explore the most common dysrhythmias encountered in the renal patient. We will explore techniques for confidently identifying these occurrences in and inpatient setting with interactive scenarios. Lastly, we will review the current recommendations for when to treat, how to treat and when to observe.

Advanced Practitioner Program

Tuesday, April 10

TIME	SESSION #	SESSION	NOTES
7:30am – 5:30pm	620	Critical Care Nephrology	●
7:30am – 12:00pm	621	NP Exam Review	●
7:30am – 12:30pm	223	Basics of Vascular Access: The Practical Essentials	
7:30am – 5:15pm	220	Transplant Update: 2018	●
7:30am – 5:00pm	221	Successful Dialysis: Who, What, Where, When and How	●
8:00am – 6:00pm	225	Glomerular Diseases: Updates on Pathogenesis and Treatment	●
12:30pm – 6:00pm	622	CKD Management in the Outpatient Setting/Transitions of Care	●
6:30pm – 7:30pm	101	Healthcare Professionals Welcome Reception	

Wednesday, April 11

TIME	SESSION #	SESSION	NOTES
8:00am – 9:30am	660	The Air We Breathe: Addressing Pulmonary Problems in Adults with CKD	
8:00am – 9:30am	661	Understanding Labs that Support Clinical Decision Making	
9:30am – 10:00am		Break	
10:00am – 11:30am	662	Heart of the Matter: Cardiorenal and Hypertension	
10:00am – 11:30am	263	Hot Topics in Acute Kidney Injury	
11:30am – 12:00pm		Break	
12:00pm – 2:00pm	230	Workshop: A Stitch in Time Saves Nine: Preventing, Detecting, and Treating Access Dysfunction	●
12:00pm – 2:00pm	231	Workshop: Glomerular Disease in 2018 – Where Are We Now, and Where Are We Going?	●
12:00pm – 2:00pm	232	Workshop: Obstetric Nephrology: A Case-Based Approach	●
12:00pm – 2:00pm	233	Workshop: Critical Care Medicine for the Nephrologist	●
2:00pm – 2:15pm		Break	
2:15pm – 4:00pm	266	Keynote Address: Working Together to Deliver High-Value Care and Shaul G. Massry Distinguished Lecture	
4:00pm – 4:15pm		Break	
4:15pm – 5:45pm	267	KDOQI 20th Anniversary – Guidelines/Updates	
4:15pm – 5:45pm	269	Dispelling the Myths of PD	
6:00pm – 7:30pm		Opening Ceremonies and Reception in the Exhibit Hall – Visit Posters/Exhibits	

Thursday, April 12

TIME	SESSION #	SESSION	NOTES
7:00am – 8:30am		Continental Breakfast in the Exhibit Hall – Visit Posters/Exhibits	
8:30am – 10:00am	663	It's All About that Base: Understanding Acid/Base	
8:30am – 10:00am	271	The Living Donor: Ethics, Risks, and Overcoming Barriers	
10:00am – 10:30am		Break	
10:30am – 12:00pm	664	Kidneys Inside and Out	
10:30am – 12:00pm	665	Diabetes and Beyond	
12:00pm – 2:00pm	666	Council of Advanced Practitioners Networking Luncheon – All Are Welcome	
2:00pm – 3:30pm	667	New Concepts in Managing Metabolic Bone Disease	
2:00pm – 3:30pm	668	Remembering the -oscopies: Incorporating Primary Care into Your Nephrology Practice	
3:30pm – 4:00pm		Break	
4:00pm – 5:30pm	669	Superbugs and Drugs in CKD	
4:00pm – 5:30pm	280	How Can We Deliver Palliative Care to Our Patients: A Practical Team Approach	
5:30pm – 7:00pm		Networking Reception in the Exhibit Hall – Visit Posters/Exhibits	

Friday, April 13

TIME	SESSION #	SESSION	NOTES
7:00am – 10:00am		Break in the Exhibit Hall (Breakfast Served 7:00am – 8:30am) – Visit Posters/Exhibits	
8:45am – 9:45am	281	Quality and Safety in Dialysis: Emphasis on Achieving Zero Preventable Infections	
9:45am – 10:00am		Break	
10:00am – 11:30am	670	Flow in the Know: Anemia and Diuretic Therapy Management	
10:00am – 11:30am	671	Geriatric Syndromes	
11:30am – 12:00pm		Break	
12:00pm – 1:30pm	630	Catching the Beat: Understanding Common Arrhythmias and the Treatment	•
12:00pm – 1:30pm	235	Workshop: Teach Each Other Well: Improving Communication Between Providers and Patients/Family Members	•
12:00pm – 1:30pm	236	Workshop: Acid-base and Electrolyte Cases	•
12:00pm – 1:30pm	237	Workshop: Improving Nephrology Education	•
1:30pm – 2:00pm		Break	
2:00pm – 3:30pm	672	Frailty in the Renal Transplantation: A Modifiable Risk Factor for Mortality?	
3:30pm – 4:00pm		Break	
4:00pm – 5:30pm	673	GI Challenges in Nephrology	
4:00pm – 5:30pm	674	Beyond Metabolic Bone Disorders	

Saturday, April 14

TIME	SESSION #	SESSION	NOTES
6:00am – 7:30am		Team Kidney 5K Fun Run	•
8:30am – 10:00am	675	CKD Dermatology and CAM 101	
8:30am – 10:00am	676	Adequacy and Insight	
10:00am – 10:30am		Break	
10:30am – 12:00pm	677	Updates in Money Matters and Practice Policy	
12:00pm		Meeting Adjourns	

• Separate Registration and/or Fee Required.

Visit nkfclinicalmeetings.org for additional program details and up-to-date information on SCM18.

Nephrology Nurse and Technician Program

Planning Committee

Marianne Neumann, RN, CNN, FNKF

Program Chair
Marquette General/
Albany Regional Kidney Center
Rensselaer, NY

Catherine Firanek, BSN, MBA, RN, FNKF

Program Co-Chair
Baxter Healthcare
Deerfield, IL

Carolyn Atkins, BS, RN, CCTC, FNKF

Dallas, TX

Teresa Close, RN, FNKF

Fresenius Medical Care North America
Willis, TX

Danilo Concepcion, CBNT, CCHT-A, FNKF

St. Joseph Hospital
Orange, CA

Lisa Hedin, RN, BSN, FNKF

NxStage
Charlotte, NC

Kerri Holloway, BSN, RN, CNN

Fresenius Medical Care
Burleson, TX

Melinda Martin-Lester, RN, CNN, FNKF

Nephrology Management Group
Phoenix, AZ

Goal

To improve patient outcomes by enhancing nephrology nurses' and technicians' knowledge base and skills that will have a direct impact on clinical practice in a variety of settings.

Continuing Education Information



In support of improving patient care, the National Kidney Foundation is jointly accredited by the Accreditation Council for Continuing Medical Education (ACCME), the Accreditation Council for Pharmacy Education (ACPE), and the American Nurses Credentialing Center (ANCC) to provide continuing education for the healthcare team.

Awarded 24.25 contact hours of continuing nursing education.

Note: Acquiring 24.25 contact hours requires continuous participation from Wednesday morning through Saturday morning. Many participants opt for periodic breaks, which make their credit hours somewhat less. Additional credits are provided for courses requiring separate registration.*

*As of October 2017

Pre-Conference Courses

Tuesday, April 10

REQUIRED: Separate registration fee (see below for pricing). Includes light breakfast and/or box lunch, and CE contact hours. Participation is limited, so register early.

Pricing

Half-Day Courses: \$60 NKF Members, \$75 Non-Members

Full-Day Courses: \$200 NKF Members, \$225 Non-Members

Transplant Update: 2018

Course Director: Deirdre Sawinski, MD, FAST

7:30am – 5:15pm

Session 220, 7.75 contact hours

See page 9 for details.

Successful Dialysis: Who, What, Where, When and How

Course Directors: Jennifer Flythe, MD, MPH, and Jeffrey Perl, MD, SM, FRCPC
7:30am – 5:00pm
Session 221, 8.5 contact hours
See page 9 for details.

Basics of Vascular Access: The Practical Essentials

Course Directors: Kenneth Abreo, MD, and Anil Agarwal, MD, FACP, FASN, FNKF
7:30am – 12:30pm
Session 223, 4.75 contact hours
See page 9 for details.

CKD Management in the Outpatient Setting/ Transitions of Care

Course Director: Darlene Dobkowski, PA-C, RN, FNKF
12:30pm – 6:00pm
Session 622, 5.0 contact hours
See page 18 for details.

The Elephant in the Room: Violence in the Dialysis Center

Presenters: Jane Kwatcher, MSW, LCSW, and Mathias Stricher, EdD
1:00pm – 5:15pm
Session 422, 4.0 contact hours
See page 32 for details.

LUNCH WORKSHOPS

REQUIRED: Separate registration fee of \$50; includes box lunch and CME credits. Participation is limited to 75 each, so register early.

Wednesday, April 11, 12:00pm – 2:00pm

A Stitch in Time Saves Nine: Preventing, Detecting and Treating Access Dysfunction Session 230

Chair: Gerald Beathard, MD

Presenter(s): Anil Agarwal, MD, FACP, FASN, FNKF, Bharat Sachdeva, MD, Gerald Beathard, MD, and Charmaine Lok, MD, FNKF

Workshop Description: The common clinical problems associated with hemodialysis vascular access will be discussed during this lunch workshop. Ipsilateral arm swelling after placement of a permanent vascular access is of concern to patients and needs prompt management. TDC-associated infections lead to serious morbidity and mortality and need immediate treatment. Placement of secondary AVFs, early-stick and HeRO grafts, and percutaneously created AVFs will decrease dependence on TDCs.

Friday, April 13, 12:00pm – 1:30pm

Teach Each Other Well: Improving Communication Between Providers and Patients/Family Members Session 235

Chairs: Vanessa Grubbs, MD, and Jennifer Scherer, MD
Presenter(s): Robert Cohen, MD, and Jane Schell, MD, FNKF

Workshop Description: This interactive workshop will teach communication tools for challenging conversations between nephrology providers and patients and family members regarding end-stage kidney disease decisions. Cases will be discussed to highlight skills that can be used for these difficult discussions.

Nephrology Nurse and Technician Program

Tuesday, April 10

TIME	SESSION #	SESSION	NOTES
7:30am – 5:15pm	220	Transplant Update: 2018	•
7:30am – 5:00pm	221	Successful Dialysis: Who, What, Where, When, and How	•
7:30am – 12:30pm	223	Basics of Vascular Access: The Practical Essentials	•
12:30pm – 6:00pm	622	CKD Management in the Outpatient Setting/Transitions of Care	
1:00pm – 5:15pm	422	The Elephant in the Room: Violence in the Dialysis Center	•
6:30pm – 7:30pm	101	Healthcare Professionals Welcome Reception	

Wednesday, April 11

TIME	SESSION #	SESSION	NOTES
8:00am – 9:30am	360	Infection Control Practices	
8:00am – 9:30am	260	Debate: Do Not Set Sail Without a Compass: Planning the Best Access at the Right Time	
9:30am – 10:00am		Break	
10:00am – 11:30am	361	How to Protect Your Patients from Technological Harm	
10:00am – 11:30am	263	Hot Topics in Acute Kidney Injury	
11:30am – 12:00pm		Break	
12:00pm – 2:00pm	230	Workshop: A Stitch in Time Saves Nine: Preventing, Detecting, and Treating Access Dysfunction	•
2:00pm – 2:15pm		Break	
2:15pm – 4:00pm	266	Keynote Address: Working Together to Deliver High-Value Care and Shaul G. Massry Distinguished Lecture	
4:00pm – 4:15pm		Break	
4:15pm – 5:45pm	267	KDOQI 20th Anniversary – Guidelines/Updates	
4:15pm – 5:45pm	268	Expanding Access to Transplant: New Perils, New Opportunities	
4:15pm – 5:45pm	269	Dispelling the Myths of PD	
6:00pm – 7:30pm		Opening Ceremonies and Reception in the Exhibit Hall – Visit Posters/Exhibits	

Thursday, April 12

TIME	SESSION #	SESSION	NOTES
7:00am – 8:30am		Continental Breakfast in the Exhibit Hall – Visit Posters/Exhibits	
8:30am – 10:00am	362	CKD in the Adolescent Patient	
10:00am – 10:30am		Break	
10:30am – 12:00pm	363	Preventing Bloodstream Infection in the Hemodialysis Patient	
10:30am – 12:00pm	274	Home Hemodialysis: Focus on the Patient	
12:00pm – 2:00pm	364	Council of Nephrology Nurses and Technicians Luncheon: We Are a Team: A Physician's Perspective	
2:00pm – 3:30pm	365	Connected Health in Home Dialysis	
2:00pm – 3:30pm	366	Understanding Cardiac Function	
3:30pm – 4:00pm		Break	
4:00pm – 5:30pm	471	Grievances: Creating a Safe Environment for Patients to Speak Up	
4:00pm – 5:30pm	279	Please Pass the Salt – or Not? Debate on Sodium Intake	
4:00pm – 5:30pm	280	How Can We Deliver Palliative Care to Our Patients: A Practical Team Approach	
5:30pm – 7:00pm		Networking Reception in the Exhibit Hall – Visit Posters/Exhibits	

Friday, April 13

TIME	SESSION #	SESSION	NOTES
7:00am – 10:00am		Break in the Exhibit Hall (Breakfast Served 7:00am – 8:30am) – Visit Posters/Exhibits	
8:45am – 9:45am	281	Quality and Safety in Dialysis: Emphasis on Achieving Zero Preventable Infections	
9:45am – 10:00am		Break	
10:00am – 11:30am	367	Managing Diversity in Healthcare	
10:00am – 11:30am	473	Exploring No Dialysis: A Valid Choice	
11:30am – 12:00pm		Break	
12:00pm – 1:00pm	368	Nursing Informatics	
12:00pm – 1:00pm	369	Certification: What's in it for You!	
12:00pm – 1:30pm	235	Workshop: Teach Each Other Well: Improving Communication Between Providers and Patients/Family Members	•
1:30pm – 2:00pm		Break	
2:00pm – 3:30pm	371	Removing the HIPAA Handcuffs: Debunking the Myths While Being Compliant	
2:00pm – 3:30pm	572	Water, Water Everywhere – How Much Should I Drink?	
2:00pm – 3:30pm	672	Frailty in the Renal Transplantation: A Modifiable Risk Factor for Mortality?	
3:30pm – 4:00pm		Break	
4:00pm – 5:30pm	370	The Way Forward: Expanding Living Donation	
4:00pm – 5:30pm	560	Food First: Food Before Meds in CKD Treatment	
4:00pm – 5:30pm	286	Hypertension Treatment in the 21st Century	
4:00pm – 5:30pm	287	Peritoneal Dialysis First	

Saturday, April 14

TIME	SESSION #	SESSION	NOTES
6:00am – 7:30am		Team Kidney 5K Fun Run	•
8:30am – 10:00am	372	How to Win Over Your Patients and Peers in a Professional Manner	
8:30am – 10:00am	288	The Smooth Road Home: Fix Operational Potholes	
10:00am – 10:30am		Break	
10:30am – 12:00pm	576	Power to the Patients: Advocacy & Empowerment	
10:30am – 12:00pm	290	Hospital U-Turns: Readmissions in Dialysis Patients	
12:00pm		Meeting Adjourns	

- Separate Registration and/or Fee Required.

Visit nkfclinicalmeetings.org for additional program details and up-to-date information on SCM18.



National Association of Nephrology Technicians/Technologists Program



Planning Committee

Kevin Burns, Sr., CHT, CHBT
Fresenius Medical Care North America
Houston, TX

Emily Michalak, BS
Satellite Healthcare, San Jose, CA

Heather Paradis, CHT
Fresenius Medical Care, Boise, ID

NKF is pleased to welcome NANT to SCM18! Technicians will now be offered additional programming coordinated by NANT's Planning Committee, which includes a two-day program for clinical and biomedical technicians.

Please see the NKF-CNNT program (pages 22 – 25) for additional program offerings for April 10 – 14.

Thursday, April 12

TIME	CLINICAL TRACK	BIOMEDICAL TRACK
7:00am – 8:30am	Continental Breakfast in the Exhibit Hall – Visit Posters/Exhibits	
8:30am – 10:00am	Sexuality in Dialysis Patients	Water Treatment
10:00am – 10:30am	Break	
10:30am – 12:00pm	Communicating Effectively with Nurses and Physicians	Disaster Preparedness: What the Biomedical Technician Needs to Know
12:00pm – 2:00pm	NKF Council of Nephrology Nurses and Technicians (CNNT) Networking Luncheon – All Are Welcome!	
2:00pm – 3:30pm	Wipe Out Catheters	What Would We Do Without You? The Importance of the Biomedical Team
3:30pm – 4:00pm	Break	
4:00pm – 5:30pm	There Are No Short Cuts to Dialysis Outcomes	
5:30pm – 7:00pm	Networking Reception in the Exhibit Hall – Visit Posters/Exhibits	

Friday, April 13

TIME	CLINICAL TRACK	BIOMEDICAL TRACK
7:00am – 10:00am	Break in the Exhibit Hall (Breakfast Served 7:00am – 8:30am) – Visit Posters/Exhibits	
8:45am – 9:45am	Quality and Safety in Dialysis: Emphasis on Achieving Zero Preventable Infections	
9:45am – 10:00am	Break	
10:00am – 11:30am	Survey Readiness	Occupational Safety and Health Administration (OSHA)
11:30am – 12:00pm	Break	
12:00pm – 1:00pm	Disaster Preparedness: What Clinical Technicians Need to Know	Technical Home Assessments
1:30pm – 2:00pm	Break	
2:00pm – 3:30pm	Fluid Management	Chemistry for Biomed
3:30pm – 4:00pm	Break	
4:00pm – 5:30pm	Life Inside A Single Hollow Fiber	

Registration: NANT and/or NKF members receive discounted registration to attend. Registration includes access to both the NANT program, as well as the NKF 2018 Spring Clinical Meetings. Technicians may attend **any** session on any program track. See page 38 for pricing information.

Hotel: Please visit nkfclinicalmeetings.org for additional information regarding a separate room block available at a discounted room rate for NANT program attendees.

Renal and Clinical Dietitian Program

Planning Committee

Beth Shanaman, RD, FNKF

Program Chair
Northwest Kidney Centers
Seattle, WA

Beth Morlang, RD, LD, FNKF

Program Co-Chair
Bright Dialysis
Ft. Pierce, FL

Christine Barrett, MS, RD, LD, FNKF

DaVita Leavenworth
Leavenworth, KS

Nadiya Lakhani, RDN, CSR, LD, FNKF

Dallas Nephrology Associates
Dallas, TX

Meredith Marinaro, MS, RD, CSR, FNKF

Keryx Biopharmaceuticals
Farmington, CT

Erika Spann, RD

U.S. Renal Care Dialysis
Inglewood, CA

Mary Sundell, MLAS, RD, LDN, CCRP, FNKF

Vanderbilt Dialysis Clinic
Nashville, TN

Angela Weinstock RD, LD, FNKF

DaVita Green Valley Dialysis
Henderson, NV

Continuing Education Information



The National Kidney Foundation is a Continuing Professional Education (CPE) Accredited Provider with the Commission on Dietetic Registration (CDR). CDR Credentialed Practitioners will receive 24.25* Continuing Professional Education Units (CPEUs) for completion of this activity/material.

Note: Acquiring 24.25 CPEUs requires continuous participation from Wednesday morning through Saturday morning. Many participants opt for periodic breaks, which make their CPEUs somewhat less. Additional CPEUs are provided for courses requiring separate registration.*

*As of October 2017

Pre-Conference Courses

Tuesday, April 10

REQUIRED: Separate registration fee of \$150 for NKF Members, \$175 for Non-Members; includes light breakfast, box lunch, and CPEUs. Participation is limited, so register early.

Foundations of Nutrition Practice for Kidney Disease (Strategies I)

Course Director: Janelle Gonyea, RDN, LD, FNKF

7:30am – 5:00pm

Session 520, 7.75 CPEUs

Target Audience: Strategies I is designed for registered dietitians and other healthcare providers, such as nurse practitioners and physician assistants, who wish to strengthen their overall knowledge of the complex nutritional requirements of people with chronic kidney disease (CKD), and Stage 5 in particular.

Course Description: Strategies I will focus on learning the basics of renal nutrition. Sessions will include a review of renal physiology and changes that occur as CKD progresses, management of mineral bone disease and

malnutrition, Medical Nutrition Therapy (MNT) for in-center hemodialysis, home hemodialysis and peritoneal dialysis patients, an overview of vitamin requirements, and a pharmacology update by nationally-recognized leaders. This all-day workshop will conclude with a case-study review to help apply practical solutions to common issues facing professionals who treat people with kidney disease.

Advanced Practice in Renal Nutrition: Update 2018 (Strategies II)

Course Director: Victor Yu, PhD, RD, BC-ADM

7:30am – 5:00pm

Session 521, 7.25 CPEUs

Target Audience: Designed for advanced practice renal dietitians.

Course Description: This course is designed to offer the attendee in-depth presentations of controversial issues facing nutrition professionals. Topics to be discussed are: nutrition care challenges for patients with diabetes, hypercalcemia, the risks and benefits of eating while on dialysis, hypoalbuminemia, and more!



@NKFClinicals #NKFClinicals

PRELIMINARY PROGRAM 27

Workshops

Thursday, April 12, 4:00pm – 5:30pm

REQUIRED: Separate registration required. This workshop is complimentary, but participation is limited, so register early.

Nutritional Poster Tour, Session 530

Presenter(s): Mary Sundell, MLAS, RD, LDN, CCRP, FNKF, Gerald VanBolt, BA, and Aimee Jaremowicz, RD, LDN, FNKF

Workshop Description: Do you love the poster sessions, but you're not sure what to look for in research and outcomes? Tour the posters in this research session with a colleague who has a background in both renal nutrition and research to better understand what is new, what is accurate, and what needs further study.

Friday, April 13, 12:00pm – 1:30pm

REQUIRED: Separate registration fee of \$50; includes box lunch and CPEUs. Participation is limited to 75 each, so register early.

Renal Emergencies in the Cancer Patient: A Case-Based Session Session 234

Chairs: Mark Perazella, MD, FNKF

Presenter(s): Mitch Rosner, MD, Rimda Wanchoo, MD, and Mark Perazella, MD

Workshop Description: This workshop will update clinicians on three acute emergencies that face the physician in a cancer patient: tumor lysis syndrome, hypercalcemia and various forms of acute kidney injury. The session will be case based with interactive features and world renowned speakers.

Teach Each Other Well: Improving Communication Between Providers and Patients/Family Members Session 235

Chairs: Vanessa Grubbs, MD, and Jennifer Scherer, MD

Presenter(s): Robert Cohen, MD, and Jane Schell, MD, FNKF

Workshop Description: This interactive workshop will teach communication tools for challenging conversations between nephrology providers and patients and family members regarding end-stage kidney disease decisions. Cases will be discussed to highlight skills that can be used for these difficult discussions.

Renal and Clinical Dietitian Program

Tuesday, April 10

TIME	SESSION #	SESSION	NOTES
7:30am – 5:00pm	520	Foundations of Nutrition Practice for Kidney Disease (Strategies I)	•
7:30am – 5:00pm	521	Advanced Practice in Renal Nutrition: Update 2018 (Strategies II)	•
6:30pm – 7:30pm	101	Healthcare Professionals Welcome Reception	

Wednesday, April 11

TIME	SESSION #	SESSION	NOTES
8:00am – 9:30am	574	The New KDOQI Nutrition Guidelines: What is New and What Do I Change?	
8:00am – 9:30am	561	Diabetes Self-Management Education: Why Patients Aren't Attending and What Practitioners Can Do About It	

Wednesday, April 11 (Continued)

TIME	SESSION #	SESSION	NOTES
9:30am – 10:00am		Break	
10:00am – 11:30am	562	Renal Cooking with Whole Foods	
10:00am – 11:30am	263	Hot Topics in Acute Kidney Injury	
11:30am – 12:00pm		Break	
12:00pm – 2:00pm	563	Council on Renal Nutrition Networking Luncheon – All Are Welcome!	
2:00pm – 2:15pm		Break	
2:15pm – 4:00pm	266	Keynote Address: Working Together to Deliver High-Value Care and Shaul G. Massry Distinguished Lecture	
4:00pm – 4:15pm		Break	
4:15pm – 5:45pm	564	Joel D. Kopple Award Presentation	
4:15pm – 5:45pm	269	Dispelling the Myths of PD	
6:00pm – 7:30pm		Opening Ceremonies and Reception in the Exhibit Hall – Visit Posters/Exhibits	

Thursday, April 12

TIME	SESSION #	SESSION	NOTES
7:00am – 8:30am		Continental Breakfast in the Exhibit Hall – Visit Posters/Exhibits	
8:30am – 10:00am	565	Hold Up, Wait a Minute – Gastroparesis: An Overview	
8:30am – 10:00am	566	Hyperphosphatemia: Don't Blame the Patient	
10:00am – 10:30am		Break	
10:30am – 12:00pm	567	Professional Development for the RD: What Does the Future of Our Profession Look Like?	
10:30am – 12:00pm	665	Diabetes and Beyond	
12:00pm – 2:00pm		Break in the Exhibit Hall – Lunch Served 12:00pm – 1:30pm	
2:00pm – 3:30pm	568	Taking Your CKD Private Practice from Stuck to Soaring	
2:00pm – 3:30pm	569	Mineral Bone Disease Update for KDIGO	
2:00pm – 3:30pm	470	Changing Patient Health Behaviors Through Understanding Habit Change	
3:30pm – 4:00pm		Break	
4:00pm – 5:30pm	530	Nutritional Poster Tour	
4:00pm – 5:30pm	279	Please Pass the Salt – or Not? Debate on Sodium Intake	
4:00pm – 5:30pm	280	How Can We Deliver Palliative Care to Our Patients: A Practical Team Approach	
4:00pm – 5:30pm	471	Grievances: Creating a Safe Environment for Patients to Speak Up	
5:30pm – 7:00pm		Networking Reception in the Exhibit Hall – Visit Posters/Exhibits	

Friday, April 13

TIME	SESSION #	SESSION	NOTES
7:00am – 10:00am		Break in the Exhibit Hall (Breakfast Served 7:00am – 8:30am) – Visit Posters/Exhibits	
8:45am – 9:45am	281	Quality and Safety in Dialysis: Emphasis on Achieving Zero Preventable Infections	
9:45am – 10:00am		Break	
10:00am – 11:30am	570	On the Brink: Overview of Current Research for CKD/ESRD Dietary Recommendations	
10:00am – 11:30am	282	KDOQI Commentary on the KDIGO CKD MBD Guidelines	
11:30am – 12:00pm		Break	
12:00pm – 1:00pm	571	Kidney Stones: What Does the Practitioner Need to Know?	
12:00pm – 1:30pm	234	Workshop: Renal Emergencies in the Cancer Patient: A Case-Based Session	●



Friday, April 13 (Continued)

TIME	SESSION #	SESSION	NOTES
12:00pm – 1:30pm	235	Workshop: Teach Each Other Well: Improving Communication Between Providers and Patients/Family Members	•
1:30pm – 2:00pm		Break	
2:00pm – 3:30pm	572	Water, Water Everywhere – How Much Should I Drink?	
2:00pm – 3:30pm	672	Frailty in the Renal Transplantation: A Modifiable Risk Factor for Mortality?	
2:00pm – 3:30pm	476	Pediatrics 101 for the Social Worker and Registered Dietitian	
3:30pm – 4:00pm		Break	
4:00pm – 5:30pm	573	True Guts: Gut Microbiome and What it Means to the Kidney	
4:00pm – 5:30pm	560	Food First: Food Before Meds in CKD Treatment	

Saturday, April 14

TIME	SESSION #	SESSION	NOTES
6:00am – 7:30am		Team Kidney 5K Fun Run	•
8:30am – 10:00am	575	Don't Let the Turkeys Get You Down: Dealing with Difficult Personalities in the Dialysis Unit	
10:00am – 10:30am		Break	
10:30am – 12:00pm	576	Power to the Patients: Advocacy & Empowerment	
12:00pm		Meeting Adjourns	

- Separate Registration and/or Fee Required

Visit nkfclinicalmeetings.org for additional program details and up-to-date information on SCM18.

Nephrology Social Worker Program

Planning Committee

Jennifer McClain, MSW, LSW, NSW-C, FNKF

Program Chair

Fresenius Medical Care – Fire Mesa Dialysis
Las Vegas, NV

Kevin Ceckowski, MSW, LMSW, FNKF

Program Co-Chair

Walter Reed National Military Medical Center
Bethesda, MD

Jeff Harder, MSW, LICSW

University of Washington Medical Center
Seattle, WA

Katherine Merritt, LCSW, FNKF

Satellite Healthcare
San Jose, CA

Dorothy Muench, MSW, LCSW, NSW-C, FNKF

Continuing Education Chair

Wake Forest
Winston Salem, NC

Jessica A. Phipps, MSW, LSW

Fresenius Kidney Care
Plainfield, NJ

Julie Raether, LICSW, FNKF

University of Minnesota Medical Center, Fairview
Minneapolis, MN

Elanderia Rowe, LMSW-IPR, NSW-C

DaVita Renal Center of Carrollton
Carrollton, TX

Jessica M. Zeman APSW, NSW-C, FNKF

Mayo Clinic Health System
Eau Claire, WI

Continuing Education Information

The National Kidney Foundation Council of Nephrology Social Workers, provider #1014, is approved as a provider for social work continuing education by the Association of Social Work Boards (ASWB) www.aswb.org, phone: 1.800.225.6880, through the Approved Continuing Education (ACE) program. The National Kidney Foundation Council of Nephrology Social Workers maintains responsibility for the program.

National Kidney Foundation SW CPE is recognized by the New York State Education Department's State Board for Social Work as an approved provider of continuing education for licensed social workers #0064.

Social Workers will receive 24.25* continuing education clock hours for participating in this activity.

Conference registrants are responsible for making sure their state accepts the ASWB ACE provider as sufficient for CEUs, or if they need to do anything additional to independently receive state CEUs.

Note: Acquiring 24.25 continuing education clock hours requires continuous participation from Wednesday morning through Saturday morning. Many participants opt for periodic breaks, which make their continuing education clock hours somewhat less. Additional continuing education clock hours are provided for courses requiring separate registration.*

**As of October 2017*

Pre-Conference Courses

Tuesday, April 10

REQUIRED: Separate registration fee (see below for pricing). Includes syllabus, light breakfast and/or box lunch, and continuing education clock hours. Participation is limited, so register early.

Pricing

Half-Day Courses: \$60 NKF Members, \$75 Non-Members

Full-Day Courses: \$200 NKF Members, \$225 Non-Members

New Nephrology Social Workers: Tools, Techniques, and Strategies for a Successful and Effective Practice

Course Directors: Vernon Silva, LCSW, NSW-C, and Nina Abiera, ASW, MSW, MPA

8:00am – 12:15pm

Session 420, 4.0 clock hours

Target Audience: Designed for new and seasoned nephrology social workers, who are seeking best practices and organizational methods, as well as candidates for NSW-C Certification.

Course Description: This course was developed to offer attendees an extensive review of specific best practices as they relate to dialysis social work services. The multiple tips and takeaways will: hone participants' clinical skills, enhance

application of techniques for interventions, and broaden their documentation and resource toolbox for the purpose of implementing strategies in a fast-paced, culturally diverse treatment setting. Focus will be on efficient and effective methods for clinical case management (assessment, care planning, followup) that maintain high professional and ethical standards.

Substance Use Disorders & Kidney Disease: Implications for Nephrology Social Work Practice

Course Directors: Melissa Reitmeier, PhD, Aidyn Lachini, PhD, MSW, LSW, and Teri Browne, PhD, MSW, NSW-C
8:00am – 12:15pm

Session 421, 4.0 clock hours

Target Audience: Designed for nephrology social workers.

Course Description: Substance use disorders (SUDs) are a significant psychosocial barrier to CKD outcomes. This four-hour course will provide attendees an overview of SUDs and kidney disease, and train social workers to become proficient in Screening, Brief Intervention and Referral to Treatment (SBIRT). SBIRT is a brief procedure that uses a validated tool to screen individuals for at-risk substance use, and if necessary, provides brief intervention and/or a referral to substance use disorder treatment services. SBIRT has been used effectively in a variety of settings to promote self-awareness regarding the connection between SUD behaviors and their relationship to health outcomes, and to intervene briefly if and when heavy substance use is identified. This workshop will specifically focus on SBIRT as it relates to use in kidney disease populations and help you apply this evidence-based measure in nephrology settings.

The Elephant in the Room: Violence in the Dialysis Center

Course Directors: Jane Kwatcher, MSW, LCSW, and Matt Stricherz, EdD

1:00pm – 5:15pm

Session 422, 4.0 clock hours

Target Audience: Designed for nephrology social workers, nurses and dialysis technicians.

Course Description: Why are we even talking about violence in the dialysis setting? Does violence even really happen in dialysis? YES! We will discuss real events that have transpired over the last few years in dialysis settings and many more events that go unreported. The threat is real and rarely, if ever, addressed. Violent incidents occur at all hours, and all staff should be trained to manage the situations...this is not something just the social worker should address. Violence and perceived threats must be addressed immediately, with the protection of human life being the goal for all involved.

Living and Working with Chronic Kidney Disease: Research, Interventions, and Resources for Employment and Quality of Life

Course Directors: Elizabeth Jones, MSW, LCSW, and Deborah Evans, MSW

Tuesday, April 10, 1:00pm – 5:15pm

Session 423, 4.0 clock hours

Target Audience: Designed for nephrology social workers.

Course Description: Presenters will discuss why it is important as social workers to address this issue with ESRD patients, sharing some of their own research on the relationship between employment and transplant. Participants will discover ways to advocate more effectively for their patients' vocational needs. Case presentations will be discussed in challenging work scenarios. There will also be patients who will present experiences on navigating chronic kidney disease and working.

Workshops

Thursday, April 12, 4:00pm – 5:30pm

REQUIRED: Separate registration required. This workshop is complimentary, but participation is limited, so register early.

Guided Tour of the Exhibit Hall Research Posters Session 430

Presenters: Teri Browne, PhD, MSW, NSW-C, and Joseph Merighi, PhD, MSW, LISW

Workshop Description: An experiential, hand-on tour of abstracts featuring psychosocial content. What makes for a good poster? How do you identify key findings? Veteran instructors will help participants hone skills in assessing and digesting (and building!) posters.

Friday, April 13, 12:00pm – 1:30pm

REQUIRED: Separate registration fee of \$50; includes box lunch and CME credits. Participation is limited to 75 each, so register early.

Teach Each Other Well: Improving Communication Between Providers and Patients/Family Members Session 235

Chairs: Vanessa Grubbs, MD, and Jennifer Scherer, MD
Presenters: Robert Cohen, MD, and Jane Schell, MD, FNKF
Workshop Description: This interactive workshop will teach communication tools for challenging conversations between nephrology providers and patients and family members regarding end-stage kidney disease decisions. Cases will be discussed to highlight skills that can be used for these difficult discussions.

Nephrology Social Worker Program

Tuesday, April 10

TIME	SESSION #	SESSION	NOTES
8:00am – 12:15pm	420	New Nephrology Social Workers: Tools, Techniques, and Strategies for a Successful and Effective Practice	●
8:00am – 12:15pm	421	Substance Use Disorders & Kidney Disease: Implications for Nephrology Social Work Practice	●
1:00pm – 5:15pm	422	The Elephant in the Room: Violence in the Dialysis Center	●
1:00pm – 5:15pm	423	Living and Working with Chronic Kidney Disease: Research, Interventions, and Resources for Employment and Quality of Life	●
6:30pm – 7:30pm	101	Healthcare Professionals Welcome Reception	

Wednesday, April 11

TIME	SESSION #	SESSION	NOTES
8:00am – 9:30am	460	From Bleeding Hearts to Excel Charts: Telling the Social Worker's Story Through Data Analysis	
9:30am – 10:00am		Break	
10:00am – 11:30am	464	Good Patient/Bad Patient – When Dialysis Patients Fail at Transplant	❖
10:00am – 11:30am	462	Suicide Screening and Assessment Tools	
11:30am – 12:00pm		Break	
12:00pm – 2:00pm	463	Council of Nephrology Social Workers Networking Luncheon – All Are Welcome!	
2:00pm – 2:15pm		Break	
2:15pm – 4:00pm	266	Keynote Address: Working Together to Deliver High-Value Care and Shaul G. Massry Distinguished Lecture	
4:00pm – 4:15pm		Break	
4:15pm – 5:45pm	461	A Clinical Social Work End-of-Life Survey: Constructive Work with Patients and Family Members on Advance Directives and MOLST	❖
4:15pm – 5:45pm	465	Strategies to Engage the IDT in KDQOL and Depression Screenings	
4:15pm – 5:45pm	269	Dispelling the Myths of PD	
6:00pm – 7:30pm		Opening Ceremonies and Reception in the Exhibit Hall – Visit Posters/Exhibits	

Thursday, April 12

TIME	SESSION #	SESSION	NOTES
7:00am – 8:30am		Continental Breakfast in the Exhibit Hall – Visit Posters/Exhibits	
8:30am – 10:00am	466	Practice Methods for Latinos: Education, Health Literacy, and Mental Health	
8:30am – 10:00am	271	The Living Donor: Ethics, Risks, and Overcoming Barriers	❖
10:00am – 10:30am		Break	
10:30am – 12:00pm	467	Transplant Readiness	

Thursday, April 12 (Continued)

TIME	SESSION #	SESSION	NOTES
10:30am – 12:00pm	468	Sexuality and the Dialysis Patient	
10:30am – 12:00pm	274	Home Hemodialysis: Focus on the Patient	
12:00pm – 2:00pm		Break in the Exhibit Hall – Lunch Served 12:00pm – 1:30pm	
2:00pm – 3:30pm	469	Weaving Macro, Mezzo, and Micro Practice Together: Ethical Considerations	❖
2:00pm – 3:30pm	470	Changing Patient Health Behaviors Through Understanding Habit Change	
3:30pm – 4:00pm		Break	
4:00pm – 5:30pm	471	Grievances: Creating a Safe Environment for Patients to Speak Up	
4:00pm – 5:30pm	430	Guided Tour of the Exhibit Hall Research Posters	●
4:00pm – 5:30pm	280	How Can We Deliver Palliative Care to Our Patients: A Practical Team Approach	
5:30pm – 7:00pm		Networking Reception in the Exhibit Hall – Visit Posters/Exhibits	

Friday, April 13

TIME	SESSION #	SESSION	NOTES
7:00am – 10:00am		Break in the Exhibit Hall (Breakfast Served 7:00am – 8:30am) – Visit Posters/Exhibits	
8:45am – 9:45am	281	Quality and Safety in Dialysis: Emphasis on Achieving Zero Preventable Infections	
9:45am – 10:00am		Break	
10:00am – 11:30am	472	Influences of Chronic Illness on Patient's Siblings	
10:00am – 11:30am	473	Exploring No Dialysis: A Valid Choice	
11:30am – 12:00pm		Break	
12:00pm – 1:00pm	474	Road to Licensure: Benefit of Licensure to Elevate Practice/Perception	
12:00pm – 1:00pm	475	Patient Engagement	
12:00pm – 1:30pm	235	Workshop: Teach Each Other Well: Improving Communication Between Providers and Patients/Family Members	●
1:30pm – 2:00pm		Break	
2:00pm – 3:30pm	476	Pediatrics 101 for the Social Worker and Registered Dietitian	
2:00pm – 3:30pm	477	Can We Talk? Peer Mentoring Programs	
2:00pm – 3:30pm	672	Frailty in the Renal Transplantation: A Modifiable Risk Factor for Mortality?	
2:00pm – 3:30pm	284	Peripheral Arterial Disease: A Silent Epidemic in CKD	
3:30pm – 4:00pm		Break	
4:00pm – 5:30pm	478	Teen Autonomy and Planning	
4:00pm – 5:30pm	370	The Way Forward: Expanding Living Donation	
4:00pm – 5:30pm	287	Peritoneal Dialysis First	

Saturday, April 14

TIME	SESSION #	SESSION	NOTES
6:00am – 7:30am		Team Kidney 5K Fun Run	●
8:30am – 10:00am	479	Core Survey Survival for Nephrology Social Workers	
8:30am – 10:00am	372	How to Win Over Your Patients and Peers in a Professional Manner	
10:00am – 10:30am		Break	
10:30am – 12:00pm	480	Thriving in the Nephrology Setting: Social Workers Burned Out or Surviving?	
10:30am – 12:00pm	576	Power to the Patients: Advocacy & Empowerment	
12:00pm		Meeting Adjourns	

• Separate Registration and/or Fee Required. ❖ Ethics Session.

Visit nkfclnicalmeetings.org for additional program details and up-to-date information on SCM18.

Transplant Professional Program

Continuing Education Information

As a designated Approved Provider by the American Board for Transplant Certification (ABTC), the National Kidney Foundation, grants up to 24.25* Category 1 Continuing Education Points for Transplant Certification (CEPTCs) for this offering.

*As of October 2017

Pre-Conference Courses

Tuesday, April 10

REQUIRED: Separate registration fee of \$200 for NKF Members, \$225 for Non-Members; includes light breakfast, box lunch, and Continuing Education Points. Participation is limited, so register early.

Transplant Update: 2018

Course Director: Deirdre Sawinski, MD, FAST
Tuesday, April 10, 7:30am – 5:15pm
Session 220, 7.75 credits
See page 9 for details.

Lunch Workshops

REQUIRED: Separate registration fee of \$50; includes box lunch and continuing education points. Participation is limited to 75 each, so register early.

Wednesday, April 11, 12:00pm – 2:00pm

Obstetric Nephrology: A Case Based Approach Session 232

Chair: Mala Sachdeva, MD

Presenter(s): Vesna Garovic, MD, Mala Sachdeva, MD, Paige M. Porrett, MD, PhD, and Mandy Trolinger, MS, RD, PA-C, FNKF

Workshop Description: This workshop will update the clinician on various venues where pregnant patients interact with the nephrologists. Topics range from chronic kidney disease care to treating pregnant patients on dialysis and transplant. A case-based approach with state-of-the-art speakers will allow for an informative discussion on hypertension, kidney disease, and nutritional aspects of the pregnant patient who has kidney disease.

Thursday, April 12, 4:00pm – 5:30pm

REQUIRED: Separate registration required. This workshop is complimentary, but participation is limited, so register early.

Guided Tour of the Exhibit Hall Research Posters Session 430

Presenter: Teri Browne, PhD, MSW, NSW-C, and Joseph Merighi, PhD, MSW, LISW

Workshop Description: An experiential, hand-on tour of abstracts featuring psychosocial content. What makes for a good poster? How do you identify key findings? Veteran instructors will help participants hone skills in assessing and digesting (and building!) posters.

Friday, April 13, 12:00pm – 1:30pm

Teach Each Other Well: Improving Communication Between Providers and Patients/Family Members Session 235

Chairs: Vanessa Grubbs, MD, MPH, and Jennifer Scherer, MD

Presenter(s): Robert Cohen, MD, and Jane Schell, MD, FNKF

Workshop Description: This interactive workshop will teach communication tools for challenging conversations between nephrology providers and patients and family members regarding end-stage kidney disease decisions. Cases will be discussed to highlight skills that can be used for these difficult discussions.

Improving Nephrology Education Session 237

Chair: Laura Maursetter, DO

Presenter(s): Ali Poyan Mehr, MD, Laura Maursetter, DO, and Swapnil Hiremath, MD, MPH

Workshop Description: This session will enhance and enlighten the attendee on novel online and classroom methods to improve nephrology education at student, resident, fellow and continuing medical education level. Practical teaching strategies will be discussed that will improve your skill set to take back to your academic institutions.



Transplant Professional Program

Tuesday, April 10

TIME	SESSION #	SESSION	NOTES
7:30am – 5:15pm	220	Transplant Update: 2018	●
6:30pm – 7:30pm	101	Healthcare Professionals Welcome Reception	

Wednesday, April 11

TIME	SESSION #	SESSION	NOTES
8:00am – 9:30am	262	From B Cell to Bedside	
8:00am – 9:30am	460	From Bleeding Hearts to Excel Charts: Telling the Social Worker's Story Through Data Analysis	
9:30am – 10:00am		Break	
10:00am – 11:30am	264	A Case-Based Approach to Managing Immunosuppression in Glomerular Disease	
10:00am – 11:30am	464	Good Patient/Bad Patient – When Dialysis Patients Fail at Transplant	
11:30am – 12:00pm		Break	
12:00pm – 2:00pm	232	Workshop: Obstetric Nephrology: A Case-Based Approach	●
2:00pm – 2:15pm		Break	
2:15pm – 4:00pm	266	Keynote Address: Working Together to Deliver High-Value Care and Shaul G. Massry Distinguished Lecture	
4:00pm – 4:15pm		Break	
4:15pm – 5:45pm	267	KDOQI 20th Anniversary – Guidelines/Updates	
4:15pm – 5:45pm	268	Expanding Access to Transplant: New Perils, New Opportunities	
6:00pm – 7:30pm		Opening Ceremonies and Reception in the Exhibit Hall – Visit Posters/Exhibits	

Thursday, April 12

TIME	SESSION #	SESSION	NOTES
7:00am – 8:30am		Continental Breakfast in the Exhibit Hall – Visit Posters/Exhibits	
8:30am – 10:00am	271	The Living Donor: Ethics, Risks, and Overcoming Barriers	
8:30am – 10:00am	466	Practice Methods for Latinos: Education, Health Literacy, and Mental Health	
10:00am – 10:30am		Break	
10:30am – 12:00pm	467	Transplant Readiness	
10:30am – 12:00pm	273	Patient-Reported Outcomes: A New Era in Research and Clinical Care	
12:00pm – 2:00pm		Break in the Exhibit Hall – Lunch Served 12:00pm – 1:30pm	
2:00pm – 3:30pm	470	Changing Patient Health Behaviors Through Understanding Habit Change	
2:00pm – 3:30pm	668	Remembering the -oscopies: Incorporating Primary Care into Your Nephrology Practice	
2:00pm – 3:30pm	277	Social Determinants at the Bedside	
3:30pm – 4:00pm		Break	
4:00pm – 5:30pm	471	Grievances: Creating a Safe Environment for Patients to Speak Up	
4:00pm – 5:30pm	430	Guided Tour of the Posters	●
5:30pm – 7:00pm		Networking Reception in the Exhibit Hall – Visit Posters/Exhibits	

Friday, April 13

TIME	SESSION #	SESSION	NOTES
7:00am – 10:00am		Break in the Exhibit Hall (Breakfast Served 7:00am – 8:30am) – Visit Posters/Exhibits	
8:45am – 9:45am	281	Quality and Safety in Dialysis: Emphasis on Achieving Zero Preventable Infections	
9:45am – 10:00am		Break	
10:00am – 11:30am	283	New Models of Renal Care: A Panel Discussion	
10:00am – 11:30am	282	KDOQI Commentary on the KDIGO CKD MBD Guidelines	
10:00am – 11:30am	367	Managing Diversity in Healthcare	
11:30am – 12:00pm		Break	
12:00pm – 1:30pm	235	Workshop: Teach Each Other Well: Improving Communication Between Providers and Patients/Family Members	•
12:00pm – 1:30pm	237	Workshop: Improving Nephrology Education	•
12:00pm – 1:00pm	475	Patient Engagement	
1:30pm – 2:00pm		Break	
2:00pm – 3:30pm	672	Frailty in the Renal Transplantation: A Modifiable Risk Factor for Mortality?	
3:30pm – 4:00pm		Break	
4:00pm – 5:30pm	370	The Way Forward: Expanding Living Donation	
4:00pm – 5:30pm	287	Peritoneal Dialysis First	
4:00pm – 5:30pm	673	GI Challenges in Nephrology	

Saturday, April 14

TIME	SESSION #	SESSION	NOTES
6:00am – 7:30am		Team Kidney 5K Fun Run	•
8:30am – 10:00am	575	Don't Let the Turkeys Get You Down: Dealing with Difficult Personalities in the Dialysis Unit	
8:30am – 10:00am	372	How to Win Over Your Patients and Peers in a Professional Manner	
10:00am – 10:30am		Break	
10:30am – 12:00pm	576	Power to the Patients: Advocacy & Empowerment	
10:30am – 12:00pm	480	Thriving in the Nephrology Setting: Social Workers Burned Out or Surviving?	
12:00pm		Meeting Adjourns	

• Separate Registration and/or Fee Required.

Visit nkfclinicalmeetings.org for additional program details and up-to-date information on SCM18.

REGISTRATION INFORMATION

Advanced Registration Deadline: January 26, 2018

Please visit the NKF website at nkfclinicalmeetings.org to register. Please see the website for further details.

NOTE: Registration after January 26, 2018 will result in an additional fee of \$50 (\$100 on site).

General Meeting registration fees include:

- Attendance from Wednesday, April 11 – Saturday, April 14
- All meals/activities in the Exhibit Hall (2 breakfasts, 1 lunch, 2 networking receptions)
- Professional Council Networking Luncheons
- Breakfast, lunch, and dinner corporate-supported symposia (seating is limited and on a first-come, first-served basis)
- CME/CE Credits/contact hours

Pre-Conference Courses (Tuesday, April 10) and Workshops

All pre-conference courses and lunch workshops require a separate registration and fee.

Go to nkfclinicalmeetings.org to obtain additional information and to register.

GENERAL MEETING REGISTRATION FEES

DISCIPLINE	OCTOBER 16, 2017 – JANUARY 26, 2018	JANUARY 27, 2018 – APRIL 8, 2018	ON-SITE
Physicians Pharmacists General Attendees	\$385 NKF Member \$585 Non-Member \$160 Fellows (proof of status required) \$100 Resident (proof of status required)	\$435 NKF Member \$635 Non-Member \$160 Fellows (proof of status required) \$100 Resident (proof of status required)	\$485 NKF Member \$685 Non-Member \$160 Fellows (proof of status required) \$100 Resident (proof of status required)
Physician Assistants Nurse Practitioners Nurses Dietitians Social Workers	\$310 NKF Member \$420 Non-Member \$25 Student (proof of status required)*	\$360 NKF Member \$470 Non-Member \$25 Student (proof of status required)*	\$410 NKF Member \$520 Non-Member \$20 Student (proof of status required)*
Technicians	\$175 NKF or NANT Member \$275 Non-Member \$25 Student (proof of status required)*	\$175 NKF or NANT Member \$275 Non-Member \$25 Student (proof of status required)*	\$175 NKF or NANT Member \$275 Non-Member \$25 Student (proof of status required)*

* Must be a full-time student to receive student pricing.

Cancellation Policy: Refund requests must be made in writing and postmarked before **March 16, 2018** and are subject to a 10% administrative fee. Requests postmarked after **March 16, 2018** will not be accepted.

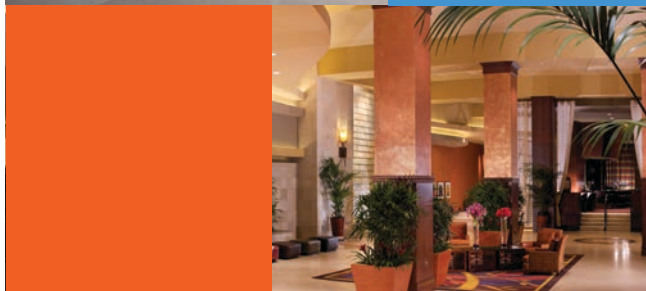


HOTEL ACCOMMODATIONS

**ADVANCE HOUSING DEADLINE:
FEBRUARY 16, 2018**

Rooms are available at co-headquarter hotels the JW Marriott Austin and Hilton Austin, as well as at the Hilton Garden Inn Austin Downtown, Aloft Austin Downtown, Courtyard and Residence Inn Austin Downtown, and Hyatt Place Austin Downtown.

For additional hotel information and to make a reservation please visit the NKF website at: nkfclinicalmeetings.org



Note: Although NKF has reserved room blocks in these hotels, it is possible for the blocks to be sold out. To ensure accommodations at the above hotels, we encourage you to make your hotel arrangements early.



5K FUN RUN!

Join us on **Saturday, April 14th at 6:00am**
for the TK5K Fun Run!

Team Kidney is the challenge program for the National Kidney Foundation, where you can run, jump, ride, swim—anything that makes you sweat—to raise funds to enhance the lives of everyone with or at risk for kidney disease.

The TK5K Fun Run is a family-friendly event and will not be timed. It's perfect for runners of all ages and experience levels. You'll run 3.1 miles along Lady Bird Lake / Colorado running trails.

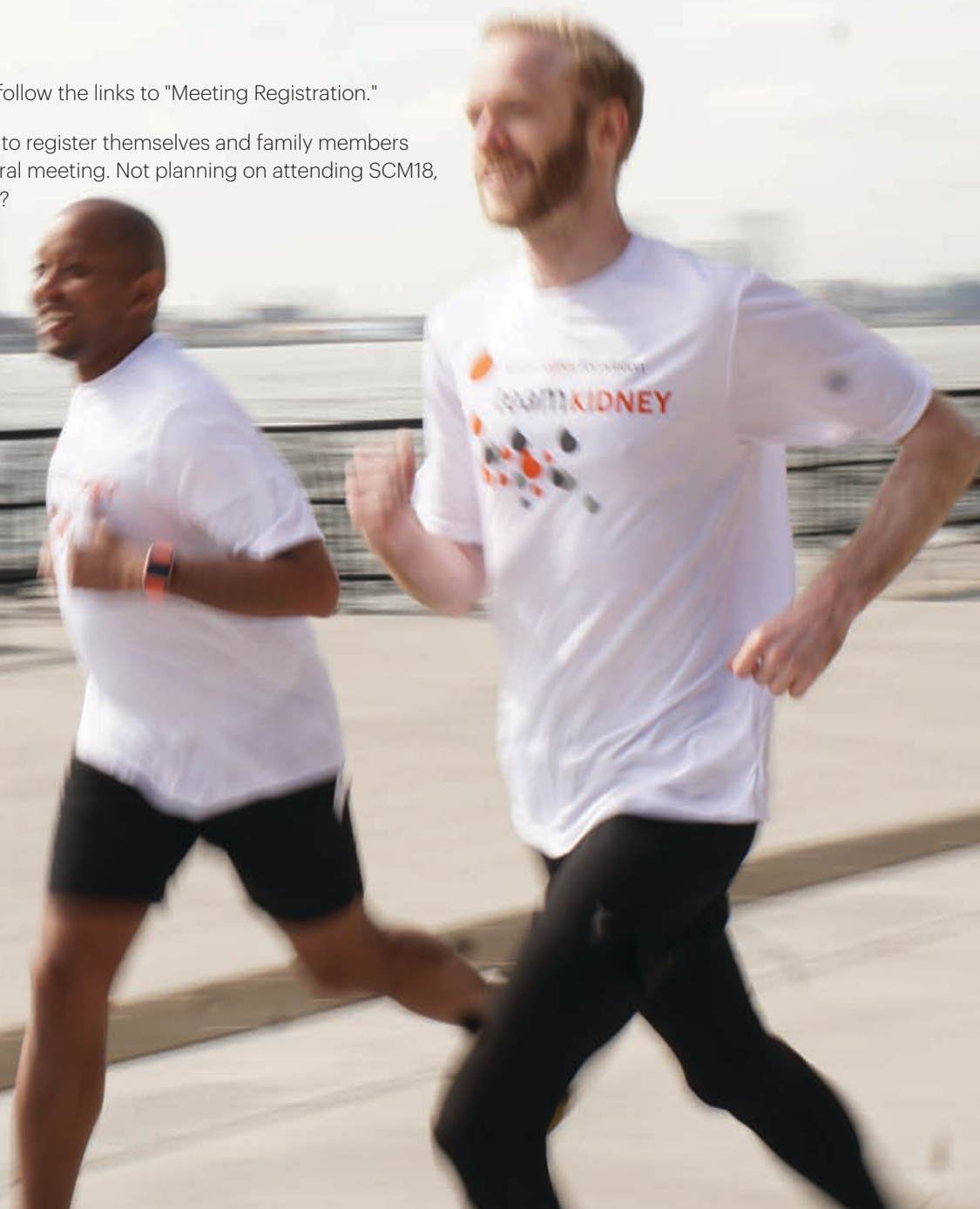
The individual registration fee is \$25 and we encourage family members to run with you, so we're offering a discounted rate of \$10 per person for any non-SCM attendees who register.

To register, visit:

nkfclinicalmeetings.org and follow the links to "Meeting Registration."

Attendees will have the option to register themselves and family members after they register for the general meeting. Not planning on attending SCM18, but want to register for the run?

Complete the registration form online.



Faculty

**As of October, 2017*

Nina Abiera, ASW, MSW, MPA

U.S. Renal Care of West Los Angeles
Los Angeles, CA

Kenneth Abreo, MD, FASDIN

Louisiana State University Medical
Center
Shreveport, LA

**Anil Agarwal, MD, FACP, FASN,
FNKF, FASDIN**

The Ohio State University Wexner
Medical Center
Columbus, OH

Varun Agrawal, MD

University of Vermont College of Medicine
Burlington, VT

Michael Alderman, MD

Albert Einstein College of Medicine
Bronx, NY

**Kim Alleman, MS, APRN, FNP-BC,
CNN-NP**

Harford Hospital
Hartford, CT

Michael Allon, MD

University of Alabama at Birmingham
School of Medicine
Birmingham, AL

Gerald Appel, MD

Columbia University
New York, NY

Lawrence Appel, MD, MPH

Johns Hopkins Medical Institutions
Baltimore, MD

Christopher Arendt, PharmD

Mayo Clinic
Rochester, MN

Rupali Avasare, MD

Oregon Health & Science University
Portland, OR

Vishal Bagchi, MBA, RD, LD

Patient Care America
Pompano Beach, FL

Sean Bagshaw, MD, MSc, FRCPC

University of Alberta
Edmonton, AB, Canada

Joanne Bargman, MD

University Health Network
Toronto, ON, Canada

**Marissa Battistella, BSc Phm,
PharmD, ACPR**

Leslie Dan Faculty of Pharmacy,
University of Toronto
Toronto, ON, Canada

Gerald Beathard, MD, PhD

St. David's Medical Center
Houston, TX

Laurence Beck, Jr., MD, PhD, FNKF

Boston University School of Medicine
Boston, MA

Carlos Bejar, MD

The Kidney and Hypertension Group of
South Florida
Ft. Lauderdale, FL

**Laurie Benton, PhD, MPAS, PA-C, RN,
FNKF**

Baylor Scott & White Health
Temple, TX

Joseph Berger, MD

NYU Langone Health
New York, NY

Jeffrey Berns, MD, FNKF

University of Pennsylvania
Philadelphia, PA

**Kirsten Bibbins-Domingo, PhD,
MD, MAS**

University of California San Francisco
San Francisco, CA

John Bisognano, MD

University of Rochester Medical Center
Rochester, NY

Roy Bloom, MD

University of Pennsylvania
Philadelphia, PA

Carl Boethel, MD

Baylor Scott & White Health
Temple, TX

Andrew Bomback, MD, MPH

Columbia University Medical Center
New York, NY

**Deborah Brooks, MSN, ANP-BC, CNN,
CNN-NP**

Medical University of South Carolina
Charleston, SC

Deborah Brouwer-Maier, RN

Transonic Systems Inc.
Philadelphia, PA

Teri Browne, PhD, MSW, NSW-C

University of South Carolina
Columbia, SC

Jennifer Bruns, LMSW

St. John Hospital
Detroit, MI

Mary Beth Callahan, ACSW/LCSW

Dallas Nephrology Associates/
Dallas Transplant Institute
Dallas, TX

Katie Cardone, PharmD

Albany College of Pharmacy and Health
Sciences
Albany, NY

Kevin Ceckowski, MSW, LMSW, FNKF

Walter Reed National Military Medical
Center
Bethesda, MD

Christopher Chan, MD

University Health Network
Toronto, ON, Canada

Micah Chan, MD

University of Wisconsin School of
Medicine and Public Health
Fitchburg, WI

Mi Chang, MD

Kaiser Permanente South Bay Medical
Center
Harbor City, CA

Tara Chang, MD, MS, FNKF

Stanford University Medical Center
Stanford, CA

Marian Charlton, RN, CCTC

Weill Cornell Medical College
New York, NY

Michael Choi, MD, FNKF

Johns Hopkins University School of
Medicine
Baltimore, MD

Robert Cohen, MD

Beth Israel Deaconess Medical Center
Boston, MA

Kelli Collins, MSW

National Kidney Foundation
New York, NY

Danilo Concepcion, CBNT, CCHT-A, FNKF

St. Joseph Hospital
Orange, CA

Matthew Cooper, MD

Medstar Georgetown Transplant Institute
Washington, DC

Deidra Crews, MD, ScM

John Hopkins University School of
Medicine
Baltimore, MD

Helen Currier, MA, BSN, RN, CENP, CNN

Texas Childrens Hospital
Houston, TX

Robin Dauterive, MD

Baylor Scott & White Health
Temple, TX

Jane Davis, CRNP, DNP, FNKF

University of Alabama at Birmingham
Birmingham, AL

Eli Deal, PharmD

Barnes-Jewish Hospital
St. Louis, MO

Kim Deaver, MSN, RN, CNN, FNKF

University of Virginia Health System
Swoope, VA

Matthew Diamond, DO

Augusta University Health
Augusta, GA

Darlene Dobkowski, PA-C, RN, FNKF

Holy Name Medical Center
Teaneck, NJ

Rachelle DuBose Caruthers, LMSW

ESRD Network Coordinating Council
Los Angeles, CA

Michael Emmett, MD, MACP

Baylor University Medical Center
Dallas, TX

Kimberly English, NP

Baylor Scott & White Health
Temple, TX

Deborah Evans, MA, MSW, LCSW

DaVita Healthcare Partners, Inc
Gainesville, FL

Charles Foulks, MD

Central Texas Veterans Health Care
System
Temple, TX

Daniel Feig, MD

University of Alabama at Birmingham
Birmingham, AL

Harvey Feldman, MD

Nova Southeastern University
Ft. Lauderdale, FL

Otis Felton, MBA

Otis Felton & Associates
Dallas, TX

Fernando Fervenza, MD, PhD, FNKF

Mayo Clinic
Rochester, MN

Jeffrey Fink, MD, MS

University of Maryland Medical Center
Baltimore, MD

Catherine Firanek, BSN, RN, MBA, FNKF

Baxter Healthcare
Deerfield, IL

Jennifer Flythe, MD, MPH

UNC Kidney Center
Chapel Hill, NC

Kimberly Forde-McLean, MD, PhD

Perelman School of Medicine at the
University of Pennsylvania
Philadelphia, PA

Derek Forfang

Kidney Patient Advisory Council
San Pablo, CA

Pranav Garimella, MD, MPH, FASN

UC San Diego Health
San Diego, CA

Vesna Garovic, MD

Mayo Clinic
Rochester, MN

Richard Glassock, MD

Laguna Niguel, CA

Joel Glickman, MD, FNKF

University of Pennsylvania
Philadelphia, PA

David Goldfarb, MD

NYU School of Medicine
New York, NY

Thomas Golper, MD

Vanderbilt University Medical Center
Nashville, TN

Catherine Gomez, BSN, RN, CNN

DaVita West Houston
Houston, TX

Janelle Gonyea, RDN, LD, FNKF

Mayo Clinic Dialysis Services
Rochester, MN

Sherry Green, RN

Texas Health and Human Services
Arlington, TX

Vanessa Grubbs, MD, MPH

University of California, San Francisco
San Francisco, CA

Debra Hain, PhD, APRN, AGPCNP-BC, FAANP, FNKF

Florida Atlantic University and Cleveland
Clinic
Coconut Creek, FL

Emel Hamilton, RN

Fresenius Kidney Care
Waltham, MA

Haewook Han, PhD, RD, CSR, LDN, FNKF

Harvard Vanguard Medical Associates
Boston, MA

Rosa Hand, MS, RDN, LD

Case Western University, School of
Medicine
Cleveland, OH

Jeff Harder, MSW, LICSW, FNKF

University of Washington Medical Center
Seattle, WA

Kristine Haugh, DNP, AGACNP-BC

Baylor Scott & White Health
Temple, TX

Rebecca Hays, APSW, NSW-C

University of Wisconsin Hospital and
Clinics
Madison, WI

Leal Herlitz, MD

Cleveland Clinic
Cleveland, OH

Christina Hernandez, LMSW

Children's Mercy Kansas City
Kansas City, MO

Albert Hicks, MD, MPH

Baylor Scott & White Health
Temple, TX

Joanne Hindlet, ACNP, BC CNN-NP, FNKF

Houston Nephrology Group
Houston, TX

Swapnil Hiremath, MD, MPH

University of Ottawa & Ottawa Hospital
Research Institute
Ottawa, ON, Canada

Lane Hobbs, RD

Northwest Kidney Centers
Seattle, WA

Jonathan Hogan, MD
University of Pennsylvania
Philadelphia, PA

Amy Holt Denome, RN
Fresenius Medical Care
Houston, TX

Katherine Houle, MSN, APRN, C-FNP, CNN-NP, FNKF
Marquette General/Duke Lifepoint
Hospital
Marquette, MI

Andrew Howard, MD, FACP
Metropolitan Nephrology Associates
Clinton, MD

Joanna Hudson, PharmD, BCPS, FASN, FNKF
University of Tennessee
Memphis, TN

Aidyn Iachini, PhD, MSW, LSW
College of Social Work, University of
South Carolina
Columbia, SC

Tamara Isakova, MD
Northwestern University, Feinberg
School of Medicine
Chicago, IL

Bernard Jaar, MD, MPH, FNKF
Johns Hopkins University
Baltimore, MD

Aimee Jaremowicz, RD, LDN, CWCMS, FNKF
Shield HealthCare
Elmhurst, IL

Kenar Jhaveri, MD, FNKF
Hofstra Northwell School of Medicine
Great Neck, NY

Elizabeth Jones, MSW, LCSW, FNKF
DaVita Sterling Dialysis
Sterling, VA

Shelba Jones, PCT
Fresenius Medical Care
Brooklyn, NY

Peter Juergensen, PA-C
Metabolism Associates
Cheshire, CT

Christine Kessler, ANP, CNS, BC-ADM, FAANP
Metabolic Medicine Associates
King George, VA

Judy Kirk, MS, RD, CSR, CDN, FNKF
Rochester Regional Health Dialysis
Center
Rochester, NY

Alan Kliger, MD
Yale University School of Medicine
New Haven, CT

Danny Knight, MD
Dell Medical School
Austin, TX

Lisa Koester, ANP, CNN-NP
Washington University School of
Medicine
St. Louis, MO

Holly Kramer, MD, MPH, FNKF
Loyola University Chicago
Maywood, IL

Jane Kwatcher, MSW, LCSW
DaVita
Claremont, CA

Heather Lawyer, LCSW
St. Louis University Hospital
St. Louis, MO

Krista Lentine, MD, PhD
St. Louis University
St. Louis, MO

Denise Link, MPAS, PA-C, FNKF
The University of Texas Southwestern
Medical Center
Irving, TX

Kathleen Liu, MD
University of California, San Francisco
San Francisco, CA

Jayme Locke, MD
University of Alabama at Birmingham,
School of Medicine
Birmingham, AL

Charmaine Lok, MD, FNKF
University Health Network - Toronto
Hospital
Toronto, ON, Canada

Ray MacMath, MBA
Austin, TX

Kunihiro Matsushita, MD
Johns Hopkins Bloomberg School of
Public Health
Baltimore, MD

Laura Maursetter, DO
University of Wisconsin School of
Medicine and Public Health
Madison, WI

Linda McCann, RD, CSR
Eagle, ID

Suzanne McGuire, RN, BSN, CCTC
UCLA Health
Los Angeles, CA

Beth McQuiston, MD, RD, MS
Abbott
Glenview, IL

Joseph Merighi, PhD, MSW, LISW
University of Minnesota School of Social
Work
St. Paul, MN

Sumit Mohan, MD
Columbia University Department of
Medicine
New York, NY

Eileen Moore, CNSC, RD, LD
Pentec Health
Boothwyn, PA

Christopher Moriates, MD
Dell Medical School
Austin, TX

Alvin Moss, MD
West Virginia University School of
Medicine
Morgantown, WV

Mahasin Mujahid, PhD, MS
UC Berkeley School of Public Health
Berkeley, CA

Mohanram Narayanan, MD
Baylor Scott & White Health
Temple, TX

Dan Negoianu, MD
Perelman School of Medicine at the
University of Pennsylvania
Philadelphia, PA

Marianne Neumann, RN, CNN
Marquette General/Albany Regional
Kidney Center
Rensselaer, NY

Thomas Nickolas, MD
Columbia University Medical Center
New York, NY

Catina O'Leary, PhD, LMSW
Health Literacy Media
St. Louis, MO

Marian O'Rourke, RN, BSN, CCTC
Miami Transplant Institute, Jackson
Memorial Hospital
Miami, FL

Matthew Oliver, MD
University of Toronto, Sunnybrook Health
Sciences Centre
Toronto, ON, Canada

Suzanne Oparil, MD
University of Alabama at Birmingham
Birmingham, AL

Amy Pai, PharmD

University of Michigan College of Pharmacy
Ann Arbor, MI

Paul M. Palevsky, MD, FNKF

University of Pittsburgh School of Medicine
Pittsburgh, PA

Samir Parikh, MD

Ohio State University Wexner Medical Center
Columbus, OH

Mark Perazella, MD, FACP

Yale University School of Medicine
New Haven, CT

Connie Perkins, LCSW

Levine Children's Hospital
Charlotte, NC

Jeffrey Perl, MD, SM, FRCPC

St. Michael's Hospital
Toronto, ON, Canada

Beth Piraino, MD, FNKF

University of Pittsburgh School of Medical
Pittsburgh, PA

Laura Plantinga, PhD

Emory University School of Medicine
Atlanta, GA

Lynn Poole, FNP, CNN, FNKF

ESRD National Coordinating Center
McLean, VA

Paige Porrett, MD, PhD

Perelman School of Medicine at the University of Pennsylvania
Philadelphia, PA

Janie McDaniel, MS, MLS(ASCP),SC

Wake Forest School of Medicine
Winston-Salem, NC

Ali Poyan Mehr, MD

Beth Israel Deaconess Medical Center
Boston, MA

Melissa Prelow, LMSW NSW-C

DaVita Kidney Care - UTSW Dallas East
Dallas, TX

Claire Prince, LCSW

National Foundation for Transplants
Memphis, TN

Justin Prince, DHSc, PA-C

Baylor Scott & White Health
Temple, TX

Anne Pugh, MSW, LCSW

ESRD Network 17
Burlingame, CA

Jai Radhakrishnan, MD

Columbia University
New York, NY

Dominic Raj, MD, DM, DNB, FASN, FACP

George Washington University
Washington, DC

Kalani Raphael, MD, MS, FNKF

University of Utah
Salt Lake City, UT

Melissa Reitmeier, PhD, MSW, LMSW

University of South Carolina
Columbia, SC

Michelle Richardson, PharmD

Tufts Medical Center
Boston, MA

Matthew Rivara, MD

University of Washington
Seattle, WA

Kristi Robinson, LCSW

DaVita
Austin, TX

Sylvia Rosas, MD, MSCE

Joslin Diabetes Center
Boston, MA

Savannah Rose, LMSW

Children's Health
Dallas, TX

Mitch Rosner, MD

University of Virginia Health System
Charlottesville, VA

Daniel Ross, MD

Northwell Health
Great Neck, NY

Stephanie Ross, LCSW

Kaiser Permanente South Bay Medical Center
Harbor City, CA

Bharat Sachdeva, MD

Louisiana State University Shreveport
Shreveport, LA

Mala Sachdeva, MD

Northwell Health
Great Neck, NY

Tonya Saffer, MPH

National Kidney Foundation
Washington, DC

Loay Salman, MD

Albany Medical College
Albany, NY

Tara Sanders, MSN, MA, APRN, ACNP-BC, RD

Dallas Pulmonary Critical Care
Dallas, TX

Jessianna Saville, MS, RDN, CSR, LD

CKD Nutrition Coach
Bryan, TX

Deirdre Sawinski, MD, FAST

Hospital of the University of Pennsylvania
Philadelphia, PA

Jane Schell, MD, FNKF

University of Pittsburgh School of Medicine
Pittsburgh, PA

Jennifer Scherer, MD

New York University Langone Health
New York, NY

Karen Schwieter, RD

Fresenius Kidney Care
Phoenix, AZ

Kelli Scott, LMSW

Children's Mercy Kansas City
Kansas City, MO

Dawn Sears, MD

Baylor Scott & White Health
Temple, TX

David Serur, MD

New York Presbyterian - Weill Cornell
Rogosin Institute
New York, NY

Kara Shelton, LMSW

Children's Health
Dallas, TX

Richard Sherman, MD

Robert Wood Johnson Medical Group
New Brunswick, NJ

Vernon Silva, LCSW, NSW-C

U.S. Renal Care
San Pedro, CA

James F. Simon, MD

Cleveland Clinic
Cleveland, OH

Risa Simon, CMC

Transplant First Academy
Scottsdale, AZ

Leah Smith, MSN, FNP-BC, CNN-NP, FNKF

Metrolina Nephrology Associates
Charlotte, NC

Vivek Soi, MD

Henry Ford Health System
Detroit, MI

Sandeep Soman, MD, FNKF

Henry Ford Hospital
Detroit, MI

John Sperati, MD, MHS, FNKF

Johns Hopkins University School of
Medicine
Baltimore, MD

Helen Spicer, RN, CCTC

Virginia Transplant Center at Henrico
Doctors' Hospital
Richmond, VA

Jennifer St. Clair Russell, PhD, MEd, MCHES

Duke University School of Medicine
Durham, NC

David St-Jules, RDN, PhD

NYU School of Medicine, Center for
Healthful Behavior Change
New York, NY

Wendy St. Peter, PharmD

University of Minnesota
Minneapolis, MN

Alison Steiber, PhD, RD

Academy of Nutrition and Dietetics
Chicago, IL

Matt Stricherz, EdD

New Mexico Behavioral Health Institute
Montezuma, NM

Jennifer Sullivan, MD

University of Tennessee Health Science
Center
Memphis, TN

Mary Sundell, MLAS, RD, LDN, FNKF

Vanderbilt Dialysis Clinic
Nashville, TN

Harold Szerlip, MD, FNKF

Baylor Scott & White Health
Dallas Nephrology Associates
Dallas, TX

Sam Trevino, BA

Houston, TX

Jennifer Trofe-Clark, PharmD, FAST, FCCP, BCPS

Hospital of the University of Pennsylvania
Philadelphia, PA

Mandy Trolinger, MS, RD, PA-C, FNKF

Denver Nephrology
Denver, CO

Kevin Tucker, MD

Brigham and Women's Hospital
Boston, MA

Delphine Tuot, MDCM, MAS, FNKF

University of California, San Francisco
San Francisco, CA

Whitney Turkanis, LCSW, NSW-C

Fresenius Kidney Care
New York, NY

Jaime Uribarri, MD

Icahn School of Medicine at Mount Sinai
New York, NY

Tushar Vachharajani, MD, FASN, FACP

W.G. (Bill) Hefner VA Medical Center
Salisbury, NC

Gerald VanBolt, BA

Anthrosolutions LLC
Garfield Heights, OH

Mary Vilay, PharmD

University of New Mexico College of
Pharmacy
Albuquerque, NM

Ronald Wald, MD, MPH

St. Michael's Hospital
Toronto, ON, Canada

Eric Wallace, MD

University of Alabama at Birmingham
Birmingham, AL

Robbi Waller, LCSW

Fresenius Kidney Care
Edmond, OK

Rimda Wanchoo, MD

Northwell Health
Great Neck, NY

Angela Yee-Moon Wang, MD, PhD

University of Hong Kong, Queen Mary
Hospital
Hong Kong

Bradley Warady, MD, FNKF

Children's Mercy Kansas City
Kansas City, MO

Daniel Weiner, MD, MS, FNKF

Tufts Medical Center
Boston, MA

Barbara Weis Malone, DNP, FNP-C, FNKF

University of Colorado Anschutz Medical
Campus
Aurora, CO

Amy Weissman-Hunt, MSW, LCSW

Fresenius Kidney Care
Phoenix, AZ

Catherine Wells, DNP, ACNP-BC, CNN-NP, FNKF

University of Mississippi Medical Center
Jackson, MS

Nanette Wenger, MD, MACC, MACP, FAHA

Emory University School of Medicine
Atlanta, GA

Karen Wiesen, MS, RD, LD, FNKF

Geisinger Health System
Danville, PA

Kenneth Robert Wilund, PhD

University of Illinois at Urbana-
Champaign
Urbana, IL

Alexander Wiseman, MD, FAST

University of Colorado School of
Medicine
Denver, CO

Jay Wish, MD

Indiana University Health
Indianapolis, IN

Myles Wolf, MD

Duke University
Durham, NC

Leslie Wong, MD, MBA, FASN

Cleveland Clinic
Cleveland, OH

Alan Yu, MB, BChir

University of Kansas Medical Center
Kansas City, KS

Victor Yu, PhD, RD, BC-ADM

Fresenius Kidney Care
North Augusta, SC

Susan Zogheib, MHS, RD, LDN

University of Kansas Medical Center
Kansas City, KS

Kim Zuber, MS, PA-C, FNKF

American Academy of Nephrology PA's
Oceanside, CA

PROFESSIONAL EDUCATION RESOURCE CENTER

PERC

FREE* Online CME/CE for:

- Physicians
- Pharmacists
- Advanced Practitioners
- Nurses
- Dialysis Technicians
- Dietitians
- Social Workers
- Transplant Professionals



Benefits of PERC

- Personalized profile/login
- FREE for NKF members
- View your completed activities in one place
- More discipline-specific courses than ever before!
- Earn CME/CEs anytime, anywhere!

**Browse our
activity offerings
today!**

[kidney.org/education](https://www.kidney.org/education)

Check back regularly
for additional courses.

IMPORTANT DATES

FEB 9, 2018
APPLICATION
DEADLINE

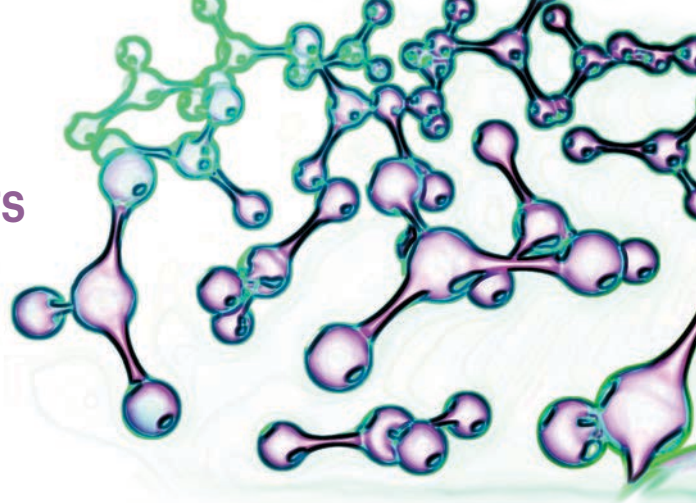
LATE SPRING 2018
NOTIFICATION
OF AWARDS

**JULY 1, 2018–
JUNE 30, 2019**
AWARD
PERIOD



National
Kidney
Foundation®

RESEARCH GRANTS



CALL FOR APPLICATIONS

**DEADLINE
FEBRUARY 9**

[KIDNEY.ORG/RESEARCHGRANT](https://www.kidney.org/researchgrant)

We are pleased to announce the availability of grant support during the period beginning **July 1, 2018**. These one-year awards include:

FOR JUNIOR FACULTY

- Two (2) NKF Young Investigator Grants
- One (1) Chastain Renal Research Grant of Arkansas
- One (1) Southeast Texas Research Grant
- One (1) Satellite Dialysis Clinical Investigator Grant of the NKF
- One (1) Edith H. Blattner Western Pennsylvania Young Investigator Grant

FOR ALL APPLICANTS

- One (1) Patient-Centered Outcomes Grant

The National Kidney Foundation gratefully acknowledges that the NKF Young Investigator Grant Program is made possible by support from, or in honor of, the following organizations and individuals:

American Society of Nephrology | Victor Chaltiel Foundation
Shaul G. Massry, MD | Pfizer Laboratories | Solomon Papper, MD
Patricia Welder Robinson | Donald Seldin, MD | George Schreiner, MD
Robert Schrier, MD | Hilda Gershon Sugarman



Members Get the Best Perks

Join or renew to get exclusive discounts on registration to the NKF 2018 Spring Clinical Meetings and practical resources at your fingertips – 365 days a year!

Additional NKF Member Benefits Include:

- Subscriptions to NKF journals and publications: *AJKD*, *ACKD*, *JRN*, *JNSW*, *RenaLink*, *Currently Kidney* (depending on discipline)
- Savings on all educational programs, resources, and items in the NKF online store
- Free online courses in NKF's Professional Education Resource Center (PERC)
- A chance to receive special NKF awards, scientific research grants, and educational stipends
- Eligibility for professional designations and certifications (depending on discipline).



kidney.org/membership



People are waiting for a chance at a better life. The kidney transplant waiting list is getting longer, and in response, the National Kidney Foundation (NKF) has developed THE BIG ASK: THE BIG GIVE. This initiative educates and raises awareness about living kidney donation and transplantation among kidney patients, their families, and friends.

THE BIG ASK

For people with kidney disease, asking someone to consider donating a kidney can seem impossible. Many won't get a transplant because they don't know how to ask or are uncomfortable with asking. NKF provides suggestions and tips on how to start a conversation about the possibility of donation.

THE BIG GIVE

The decision about whether to donate a kidney can be daunting. People considering living donation have many questions about what's involved. NKF offers factual, unbiased information addressing common concerns, and support in making the decision.



National
Kidney
Foundation®

NKF Cares Help Line—Trained professionals answer questions and provide confidential, one-on-one support to patients, families, and potential donors. Hours: Monday–Friday, 9:00am–5:00pm EST (English/Spanish). 844.2BIGASK (844.224.4275); bigask@kidney.org.

www.kidney.org/livingdonation—NKF's website provides information for kidney patients and potential donors.

#BigAskBigGive



**Kidney
Cars®**



Donate Your Car Today!

Help us save lives. It's quick, easy, and free! Just call or go online.
We will pick up your car and you could pick up a tax deduction.

KidneyCars.org

800.488.CARS

CALL FOR ABSTRACTS

ABSTRACT SUBMISSION
DEADLINE:

DECEMBER 1, 2017

WWW.NKFCLINICALMEETINGS.ORG

Take this opportunity to showcase your latest research results. Accepted abstracts will be published in the March/April 2018 issue of the *AJKD*, *ACKD*, *JRN*, or *JNSW* (depending on discipline) and posters will be presented at the NKF 2018 Spring Clinical Meetings. Prizes will be awarded to the top poster presenters.

Benefits in the presentation of original science include:

- Online availability for both abstracts and posters (NKF website and mobile app)
- Publication in a professional journal
- Exposure to 2,500-plus kidney healthcare professionals (via poster display)
- An opportunity to become one of the top poster presenters

*accepted abstracts only

Posters accepted and presented will be eligible for a prize. Posters will be judged on site by a specially designated committee.



For abstract submission instructions and additional information, visit www.nkfclinicalmeetings.org or contact us at clinicalmeetings@kidney.org



National
Kidney
Foundation®

30 East 33rd Street
New York, NY 10016

FUTURE NKF SPRING CLINICAL MEETINGS

2019 Boston, MA

Hynes Convention Center
May 7–11

2020 New Orleans, LA

Ernest N. Morial Convention Center
March 25–29

2021 Orlando, FL

Walt Disney World Swan and Dolphin
April 6–10

2022 Boston, MA

Hynes Convention Center
April 6–10



nkfclinicalmeetings.org

@NKFClinicals #NKFClinicals



Austin Convention Center
Austin, TX

Important Deadlines

Abstract Submission:
December 1, 2017

Educational Stipends:
January 12, 2018

Advance Registration:
January 26, 2018

Advance Housing Reservations:
February 16, 2018

© 2017 National Kidney Foundation, Inc. 02-77-7700_HBH