



2019
SPRING
CLINICAL
MEETINGS

PRELIMINARY PROGRAM



BOSTON

May 8 – 12, 2019

Hynes Convention Center

CALL FOR ABSTRACTS

ABSTRACT SUBMISSION DEADLINE:

DECEMBER 3, 2018

NKFCLINICALMEETINGS.ORG

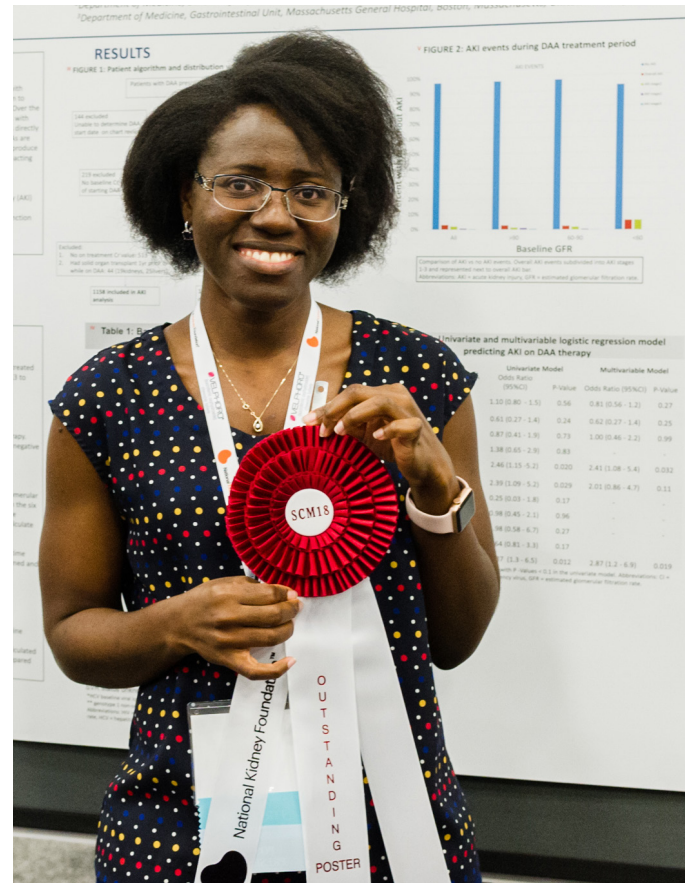
Take this opportunity to showcase your latest research results. Accepted abstracts will be published in the April/May 2019 issue of the *AJKD*, *ACKD*, *JRN*, or *JNSW* (depending on discipline) and posters will be presented at the NKF 2018 Spring Clinical Meetings. Prizes will be awarded to the top poster presenters.

BENEFITS IN THE PRESENTATION OF ORIGINAL SCIENCE INCLUDE:*

- ▶ Online availability for both abstracts and posters (NKF website and mobile app)
- ▶ Publication in a professional journal
- ▶ Exposure to 3,000-plus kidney healthcare professionals (via poster display)
- ▶ An opportunity to become one of the top poster presenters

**accepted abstracts only*

Posters accepted and presented will be eligible for a prize. Posters will be judged on site by a specially designated committee.



For abstract submission instructions and additional information, visit nkfclinicalmeetings.org or contact us at clinicalmeetings@kidney.org



2019
SPRING
CLINICAL
MEETINGS

TABLE OF CONTENTS

General Information.....	4
Educational Stipends	4
Poster Presentations/Exhibit Hall Activities	5
Award Recipients.....	6
Program Committee.....	8
Physician Program.....	9
Pharmacist Program.....	14
Advanced Practitioner Program	17
Nephrology Nurse Program.....	22
Technician Program.....	26
Renal and Clinical Dietitian Program.....	28
Nephrology Social Worker Program	32
Transplant Professional Program.....	36
Registration Information.....	39
Hotel Accommodations	40
Faculty	42

PRE-CONFERENCE COURSES
Wednesday, May 8

GENERAL SESSIONS
Thursday, May 9 – Sunday, May 12

ADVANCE REGISTRATION DEADLINE
February 22, 2019

Register at
NKFCLINICALMEETINGS.ORG

NEW FOR SCM19

- ▶ New Pre-Conference Courses on Supportive Care in Nephrology, Trauma Informed Care, and the Basics of CKD/ESRD for the Advanced Practitioner New to Nephrology
- ▶ Increased number of inter-professional sessions
- ▶ More MOC Points offered than ever before!

GENERAL INFORMATION

MEETING SITE

The headquarters for the NKF 2019 Spring Clinical Meetings (SCM19) is the Hynes Convention Center in Boston, MA. Located in the heart of Boston's historic Back Bay neighborhood, the Hynes Convention Center is surrounded by world-class shopping, dining, attractions, public transportation and other amenities, giving you the ultimate in flexibility and convenience. The Hynes is equipped with **Free Wi-Fi** access and complete cell phone coverage throughout the building, as well all-weather comfort, with **over 3,100 hotel rooms and more than 200 shops, restaurants** and visitor amenities actually connected to the convention spaces.

TARGET AUDIENCE

SCM19 is designed for nephrologists in private practice and academia, general internists, fellows and residents, pharmacists, physician assistants, nephrology nurses, technicians, nurse practitioners, nephrology social workers, renal and clinical dietitians, and transplant coordinators.

MEETING OBJECTIVES

At the conclusion of this activity, participants will be able to:

- ▶ Identify recent changes in healthcare policy and advances in clinical and translational research, and discuss how these may have an impact on the care of patients with kidney disease
- ▶ Integrate new discoveries in dialysis and non-dialysis chronic kidney disease, transplantation, hypertension, and other risk factors into clinical practice
- ▶ Enhance skills of the inter-professional team to encourage collaborative care, thereby improving outcomes of patients with kidney disease

DISCLOSURE AND CONFLICT OF INTEREST POLICY

It is the policy of the National Kidney Foundation (NKF) to ensure balance, independence, objectivity, and scientific rigor in all CME/CE activities. Any individual who has control over CME/CE content is required to disclose to learners any relevant financial relationship(s) they or their family members may have with commercial interests supporting this activity or whose products or devices are discussed in this activity. If, on the basis of information

disclosed, a conflict exists, resolution will be achieved based on established policies by NKF. Accredited status does not imply endorsement by NKF, ACCME, ACPE, or ANCC of any commercial products displayed in conjunction with this activity.

Faculty members are also required to disclose to the activity audience when an unlabeled use of a commercial product, or an investigational use not yet approved for any purpose, is discussed during an educational activity. The intent of this disclosure is to provide attendees with information prior to their participation in the educational activity, and allow the audience to be fully informed in the evaluation of the information being presented. The SCM19 Mobile App will note those individuals who have disclosed relationships, including the nature of the relationships and the associated commercial entities. This information will also be presented to the audience prior to the activity via podium announcement and slide presentation.

NKF'S EXPECTATION OF AUTHORS AND PRESENTERS

The Spring Clinical Meetings promote excellence in kidney healthcare. NKF expects that all authors and presenters affiliated with the NKF 2019 Spring Clinical Meetings will provide informative and fully accurate content that reflects the highest levels of scientific rigor and integrity.

EDUCATIONAL STIPENDS FOR NURSE PRACTITIONERS, PHYSICIAN ASSISTANTS, NURSES, TECHNICIANS, DIETITIANS, AND SOCIAL WORKERS

As part of their commitment to support continuing education, the **NKF Council of Advanced Practitioners (CAP)**, **Council of Nephrology Nurses and Technicians (CNNT)**, **Council on Renal Nutrition (CRN)**, and **Council of Nephrology Social Workers (CNSW)** will accept applications from NKF members for educational stipends of up to \$1,000 (based on discipline) to assist in attending SCM19. Stipends will be awarded on a first-come, first-serve basis. Persons presenting original research or abstracts may be given preference. The amount of the stipend will be based on travel distance. For an application and submission requirements, please visit:

nkfclinicalmeetings.org

Applications must be submitted by January 18, 2019.

NETWORKING LUNCHEONS

Kick off SCM19 with your colleagues at the Networking Luncheons! Join your colleagues to learn, meet and greet each other at these special events, which are hosted by the NKF Professional Councils: CAP, CNNT, CRN, and CNSW. All are welcome. The CRN and CNSW luncheons will be held on Thursday, May 9, from 12:00pm to 2:00pm. The CAP and CNNT luncheons will be held Friday, May 10, from 12:00pm to 2:00pm.

SPONSORSHIP

Companies interested in supporting the NKF 2019 Spring Clinical Meetings should contact Stephanie Cogan, Vice President, Corporate Relations, at **StephanieC@kidney.org** or 212.889.2210 ext. 166.

POSTER PRESENTATIONS AND EXHIBIT HALL ACTIVITIES

Posters will be available for viewing in the Exhibit Hall beginning on **Thursday, May 9, at 6:00pm** through **Saturday, May 11, at 10:00am**. Take advantage of this outstanding opportunity to earn 1.0 CME/CE credit/contact hour, share in the authors' research experiences, and discuss significant advances in the field of kidney disease.

POSTER PRESENTATIONS & EXHIBIT HALL ACTIVITIES*

Thursday, May 9	6:00pm – 7:30pm	Opening Ceremonies and Faculty Reception – Poster Authors Available for Q&A
Friday, May 10	7:00am – 8:30am	Continental Breakfast; Visit Posters/Exhibits
	12:00pm – 2:00pm	Lunch Served 12:00pm–1:30pm; Visit Posters/Exhibits
	5:30pm – 7:00pm	Networking Reception; Visit Posters/Exhibits
Saturday, May 11	7:00am – 10:00am	Breakfast Served until 9:00am; Visit Posters/Exhibits
	10:00am	Exhibit Hall Closes

**Hours subject to change.*

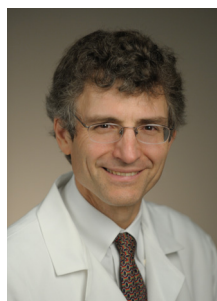
AWARD RECIPIENTS

Congratulations to the NKF SCM19 Award Winners!



The Donald W. Seldin Award

Jerry Yee, MD
Henry Ford Health System
Detroit, MI



The Shaul G. Massry

Distinguished Lecture
Gregory Germino, MD
National Institutes of Health
Bethesda, MD



The David M. Hume Memorial Award

Neil Powe, MD
University of California—
San Francisco
San Francisco, CA



The Garabed Eknoyan Award

Charmaine Lok, MD
Toronto General Hospital
Toronto, Ontario, Canada



The J. Michael Lazarus Distinguished Award

Beth Piraino, MD
University of Pittsburgh
Pittsburgh, PA



The Joel D. Kopple Award

Katy Wilkens, MS, RD
Northwest Kidney Centers
Seattle, WA



The Medical Advisory Board Distinguished Service Award

Ahmed Malik, MD, MPhil
Milwaukee Nephrologists SC
Milwaukee, WI



The Carol Mattix Award

Anne Diroll, RN, CNN, CLNC
Fresenius Kidney Care
Rocklin, MD

Biographical information about the Award
Winners can be seen at nkfclinicalmeetings.org



PROFESSIONAL COUNCIL AWARDS

Council of Advanced Practitioners

Tim Poole Memorial Award:

Cynthia Smith, DNP, CNN-NP, FNP-BC, APRN, FNKF
Renal Consultants, PLLC, Sissonville WV

Nostradamus Award:

Ann Mooney, MSN, RN, CNN
American Renal Associates, Beverly MA

Council of Nephrology Social Workers

Lifetime Achievement:

Wendy Schrag, LMSW, ACSW
Fresenius Medical Care North America, Newton, KS

Merit Award:

Denise Collins, MSSW, LCSW-C, LICSW, NSW-C
Kaiser Permanente, Rockville, MD

Melissa Percy, LCSW

St. Joseph Hotel Renal Center, Orange, CA

Susan S Walker, LMSW, CCTSW

Beaumont Royal Oak, Royal Oak, MI

Award for Social Work in a Pediatric Setting:

Cristina Hernandez, LCSW, LMSW
Children's Mercy Hospital, Kansas, MO

New Worker Award:

Adriana Mendez, MSW
U.S. Renal Care Beverly Hills, Beverly Hills, CA

Regional Social Work Award:

Region 1: Gwendolyn Vincent Gerome, MSW, LICSW,
NSW-C

VA Boston Healthcare System, Boston, MA

Region 3: Heather Palmer, LCSW

Fresenius Kidney Care, Danville, IN

Region 5: Nina Abiera, LCSW, NSW-C, MPA

U.S. Renal Care West Los Angeles, Los Angeles, CA

Council of Nephrology Nurses & Technicians

Outstanding Nurse Award:

Lourdes Bautista, RN
Davita Jersey City, North Bergen, NJ

Outstanding Dialysis Technician Award:

Dyvonnette Greenwood
Davita North Houston, Houston, TX

Carol Mattix Award:

Anne Diroll, RN, CNN, CLNC
Fresenius Kidney Care, Rocklin, MD

Council on Renal Nutrition

Joel D. Kopple Award:

Katy Wilkins, MS, RDN, FNKF
Northwest Kidney Centers, Seattle, WA

Outstanding Service Award:

Janelle Gonyea, RDN, LD
Mayo Clinic, Rochester, MN

Recognized Renal Dietitian Award:

Haewook Han, PhD, RD, CSR, LDN, FNKF
Harvard Vanguard Medical Associates, Boston, MA

Regional Recognized Renal Dietitian Award

Region 1: Liz Kirk, RDN, CDN
SilverStreamRD, Rochester, NY

Region 2: Carolyn Feibig, MS, RD, LD

The George Washington University Transplant Institute,
Washington, DC

Region 3: Amie Ritchie, RD, CSR

Davita Dialysis, Ann Arbor, MI

Region 4: Matilde Ladnier, RD, LD

Davita Greatwood, Sugar Land, TX

Region 5: Erin Hintz, MS, RD, CSR

Wellbound San Mateo, San Mateo, CA

Susan C. Knapp Award:

Marie Becker, MS, RD, LDN
Davita Central Orlando, Orlando, FL

PROGRAM COMMITTEE

Harold Szerlip, MD, FNKF

Program Chair
Baylor Scott & White Health
Dallas, TX

Mark Perazella, MD, FNKF

Program Co-Chair
New Haven, CT

Kenneth Abreo, MD

Louisiana State University-Shreveport
Shreveport, LA

Christine Barrett, MS, RDN, LD, FNKF

Renal and Clinical Dietitian
Program Co-Chair
DaVita Leavenworth
Leavenworth, KS

Laurie Benton, PhD, MPAS, PA-C, RN, FNKF

Advanced Practitioner Program
Co-Chair
Baylor Scott and White Medical Center
Temple, TX

Kevin Ceckowski, MSW, LMSW, FNKF

Nephrology Social Work
Program Co-Chair
Walter Reed National Military
Medical Center
Bethesda, MD

Christopher Chan, MD

University Health Network
Toronto, Ontario, Canada

Robert Cohen, MD, FNKF

Beth Israel Deaconess Medical Center
Boston, MA

Michael Connor, MD

Emory University School of Medicine
Atlanta, GA

Michael Emmett, MD

Baylor University Medical Center
Dallas, TX

Jennifer Flythe, MD

UNC Kidney Center
Chapel Hill, NC

Lynne Gafford, FNP-BC, FNKF

Advanced Practitioner Program Chair
Henry Ford Health System
Rochester Hills, MI

Bernard Jaar, MD, MPH, FNKF

Johns Hopkins University
Baltimore, MD

Jaya Kala, MD

McGovern Medical School-
University of Texas
Houston, TX

Jessica Joseph, MBA

Vice President, Scientific Activities
National Kidney Foundation
New York, NY

Jonathan Hogan, MD

University of Pennsylvania
Cherry Hill, NJ

Joanna Hudson, PharmD, BCPS, FASN, FCCP, FNKF

The University of Tennessee Health
Science Center
Memphis, TN

Mary Lincoln, RN, BSN, MHA

Nephrology Nurse and Technician
Program Co-Chair
Mercy Health
Dewitt, IA

Jennifer McClain, MSW, LSW, NSW-C

Nephrology Social Work
Program Chair
Fresenius Medical Care – Fire Mesa
Dialysis
Las Vegas, NV

Beth Morlang, RD, LD, FNKF

Renal and Clinical Dietitian
Program Chair
Central Florida Kidney Centers
Palm Bay, FL

Danielle Nathan

Senior Director, Professional Education
National Kidney Foundation
New York, NY

Marianne Neumann, RN, CNN, FNKF

Nephrology Nurse and Technician
Program Chair
Albany Regional Kidney Center
Rensselaer, NY

Aldo Peixoto, MD

Yale University School of Medicine
New Haven, CT

Ana Ricardo, MD

University of Illinois At Chicago
Chicago, IL

Deirdre Sawinski, MD, FAST

Hospital of the University of
Pennsylvania
Philadelphia, PA

Kathryn Troy, MPH

Professional Education Manager
National Kidney Foundation
New York, NY

Jaime Uribarri, MD

Icahn School of Medicine at
Mount Sinai
New York, NY

EX OFFICIO

Holly Kramer, MD, MPH

NKF President
Loyola University Chicago
Maywood, IL

Joseph Vassalotti, MD, FNKF

Chief Medical Officer
National Kidney Foundation
New York, NY

PHYSICIAN PROGRAM

ACCREDITATION STATEMENT



The National Kidney Foundation is accredited by the American Nurses Credentialing Center (ANCC), the Accreditation Council for Pharmacy Education (ACPE), and the Accreditation Council for Continuing Medical Education (ACCME), to provide continuing education for the healthcare team.

DESIGNATION STATEMENT

The National Kidney Foundation designates this live activity for a maximum of 24.25* *AMA PRA Category 1 Credits™*. Physicians should claim only the credit commensurate with the extent of their participation in the activity.

**Note: Acquiring 24.25 credits requires continuous participation from Thursday morning through Sunday morning. Many participants opt for periodic breaks, which make their credits somewhat less. Additional credits are provided for courses requiring separate registration.*

**As of October 2018*

PRE-CONFERENCE COURSES

Wednesday, May 8

REQUIRED: Separate registration fee of \$200 for NKF Members, \$225 for Non-Members, \$100 for Fellows and Residents; includes light breakfast, box lunch, and CME credits. Participation is limited, so register early.

Transplant Update: 2019

Course Director: Deirdre Sawinski, MD, FAST

7:30am – 5:30pm

Session 220, 7.0 credits

Target Audience: Designed for community nephrologists, transplant nephrologists, general and transplant nephrology fellows, transplant coordinators, and other professionals involved in the care of kidney transplant candidates, recipients, and living donors.

Course Description: This course is designed to offer the attendee a comprehensive overview of contemporary issues in immunosuppression, donor selection, recipient evaluation, and management of post-transplant complications. National experts will discuss current policies and best practices to expand transplant options, evaluate and select donors and recipients, and optimize care before, during, and after transplantation.

Successful Dialysis: Who, What, Where, When, and How

Course Directors: Jenny Flythe, MD, MPH, and Jeffrey Perl, MD, SM, FRCPC

7:30am – 5:00pm

Session 221, 8.0 credits

Target Audience: Designed for nephrologists, nephrology fellows, advanced practitioners, and nephrology nurses (essentially, anyone who is interested in caring for people with kidney failure).

Course Description: This course will deliver a comprehensive update in current dialysis management. The speakers are experts in varied aspects of dialysis care and will review current best practices, complications and common pitfalls in dialysis management. Attendees will benefit from case-based reviews and discussions ranging from the optimal timing of dialysis initiation, choosing the appropriate dialysis prescription, access management, and complications of peritoneal dialysis and hemodialysis.

Basics of Vascular Access: The Practical Essentials

Course Directors: Kenneth Abreo, MD, and Vandana Niyar, MD

7:30am – 12:30pm

Session 223, 4.5 credits

Target Audience: The target audience for this course is physicians, physician assistants, nurse practitioners, nurses, and dialysis technicians who take care of hemodialysis patients.

Course Description: This course aims to create an informal training curriculum on dialysis vascular access, as well as deliver a comprehensive overview on the “nitty-gritties” in managing optimal access care. Attendees will benefit from case-based reviews and discussions, ranging

from vascular anatomy, planning of vascular access, monitoring for access dysfunction, strategies to manage primary and secondary failures, local and systemic complications secondary to permanent AV access, and various treatment options to salvage a failing vascular access. The speakers are experts and leaders in the field of dialysis vascular access.

Point-of-Care Ultrasound for the Nephrologist

Course Directors: Daniel Ross, MD

7:30am – 12:30pm

Session 222,

1:00pm – 6:00pm

Session 226, 4.25 credits

Target Audience: Designed for physicians, fellows, and residents.

Course Description: The renal consultant needs knowledge of lung ultrasound to determine volume status, renal and bladder ultrasounds to evaluate for obstruction, and knowledge of vascular access guidance to assist in placement of catheters. This course will focus on the following elements in point-of-care ultrasonography.

- ▶ Image acquisition will be practiced on human models using high-quality ultrasound machines, and supervised by experienced faculty. Training sessions give you practical, hands-on training with a 1:3 teacher-to-learner ratio, so that the learner will benefit from personal instruction.
- ▶ Image interpretation during group sessions, under the supervision of experienced faculty members will offer relevant practice. Numerous ultrasound images demonstrating normal and pathologic findings will provide a comprehensive learning opportunity. As participants improve their skills, they will be further challenged with unknowns and case-based image sets.
- ▶ Knowledge base will be enhanced with lectures that focus on important aspects of point-of-care ultrasonography applicable to the renal consultant. Discussions will have immediate application within learner's practice.

Glomerular Diseases: Updates on Pathogenesis and Treatment

Course Directors: Gerald Appel, MD, FNKF,

Fernando Fervenza, MD, PhD, FNKF, and

Jonathan Hogan, MD

8:00am – 6:00pm

Session 224, 9.0 credits

Target Audience: Designed for nephrologists, nephrology fellows and advanced practitioners.

Course Description: Glomerular diseases have historically been some of the most difficult kidney disorders to understand and treat. In the last decade, there has been significant progress in the understanding and treatment of many glomerular diseases. This course will utilize lectures, question-and-answer sessions, clinico-pathologic case presentations, and panel sessions to provide an in-depth review of the current approach to the diagnosis and treatment of glomerular diseases. When applicable, this course will emphasize how to incorporate recent scientific advances into the routine clinical management of patients with these diseases. Participating faculty are nationally and internationally recognized experts in glomerular disease. The course should be of special interest to Nephrologists who manage patients with glomerular diseases and/or are looking for an update on the subject.

Supportive Care in Nephrology: Teaching the Clinician, Treating the Patient

Course Director: Robert Cohen, MD, FNKF

1:00pm – 6:00pm

Session 225, 4.75 credits

Target Audience: Designed for nephrologists, nephrology fellows, advance practitioners, nurses and social workers

Course Description: Patients with kidney disease often have additional conditions that limit their survival, cause distressing symptoms and impact the quality of life. Supportive care is individualized, patient-centered care aimed to enhance the experience and quality of life for patients living with chronic kidney disease. It involves effective communication to elicit and respect patients' values and preferences; management of pain and other burdensome symptoms. This half-day course will equip nephrology clinicians with the knowledge, skills, and tools to deliver effective supportive care to their patients.

Updates in Critical Care Nephrology

Course Director: Laurie Benton, PhD, MPAS, PA-C, RN and Ron Wald, MD

7:30am – 5:30pm

Session 620, 8.5 credits

See page 17 for details

LUNCH WORKSHOPS

REQUIRED: Separate registration fee of \$50; includes box lunch and CME credits. Participation is limited to 75 each, so register early.

Thursday, May 9, 12:00pm–2:00pm

The Long and Perilous Path to the Best Possible Vascular Dialysis Access

Session 230

Chair: Kenneth Abreo, MD

Workshop Description: This workshop will focus on the problems and pitfalls of choosing the right enduring access in the ESRD patient. The talks and discussions will be case-based and practical. Methods to increase home dialysis therapies will be discussed. The role of early planning and prompt intervention with regards to AVFs placement and maturity with the goal of decreasing TDC use will be explored. The emerging role of AVGs in special populations to decrease TDC dependence will be discussed. The prevention and treatment of infectious complications of TDCs will be discussed.

Glomerular Disease: Achieving Remissions, Managing Relapses

Session 231

Chair: Jonathan Hogan, MD

Workshop Description: This interactive lunch workshop will use case-based learning to highlight three important and complex glomerular diseases: lupus nephritis, IgA nephropathy, and membranous nephropathy. The presenters are nationally and internationally-recognized experts who will review how recent advances have changed the paradigm of diagnosing and treating these diseases, with specific emphasis on clinically significant endpoints, as well as the definition and treatment of disease relapse. Participants will gain an understanding of how to incorporate recent advances in the diagnosis and treatment of these diseases into routine clinical practice.

Challenging Issues in Hypertension

Session 232

Chairs: Deirdre Sawinski, MD, FAST, and Jordana Cohen, MD

Workshop Description: There are some hypertensive patients that always keep you on your toes. This workshop deals with four such conditions: pregnancy, obesity, pheochromocytoma, dysautonomia. The newest evidence and optimal approaches to managing these patients will be reviewed.

Electrolytes and Acid-Base

Session 233

Chair: Michael Emmett, MD

Workshop Description: This interactive workshop will consist of presentations of acid-base and electrolyte cases by experts in the field. Attendees will be asked to suggest differential diagnoses, best next steps, final diagnoses, as well as the most appropriate treatment plan.

Saturday, May 11, 12:00pm – 1:30pm

Reproductive Health and Renal Disease

Session 234

Chairs: Deirdre Sawinski, MD, FAST, and Jaya Kala, MD

Workshop Description: In this workshop, experts in the field will review the range reproductive health issues in patients with renal disease. The impact of CKD, ESRD and transplantation on fertility and pregnancy outcomes will be discussed. Other topics include: assisted reproductive technologies, contraception and immunosuppression management for the pregnant patient.

Salty Propositions: Management of Hyponatremia in 2019

Session 235

Chair: Jerry Yee, MD, FNKF

Workshop Description: Morbid complications of hyponatremia are well-described. However, when confronted by hyponatremia in more extreme circumstances, appropriate treatment requires extreme thinking, with a deep appreciation of pathophysiological principles of water and sodium metabolism. Attend this state-of-the-art workshop to reinvigorate your knowledge regarding hyponatremia and quantitative, modern day therapies for major, modern day problems.

Teach Each Other Well: Improving Communication Between Providers and Patients/Family Members

Session 236

Chair: Robert Cohen, MD, FNKF

Workshop Description: This interactive, inter-professional workshop will teach communication tools for challenging conversations between nephrology providers and patients and family members regarding end-stage kidney disease decisions. Cases will be discussed to highlight skills that can be used for these difficult discussions.

Board Review

Session 237

Chair: Harold Szerlip, MD, FNKF

Workshop Description: During this interactive workshop you will be entertained with board style clinical vignettes ranging from the simple to the more complex. Cases covered will include electrolyte disorders, acid-base disturbances, chronic kidney disease, dialysis and AKI. Lively discussion is guaranteed, and controversy is a possibility. At the end of this workshop you will feel more confident in your knowledge and test-taking skills.

PHYSICIAN PROGRAM

Wednesday, May 8

TIME	SESSION #	SESSION	NOTES
7:30am – 5:30pm	220	Transplant Update: 2019	●
7:30am – 5:15pm	620	Updates in Critical Care Nephrology	●
7:30am – 5:00pm	221	Successful Dialysis: Who, What, Where, When and How	●
7:30am – 12:30pm	222	Point of Care Ultrasound for the Nephrologist	●
7:30am – 12:30pm	223	Basics of Vascular Access: The Practical Essentials	●
8:00am – 6:00pm	224	Glomerular Diseases: Updates on Pathogenesis and Treatment	●
1:00pm – 6:00pm	225	Supportive Care in Nephrology: Teaching the Clinician, Treating the Patient	●
1:00pm – 6:00pm	226	Point of Care Ultrasound for the Nephrologist	●
6:30pm – 8:30pm	100	Fellows Networking Reception/Career Choices in Nephrology	

Thursday, May 9

TIME	SESSION #	SESSION	NOTES
8:00am – 9:30am	260	A Growing Problem: Obesity in CKD and Transplantation	◇
8:00am – 9:30am	261	Back to the Future: KDOQI Guidelines and Novel Innovations in Vascular Access for Hemodialysis	
8:00am – 9:30am	262	Bicarbonate & Kidney Failure – Too Much, Too Little, Just Right?	◇
8:00am – 9:30am	660	Diabetes: Treatment and CKD	↔
9:30am – 10:00am		Break	
10:00am – 11:30am	263	Innovation and Evolution of Dialysis Practice	
10:00am – 11:30am	264	Managing the Glomerular Emergencies	◇
10:00am – 11:30am	265	Critical Care Nephrology Updates	◇
11:30am – 12:00pm		Break	
12:00pm – 2:00pm	230	Workshop: The Long and Perilous Path to the Best Possible Vascular Dialysis Access	●
12:00pm – 2:00pm	231	Workshop: Glomerular Disease: Achieving Remissions, Managing Relapses	●
12:00pm – 2:00pm	232	Workshop: Challenging Issues in Hypertension	● ◇
12:00pm – 2:00pm	233	Workshop: Electrolytes and Acid-Base	●
2:00pm – 2:15pm		Break	
2:15pm – 4:00pm	266	Keynote Address and Shaul G. Massry Distinguished Lecture	
4:00pm – 4:15pm		Break	
4:15pm – 5:45pm	267	KDOQI Guidelines Update	◇
4:15pm – 5:45pm	268	Use of Peritoneal Dialysis in Non-Renal Organ End Stage	●
6:00pm – 7:30pm		Opening Ceremonies and Reception in the Exhibit Hall – Visit Posters/Exhibits	

Friday, May 10

TIME	SESSION #	SESSION	NOTES
7:00am – 8:30am		Continental Breakfast in the Exhibit Hall – Visit Posters/Exhibits	
8:15am – 9:45am	269	Debate: APOL1 Testing in Living Kidney Donation	
8:15am – 9:45am	270	Cutting Edge to Clinical Practice: Novel Testing in Kidney Disease	◇
8:15am – 9:45am	271	Resistant Hypertension	◇
9:45am – 10:15am		Break	
10:15am – 11:45am	272	Opioid Stewardship in CKD and Transplant Patients: An Overlooked Problem?	◇
10:15am – 11:45am	273	Acute Renal Replacement Therapy: Best Practices and Special Circumstances	
10:15am – 11:45am	274	Increasing Home Dialysis: Focus on Attrition and Transition	
11:45am – 2:00pm		Break	
2:00pm – 3:30pm	275	Novel Methods to Prevent Drug Induced Nephrotoxicity	◇
2:00pm – 3:30pm	276	Hypertension Guidelines: Commentary from KDOQI	◇
2:00pm – 3:30pm	277	Trainee Poster Tour	
3:30pm – 4:00pm		Break	
4:00pm – 5:30pm	278	Debate: Do the SGLT-2 Inhibitors Cause AKI?	◇
4:00pm – 5:30pm	279	What's "Old" Is New Again: Incorporating Geriatric Assessments Across the Kidney Disease Spectrum	
4:00pm – 5:30pm	280	Career Advancement for Fellows	
4:00pm – 5:30pm	295	Never Say Never: Looking at Potential Transplant Candidates Differently	
5:30pm – 7:00pm		Networking Reception in the Exhibit Hall – Visit Posters/Exhibits	

Saturday, May 11

TIME	SESSION #	SESSION	NOTES
7:00am – 10:00am		Break in the Exhibit Hall (Breakfast Served 7:00am – 8:30am) – Visit Posters/Exhibits	
8:45am – 9:45am	281	Lazarus Lecture: Peritoneal Dialysis – Past and Present	◇
9:45am – 10:00am		Break	
10:00am – 11:30am	282	Renal Cell Cancer	
10:00am – 11:30am	283	Debate: V2 Receptor Inhibition in PKD	◇
10:00am – 11:30am	284	Breaking Bad: Overcoming Barriers for Nephrology Communication	
11:30am – 12:00pm		Break	
12:00pm – 1:30pm	234	Workshop: Reproductive Health and Renal Disease	● ◇
12:00pm – 1:30pm	235	Workshop: Salty Propositions: Management of Hyponatremia in 2019	● ◇
12:00pm – 1:30pm	236	Workshop: Teach Each Other Well: Improving Communication Between Providers and Patients/Family Members	●
12:00pm – 1:30pm	237	Workshop: Board Review	●
1:30pm – 2:00pm		Break	
2:00pm – 3:30pm	285	We Need to Talk: Depression and Anxiety in Dialysis	⇄ ◇
2:00pm – 3:30pm	286	Arrhythmias and Sudden Death in Dialysis Patients: Old Problem, New Options	◇
2:00pm – 3:30pm	287	Social Media and Medicine: Beginning the Second Era	◇
3:30pm – 4:00pm		Break	
4:00pm – 5:30pm	288	How Can We Deliver Palliative Care to Our Patients: A Practical, Team-Based Approach	
4:00pm – 5:30pm	289	Nephrology Without Borders	◇
4:00pm – 5:30pm	290	Burnout in the Nephrology Workforce: Quo Vadis?	

Sunday, May 12

TIME	SESSION #	SESSION	NOTES
8:00am – 9:30am	291	Gadolinium: Friend or Foe	◇
8:00am – 9:30am	292	Lifestyle Interventions for Clinicians to Optimize Patient Outcomes	⇔
9:30am – 10:00am		Break	
10:00am – 11:30am	293	Serum Phosphate as a Therapeutic Goal in Dialysis Patients	◇
10:00am – 11:30am	294	Acute Kidney Injury in Cancer	◇
11:30am		Meeting Adjourns	

● Separate Registration and/or Fee Required ◇ ABIM MOC Points Offered ⇔ Interprofessional Session

Visit nkfclinicalmeetings.org for additional program details and up-to-date information on SCM19.

PHARMACIST PROGRAM

CONTINUING EDUCATION INFORMATION



The National Kidney Foundation is accredited by the American Nurses Credentialing Center (ANCC), the Accreditation Council for Pharmacy Education (ACPE), and the Accreditation Council for Continuing Medical Education (ACCME), to provide continuing education for the healthcare team.

LUNCH WORKSHOPS

REQUIRED: Separate registration fee of \$50; includes box lunch and CME credits. Participation is limited to 75 each, so register early.

Thursday, May 9, 12:00pm – 2:00pm

Challenging Issues in Hypertension

Session 232

Chairs: Deirdre Sawinski, MD, FAST, and Jordana Cohen, MD

Workshop Description: There are some hypertensive patients that always keep you on your toes. This workshop deals with four such conditions: pregnancy, obesity, pheochromocytoma, dysautonomia. The newest evidence and optimal approaches to managing these patients will be reviewed.

Managing Co-Morbidities in the Hospitalized Patient

Session 630

Chair: Robin Dauterive, MD

Workshop Description: Often patients present with more than just kidney disease when admitted to the hospital. This workshop will use case studies to define the steps used in identifying and managing co-morbidities such as respiratory, cardiac and GI in the acute hospital setting taking into consideration the dilemmas that arise due to CKD and ESRD. Attendees will also delve into measures to prevent Acute Kidney Injury in the hospitalized patient.

Saturday, May 11, 12:00pm – 1:30pm

Reproductive Health and Renal Disease

Session 234

Chairs: Deirdre Sawinski, MD, FAST, and Jaya Kala, MD

Workshop Description: In this workshop, experts in the field will review the range reproductive health issues in patients with renal disease. The impact of CKD, ESRD and transplantation on fertility and pregnancy outcomes will be discussed. Other topics include: well assisted reproductive technologies, contraception and immunosuppression management for the pregnant patient.

Salty Propositions: Management of Hyponatremia in 2019

Session 235

Chair: Jerry Yee, MD, FNKF

Workshop Description: Morbid complications of hyponatremia are well-described. However, when confronted by hyponatremia in more extreme circumstances, appropriate treatment requires extreme thinking, with a deep appreciation of pathophysiological principles of water and sodium metabolism. Attend this state-of-the-art workshop to reinvigorate your knowledge regarding hyponatremia and quantitative, modern day therapies for major, modern day problems.

PHARMACIST PROGRAM

Thursday, May 9

TIME	SESSION #	SESSION	NOTES
8:00am – 9:30am	260	A Growing Problem: Obesity in CKD and Transplantation	
8:00am – 9:30am	661	Update in Transplantation	
8:00am – 9:30am	262	Bicarbonate & Kidney Failure – Too Much, Too Little, Just Right?	
8:00am – 9:30am	660	Diabetes: Treatment and CKD	↔
8:00am – 9:30am	560	KDOQI Nutrition and MBD Updates	
9:30am – 10:00am		Break	
10:00am – 11:30am	264	Managing the Glomerular Emergencies	
10:00am – 11:30am	265	Critical Care Nephrology Updates	
10:00am – 11:30am	662	Managing Treatment Issues with Anemia and Bloodborne Diseases	
11:30am – 12:00pm		Break	
12:00pm – 2:00pm	232	Workshop: Challenging Issues in Hypertension	•
12:00pm – 2:00pm	630	Workshop: Managing Co Morbidities in the Hospitalized Patient	•
2:00pm – 2:15pm		Break	
2:15pm – 4:00pm	266	Keynote Address and Shaul G. Massry Distinguished Lecture	
4:00pm – 4:15pm		Break	
4:15pm – 5:45pm	267	KDOQI Guidelines Update	
4:15pm – 5:45pm	664	Flowing Waters: Urinalysis and Diuretic Therapy	
6:00pm – 7:30pm		Opening Ceremonies and Reception in the Exhibit Hall – Visit Posters/Exhibits	

Friday, May 10

TIME	SESSION #	SESSION	NOTES
7:00am – 8:30am		Continental Breakfast in the Exhibit Hall – Posters/Exhibits	
8:15am – 9:45am	270	Cutting Edge to Clinical Practice: Novel Testing in Kidney Disease	
8:15am – 9:45am	271	Resistant Hypertension	
8:15am – 9:45am	666	“I’ve got a Bone to Pick with You...” Update with the Beans and the Bones Discussion of Ca/Phos/Calciphylaxis	
9:45am – 10:15am		Break	
10:15am – 11:45am	272	Opioid Stewardship in CKD and Transplant Patients: An Overlooked Problem?	
11:45am – 2:00pm		Break	

Friday, May 10 (Continued)

TIME	SESSION #	SESSION	NOTES
2:00pm – 3:30pm	275	Novel Methods to Prevent Drug Induced Nephrotoxicity	
2:00pm – 3:30pm	276	Hypertension Guidelines: Commentary from KDOQI	
3:30pm – 4:00pm		Break	
4:00pm – 5:30pm	278	Debate: Do the SGLT-2 Inhibitors Cause AKI?	
4:00pm – 5:30pm	573	K-alciphylaxis (Vitamin K and Dialysis)	
5:30pm – 7:00pm		Networking Reception in the Exhibit Hall – Visit Posters/Exhibits	

Saturday, May 11

TIME	SESSION #	SESSION	NOTES
7:00am – 10:00am		Break in the Exhibit Hall (Breakfast Served 7:00am – 8:30am) – Visit Posters/Exhibits	
8:30am – 8:45am		Break	
8:45am – 9:45am	281	Lazarus Lecture: Peritoneal Dialysis – Past and Present	
9:45am – 10:00am		Break	
10:00am – 11:30am	283	Debate: V2 Receptor Inhibition in PKD	
10:00am – 11:30am	575	Use of Probiotics to Slow Down CKD	
11:30am – 12:00pm		Break	
12:00pm – 1:30pm	234	Workshop: Reproductive Health and Renal Disease	●
12:00pm – 1:30pm	235	Workshop: Salty Propositions: Management of Hyponatremia in 2019	●
1:30pm – 2:00pm		Break	
2:00pm – 3:30pm	285	We Need to Talk: Depression and Anxiety in Dialysis	⇔
2:00pm – 3:30pm	286	Arrhythmias and Sudden Death in Dialysis Patients: Old Problem, New Options	
2:00pm – 3:30pm	287	Social Media and Medicine: Beginning the Second Era	
3:30pm – 4:00pm		Break	
4:00pm – 5:30pm	289	Nephrology Without Borders	
4:00pm – 5:30pm	676	Rising to the Challenge of Resistant Hypertension and Hypo/Hypernatremia	

Sunday, May 12

TIME	SESSION #	SESSION	NOTES
8:00am – 9:30am	291	Gadolinium: Friend or Foe	●
9:30am – 10:00am		Break	
10:00am – 11:30am	293	Serum Phosphate as a Therapeutic Goal in Dialysis Patients	
10:00am – 11:30am	294	Acute Kidney Injury in Cancer	
11:30am		Meeting Adjourns	

● Separate Registration and/or Fee Required ⇔ Interprofessional Session

Visit nkfclinicalmeetings.org for additional program details and up-to-date information on SCM19.

ADVANCED PRACTITIONER PROGRAM

PLANNING COMMITTEE

Lynne Gafford, FNP-BC, FNKF

Program Chair
Henry Ford Health System
Detroit, MI

Laurie Benton, PhD, MPAS, PA-C, RN

Program Co-Chair
Baylor Scott and White Medical Center
Temple, TX

Joanne Hindlet, ACNP, BC CNN-NP, FNKF

Houston Nephrology Group
Houston, TX

Alison Kaprove, MS, PA-C

Tufts Medical Center
Boston, MA

Becky Ness, PA-C, FNKF

Mayo Clinic Health System
Mankato, MN

Schawana Thaxton DNP, NP-C

Henry Ford Health System
Detroit, MI

GOAL

To improve patient outcomes by enhancing advanced practitioners' knowledge base and skills that will have a direct impact on clinical practice in a variety of settings.

CONTINUING EDUCATION INFORMATION



The National Kidney Foundation is accredited by the American Nurses Credentialing Center (ANCC), the Accreditation Council for Pharmacy Education (ACPE), and the Accreditation Council for Continuing Medical Education (ACCME), to provide continuing education for the healthcare team.

Awarded 24.25* contact hours of continuing nursing education.

AAPA accepts Category I credit from AOACCME, prescribed credit from AAFP, and AMA PRA Category I Credit(s)[™] from organizations accredited by ACCME. Physician assistants may receive a maximum of 24.25* hours of Category I credit for completing this program.

**Note: Acquiring 24.25 hours requires continuous participation from Thursday morning through Sunday morning. Many participants opt for periodic breaks, which make their credits/contact hours somewhat less. Additional credits/contact hours are provided for courses requiring separate registration.*

**As of October 2018*

PRE-CONFERENCE COURSES

Wednesday, May 8

REQUIRED: Separate registration fee (see below for pricing). Includes light breakfast and/or box lunch, and CME/CE credits/contact hours. Participation is limited, so register early.

PRICING

Half-Day Courses: \$60 NKF Members, \$75 Non-Members

Full-Day Courses: \$200 NKF Members, \$225 Non-Members

Updates in Critical Care Nephrology

Course Directors: Laurie Benton, PhD, MPAS, PA-C, RN, FNKF and Ron Wald, MD

7:30am – 5:30pm

Session 620, 8.5 credits/contact hours

Target Audience: Designed for physicians, nephrology fellows, residents, and advanced practitioners.

Course Description: This course is designed to offer the attendee an improved understanding of the unique role of the nephrology intensivist in the acute care hospital. Lectures will cover various aspects of the diagnosis, treatment and outcomes of the ICU patient. Lectures and case presentations on the prevention and management of AKI, fluid and electrolyte challenges, and Renal Replacement Therapies (RRT) will be discussed.

The Basics of CKD/ESRD for the Advanced Practitioner New to Nephrology

Course Directors: Joanne Hindlet, ACNP, BC CNN-NP, and Alison Kaprove MS, PA-C

8:00am – 5:00pm

Session 621, 7.0 credits/contact hours

Target Audience: Designed for advanced practitioners new to nephrology.

Course Description: This course is designed to offer the attendee a broad overview of Chronic Kidney Disease, risk factors prevalence, diagnosis and treatments. Faculty will also look at the role of PAs and NPs in nephrology practice. The afternoon will be dedicated to ESRD, preparation, vascular access, modalities, transplant, Bone Mineral Disorders and anemia management.

Transplant Update: 2019

Course Director: Deirdre Sawinski, MD, FAST

7:30am – 5:30pm

Session 220, 7.0 credits/contact hours

See page 9 for details

Successful Dialysis: Who, What, Where, When and How

Course Directors: Jenny Flythe, MD, MPH, and Jeffrey Perl, MD, SM, FRCP(C)

7:30am – 5:00pm

Session 221, 8.0 credits/contact hours

See page 9 for details

Basics of Vascular Access: The Practical Essentials

Course Directors: Kenneth Abreo, MD, and Vandana Niyar, MD

7:30am – 12:30pm

Session 223, 4.5 credits/contact hours

See page 9 for details

Glomerular Diseases: Updates on Pathogenesis and Treatment

Course Directors: Gerald Appel, MD, FNKF, Fernando Fervenza, MD, PhD, FNKF, and Jonathan Hogan, MD

8:00am – 6:00pm

Session 224, 9.0 credits/contact hours

See page 10 for details

Supportive Care in Nephrology: Teaching the Clinician, Treating the Patient

Course Director: Robert Cohen, MD, FNKF

1:00pm – 6:00pm

Session 225, 4.75 credits/contact hours

See page 10 for details

LUNCH WORKSHOPS

REQUIRED: Separate registration fee of \$50; includes a box lunch and CME credits. Participation is limited to 75 each, so register early.

Thursday, May 9, 12:00pm – 2:00pm

Managing Co-Morbidities in the Hospitalized Patient

Session 630

Chair: Robin Dauterive, MD

Workshop Description: When your patient presents with more than kidney disease; the steps you take to identify respiratory, cardiac, GI and other medical conditions and how to manage them in the acute hospital setting. Case presentations of patients with a variety of illnesses and pre-surgery red flags.

The Long and Perilous Path to the Best Possible Vascular Dialysis Access

Session 230

Chair: Kenneth Abreo, MD

Workshop Description: This workshop will focus on the problems and pitfalls of choosing the right enduring access in the ESRD patient. The talks and discussions will be case-based and practical. Methods to increase home dialysis therapies will be discussed. The role of early planning and prompt intervention with regards to AVFs placement and maturity with the goal of decreasing TDC use will be explored. The emerging role of AVGs in special populations to decrease TDC dependence will be discussed. The prevention and treatment of infectious complications of TDCs will be discussed.

Challenging Issues in Hypertension

Session 232

Chairs: Deirdre Sawinski, MD, FAST, and Jordana Cohen, MD

Workshop Description: There are some hypertensive patients that always keep you on your toes. This workshop deals with four such conditions: pregnancy, obesity, pheochromocytoma, dysautonomia. The newest evidence and optimal approaches to managing these patients will be reviewed.

Electrolytes and Acid-Base

Session 233

Chair: Michael Emmett, MD

Workshop Description: This interactive workshop will consist of presentations of acid-base and electrolyte cases by experts in the field. Attendees will be asked to suggest differential diagnoses, best next steps, final diagnoses, as well as the most appropriate treatment plan.

Saturday, May 11, 12:00pm – 1:30pm

Reproductive Health and Renal Disease

Session 234

Chairs: Deirdre Sawinski, MD, FAST, and Jaya Kala, MD

Workshop Description: In this workshop, experts in the field will review the range reproductive health issues in patients with renal disease. The impact of CKD, ESRD and transplantation on fertility and pregnancy outcomes will be discussed. Other topics include: assisted reproductive technologies, contraception and immunosuppression management for the pregnant patient.

Salty Propositions: Management of Hyponatremia in 2019

Session 235

Chair: Jerry Yee, MD, FNKF

Workshop Description: Morbid complications of hyponatremia are well-described. However, when confronted by hyponatremia in more extreme circumstances, appropriate treatment requires extreme thinking, with a deep appreciation of pathophysiological principles of water and sodium metabolism. Attend this state-of-the-art workshop to reinvigorate your knowledge regarding hyponatremia and quantitative, modern day therapies for major, modern day problems.

Teach Each Other Well: Improving Communication Between Providers and Patients/Family Members

Session 236

Chair: Robert Cohen, MD, FNKF

Workshop Description: This interactive, inter-professional workshop will teach communication tools for challenging conversations between nephrology providers and patients and family members regarding end-stage kidney disease decisions. Cases will be discussed to highlight skills that can be used for these difficult discussions.

ADVANCED PRACTITIONER PROGRAM

Wednesday, May 8

TIME	SESSION #	SESSION	NOTES
7:30am – 5:30pm	220	Transplant Update: 2019	●
7:30am – 5:00pm	221	Successful Dialysis: Who, What, Where, When and How	●
7:30am – 12:30pm	223	Basics of Vascular Access: The Practical Essentials	●
7:30am – 5:15pm	620	Updates in Critical Care Nephrology	●
8:00am – 5:00pm	621	The Basics of CKD/ESRD for the Advanced Practitioner New to Nephrology	●
1:00pm – 6:00pm	225	Supportive Care in Nephrology: Teaching the Clinician, Treating the Patient	●
6:30pm – 8:00pm	101	Healthcare Professionals Welcome Reception	

Thursday, May 9

TIME	SESSION #	SESSION	NOTES
8:00am – 9:30am	660	Diabetes: Treatment and CKD	↔
8:00am – 9:30am	661	Update in Transplantation	
8:00am – 9:30am	261	Back to the Future: KDOQI Guidelines and Novel Innovations in Vascular Access for Hemodialysis	
9:30am – 10:00am		Break	
10:00am – 11:30am	662	Managing Treatment Issues with Anemia and Bloodborne Diseases	
10:00am – 11:30am	663	Pulmonary Updates	
10:00am – 11:30am	362	Status and Advances in the Development of the Artificial Wearable Kidney	
11:30am – 12:00pm		Break	
12:00pm – 2:00pm	630	Workshop: Managing Co-Morbidities in the Hospitalized Patients	●
12:00pm – 2:00pm	230	Workshop: The Long and Perilous Path to the Best Possible Vascular Dialysis Access	●
12:00pm – 2:00pm	232	Workshop: Challenging Issues in Hypertension	●
12:00pm – 2:00pm	233	Workshop: Electrolytes and Acid-Base	●
2:00pm – 2:15pm		Break	
2:15pm – 4:00pm	266	Keynote Address and Shaul G. Massry Distinguished Lecture	
4:00pm – 4:15pm		Break	
4:15pm – 5:45pm	664	Flowing Waters: Urinalysis and Diuretic Therapy	
4:15pm – 5:45pm	267	KDOQI Guidelines Update	
4:15pm – 5:45pm	268	Use of Peritoneal Dialysis in Non-Renal Organ End Stage	
4:15pm – 5:45pm	564	Joel D. Kopple Award Presentation: Food and Culture: We Are What We Eat	
6:00pm – 7:30pm		Opening Ceremonies and Reception in the Exhibit Hall – Visit Posters/Exhibits	

Friday, May 10

TIME	SESSION #	SESSION	NOTES
7:00am – 8:30am		Continental Breakfast in the Exhibit Hall – Visit Posters/Exhibits	
8:15am – 9:45am	665	Finding Balance in Treating Cardio-Renal and CHF in CKD	
8:15am – 9:45am	271	Resistant Hypertension	
8:15am – 9:45am	565	Motivational Interviewing: Empowering Patients to Make Meaningful Change	
9:45am – 10:15am		Break	
10:15am – 11:45am	666	"I've got a Bone to Pick with You..." Update with the Beans and the Bones Discussion of Ca/Phos/Calciphylaxis	
10:15am – 11:45am	667	Lytes to Acid-Base	
10:15am – 11:45am	668	Liver and Stones and the Renal Impact of Each	
11:45am – 12:00pm		Break	

Friday, May 10 (Continued)

TIME	SESSION #	SESSION	NOTES
12:00pm – 1:45pm	669	Council of Advanced Practitioners (CAP) Networking Luncheon—All are Welcome	
1:45pm – 2:00pm		Break	
2:00pm – 3:30pm	670	Updates in Money Matters and Practice Policy	
2:00pm – 3:30pm	570	Bariatric Surgery and Obesity in CKD and Transplantation	⇔
2:00pm – 3:30pm	276	Hypertension Guidelines: Commentary from KDOQI	
3:30pm – 4:00pm		Break	
4:00pm – 5:30pm	671	Alternative Nutrition: Fad Diets and Herbals	
4:00pm – 5:30pm	672	Nuts and Bolts of Dialysis Rounds	
4:00pm – 5:30pm	279	What's "Old" Is New Again: Incorporating Geriatric Assessments Across the Kidney Disease Spectrum	
4:00pm – 5:30pm	295	Never Say Never: Looking at Potential Transplant Candidates Differently	
5:30pm – 7:00pm		Networking Reception in the Exhibit Hall – Visit Posters/Exhibits	

Saturday, May 11

TIME	SESSION #	SESSION	NOTES
7:00am – 10:00am		Break in the Exhibit Hall (Breakfast Served 7:00am – 8:30am) – Visit Posters/Exhibits	
8:45am – 9:45am	281	Lazarus Lecture: Peritoneal Dialysis – Past and Present	
9:45am – 10:00am		Break	
10:00am – 11:30am	673	Renal Pathology	
10:00am – 11:30am	574	Interdisciplinary Team Approach to Fluid Management and Ultra Filtration Rate	⇔
11:30am – 12:00pm		Break	
12:00pm – 1:30pm	234	Workshop: Reproductive Health and Renal Disease	●
12:00pm – 1:30pm	235	Workshop: Salty Propositions: Management of Hyponatremia in 2019	●
12:00pm – 1:30pm	236	Workshop: Teach Each Other Well: Improving Communication Between Providers and Patients/Family Members	●
1:30pm – 2:00pm		Break	
2:00pm – 3:30pm	674	The Ins and Outs of Home Dialysis	
2:00pm – 3:30pm	675	Renal Pharmacology	
2:00pm – 3:30pm	285	We Need to Talk: Depression and Anxiety in Dialysis	⇔
3:30pm – 4:00pm		Break	
4:00pm – 5:30pm	676	Rising to the Challenge of Resistant Hypertension and Hypo/Hypernatremia	
4:00pm – 5:30pm	677	Beauty is More Than Skin Deep: Dermatologic Dilemmas and Skin Cancer Recognition	
4:00pm – 5:30pm	288	How Can We Deliver Palliative Care to Our Patients: A Practical, Team-Based Approach	⇔
4:00pm – 5:30pm	289	Nephrology Without Borders	

Sunday, May 12

TIME	SESSION #	SESSION	NOTES
8:00am – 9:30am	292	Lifestyle Interventions for Clinicians to Optimize Patient Outcomes	⇔
9:30am – 10:00am		Break	
10:00am – 11:30am	582	Bringing It to The Streets: Opportunities to Make a Difference in The Community	⇔
10:00am – 11:30am	293	Serum Phosphate as a Therapeutic Goal in Dialysis Patients	
11:30am		Meeting Adjourns	

● Separate Registration and/or Fee Required ⇔ Interprofessional Session

Visit nkfclinicalmeetings.org for additional program details and up-to-date information on SCM19.

NEPHROLOGY NURSE AND TECHNICIAN PROGRAM

PLANNING COMMITTEE

Marianne Neumann, RN, CNN, FNKF

Program Chair
Albany Regional Kidney Center
Rensselaer, NY

Mary Lincoln, RN, BSN, MHA

Program Co-Chair
Mercy Medical Center
Clinton, IA

Carolyn Atkins, BS, RN, CCTC, FNKF

Dallas, TX

Mary Greensides, CCHT-A

University of Wisconsin
Rockford, IL

Jo Ann Otts, DNP, RN, NEA-BC, FNKF

University of South Alabama
Fairhope, AL

Joseph Sala, BSc, ED, CHT, CWR, CWS

Mount Sinai Kidney Center
New York, NY

Heather C. Weirich, BSN, RN, CNN

Independent Dialysis Foundation
Baltimore, MD

Rebecca White, CCHT

Tri-State Dialysis
Dubuque, IA

GOAL

To improve patient outcomes by enhancing nephrology nurses' and technicians' knowledge base and skills that will have a direct impact on clinical practice in a variety of settings.

CONTINUING EDUCATION INFORMATION



The National Kidney Foundation is accredited by the American Nurses Credentialing Center (ANCC), the Accreditation Council for Pharmacy Education (ACPE), and the Accreditation Council for Continuing Medical Education (ACCME), to provide continuing education for the healthcare team.

Awarded 24.25* contact hours of continuing nursing education.

**Note: Acquiring 24.25 contact hours requires continuous participation from Thursday morning through Sunday morning. Many participants opt for periodic breaks, which make their credit hours somewhat less. Additional credits are provided for courses requiring separate registration.*

**As of October 2018*

PRE-CONFERENCE COURSES

Wednesday, May 8

REQUIRED: Separate registration fee (see below for pricing). Includes syllabus, light breakfast and/or box lunch, and CE contact hours. Participation is limited, so register early.

PRICING

Half-Day Courses: \$60 NKF Members, \$75 Non-Members

Full-Day Courses: \$200 NKF Members, \$225 Non-Members

Transplant Update: 2019

Course Director: Deirdre Sawinski, MD, FAST

7:30am – 5:30pm

Session 220, 7.0 contact hours

See page 9 for details

Successful Dialysis: Who, What, Where, When and How

Course Directors: Jenny Flythe, MD, MPH, and Jeffrey

Perl, MD, SM, FRCP(C)

7:30am – 5:00pm

Session 221, 8.0 contact hours

See page 9 for details

Basics of Vascular Access: The Practical Essentials

Course Directors: Kenneth Abreo, MD, and Vandana Niyyar, MD
7:30am – 12:30pm
Session 223, 4.0 contact hours
See page 9 for details

Updates in Critical Care Nephrology

Course Directors: Laurie Benton, PhD, MPAS, PA-C, RN, FNKF and Ron Wald, MD
7:30am – 5:15pm
Session 620, 8.5 contact hours
See page 17 for details

The Basics of CKD/ESRD for the Advanced Practitioner New to Nephrology

Course Directors: Joanne Hindlet, ACNP, BC CNN-NP, and Alison Kaprove MS, PA-C
8:00am – 5:00pm
Session 621, 7.0 contact hours
See page 18 for details

Supportive Care in Nephrology: Teaching the Clinician, Treating the Patient

Course Director: Robert Cohen, MD, FNKF
1:00pm – 6:00pm
Session 225, 4.75 contact hours
See page 10 for details

Elephant in the Room: Violence in the Dialysis Center

Course Directors: Jane Kwatcher, MSW, LCSW and Matt Stricherz, EdD
1:00pm – 5:15pm
Session 422, 4.0 contact hours
See page 33 for details

LUNCH WORKSHOPS

REQUIRED: Separate registration fee of \$50; includes box lunch and CME credits. Participation is limited to 75 each, so register early.

Thursday, May 9, 12:00pm – 2:00pm

The Long and Perilous Path to the Best Possible Vascular Dialysis Access

Session 230

Chair: Kenneth Abreo, MD

Workshop Description: This workshop will focus on the problems and pitfalls of choosing the right enduring access in the ESRD patient. The talks and discussions will be case-based and practical. Methods to increase home dialysis therapies will be discussed. The role of early planning and prompt intervention with regards to AVFs placement and maturity with the goal of decreasing TDC use will be explored. The emerging role of AVGs in special populations to decrease TDC dependence will be discussed. The prevention and treatment of infectious complications of TDCs will be discussed.

Saturday, May 11, 12:00pm – 1:30pm

Teach Each Other Well: Improving Communication Between Providers and Patients/Family Members

Session 236

Chair: Robert Cohen, MD, FNKF

Workshop Description: This interactive, inter-professional workshop will teach communication tools for challenging conversations between nephrology providers and patients and family members regarding end-stage kidney disease decisions. Cases will be discussed to highlight skills that can be used for these difficult discussions.

NEPHROLOGY NURSE PROGRAM

Wednesday, May 8

TIME	SESSION #	SESSION	NOTES
7:30am – 5:30pm	220	Transplant Update: 2019	•
7:30am – 5:00pm	221	Successful Dialysis: Who, What, Where, When and How	•
7:30am – 12:30pm	223	Basics of Vascular Access: The Practical Essentials	•
7:30am – 5:15pm	620	Updates in Critical Care Nephrology	•
8:00am – 5:00pm	621	The Basics of CKD/ESRD for the Advanced Practitioner New to Nephrology	•
1:00pm – 5:15pm	422	Elephant in the Room: Violence in the Dialysis Center	•
1:00pm – 6:00pm	225	Supportive Care in Nephrology: Teaching the Clinician, Treating the Patient	•
6:30pm – 8:00pm	101	Healthcare Professionals Welcome Reception	

Thursday, May 9

TIME	SESSION #	SESSION	NOTES
8:00am – 9:30am	360	Developing a Vascular Access Team: A Panel Discussion	
8:00am – 9:30am	660	Diabetes: Treatment and CKD	↔
8:00am – 9:30am	261	Back to the Future: KDOQI Guidelines and Novel Innovations in Vascular Access for Hemodialysis	
9:30am – 10:00am		Break	
10:00am – 11:30am	361	“Let’s Get Our Patients Home” – A Review of Modality Options	
10:00am – 11:30am	362	Status and Advances in the Development of the Artificial Wearable Kidney	
10:00am – 11:30am	561	Battling Burnout in Practitioners and Patients	
11:30am – 12:00pm		Break	
12:00pm – 2:00pm	230	Workshop: The Long and Perilous Path to the Best Possible Vascular Dialysis Access	•
2:00pm – 2:15pm		Break	
2:15pm – 4:00pm	266	Keynote Address and Shaul G. Massry Distinguished Lecture	
4:00pm – 4:15pm		Break	
4:15pm – 5:45pm	363	Increasing Patient Family Engagement	
4:15pm – 5:45pm	267	KDOQI Guidelines Update	
4:15pm – 5:45pm	268	Use of Peritoneal Dialysis in Non-Renal Organ End Stage	
6:00pm – 7:30pm		Opening Ceremonies and Reception in the Exhibit Hall – Visit Posters/Exhibits	

Friday, May 10

TIME	SESSION #	SESSION	NOTES
7:00am – 8:30am		Continental Breakfast in the Exhibit Hall – Visit Posters/Exhibits	
8:15am – 9:45am	364	Dialysis Accreditation: Improving Access to Care	
8:15am – 9:45am	365	Advance Care Planning: A Renal Pilot Project	
8:15am – 9:45am	565	Motivational Interviewing: Empowering Patients to Make Meaningful Change	
9:45am – 10:15am		Break	
10:15am – 11:45am	366	Emergency Preparedness	
10:15am – 11:45am	367	Collective Competence in Healthcare: Communication, Collaboration, and Emotional Intelligence	
10:15am – 11:45am	273	Acute Renal Replacement Therapy: Best Practices and Special Circumstances	
10:15am – 11:45am	274	Increasing Home Dialysis: Focus on Attrition and Transition	
11:45am – 12:00pm		Break	
12:00pm – 1:45pm	368	Council on Nephrology Nurses and Technicians (CNNT) Luncheon - All are Welcome!	
1:45pm – 2:00pm		Break	
2:00pm – 3:30pm	369	Survey Readiness: Focus on Patient Safety in the Acute and Chronic Setting	

Friday, May 10 (Continued)

TIME	SESSION #	SESSION	NOTES
2:00pm – 3:30pm	570	Bariatric Surgery and Obesity	⇔
2:00pm – 3:30pm	276	Hypertension Guidelines: Commentary from KDOQI	
3:30pm – 4:00pm		Break	
4:00pm – 5:30pm	370	Disruptive Innovation in ESRD: Linking Quality to Reimbursement	
4:00pm – 5:30pm	472	Laughter Therapy in Dialysis: Exercise, Activity and Wellness	
4:00pm – 5:30pm	295	Never Say Never: Looking at Potential Transplant Candidates Differently	
5:30pm – 7:00pm		Networking Reception in the Exhibit Hall – Visit Posters/Exhibits	

Saturday, May 11

TIME	SESSION #	SESSION	NOTES
7:00am – 10:00am		Break in the Exhibit Hall (Breakfast Served 7:00am – 8:30am) – Visit Posters/Exhibits	
8:45am – 9:45am	281	Lazarus Lecture: Peritoneal Dialysis – Past and Present	
9:45am – 10:00am		Break	
10:00am – 11:30am	574	Interdisciplinary Team Approach to Fluid Management and Ultrafiltration Rates	⇔
11:30am – 12:00pm		Break	
12:00pm – 1:00pm	371	Improving the Overall Perception of Safety in the Hemodialysis Unit	
12:00pm – 1:00pm	372	Personal and Professional Accountability Within the Dialysis Unit	
12:00pm – 1:30pm	236	Workshop: Teach Each Other Well: Improving Communication Between Providers and Patients/Family Members	•
1:30pm – 2:00pm		Break	
2:00pm – 3:30pm	373	Health Literacy	
2:00pm – 3:30pm	285	We Need to Talk: Depression and Anxiety in Dialysis	⇔
2:00pm – 3:30pm	286	Arrhythmias and Sudden Death in Dialysis Patients: Old Problem, New Options	
2:00pm – 3:30pm	287	Social Media and Medicine: Beginning the Second Era	
3:30pm – 4:00pm		Break	
4:00pm – 5:30pm	374	Organ Donation: The Changes Over the Years	
4:00pm – 5:30pm	480	“Four Mantras” For True Presence with Our Patients	
4:00pm – 5:30pm	288	How Can We Deliver Palliative Care to Our Patients: A Practical, Team-Based Approach	⇔

Sunday, May 12

TIME	SESSION #	SESSION	NOTES
8:00am – 9:30am	292	Lifestyle Interventions for Clinicians to Optimize Patient Outcomes	⇔
9:30am – 10:00am		Break	
10:00am – 11:30am	582	Bringing It to The Streets: Opportunities to Make a Difference in The Community	⇔
11:30am		Meeting Adjourns	

- Separate Registration and/or Fee Required
- ⇔ Interprofessional Session

Visit nkfclinicalmeetings.org for additional program details and up-to-date information on SCM19.

TECHNICIAN PROGRAM

Wednesday, May 8

TIME	SESSION #	SESSION	NOTES
7:30am – 5:30pm	220	Transplant Update: 2019	•
7:30am – 5:00pm	221	Successful Dialysis: Who, What, Where, When and How	•
7:30am – 12:30pm	223	Basics of Vascular Access: The Practical Essentials	•
1:00pm – 5:15pm	422	Elephant in the Room: Violence in the Dialysis Center	•
6:30pm – 8:00pm	101	Healthcare Professionals Welcome Reception	

Thursday, May 9

TIME	SESSION #	SESSION	NOTES
8:00am – 9:30am	660	Diabetes: Treatment and CKD	⇔
8:00am – 9:30am	360	Developing a Vascular Access Team: A Panel Discussion	⇔
9:30am – 10:00am		Break	
10:00am – 11:30am	361	“Let’s Get Our Patients Home” – A Review of Modality Options	⇔
10:00am – 11:30am	561	Battling Burnout in Practitioners and Patients	
11:30am – 12:00pm		Break	
12:00pm – 2:00pm	230	Workshop: The Long and Perilous Path to the Best Possible Vascular Dialysis Access	• ⇔
2:00pm – 2:15pm		Break	
2:15pm – 4:00pm	266	Keynote Address and Shaul G. Massry Distinguished Lecture	
4:00pm – 4:15pm		Break	
4:15pm – 5:45pm	363	Increasing Patient Family Engagement	
4:15pm – 5:45pm	267	KDOQI Guideline Update	
6:00pm – 7:30pm		Opening Ceremonies and Reception in the Exhibit Hall – Visit Posters/Exhibits	

Friday, May 10

TIME	SESSION #	SESSION	NOTES
7:00am – 8:30am		Continental Breakfast in the Exhibit Hall – Visit Posters/Exhibits	
8:15am – 9:45am	364	Dialysis Accreditation: Improving Access to Care	⇔
8:15am – 9:45am	565	Motivational Interviewing: Empowering Patients to Make Meaningful Change	
9:45am – 10:15am		Break	
10:15am – 11:45am	366	Emergency Preparedness	⇔
10:15am – 11:45am	367	Collective Competency in Healthcare: Communication, Collaboration, and Emotional Intelligence	⇔
11:45am – 12:00pm		Break	
12:00pm – 1:45pm	368	Council on Nephrology Nurses and Technicians (CNNT) Luncheon - All are Welcome!	
1:45pm – 2:00pm		Break	
2:00pm – 3:30pm	369	Survey Readiness: Focus on Patient Safety	⇔
2:00pm – 3:30pm	570	Bariatric Surgery and Obesity in CKD and Transplantation	⇔
3:30pm – 4:00pm		Break	
4:00pm – 5:30pm	760	Machine Alarms: What's all the Noise?	○
4:00pm – 5:30pm	472	Laughter Therapy in Dialysis: Exercise, Activity and Wellness	
4:00pm – 5:30pm	370	Disruptive Innovation in ESRD: Linking Quality to Reimbursement	⇔
4:00pm – 5:30pm	295	Never Say Never: Looking at Potential Transplant Candidates Differently	
5:30pm – 7:00pm		Networking Reception in the Exhibit Hall – Visit Posters/Exhibits	

Saturday, May 11

TIME	SESSION #	SESSION	NOTES
7:00am – 10:00am		Break in the Exhibit Hall (Breakfast Served 7:00am – 8:30am) – Visit Posters/Exhibits	
8:45am – 9:45am	281	Lazarus Lecture: Peritoneal Dialysis--- Past and Present	
9:45am – 10:00am		Break	
10:00am – 11:30am	761	Technical Survey Preparedness	○
10:00am – 11:30am	574	Interdisciplinary Team Approach to Fluid Management and Ultra Filtration Rate	⇔
11:30am – 12:00pm		Break	
12:00pm – 1:00pm	762	Evolution of Standards or The Science of Dialysis	○
12:00pm – 1:00pm	371	Improving the Overall Perception of Safety in the Hemodialysis Unit	
12:00pm – 1:00pm	372	Personal and Professional Accountability Within the Dialysis Unit	⌘
12:00pm – 1:30pm	236	Workshop: Teach Each Other Well: Improving Communication Between Providers and Patients/Family Members	•
1:30pm – 2:00pm		Break	
2:00pm – 3:30pm	763	Water 101	○
2:00pm – 3:30pm	285	We Need to Talk: Depression and Anxiety in Dialysis	⇔
2:00pm – 3:30pm	287	Social Media and Medicine: Beginning the Second Era	
2:00pm – 3:30pm	373	Health Literacy	
3:30pm – 4:00pm		Break	
4:00pm – 5:30pm	764	Professionalism and the Role of the Technician	○
4:00pm – 5:30pm	480	"Four Mantras" For True Presence with Our Patients	
4:00pm – 5:30pm	288	How Can We Deliver Palliative Care to Our Patients: A Practical, Team-Based Approach	⇔

Sunday, May 12

TIME	SESSION #	SESSION	NOTES
8:00am – 9:30am	292	Lifestyle Interventions for Clinicians to Optimize Patient Outcomes	⇔
9:30am – 10:00am		Break	
10:00am – 11:30am	582	Bringing It to The Streets: Opportunities to Make a Difference in The Community	⇔
11:30am		Meeting Adjourns	

- Separate Registration and/or Fee Required
- ⇔ Interprofessional Session
- Biomedical Session
- ⌘ Clinical Session

Visit nkfclinicalmeetings.org for additional program details and up-to-date information on SCM19.

RENAL AND CLINICAL DIETITIAN PROGRAM

PLANNING COMMITTEE

Beth Morlang, RD, LD, FNKF
Program Chair
Central Florida Kidney Center
Palm Bay, FL

Christine Barrett, MS, RDN, LD, FNKF
Program Co-Chair
DaVita Leavenworth
Leavenworth, KS

Marie Becker, MS, RD, LDN, FNKF
Central Orlando Dialysis
Orlando, FL

Wai Yin Ho, MEd, MS, RDN
Pentec Health
Summerville, SC

Meredith Marinaro, MS, RD, FNKF
Keryx Biopharmaceuticals
Farmington, CT

Kimberly Miyamoto, RD
US Renal Care
Torrance, CA

Erika Spann, RD
U.S. Renal Care Dialysis
Lomita, CA

CONTINUING EDUCATION INFORMATION



The National Kidney Foundation is a Continuing Professional Education (CPE) Accredited Provider with the Commission on Dietetic Registration (CDR). CDR Credentialed Practitioners will receive 24.25* Continuing Professional Education Units (CPEUs) for completion of this activity/material.

**Note: Acquiring 24.25 CPEUs requires continuous participation from Thursday morning through Sunday morning. Many participants opt for periodic breaks, which make their CPEUs somewhat less. Additional CPEUs are provided for courses requiring separate registration.*

**As of October 2018*

PRE-CONFERENCE COURSES

Wednesday, May 8

REQUIRED: Separate registration fee of \$150 for NKF Members, \$175 for Non-Members; includes light breakfast, boxed lunch, and CPEUs. Participation is limited, so register early.

Foundations of Nutrition Practice for Kidney Disease (Strategies I)

Course Director: Pamela Kent, MS, RD, CDE, LD
7:30am – 5:00pm
Session 520, 7.75 CPEUs

Target Audience: Designed for registered dietitian nutritionists.

Course Description: This course will focus on learning the essentials of renal nutrition throughout the disease continuum. Taught by expert practicing clinicians this interactive workshop uses informal lectures and case study-based sessions to help the attendee gain the knowledge and skills to better support CKD patients. Sessions will include a review of renal physiology, strategies to

delay the progression of CKD, metabolic complications of CKD, pharmacologic and nutritional management of renal replacement therapies.

Advanced Practice in Renal Nutrition: Update 2019 (Strategies II)

Course Director: Mary Sundell, MLAS, RD, CSR, FNKF
8:00am – 4:30pm
Session 521, 7.25 CPEUs

Target Audience: Designed for advanced practice renal dietitians.

Course Description: This course is designed to teach the Advanced Practice Renal Dietitian how to identify complex clinical and management issues, foster critical thinking to identify best practice strategies, and utilize interactive learning including case studies that will result in changes in practice, to improve nephrology care.

WORKSHOPS

Friday, May 10, 10:15am – 11:45am

REQUIRED: Separate registration required. This workshop is complimentary, but participation is limited, so register early.

Nutrition Poster Tour

Session 530

Workshop Description: Do you love the poster sessions, but you're not sure what to look for in research and outcomes? Tour the posters in this research session with a colleague who has a background in both renal nutrition and research to better understand what is new, what is accurate, and what needs further study.

Saturday, May 11, 12:00pm – 1:30pm

REQUIRED: Separate registration fee of \$50; includes box lunch and CPEUs. Participation is limited to 75 each, so register early.

Teach Each Other Well: Improving Communication Between Providers and Patients/Family Members

Session 236

Chair: Robert Cohen, MD, FNKF

Workshop Description: This interactive, inter-professional workshop will teach communication tools for challenging conversations between nephrology providers and patients and family members regarding end-stage kidney disease decisions. Cases will be discussed to highlight skills that can be used for these difficult discussions.

RENAL AND CLINICAL DIETITIAN PROGRAM

Wednesday, May 8

TIME	SESSION #	SESSION	NOTES
7:30am – 5:00pm	520	Foundations of Nutrition Practice for Kidney Disease (Strategies I)	•
8:00am – 4:30pm	521	Advanced Practice in Renal Nutrition: Update 2017 (Strategies II)	•
6:30pm – 8:00pm	101	Healthcare Professionals Welcome Reception	

Thursday, May 9

TIME	SESSION #	SESSION	NOTES
8:00am – 9:30am	560	KDOQI Nutrition and MBD Updates	
8:00am – 9:30am	660	Diabete: Treatment and CKD	↔
8:00am – 9:30am	260	A Growing Problem: Obesity in CKD and Transplantation	
9:30am – 10:00am		Break	
10:00am – 11:30am	561	Battling Burnout in Practitioners and Patients	
10:00am – 11:30am	562	Potassium: What to Do Across CKD 1-5	
10:00am – 11:30am	362	Status and Advances in the Development of the Artificial Wearable Kidney	
11:30am – 12:00pm		Break	
12:00pm – 2:00pm	563	Council on Renal Nutrition (CRN) Networking Luncheon Urine Inspiration	
2:00pm – 2:15pm		Break	
2:15pm – 4:00pm	266	Keynote Address and Shaul G. Massry Distinguished Lecture	
4:00pm – 4:15pm		Break	
4:15pm – 5:45pm	564	Joel D. Kopple Award Presentation – Food and Culture: We Are What We Eat	
4:15pm – 5:45pm	267	KDOQI Guidelines Update	
6:00pm – 7:30pm		Opening Ceremonies and Reception in the Exhibit Hall – Visit Posters/Exhibits	

Friday, May 10

TIME	SESSION #	SESSION	NOTES
7:00am – 8:30am		Continental Breakfast in the Exhibit Hall – Visit Posters/Exhibits	
8:15am – 9:45am	565	Motivational Interviewing: Empowering Patients to Make Meaningful Change	
8:15am – 9:45am	566	Bone Management in Transplantation	
9:45am – 10:15am		Break	
10:15am – 11:45am	567	The Renal Dietitian's Role in Calcimimetics – How is it Working?	
10:15am – 11:45pm	530	Nutrition Poster Tour	•
10:15am – 11:45pm	569	Medical Nutrition Therapy for CKD: Barriers and Solutions	
12:00pm – 1:45pm		Break in the Exhibit Hall (Lunch Served 12:00pm – 1:30pm) – Visit Posters/Exhibits	
2:00pm – 3:30pm	570	Bariatric Surgery and Obesity in CKD and Transplantation	↔
2:00pm – 3:30pm	571	Intro to ESCOs: What's Happening to Us?	
2:00pm – 3:30pm	469	Say "NO" to Behavior Police	
3:30pm – 4:00pm		Break	
4:00pm – 5:30pm	572	PD Managing Nutrient Losses	
4:00pm – 5:30pm	573	K-alciphylaxis (Vitamin K and Dialysis)	
4:00pm – 5:30pm	671	Alternative Nutrition: Fad Diets and Herbals	
5:30pm – 7:00pm		Networking Reception in the Exhibit Hall – Visit Posters/Exhibits	

Saturday, May 11

TIME	SESSION #	SESSION	NOTES
7:00am – 10:00am		Break in the Exhibit Hall (Breakfast Served 7:00am – 8:30am) – Visit Posters/Exhibits	
8:45am – 9:45am	281	Lazarus Lecture: Peritoneal Dialysis – Past and Present	
9:45am – 10:00am		Break	
10:00am – 11:30am	574	Interdisciplinary Team Approach to Fluid Management and Ultrafiltration Rates	↔
10:00am – 11:30am	575	Use of Probiotics to Slow Down CKD	
11:30am – 12:00pm		Break	
12:00pm – 1:00pm	576	Technology and Renal Dietitian Practice	
12:00pm – 1:30pm	236	Workshop: Teach Each Other Well: Improving Communication Between Providers and Patients/Family Members	•
1:30pm – 2:00pm		Break	
2:00pm – 3:30pm	577	Branching Out: The Role of the Renal Dietitian Outside of the Unit	
2:00pm – 3:30pm	578	The Role of Dietary Advanced Glycation End Products (AGEs) in CKD	
2:00pm – 3:30pm	478	Managing Fluid Gains in Psychosocially Complex Pediatric Patients	
3:30pm – 4:00pm		Break	
4:00pm – 5:30pm	580	Nutrition Focused Physical Exam	
4:00pm – 5:30pm	581	Adequacy of Plant Based Proteins in Chronic Kidney Disease	

Sunday, May 12

TIME	SESSION #	SESSION	NOTES
8:00am – 9:30am	292	Lifestyle Interventions for Clinicians to Optimize Patient Outcomes	⇔
9:30am – 10:00am		Break	
10:00am – 11:30am	582	Bringing it to The Streets: Opportunities to Make a Difference in The Community	
10:00am – 11:30am	293	Serum Phosphate as a Therapeutic Goal in Dialysis Patients	
12:00pm		Meeting Adjourns	

- Separate Registration and/or Fee Required
- ⇔ Interprofessional Session

Visit nkfclinicalmeetings.org for additional program details and up-to-date information on SCM19.

NEPHROLOGY SOCIAL WORKER PROGRAM

PROGRAM COMMITTEE

Jennifer McClain, MSW, LSW, NSW-C

Program Chair

Fresenius Medical Care – Fire Mesa Dialysis
Las Vegas, NV

Kevin Ceckowski, MSW, LICSW, FNKF

Program Co-Chair

Walter Reed National Military Medical Center
Bethesda, MD

Nina Abiera, LCSW, MPA

US Renal Care
Los Angeles, CA

Kristen M. Fischer, MSW, LCSW, NSW-C

Sanford Transplant Center
Fargo, ND

Elizabeth Jones, MSW, LCSW, FNKF

DaVita Sterling
Sterling, VA

Dorothy Muench, MSW, LCSW, NSW-C, FNKF

Continuing Education Chair

Wake Forest Baptist Medical Center
Winston Salem, NC

Jessica A. Phipps, MSW, LSW, FNKF

Fresenius Kidney Care
Plainfield, NJ

Elanderia Rowe, LMSW-IPR, NSW-C, FNKF

DaVita Renal Center of Carrollton
Carrollton, TX

Kelli Scott, LMSW

Children's Mercy Hospital
Kansas City, MO

CONTINUING EDUCATION INFORMATION

The National Kidney Foundation Council of Nephrology Social Workers, provider #1014, is approved as a provider for social work continuing education by the Association of Social Work Boards (ASWB) www.aswb.org, phone: 1.800.225.6880, through the Approved Continuing Education (ACE) program. The National Kidney Foundation Council of Nephrology Social Workers maintains responsibility for the program.

National Kidney Foundation SW CPE is recognized by the New York State Education Department's State Board for Social Work as an approved provider of continuing education for licensed social workers #0064.

Social Workers will receive 24.25* continuing education clock hours for participating in this activity.

Conference registrants are responsible for making sure their state accepts the ASWB ACE provider as sufficient for CEUs, or if they need to do anything additional to independently receive state CEUs.

**Note: Acquiring 24.25 continuing education clock hours requires continuous participation from Thursday morning through Sunday morning. Many participants opt for periodic breaks, which make their continuing education clock hours somewhat less. Additional continuing education clock hours are provided for courses requiring separate registration.*

**As of October 2018*

PRE-CONFERENCE COURSES

Wednesday, May 8

REQUIRED: Separate registration fee (see below for pricing). Includes syllabus, light breakfast and/or box lunch, and continuing education clock hours. Participation is limited, so register early.

PRICING:

Half-Day Courses: \$60 NKF Members, \$75 Non-Members

Full-Day Courses: \$200 NKF Members, \$225 Non-Members

New Nephrology Social Workers: Tools, Techniques, and Strategies for a Successful and Effective Practice

Course Directors: Vernon Silva, LCSW, NSW-C, and

Nina Abiera, ASW, MSW, MPA

8:00am – 12:15pm

Session 420, 4.0 clock hours

Target Audience: Designed for new and seasoned nephrology social workers, who are seeking best practices and organizational methods, as well as candidates for NSW-C Certification.

Course Description: This course was developed to offer attendees an extensive review of specific best practices as they relate to dialysis social work services. The multiple

tips and takeaways will: hone participants' clinical skills, enhance application of techniques for interventions, and broaden their documentation and resource toolbox for the purpose of implementing strategies in a fast-paced, culturally diverse treatment setting. Focus will be on efficient and effective methods for clinical case management (assessment, care planning, followup) that maintain high professional and ethical standards.

Trauma Informed Care

Course Directors: Martin Reinsel, MA, LHMC and Louise Kato, LICSW

8:00am – 12:15pm

Session 421, 3.5 clock hours

Target Audience: Designed for nephrology social workers.

Course Description: This course is designed to offer the attendee an understanding of the effects of trauma and neurobiology, principles of trauma-informed care, and trauma-informed care techniques for de-escalation and improved patient/staff safety.

The Elephant in the Room: Violence in the Dialysis Center

Course Directors: Jane Kwatcher, MSW, LCSW, Matt Stricherz, EdD

1:00pm – 5:15pm

Session 422, 4.0 clock hours

Target Audience: Designed for nephrology social workers, nurses and dialysis technicians.

Course Description: Why are we even talking about violence in the dialysis setting? Does violence even really happen in dialysis? YES! We will discuss real events that have transpired over the last few years in dialysis settings and many more events that go unreported. The threat is real and rarely, if ever, addressed. Violent incidents occur at all hours, and all staff should be trained to manage the situations...this is not something just the social worker should address. Violence and perceived threats must be addressed immediately, with the protection of human life being the goal for all involved.

Living and Working with Chronic Kidney Disease: Research, Interventions and Resources for Employment and Quality of Life

Course Directors: Elizabeth Jones, MSW, LCSW, FNKF, and Deborah Evans, MSW

1:00pm – 5:15pm

Session 423, 4.0 clock hours

Target Audience: Designed for nephrology social workers.

Course Description: Presenters will discuss why it is important for social workers to address this issue with ESRD patients, and will share some of their own research on the relationship between employment and transplant. Participants will discover ways to advocate more effectively for their patients' vocational needs. Case presentations will be discussed in challenging work scenarios. There will also be patients who will discuss their own experiences navigating CKD and working.

WORKSHOPS

Friday, May 10, 4:00pm – 5:30pm

REQUIRED: Separate registration required. This workshop is complimentary, but participation is limited, so register early.

Guided Tour of the Exhibit Hall Research Posters Session 430

Presenters: Teri Browne, PhD, MSW, LSW, and Joseph Merighi, PhD, MSW

Workshop Description: An experiential, hand-on tour of abstracts featuring psychosocial content. What makes for a good poster? How do you identify key findings? Veteran instructors will help participants hone skills in assessing and digesting (and building!) posters.

Saturday, May 11, 12:00pm – 1:30pm

REQUIRED: Separate registration fee of \$50; includes box lunch and CME credits. Participation is limited to 75 each, so register early.

Teach Each Other Well: Improving Communication Between Providers and Patients/ Family Members

Session 236

Chair: Robert Cohen, MD, FNKF

Workshop Description: This interactive, inter-professional workshop will teach communication tools for challenging conversations between nephrology providers and patients and family members regarding end-stage kidney disease decisions. Cases will be discussed to highlight skills that can be used for these difficult discussions.

NEPHROLOGY SOCIAL WORKER PROGRAM

Wednesday, May 8

TIME	SESSION #	SESSION	NOTES
8:00am – 12:15pm	420	New Nephrology Social Workers: Tools, Techniques, and Strategies	•
8:00am – 12:15pm	421	Trauma Informed Care	•
1:00pm – 5:15pm	422	Elephant in the Room: Violence in the Dialysis Center	•
1:00pm – 5:15pm	423	Living and Working with CKD: Research, Interventions, and Resources for Employment and QOL	•
6:30pm – 8:00pm	101	Healthcare Professionals Welcome Reception	

Thursday, May 9

TIME	SESSION #	SESSION	NOTES
8:00am – 9:30am	460	Finding Our Voice: Empowering for Social Workers and Patient Advocacy	⌘
9:30am – 10:00am		Break	
10:00am – 11:30am	461	Disparities in Access to Kidney Transplant	
10:00am – 11:30am	462	Applying Trauma Informed Care in Dialysis	
10:00am – 11:30am	561	Battling Burnout in Practitioners and Patients	
11:30am – 12:00pm		Break	
12:00pm – 2:00pm	463	Council of Nephrology Social Workers (CNSW) Networking Luncheon—All Are Welcome!	
2:00pm – 2:15pm		Break	
2:15pm – 4:00pm	266	Keynote Address and Shaul G. Massry Distinguished Lecture	
4:00pm – 4:15pm		Break	
4:15pm – 5:15pm	464	Post Incident Team De-Briefing	
4:15pm – 5:45pm	465	Driving Operational Outcomes within Social Work Ethics	⌘
4:15pm – 5:45pm	363	Increasing Patient Family Engagement	
4:15pm – 5:45pm	267	KDOQI Guidelines Update	
6:00pm – 7:30pm		Opening Ceremonies and Reception in the Exhibit Hall – Visit Posters/Exhibits	

Friday, May 10

TIME	SESSION #	SESSION	NOTES
7:00am – 8:00am		Continental Breakfast in the Exhibit Hall – Visit Posters/Exhibits	
8:15am – 9:45am	466	Optimizing Patient-Provider Relationships in Home Therapy	
8:15am – 9:45am	467	Emotional Ride to Transplant	
9:45am – 10:15am		Break	
10:15am – 11:45am	468	Embracing the Whole Journey: Helping our Patients Cope with Grief and Dying	
10:15am – 11:45am	367	Collective Competence in Healthcare: Communication, Collaboration, and Emotional Intelligence	
10:15am – 11:45am	274	Increasing Home Dialysis: Focus on Attrition and Transition	
12:00pm – 1:45pm		Break in the Exhibit Hall (Lunch Served 12:00pm – 1:30pm) – Visit Posters/Exhibits	
2:00pm – 3:30pm	469	Say “NO” to Behavior Police	
2:00pm – 3:30pm	470	Maintaining Compassion in Dialysis Social Work—Why and How	
2:00pm – 3:30pm	570	Bariatric Surgery and Obesity in CKD and Transplantation	↔
3:30pm – 4:00pm		Break	
4:00pm – 5:30pm	471	Keep C.A.L.M.: Safe Working Environment	
4:00pm – 5:30pm	472	Laughter Therapy in Dialysis: Exercise, Activity and Wellness	
4:00pm – 5:30pm	430	Social Work Poster Tour	•
4:00pm – 5:30pm	295	Never Say Never: Looking at Potential Transplant Candidates Differently	
5:30pm – 7:00pm		Networking Reception in the Exhibit Hall – Visit Posters/Exhibits	

Saturday, May 11

TIME	SESSION #	SESSION	NOTES
7:00am – 10:00am		Break in the Exhibit Hall (Breakfast Served 7:00am – 8:30am) – Visit Posters/Exhibits	
8:45am – 9:45am	281	Lazarus Lecture: Peritoneal Dialysis – Past and Present	
9:45am – 10:00am		Break	
10:00am – 11:30am	474	Kidney Allocation in Pediatrics	⌘
10:00am – 11:30am	574	Interdisciplinary Team Approach to Fluid Management and Ultrafiltration Rates	↔
11:30am – 12:00pm		Break	
12:00am – 1:00pm	475	Creativity in Meeting Pediatric Patient Needs	
12:00am – 1:00pm	476	The Big Ask, Big Give: Discussing Living Kidney Donation with Patients' Families and Friends	
12:00pm – 1:30pm	236	Workshop: Teach Each Other Well: Improving Communication Between Providers and Patients/Family Members	•
1:30pm – 2:00pm		Break	
2:00pm – 3:30pm	478	Managing Fluid Gains in Psychosocially Complex Pediatric Patients	
2:00pm – 3:30pm	285	We Need to Talk: Depression and Anxiety in Dialysis	↔
2:00pm – 3:30pm	373	Health Literacy	
3:30pm – 4:00pm		Break	
4:00pm – 5:30pm	479	Educational Challenges and Strategies in Pediatrics	
4:00pm – 5:30pm	480	"Four Mantras" For True Presence with Our Patients	
4:00pm – 5:30pm	288	How Can We Deliver Palliative Care to Our Patients: A Practical, Team-Based Approach	↔

Sunday, May 12

TIME	SESSION #	SESSION	NOTES
8:00am – 9:30am	292	Lifestyle Interventions for Clinicians to Optimize Patient Outcomes	↔
9:30am – 10:00am		Break	
10:00am – 11:30am	582	Bringing it to the Streets: Opportunities to Make a Difference in the Community	↔
11:30am		Meeting Adjourns	

• Separate Registration and/or Fee Required

↔ Interprofessional Session

⌘ Ethics Session

Visit nkfclinicalmeetings.org for additional program details and up-to-date information on SCM19.

TRANSPLANT PROFESSIONAL PROGRAM

CONTINUING EDUCATION INFORMATION

As a designated Approved Provider by the American Board for Transplant Certification (ABTC), the National Kidney Foundation, will grant up to 24.25* Category 1 Continuing Education Points for Transplant Certification (CEPTCs) for this offering.

*As of October 2018

**Note: Acquiring 24.25 continuing education points requires continuous participation from Thursday morning through Sunday morning. Many participants opt for periodic breaks, which make their continuing education points somewhat less. Additional continuing education points are provided for courses requiring separate registration.*

PRE-CONFERENCE COURSES

Wednesday, May 8

REQUIRED: Separate registration fee of \$200 for NKF Members, \$225 for Non-Members; includes light breakfast, box lunch, and Continuing Education Points. Participation is limited, so register early.

Transplant Update: 2019

Course Director: Deirdre Sawinski, MD, FAST
7:30am – 5:30pm
Session 220, 7.0 credits
See page 9 for details

LUNCH WORKSHOPS

REQUIRED: Separate registration fee of \$50; includes box lunch and CME credits. Participation is limited to 75 each, so register early.

Thursday, May 9, 12:00pm – 2:00pm

Challenging Issues in Hypertension

Session 232

Chairs: Deirdre Sawinski, MD, FAST, and Jordana Cohen, MD

Workshop Description: There are some hypertensive patients that always keep you on your toes. This workshop deals with four such conditions: pregnancy, obesity, pheochromocytoma, dysautonomia. The newest evidence and optimal approaches to managing these patients will be reviewed.

Saturday, May 11, 12:00pm – 1:30pm

Reproductive Health and Renal Disease

Session 234

Chairs: Deirdre Sawinski, MD, FAST, and Jaya Kala, MD

Workshop Description: In this workshop, experts in the field will review the range reproductive health issues in patients with renal disease. The impact of CKD, ESRD and transplantation on fertility and pregnancy outcomes will be discussed. Other topics include: reproductive technologies, contraception and immunosuppression management for the pregnant patient.

Teach Each Other Well: Improving Communication Between Providers and Patients/Family Members

Session 236

Chair: Robert Cohen, MD, FNKF

Workshop Description: This interactive, inter-professional workshop will teach communication tools for challenging conversations between nephrology providers and patients and family members regarding end-stage kidney disease decisions. Cases will be discussed to highlight skills that can be used for these difficult discussions.

TRANSPLANT PROFESSIONAL PROGRAM

Wednesday, May 8

TIME	SESSION #	SESSION	NOTES
7:30am – 5:30pm	220	Transplant Update: 2019	•
6:30pm – 8:00pm	101	Healthcare Professionals Welcome Reception	

Thursday, May 9

TIME	SESSION #	SESSION	NOTES
8:00am – 9:30am	260	A Growing Problem: Obesity in CKD and Transplantation	
8:00am – 9:30am	661	Update in Transplantation	
9:30am – 10:00am		Break	
10:00am – 11:30am	362	Status and Advances in the Development of the Artificial Wearable Kidney	
10:00am – 11:30am	461	Disparities in Access to Kidney Transplant	
11:30am – 2:15pm		Break	
2:15pm – 4:00pm	266	Keynote Address and Shaul G. Massry Distinguished Lecture	
4:00pm – 4:15pm		Break	
4:15pm – 5:45pm	363	Increasing Patient Family Engagement	
4:15pm – 5:45pm	267	KDOQI Guidelines Update	
4:15pm – 5:45pm	268	Expanding Access to Transplant: New Perils, New Opportunities	
6:00pm – 7:30pm		Opening Ceremonies and Reception in the Exhibit Hall – Visit Posters/Exhibits	

Friday, May 10

TIME	SESSION #	SESSION	NOTES
7:00am – 8:30am		Continental Breakfast in the Exhibit Hall – Visit Posters/Exhibits	
8:15am – 9:45am	269	Debate: APOL1 Testing in Living Kidney Donation	
8:15am – 9:45am	467	Emotional Ride to Transplant	
8:15am – 9:45am	365	Advanced Care Planning: A Renal Pilot project	
9:45am – 10:15am		Break	
10:15am – 11:45am	367	Collective Competency in Healthcare: Interprofessional Collaboration and Emotional Intelligence	
10:15am – 11:45am	272	Opioid Stewardship in CKD and Transplant Patients: An Overlooked Problem?	
11:45am – 2:00pm		Lunch Break	
2:00pm – 3:30pm	570	Bariatric Surgery and Obesity in CKD and Transplantation	↔
2:00pm – 3:30pm	470	Maintaining Compassion in Dialysis Social Work—Why and How	
3:30pm – 4:00pm		Break	
4:00pm – 5:30pm	279	What’s “Old” Is New Again: Incorporating Geriatric Assessments across the Kidney Disease Spectrum	
4:00pm – 5:30pm	295	Never Say Never: Looking at Potential Transplant Candidates Differently	
4:00pm – 5:30pm	430	Guided Tour of the Posters	•
5:30pm – 7:00pm		Networking Reception in the Exhibit Hall – Visit Posters/Exhibits	

Saturday, May 11

TIME	SESSION #	SESSION	NOTES
7:00am – 10:00am		Break in the Exhibit Hall (Breakfast Served 7:00am – 8:30am) – Visit Posters/Exhibits	
10:00am – 11:30am	474	Kidney Allocation in Pediatrics	
11:30am – 12:00pm		Break	
12:00pm – 1:30pm	234	Workshop: Reproductive Health and Renal Disease	•
12:00pm – 1:30pm	236	Workshop: Teach Each Other Well: Improving Communication Between Providers and Patients/Family Members	•
1:30pm – 2:00pm		Break	
2:00pm – 3:30pm	285	We Need to Talk: Depression and Anxiety in Dialysis	⇔
2:00pm – 3:30pm	373	Health Literacy	
3:30pm – 4:00pm		Break	
4:00pm – 5:30pm	379	Organ Donation: The Changes Over the Years	
4:00pm – 5:30pm	288	How Can We Deliver Palliative Care to Our Patients: A Practical, Team-Based Approach	
4:00pm – 5:30pm	289	Nephrology Without Borders	

Sunday, May 12

TIME	SESSION #	SESSION	NOTES
8:00am – 9:30am	292	Lifestyle Interventions for Clinicians to Optimize Patient Outcomes	⇔
9:30am – 10:00am		Break	
10:00am – 11:30am	582	Bringing it to The Streets: Opportunities to Make a Difference in The Community	⇔
11:30am		Meeting Adjourns	

*A maximum of 1.0 credit only will be awarded for Poster Sessions

• Separate Registration and/or Fee Required

⇔ Interprofessional Session

Visit nkfclinicalmeetings.org for additional program details and up-to-date information on SCM19.

REGISTRATION INFORMATION

ADVANCED REGISTRATION DEADLINE: FEBRUARY 22, 2019

Please visit nkfclinicalmeetings.org to register and for further details.

NOTE: Registration after February 22, 2019 will result in an additional fee of \$50 (\$100 on site).

GENERAL MEETING REGISTRATION FEES INCLUDE:

- ▶ Attendance from Thursday, May 9 – Sunday, May 12
- ▶ All meals/activities in the Exhibit Hall (2 breakfasts, 1 lunch, 2 networking receptions)
- ▶ Professional Council Networking Luncheons
- ▶ Breakfast, lunch, and dinner corporate-supported symposia (seating is limited and on a first-come, first-served basis)
- ▶ CME/CE Credits/contact hours

PRE-CONFERENCE COURSES (TUESDAY, MAY 8) AND WORKSHOPS

All pre-conference courses and lunch workshops require a separate registration and fee.

Go to nkfclinicalmeetings.org to obtain additional information and to register.

GENERAL MEETING REGISTRATION FEES

DISCIPLINE	OCTOBER 15, 2018 – FEBRUARY 22, 2019	FEBRUARY 23, 2019 – MAY 6, 2019	ON-SITE
Physicians Pharmacists General Attendees	\$425 NKF Member \$700 Non-Member \$175 Fellows (proof of status required) \$125 Resident (proof of status required)	\$475 NKF Member \$750 Non-Member \$175 Fellows (proof of status required) \$125 Resident (proof of status required)	\$525 NKF Member \$800 Non-Member \$175 Fellows (proof of status required) \$125 Resident (proof of status required)
Physician Assistants Nurse Practitioners Nurses Dietitians Social Workers	\$325 NKF Member \$480 Non-Member \$25 Student (proof of status required)*	\$375 NKF Member \$530 Non-Member \$25 Student (proof of status required)*	\$425 NKF Member \$580 Non-Member \$20 Student (proof of status required)*
Technicians	\$185 NKF Member \$285 Non-Member \$25 Student (proof of status required)*	\$185 NKF Member \$285 Non-Member \$25 Student (proof of status required)*	\$185 NKF Member \$285 Non-Member \$25 Student (proof of status required)*

* Must be a full-time student to receive student pricing.

Cancellation Policy: Refund requests must be made in writing and postmarked before **April 5, 2019** and are subject to a 10% administrative fee. Requests postmarked after **April 5, 2019** will not be accepted.

HOTEL ACCOMMODATIONS

ADVANCE HOUSING DEADLINE: MARCH 11, 2019

Rooms are available at Boston Marriott Copley Place, Sheraton Boston Hotel, and Westin Copley Place Boston.

The discounted group rate is \$254 – \$275 per night, depending on the hotel (plus tax). Reservation confirmations will be sent within 5 days of receipt by the hotel's reservations department. Should you not receive your confirmation, please contact the hotel to ensure your request was processed.

For additional hotel information and to make a reservation, please visit nkfclinicalmeetings.org or call the hotel directly and state that you are an SCM19 attendee.



Note: Although NKF has reserved room blocks in these hotels, it is possible for the blocks to be sold out. To ensure accommodations at the above hotels, we encourage you to make your hotel arrangements early.

PROFESSIONAL EDUCATION RESOURCE CENTER

PERC

FREE* Online CME/CE for:

- Physicians
- Pharmacists
- Advanced Practitioners
- Nurses
- Dialysis Technicians
- Dietitians
- Social Workers
- Transplant Professionals



Benefits of PERC

- Personalized profile/login
- FREE for NKF members
- View your completed activities in one place
- More discipline-specific courses than ever before!
- Earn CME/CEs anytime, anywhere!

**Browse our
activity offerings
today!**

[kidney.org/education](https://www.kidney.org/education)

**Check back regularly
for additional courses.**

FACULTY*

*As of October, 2018

Nina Abiera, LCSW, NSW-C, MPA
US Renal Care of West Los Angeles
Los Angeles, CA

Kenneth Abreo, MD, FASDIN
LSU Health Shreveport School of Medicine
Shreveport, LA

Kathryn Aebel-Groesch, MSW, LCSW
DaVita Kidney Care
St. Louis, MO

Varun Agarwal, MD
University of Vermont College of Medicine
Burlington, VT

Shirley Alexander-Das, MSW, LSW
Children's Hospital of Richmond at VCU
Richmond, VA

Michael Allon, MD
University of Alabama at Birmingham
School of Medicine
Birmingham, AL

Marissa Argentina, LMSW
National Kidney Foundation
New York, NY

Joshua Augustine, MD
Cleveland Clinic Lerner College
of Medicine
Cleveland, OH

Rupali Avasare, MD
Oregon Health & Science University
Portland, Oregon

Vishal Bagchi, MBA, RD, LD
Patient Care America
Dallas, TX

Joanne Bargman, MD
University Health Network
Toronto, Ontario, Canada

Christine Barrett, MS, RDN, LD
Davita Leavenworth
Leavenworth, KS

Laurence Beck, MD, PhD
Boston University School of Medicine
Boston, MA

Jamie Jo Benken, PharmD
University of Illinois at Chicago
Chicago, IL

Paul Bennett, RN, MHSM, PhD
Satellite Healthcare
San Jose, CA

Kelly Birdwell, MD, MSCl
Vanderbilt University Medical Center
Nashville, TN

Sharon Brandl, MEd, RDN, CSR, LDN
DaVita Inc.
Virginia Beach, VA

Teri Browne, PhD, MSW, NSW-C
University of South Carolina
Columbia, SC

Megan Buckendahl, RD
DaVita Inc.
Denver, CO

Mary Beth Callahan, ACSW/LCSW
Dallas Nephrology Associates/Dallas
Transplant Institute
Dallas, TX

Pietro Cannetta, MD
Columbia University
New York, NY

Katie Cardone, PharmD
Albany College of Pharmacy and
Health Sciences
Albany, NY

Vincent Carsillo, DO
Capital District Renal Physicians
Albany, NY

Lilia Cervantes, MD
University of Colorado Denver -
Anschutz Medical Campus
Denver, CO

Christopher Chan, MD, FRCPC
University Health Network
Toronto, Ontario, Canada

Micah Chan, MD, MPH, FACP, FNKF
University of Wisconsin School of
Medicine and Public Health
Madison, WI

Kunal Chaudhary, MD
University of Missouri Health Care
Columbia, MO

Alexis Chettair, PhD, RN, MSN, ACNP-BC
University of California San Francisco
Oakland, CA

Michael Chobanian, MD
Dartmouth-Hitchcock
Lebanon, NH

Michael Choi, MD, FNKF
John Hopkins University School
of Medicine
Baltimore, MD

Steven Coca, DO
Icahn School of Medicine at Mount Sinai
New York, NY

Carolyn Cochran, MS, RDN, LD, CDE
Dallas Nephrology Associates
Dallas, TX

Jordana Cohen, MD, MSCE
Perelman School of Medicine,
University of Pennsylvania
Philadelphia, PA

Debbie Cohen, MD
University of Pennsylvania
Wynnewood, PA

Robert Cohen, MD
Beth Israel Deaconess Medical Center
Department of Medicine
Boston, MA

Sara Colman, RD, CDE
DaVita Inc.
Denver, CO

Danilo Concepcion, CBNT, CCHT-A, FNKF
St. Joseph Hospital
Orange, CA

Michael Connor, MD
Emory University School of Medicine
Atlanta, GA

Frank Cortazar, MD
Massachusetts General Hospital
Boston, MA

Jie Cui, MD
Massachusetts General Hospital
Boston, MA

Robin Dauterive, MD
Baylor Scott and White Health
Hutto, TX

Jane Davis, DNP, CRNP, FNKF
University of Alabama at Birmingham
Birmingham, AL

Kimberly Davis, NP
NxStage Medical
New York, NY

Jennifer Day, NP-C
Baylor Scott & White Health
Tempe, AZ

Mona Doshi, MBBS
Michigan Medicine Transplant Clinic
Taubman Center
Ann Arbor, MI

Michael Emmet, MD, MACP
Baylor University Medical Center
Dallas, TX

Deborah Evans, MA, LCSW
DaVita Inc.
Gainesville, FL

Elizabeth Evans, RN, MSN, DNP, FNKF
Renal Medical Associates
Albuquerque, NM

Andrew Fenves, MD
Massachusetts General Hospital
Boston, MA

Hilda Fernandez, MD, MSCE
Columbia University Medical Center
New York, NY

Christina Finotti, RD, CSR
Children's Hospital of Richmond at VCU
Richmond, VA

Stephen Fishbane, MD
Northwell Health
Great Neck, NY

William Fissell, MD
Vanderbilt University
Nashville, TN

Jennifer Flythe, MD, MPH
UNC Kidney Center
Chapel Hill, NC

Derek Forfang
Patient Advocate
San Pablo, CA

John Forman, MD
Brigham and Women's Hospital,
Renal Division
Boston, MA

Nora Franceschini, MD, MPH
UNC Gillings School of Global Public Health
Chapel Hill, NC

Jaime Freleng, RD, LD
Nutrition Services
St. Louis, MO

Michael Gallichio, MD
Capital District Renal Physicians
Albany, NY

Gregory Germino, MD
National Institute of Diabetes and
Digestive and Kidney Diseases
Bethesda, MD

Thomas Golper, MD
Vanderbilt University Medical Center
Nashville, TN

Elisa Gordon, PhD, MPH
Northwestern University Feinberg School
of Medicine
Chicago, IL

Karen Griffin, MD, FACP
Loyola University Medical Center
Maywood, IL

Rasheeda Kamial Hall, MD
Duke University School of Medicine
Durham, NC

Haewook Han, PhD, RD, CSR, LDN
Atrius Health
North Quincy, MA

Kathy Harvey, MS, RDN, CSR
Puget Sound Kidney Centers
Mountlake Terrace, WA

Macey Henderson, JD, PhD
John Hopkins Medicine
Baltimore, MD

Jenna Henderson, MD
Holistic Kidney
Danbury, CT

Dirk Hentschel, MD
Brigham and Women's Hospital
Boston, MA

Leal Herlitz, MD
Cleveland Clinic
Cleveland, OH

Joanne Hindlet, CNP, FNKF
Houston Nephrology Group
Houston, TX

Jonathan Hogan, MD
University of Pennsylvania
Philadelphia, PA

Susie Hu, MD
Brown Medicine, Inc.
East Providence, RI

T. Alp Ikizler, MD
Vanderbilt University Medical Center
Nashville, TN

Zubin Irani, MBBS
Massachusetts General Hospital
Boston, MA

Edgar Jaimes, MD
Memorial Sloan Kettering Cancer Center
New York, NY

Kenar Jhaveri, MD
Northwell Health
Great Neck, NY

Belinda Jim, MD
Jacobi Medical Center
Bronx, NY

Kirsten Johansen, MD
University of California San Francisco
San Francisco, CA

Richard Johnson, MD
University of Colorado Hospital
Aurora, CO

Elizabeth Jones, MSW, LCSW, FNKF
DaVita Inc.
Sterling, VA

Shivam Joshi, MD
NYU School of Medicine
New York, NY

Eric Judd, MD
University of Alabama at Birmingham
School of Medicine
Birmingham, AL

Peter Juergensen, PA-C
Metabolism Associates
Cheshire, CT

Kamyar Kalantar-Zadeh, MD, MPH, PhD
University of California - Irvine
Orange, CA

Sandra Kane-Gill, PharmD, MS, FCCM, FCCP
University of Pittsburgh School of
Pharmacy
Pittsburgh, PA

Alison Kaprove, MS, PA-C
Tufts Medical Center
Boston, MA

Louise Kato
Northwest Kidney Center
Seattle, WA

Pamela Kent, MS, RD, CDE, LD
Centers for Dialysis Care
Vermilion, OH

Christina Klein, MD
Piedmont Transplant Institute
Atlanta, GA

Zorica Klein, PhD
Oakland University
Rochester, MI

Lisa Koester, ANP, CNN-NP
Washington State University
St. Louis, MO

Camille Kotton, MD, FIDSA, FAST
Harvard Medical School
Cambridge, MA

Holly Kramer, MD, MPH
Loyola University Chicago
Maywood, IL

Jeffrey Kraut, MD
University of California, Los Angeles
Los Angeles, CA

Jane Kwatcher, MSW, LCSW
DaVita Inc.
Claremont, CA

Benjamin Laskin, MD, MS
Children's Hospital of Philadelphia
Philadelphia, PA

Amy Lemke, LMSW
Mercy Medical Center
Clinton, IA

Nelson Leung, MD
Mayo Clinic
Rochester, MN

Robert Levin, MD
Renal Research Institute
New York, NY

Mary Lincoln, RN, BSN, MHA
Mercy Medical Center
Clinton, IA

Denise Link, PA-C, FNKF
University of Texas Southwestern
Medical Center
Irving, TX

Jayne Locke, MD, MPH, FACS
University of Alabama at Birmingham
Birmingham, AL

Charmaine Lok, MD
University Health Network
Toronto, Ontario, Canada

Barbara Malone, DNP, CFNP, FNKF
University of Colorado Denver
Golden, CO

Mara McAdams Demarco, PhD
Johns Hopkins Bloomberg School
of Public Health
Baltimore, MD

Finnian McCausland, MD
Brigham and Women's Hospital,
Renal Division
Boston, MA

Carrie Means, LISW, NSW-C
University of Iowa Health Care
Iowa City, IA

Sumit Mohan, MD, MPH
Columbia University Medical Center
New York, NY

Michele Mokryzcki, MD
Albert Einstein College of Medicine
Bronx, NY

Beth Morlang, RD, LD, FNKF
Central Florida Kidney Centers
Palm Bay, FL

Dorothy Muench, LCSW, NSW-C, FNKF
Wake Forest Baptist Medical
Center
Winston Salem, NC

Annie- Claire Nadeau- Fredette, MD
University of Montreal
Montreal, Quebec, Canada

Mohanram Narayanan, MD
Baylor Scott and White Healthcare
Temple, TX

Daniel Negoianu, MD
University of Pennsylvania
Philadelphia, PA

Marianne Neumann, RN, CNN, FNKF
Albany Regional Kidney Center
Rensselaer, NY

Sagar Nigwekar, MD, MMSc
Massachusetts General Hospital
Boston, MA

Vandana Niyayar, MD, FASN, FNKF, FASDIN
Emory University School of Medicine
Atlanta, GA

Natalie Odum, LMSW
Fresenius Medical Care North America
Abita Springs, LA

Jo Ann Otts, DNP, RN, NEA-BC, FNKF
University of South Alabama
Fairhope, AL

Biff Palmer, MD
UT Southwestern Medical Center
Dallas, TX

Meyeon Park, MD, MAS, FASN
University of California San Francisco
San Francisco, CA

LeAnne Peace, MSW, LCSW, MHA
University of Missouri Health Care
Columbia, MO

Aldo Peixoto, MD
Yale University School of Medicine
New Haven, CT

Gary Pentingola, BSA, MSW, RSW
Health Sciences North
Sudbury, Ontario, Canada

Mark Perazella, MD, FACP, FNKF
Yale University School of Medicine
New Haven, CT

Connie Perkins, LCSW
Levine Children's Hospital
Charlotte, NC

Jeffrey Perl, MD, SM, FRCP(C)
St. Michael's Hospital
Toronto, Ontario, Canada

Ronald Perrone, MD, FNKF
Tufts Medical Center
Boston, MA

Beth Piraino, MD, FNKF
University of Pittsburgh School of Medicine
Pittsburgh, PA

Laura Plantinga, PhD
Emory University School of Medicine
Atlanta, GA

Emilio Poggio, MD
Glickman Urological and Kidney Institute
Cleveland, OH

Neil Powe, MD, MPH, MBA
Zuckerberg San Francisco General Hospital
San Francisco, CA

Anne Pugh, MSW, LCSW
Health Services Advisory Group
Berkeley, CA

Patrick Pun, MD
Duke University School of Medicine
Durham, NC

Rajeev Raghavan, MD, FASN
Baylor College of Medicine
Houston, TX

Frederic Rahbari Oskoui, MD
Emory University School of Medicine
Atlanta, GA

Mohammed Razzaque, MD
Harvard School of Dental Medicine
Boston, MA

Jillian Reese, RD, LDM, CSOWN
Tufts Medical Center
Boston, MA

Heather Reich, MD CM, PhD, FRCPC
University of Toronto
Toronto, Ontario, Canada

Martin Reinsel, MA, LMHC
Northwest Kidney Center
Seattle, WA

Connie Rhee, MD
University of California Irvine
School of Medicine
Irvine, CA

Leonardo Riella, MD, PhD
Harvard Medical School
Boston, MA

Michael Rocco, MD, MSCE, FNKF
Wake Forest School of Medicine
Winston-Salem, NC

Rudolph Rodriguez, MD, FACP
VA Puget Sound Medical Center
Seattle, WA

Helbert Rondon, MD, MS, FACP, FASN
University of Pittsburgh School of Medicine
Pittsburgh, PA

Sylvia E. Rosas, MD, FNKF
Joslin Diabetes Center
Boston, MA

Daniel Ross, MD, MPH
Northwell Health
Great Neck, NY

Elanderia Rowe, LMSW-IPR, NSW-C, LSS, FNKF
DaVita Renal Center of Carrollton
Carrollton, TX

Joseph Sala, BSc, ED, CHT, CWR, CWS
Mount Sinai Kidney Center
New York, NY

Jessiana Saville, MS, RDN, LD, CLT
Preventative Nutrition Specialists
Bryan, TX

Deirdre Sawinski, MD, FAST
Hospital of the University of Pennsylvania
Philadelphia, PA

Donna Scannapieco, RN
Fresenius Medical Care
Philadelphia, PA

Dori Schatell, MS
Medical Education Institute, Inc.
Madison, WI

Jennifer Scherer, MD
New York University
New York, NY

Jesse Schold, PhD
Lerner Research Institute
Cleveland, OH

Adrian Sequeira, MD
LSU Health Shreveport School of Medicine
Shreveport, LA

Tariq Shafi, MBBS, MHS
Johns Hopkins Bayview Medical Center
Baltimore, MD

Belinda Shanley, RD
DSI Renal
Orange, CT

Richard Sherman, MD
Rutgers Health
New Brunswick, NJ

Eric Sheu, MD, PhD
Brigham and Women's Hospital
Boston, MA

Vernon Silva, LCSW, NSW-C
US Renal Care
Redondo Beach, CA

Leah Smith, FNP-BC, CNN-NP, FNKF
Metrolina Nephrology Associates
Mint Hill, NC

Alexis Harris-Snead, MD
AmeriPath
Edmond, OK

Sandeep Soman, MD
Henry Ford Hospital
Detroit, MI

Erika Spann, RD
US Renal Care
Lomita, CA

Matthew Sparks, MD
Duke University School of Medicine
Durham, NC

Brittany Sparks, RDN, CSR
Nutrition by Brittany, LLC
Westminster, CO

Felicia Speed, LMSW
Fresenius Medical Care
Waltham, MA

Alison Steiber, PhD, RDN
Academy of Nutrition and Dietetics
Chicago, IL

Matt Stricherz, EdD
New Mexico Behavioral Health Institute
Montezuma, NM

Mary Sundell, MLAS, RD, LDN, FNKF
Vanderbilt University
Nashville, TN

Paul Szczybor, PA-C
Northwest Hospital
Catonsville, MD

Harold Szerlip, MD, FNKF
Baylor Scott & White Health
Dallas, TX

Jessica Tangren, MD
Massachusetts General Hospital
Boston, MA

Charlonda Thrower, LMSW, MBA-HCM
Fresenius Medical Care
Dallas, TX

Joel Topf, MD
St. John's Hospital
Detroit, MI

Gail Torres, RN, MS, RD
National Kidney Foundation
New York, NY

Raymond Townsend, MD
University of Pennsylvania
Philadelphia, PA

Sam Trevino, BA
Urine Inspiration
Fort Worth, TX

Junior Uduman, MD
Henry Ford Hospital
Detroit, MI

Mark Unruh, MD
University of New Mexico Health
Sciences Center
Albuquerque, NM

Jaime Uribarri, MD
Icahn School of Medicine at Mount Sinai
New York, NY

Gerald VanBolt, BA
Anthrosolutions LLC
Garfield Heights, OH

Joseph Vassalotti, MD, FNKF
National Kidney Foundation
New York, NY

Jennifer Vavrinchik, MS, RN, CNN
Nephrology Clinical Solutions
Lisle, IL

Sushrut Waikar, MD, MPH
Brigham and Women's Hospital
Boston, MA

Ron Wald, MDCM, MPH
St. Michael's Hospital
Toronto, Ontario, Canada

Daniel Weiner, MD, MS, FNKF
Tufts Medical Center
Boston, MA

Katy Wilkins, MS, RD
Northwest Kidney Centers
Seattle, WA

Jeffrey William, MD
Harvard Medical School
Boston, MA

Richard Winn, MD
Texas Tech University
Lubbock, TX

Alexander Wiseman, MD, FAST
University of Colorado School of Medicine
Denver, CO

David Wojciechowski, DO
Massachusetts General Hospital
Boston, MA

Steven Wu, MD
Harvard Medical School
Cambridge, MA

Jerry Yee, MD
Henry Ford Health System
Detroit, MI

Cathy Yeung, PharmD
University of Washington
Seattle, WA

Alan Yu, MD
University of Kansas Medical Center
Kansas City, KS

Kim Zuber, MS, PAC
American Academy of Nephrology PAs
Oceanside, CA

IMPORTANT DATES

FEB 8, 2019
APPLICATION
DEADLINE

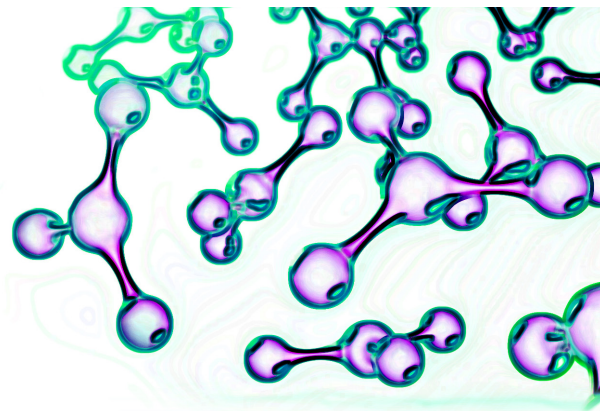
LATE SPRING 2019
NOTIFICATION
OF AWARDS

**JUL 1, 2019–
JUN 30, 2020**
AWARD
PERIOD



National
Kidney
Foundation®

RESEARCH GRANTS



CALL FOR APPLICATIONS

DEADLINE FEBRUARY 8

[KIDNEY.ORG/RESEARCHGRANT](https://www.kidney.org/researchgrant)

We are pleased to announce the availability of grant support during the period beginning **July 1, 2019**. These one-year awards include:

FOR JUNIOR FACULTY

- Three (3) NKF Young Investigator Grants
- One (1) Chastain Renal Research Grant of Arkansas
- One (1) Southeast Texas Research Grant
- One (1) Satellite Dialysis Clinical Investigator Grant of the NKF
- One (1) Krainin Memorial Young Investigator Award

The National Kidney Foundation gratefully acknowledges that the NKF Young Investigator Grant Program is made possible by support from, or in honor of, the following organizations and individuals:

American Society of Nephrology | Victor Chaltiel Foundation
Diana & Stephen Goldberg | Shaul G. Massry, MD | Pfizer Laboratories
Solomon Papper, MD | Patricia Welder Robinson | Donald Seldin, MD
George Schreiner, MD | Robert Schrier, MD | Hilda Gershon Sugarman



MEMBERS GET THE BEST PERKS

Join or renew to get exclusive discounts on registration to the NKF 2019 Spring Clinical Meetings and practical resources at your fingertips – 365 days a year!

ADDITIONAL NKF MEMBER BENEFITS INCLUDE:

- ▶ Subscriptions to NKF journals and publications: *AJKD*, *ACKD*, *JRN*, *JNSW*, *RenaLink*, *Currently Kidney* (depending on discipline)
- ▶ Savings on all educational programs, resources, and items in the NKF online store
- ▶ Free online courses in NKF's Professional Education Resource Center (PERC)
- ▶ A chance to receive special NKF awards, scientific research grants, and educational stipends
- ▶ Eligibility for professional designations and certifications (depending on discipline).



[kidney.org/membership](https://www.kidney.org/membership)



National
Kidney
Foundation®

30 East 33rd Street
New York, NY 10016

FUTURE NKF SPRING CLINICAL MEETINGS

2020 NEW ORLEANS, LA

Ernest N. Morial Convention Center
March 25–29

2021 ORLANDO, FL

Walt Disney World Swan and Dolphin
April 6–10

2022 BOSTON, MA

Hynes Convention Center
April 6–10



nkfclinicalmeetings.org

#NKFCLINICALS



Hynes Convention Center Boston, MA

IMPORTANT DEADLINES

Abstract Submission:

Dec 3, 2018

Educational Stipends:

Jan 18, 2019

Advance Registration:

Feb 22, 2019

Advance Housing Reservations:

Mar 11, 2019

NKFCLINICALMEETINGS.ORG

Your One-Stop Shop for All Your SCM19 Needs!

- Latest Program Details
- Online Registration
- Faculty
- Award Winners
- Housing
- Educational Stipends
- Exhibitor Information