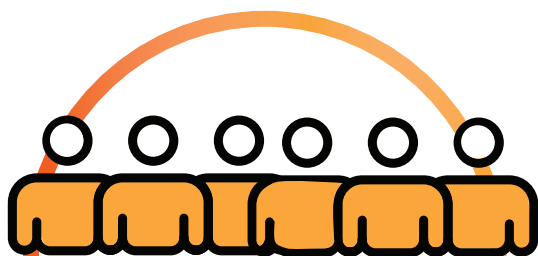


CHRONIC KIDNEY DISEASE (CKD)



37 MILLION

adults have CKD and
90% don't know



\$120 BILLION

Medicare spent on
kidney patients

2019

24,250
received a kidney



95,000
waiting for a kidney



6,900
living kidney donors



41,000
were added to
the waiting list



3,400
died waiting



For additional information, contact NKFadvocacy@kidney.org

Sources of Facts and Statistics: Organ Procurement and Transplantation Network (OPTN), January 2020



HOW CAN CONGRESS HELP?

Living Donor Protection Act (S. 511/H.R. 1224)

Co-sponsor legislation that would prohibit discrimination in life, disability, or long-term care insurance for living donors. The bill also adds living organ donation to the Family and Medical Leave Act (FMLA).

Immunosuppressive Drug Coverage for Kidney Transplant Patients Act (S. 3353/H.R. 5534)

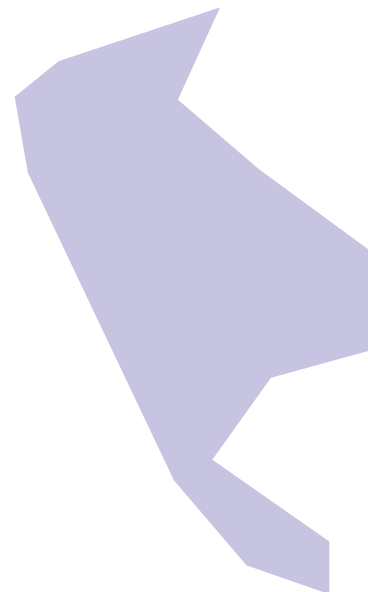
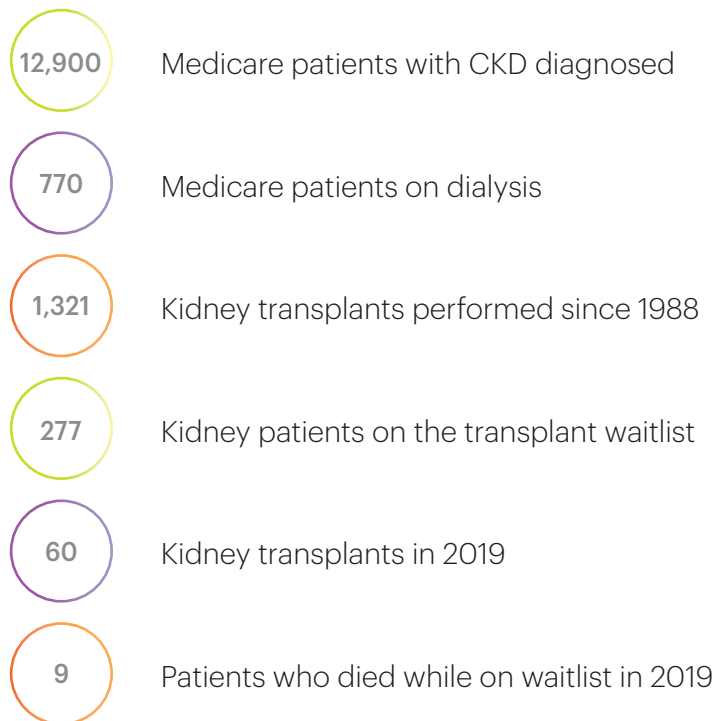
Medicare covers immunosuppressants for only 36 months post-transplant, leaving many recipients struggling to find affordable coverage. Extending Medicare coverage for immunosuppressive medications indefinitely ensures patients have access to these medications.

Appropriations

Increase funding in FY2021 for:

- The Kidney Public Awareness Initiative (\$10m)
- Kidney X, the Kidney Innovation Accelerator (\$25m)
- CDC's Chronic Kidney Disease Initiative (\$5m)
- National Living Donor Assistance Center (NLDAC) (\$10m)
- National Institutes of Diabetes, Digestive and Kidney Disease (NIDDK) (\$2.25b)

RHODE ISLAND



AVERAGE COST TO MEDICARE

Dialysis patient	\$90,232.00
Transplant after first year	\$25,942.00
Immunosuppressant medication	\$2,232.00