

VASCULAR ACCESS

CVC Dysfunction: Interventional Management

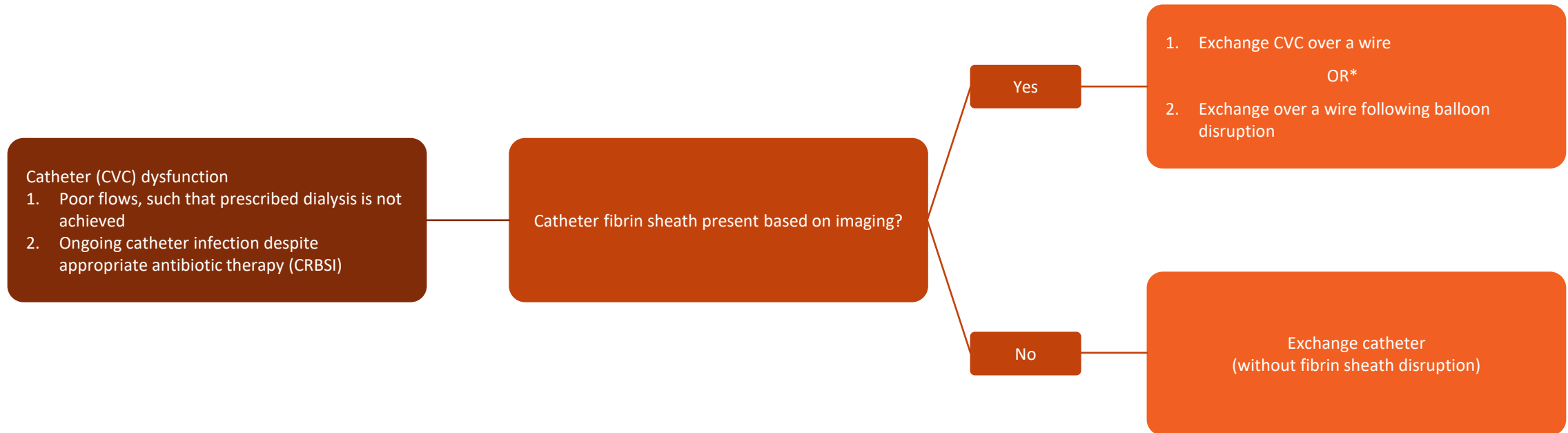


NATIONAL KIDNEY
FOUNDATION®

Flow Diagram 22.c. Interventional Management of CVC Dysfunction

Note: This strategy applies if the exit site and tunnel is infection free (i.e. no redness, discharge etc.)

CPG 22.6-8



* Decision is based on local practice patterns and feasibility

CVC removal followed by replacement at a different site should be the last resort after conservative, medical, and other mechanical (e.g., angioplasty, CVC exchange) strategies have all failed to treat CVC dysfunction.