



30 East 33rd Street  
New York, NY 10016  
800.622.9010

Nonprofit  
US Postage Paid  
National  
Kidney  
Foundation

**A FREE CME/CE ACTIVITY IN AN  
ON-DEMAND WEBCAST PRESENTATION**

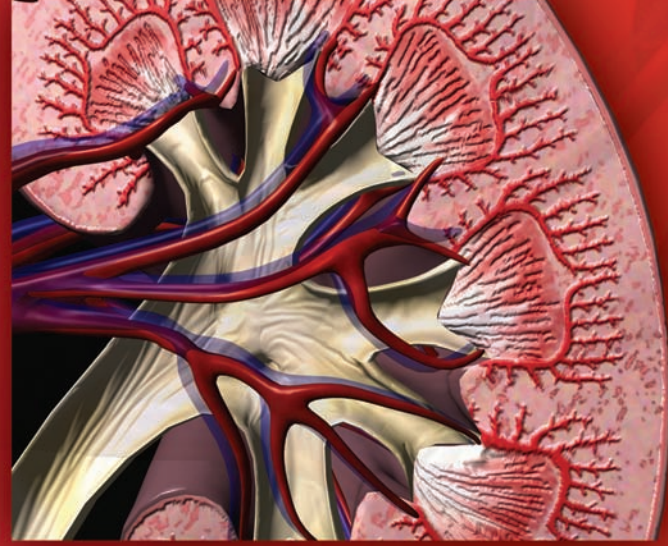
*The Healthcare Team Approach to*

*Managing Metabolic and Regulatory Disturbances of*  
**CHRONIC KIDNEY DISEASE**

© 2011 National Kidney Foundation, Inc. All rights reserved. 02-10-4367\_JBB

A FREE CME/CE ACTIVITY IN AN ON-DEMAND WEBCAST PRESENTATION

# *The Healthcare Team Approach to* Managing Metabolic *and* Regulatory Disturbances of **CHRONIC KIDNEY DISEASE**



Release Date: September 30, 2011  
Expiration Date: September 30, 2013

Accredited by



**National Kidney  
Foundation®**

Supported by an educational grant from



## TARGET AUDIENCE

- Physicians
- Physician assistants
- Nurses
- Nurse practitioners
- Dietitians
- Dialysis technicians
- Pharmacists
- Social workers
- Case managers

## OVERVIEW

The purpose of this program is to educate advanced practitioners, nephrologists, pharmacists, nurses, dialysis technicians, social workers, dietitians and case managers about how to manage mineral and bone disturbances in chronic kidney disease, and address the following educational needs: 1) Lack of appreciation for the significant disturbances in bone and mineral metabolism in early stages of CKD; 2) Less-than-optimal understanding of the risks of calcium-based binder use and extraskeletal calcification; 3) Inadequate knowledge of the risks and benefits of phosphate binder therapeutic options for patients across all stages of CKD; and 4) Inefficient and inconsistent team approaches to addressing the medical, social, and educational needs of patients with CKD.

## LEARNING OBJECTIVES

- Upon successful completion of this activity, participants will be able to:
- Review the mineral and bone disturbances associated with the early stages of CKD
  - Summarize the scientific knowledge around the pathophysiology and risks of extraskeletal calcification in CKD
  - Apply phosphate binder strategies to manage mineral abnormalities in patients across all stages of CKD
  - Describe the team approach to care for the patient with CKD

## TOPICS

- Current Perspectives in CKD-MBD: Pathophysiology and Risk
- Integrating Effective Phosphorus and Calcium Management Strategies Across the Continuum of CKD
- Applying a Multidisciplinary Approach to Optimize Care for CKD

## FACULTY

**Ellie Kelepouris, MD, FAHA**  
Department of Medicine  
Professor and Chief, Division of Nephrology and Hypertension  
Drexel University College of Medicine  
Philadelphia, PA

**Csaba P. Kovesdy, MD, FASN**  
Chief of Nephrology  
Salem VA Medical Center  
Associate Professor  
University of Virginia  
Charlottesville, VA

**Donna Zazworsky, RN, MS, CCM, FAAN**  
VP of Community Health and Continuum Care  
Carondelet Health Network  
Tucson, AZ

## ACCREDITATION

**Physician**  
The National Kidney Foundation is accredited by the Accreditation Council for Continuing Medical Education to provide continuing medical education for physicians.

The National Kidney Foundation designates this enduring material for a maximum of 1.5 *AMA PRA Category 1 Credits™*. Physicians should claim only the credit commensurate with the extent of their participation in the activity.

**Physician Assistant**  
AAPA accepts certificates of participation for educational activities certified for Category I credit from AOACCME, Prescribed credit from AAFP, and *AMA PRA Category 1 Credit™* from organizations accredited by ACCME or a recognized state medical society. Physician assistants may receive a maximum of 1.5 hours of Category I credit for completing this program.

**Nurse and Dialysis Technician**  
The National Kidney Foundation is an approved provider of continuing nursing education by the New York State Nurses Association, an accredited approver by the American Nurses Credentialing Center's Commission on Accreditation.

It has been assigned Provider code 7QPLGU-PRV-09.

1.5 contact hours will be awarded.

**Nurse Practitioner**  
This program is approved for 1.4 contact hours of continuing education (which includes

0.5 hour of pharmacology) by the American Academy of Nurse Practitioners. Program ID 1108257.

This program was planned in accordance with AANP CE Standards and Policies and AANP Commercial Support Standards.



### **Dietitian**

The National Kidney Foundation is a Continuing Professional Education (CPE) Accredited Provider with the Commission on Dietetic Registration (CDR). Registered Dietitians (RDs) and Dietetic Technicians, Registered (DTRs) will receive 1.5 continuing professional education units (CPEUs) for completion of this program/material.



### **Pharmacist**

The University of Illinois at Chicago College of Pharmacy is accredited by the Accreditation Council for Pharmacy Education (ACPE) as a provider of continuing pharmacy education. Completion of the entire knowledge-based activity, post-test questions, and evaluation are prerequisites for receiving a statement of continuing pharmacy education credit for 1.5 contact hours (0.15 CEUs). You will receive your statement of credit immediately upon successful completion of the CPE activity. This activity has been assigned ACPE Universal Activity Number 016-999-11-126-H01-P.

### **Social Worker**

The National Kidney Foundation Council of Nephrology Social Workers, Provider #1014, is approved as a provider for social work continuing education by the Association of Social Work Boards (ASWB), [www.aswb.org](http://www.aswb.org), through the Approved Continuing Education (ACE) program.

The National Kidney Foundation Council of Nephrology Social Workers maintains responsibility for the program. Social workers participating in this course will receive 1.5 continuing education clock hours.

Licensed social workers should contact their individual jurisdiction to review current continuing education requirements for licensure renewal.

### **Certified Case Manager**

This program has been pre-approved by the Commission for Case Manager Certification to provide continuing education credit to Certified Case Managers (CCMs).

## METHOD OF PARTICIPATION

This program is available as a webcast at [www.kidney.org/CME](http://www.kidney.org/CME). Learners will view a webcast of slides and accompanying audio. To successfully earn credit, participants must complete the activity online, including post-test and evaluation. The estimated time for completion is 1.5 hours. To receive *AMA PRA Category 1 Credit™*, participants must receive a minimum score of 70% on the post-test.

## DECLARATION OF DISCLOSURE

It is the policy of the National Kidney Foundation (NKF) to ensure balance, independence, objectivity, and scientific rigor in all CME/CE activities. Any individual who has control over CME/CE content is required to disclose to learners prior to the activity any relevant financial relationship(s) they may have with commercial interests supporting this activity or whose products or devices are discussed in this activity. If, on the basis of information disclosed, a perceived conflict exists, resolution will be achieved based on NKF's Disclosure and Conflict of Interest Policy.

## UNLABELED/ INVESTIGATIONAL USE

During their presentations, faculty may discuss an unlabeled use or an investigational use not approved for a commercial product. Each faculty member is required to disclose this information to the audience when referring to an unlabeled or investigational use.

## DISCLAIMER

The faculty, National Kidney Foundation, and Genzyme do not recommend the use of any pharmaceutical, diagnostic test, or device outside of the labeled indications as approved by the FDA. Please refer to the official prescribing information for each product for approved indications, contraindications, and warnings.

## REGISTRATION

View this free CME/CE activity at the National Kidney Foundation website, [www.kidney.org/CME](http://www.kidney.org/CME). For more information, please call NKF at 800.622.9010, or visit our website at [www.kidney.org](http://www.kidney.org).