

Target Audience

- Physicians (nephrologists, rheumatologists, primary care physicians, geriatricians, family physicians)
- Physician assistants
- Nurse practitioners
- Nurses
- Dietitians
- Pharmacists
- Case managers

Overview

The purpose of this program is to help participants: 1. Be better able to consider all available serum uric acid lowering therapies; 2. Make optimal clinical decisions based on the needs and comorbidities of their patients; 3. Individualize therapy for their patients with gout, hyperuricemia, and kidney disease; 4. Provide the necessary patient teaching so that patients are more able to adhere to serum urate lowering strategies.

Learning Objectives

Upon completion of this educational activity, you will be able to:

- Identify causes and risk factors for hyperuricemia and gout in patients with chronic kidney disease (CKD) in order to prevent the development or progression of associated complications
- Evaluate appropriate laboratory measures and diagnostic tests for the presence of hyperuricemia and gout to make optimal clinical decisions
- Integrate evidence-based interventions for lowering serum uric acid levels in the care of your patients with gout and CKD to reduce risk of adverse long-term outcomes

Topics

- Introduction
- Presentations
 - Epidemiology and pathophysiology of gout
 - Hyperuricemia, gout, and the kidneys
 - Association with comorbidities
 - Evaluation and diagnosis of gout

- Goals of therapy: a focus on urate lowering therapeutic options for hyperuricemia and gout
- Flare prophylaxis as an adjunctive therapy
- Patient adherence issues

Faculty

Robert Wortmann, MD, FACP, MACR

Professor of Medicine
Dartmouth Hitchcock Medical Center
Lebanon, NH

William Finn, MD

Professor of Medicine
University of North Carolina
Chapel Hill, NC

Olga Hilas, PharmD, MPH, BCPS, CGP

Associate Clinical Professor
St. John's University
Queens, NY

Accreditation

Physician

The National Kidney Foundation is accredited by the Accreditation Council for Continuing Medical Education to provide continuing medical education for physicians.

The National Kidney Foundation designates this enduring material for a maximum of 1.0 *AMA PRA Category 1 Credit*[™]. Physicians should claim only the credit commensurate with the extent of their participation in the activity.

This Enduring Material activity, Gout, Hyperuricemia, and Chronic Kidney Disease: Optimizing Patient Management, has been reviewed and is acceptable for up to 1 Prescribed credit(s) by the American Academy of Family Physicians. AAFP certification begins January 16, 2012. Term of approval is for two years from this date with the option of yearly renewal. Physicians should claim only the credit commensurate with the extent of their participation in the activity

Physician Assistant

AAPA accepts certificates of participation for educational activities certified for Category I credit from AOACCME, Prescribed credit from AAFP, and *AMA PRA Category 1 Credit(s)*[™] from organizations accredited by ACCME or a recognized state medical society. Physician assistants may receive a maximum of 1.0 hour of Category I credit for completing this program.

Nurse Practitioner

This program is approved for 1.0 contact hour of continuing education (which includes 0.25 hour of pharmacology) by the American Academy of Nurse. Program ID 1111379.

This program was planned in accordance with AANP CE Standards and Policies and AANP Commercial Support Standards.

Nurse

The National Kidney Foundation is an approved provider of continuing nursing education by the New York State Nurses Association, an accredited approver by the American Nurses Credentialing Center's Commission on Accreditation.

It has been assigned Provider code 7QPLGU-PRV-09.

1.0 contact hour will be awarded.

Dietitian



The National Kidney Foundation is a Continuing Professional Education (CPE) Accredited Provider with the Commission on Dietetic Registration (CDR). Registered Dietitians (RDs) and Dietetic Technicians, Registered (DTRs) will receive 1.0 continuing professional education unit (CPEU) for completion of this program/material.

Pharmacist



The University of Illinois at Chicago College of Pharmacy is accredited by the Accreditation Council for Pharmacy Education (ACPE) as a provider of pharmacy continuing education.

Completion of the entire knowledge-based activity, post-test questions, and evaluation are prerequisites for receiving a statement of continuing pharmacy education credit for 1.0 contact hour (0.1 CEU). You will receive your statement of credit immediately upon successful completion of the CPE activity. This activity has been assigned ACPE Universal Activity Number 0016-999-11-161-H01-P.

Certified Case Manager

This program has been pre-approved by the Commission for Case Manager Certification to provide continuing education credit to Certified Case Managers (CCMs).

Method of Participation

This CME/CE activity is available as a dynamic web-based, computer-guided experience that allows learners to assess the needs of two virtual patients similar to challenging patients whom they see in practice. A complete picture of

each "virtual patient" will be unveiled as the clinician reads the patient record, asks questions, and elicits findings from laboratory data and physical exams. Once the learners feel confident about the information, they will be able to develop a clinical action plan that addresses individual virtual patient needs, including those for collaborative inter-professional care. Upon submission of the clinical action plan, learners will be able to compare their clinical action plans against an evidence-based "best practice" plan outlined in advance by clinical experts.

To receive a certificate of completion, participants will be required to complete, at a minimum, one virtual patient experience, including a post-test and program evaluation. The estimated time for completion is 1.0 hour. To receive AMA PRA Category 1 Credits[™], participants must receive a minimum score of 70% on the post test.

Declaration of Disclosure

It is the policy of the National Kidney Foundation (NKF) to ensure balance, independence, objectivity, and scientific rigor in all CME/CE activities. Any individual who has control over CME content is required to disclose to learners prior to the activity any relevant financial relationship(s) they may have with commercial interests supporting this activity or whose products or devices are discussed in this activity.

If, on the basis of information disclosed, a perceived conflict exists, resolution will be achieved based on NKF's Disclosure and Conflict of Interest Policy.

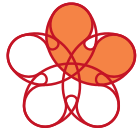
Unlabeled/Investigational Use

During their presentations, faculty may discuss an unlabeled use or an investigational use not approved for a commercial product. Each faculty member is required to disclose this information to the audience when referring to an unlabeled or investigational use.

Disclaimer

Information contained in this National Kidney Foundation (NKF) educational resource is based upon current data available at the time of publication. Information is intended to help clinicians become aware of new scientific findings and developments. This NKF educational resource is not intended to set out a preferred standard of care and should not be construed as one. Neither should the information be interpreted as prescribing an exclusive course of management.

Variations in practice will inevitably and appropriately occur when clinicians take into account the needs of individual patients, available resources, and limitations unique to an institution or type of practice. Every healthcare professional making use of information in this NKF educational resource is responsible for interpreting the data as it pertains to clinical decision making in each individual patient.



**National Kidney
Foundation®**

30 East 33rd Street
New York, NY 10016
www.kidney.org

Nonprofit
US Postage Paid
National
Kidney
Foundation

**New FREE Interactive Case-based
CME/CE Learning Activity**

**Gout, Hyperuricemia, and Chronic
Kidney Disease: Optimizing Patient
Management**

© 2012 National Kidney Foundation, Inc. All rights reserved. 02-10-4413_1BB

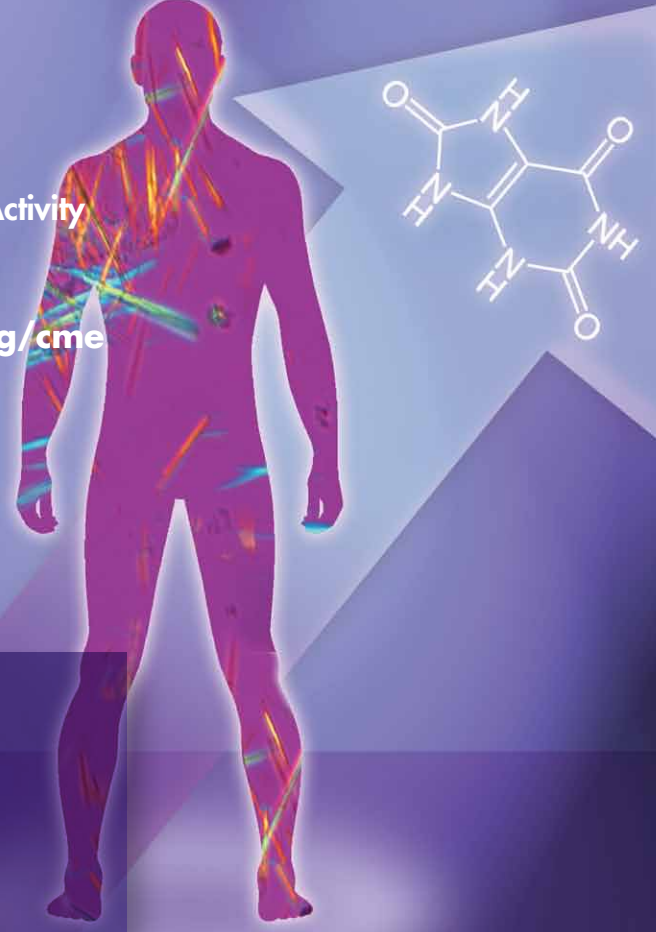
Gout, Hyperuricemia, and Chronic Kidney Disease: Optimizing Patient Management

A **Free** Webcast
CME/CE Learning Activity

Register at
www.kidney.org/cme

Release Date:
January 16, 2012

Expiration Date:
January 16, 2014



Accredited by



**National Kidney
Foundation®**

Supported by an educational grant from

